

HOLDEN SUBSTATION TRANSMISSION LINE PROJECT

Appalachian Power representatives plan upgrades to the transmission system in Mingo and Logan counties. The Holden Substation Transmission Line Project involves building a new substation, building about 3.5 miles of new 138-kilovolt (kV) electric transmission line, retiring about 2 miles of 138-kV transmission line and retiring a substation. Construction begins late 2023 and concludes by early 2025.

WHAT

The project involves:

- Constructing the new Holden Substation
- Building about 3.5 miles of 138-kV transmission line in new right-of-way*
- Retiring about 2 miles of 138-kV transmission line
- Retiring the Pine Creek Substation

*Project right-of-way representatives plan to work with affected landowners to discuss and review the route.

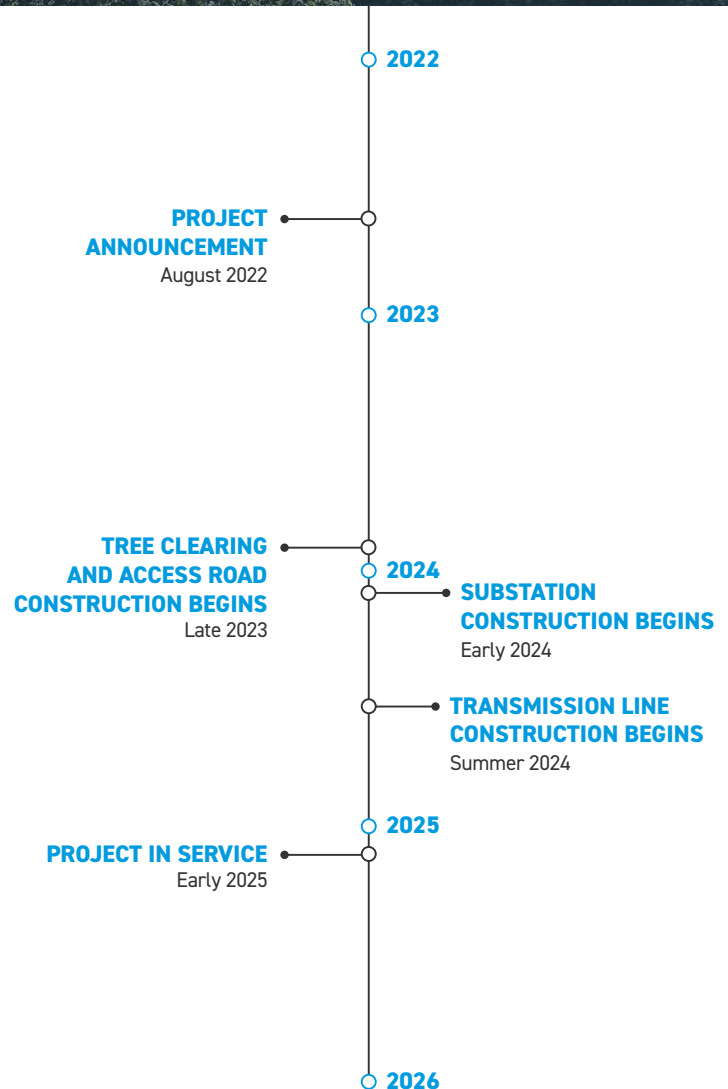
WHY

The project provides a new power source to the area and supports economic development for the Buck Harless Industrial Park.

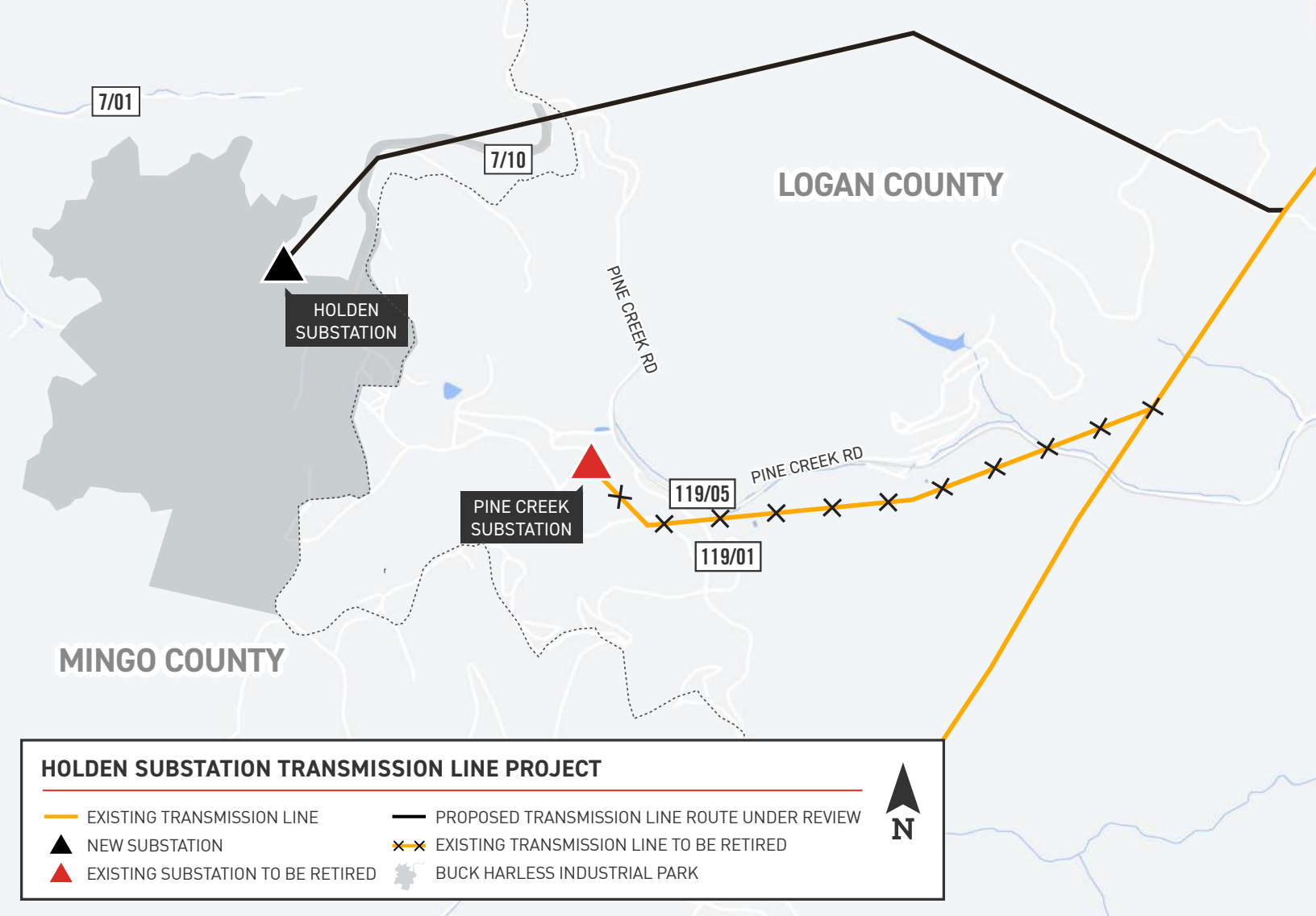
These electrical improvements support economic development needs in West Virginia to provide power to business-ready sites.

WHERE

The proposed Holden Substation is located in the Buck Harless Industrial Park in Mingo County. The transmission line connects the substation to an existing transmission line in Logan County.

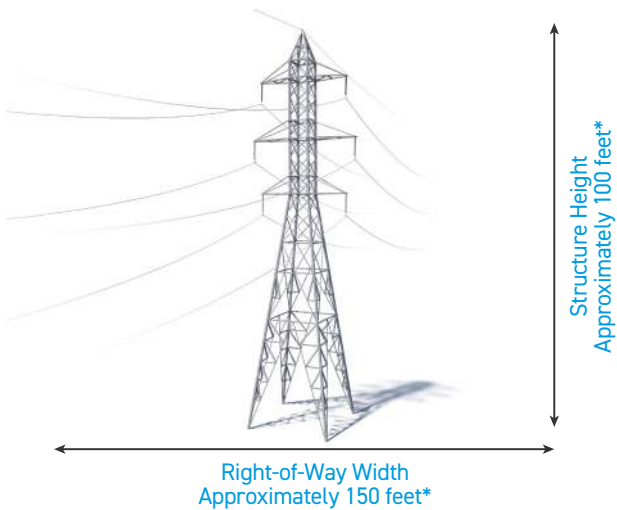


Timeline subject to change.



TYPICAL STRUCTURE

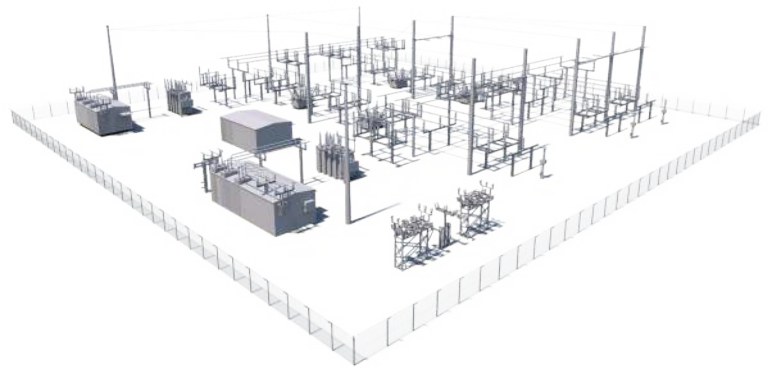
Crews plan to build the power line using primarily lattice towers.



*Exact structure, height, and right-of-way requirements may vary.

TYPICAL SUBSTATION

Substations serve as electrical intersections converting the power to voltage levels for use in homes, businesses and industrial facilities.



*Substation shown is a general depiction of the proposed facilities for the project. It does not represent final design.

WE VALUE YOUR INPUT. PLEASE SEND COMMENTS AND QUESTIONS TO:
 NICOLE HODGES · PROJECT OUTREACH SPECIALIST
 APCO_OUTREACH@AEP.COM · 833-313-3743
 APPALACHIANPOWER.COM/HOLDEN

