

KINCAID AREA TRANSMISSION LINE PROJECT



Appalachian Power representatives plan to upgrade the electric transmission grid in Fayette County. The Kincaid Area Transmission Line Project involves building approximately 15 miles of 69-kilovolt (kV) transmission line, rebuilding approximately 2 miles of 69-kV transmission line, building two new substations and upgrading several substations in Fayette County. Construction begins in late 2023 and concludes by spring 2026.



WHAT

The project involves:

- Building approximately 15 miles of 69-kV transmission line
- Rebuilding approximately 2 miles of 69-kV transmission line
- Building two new substations
- Upgrading several substations in the area

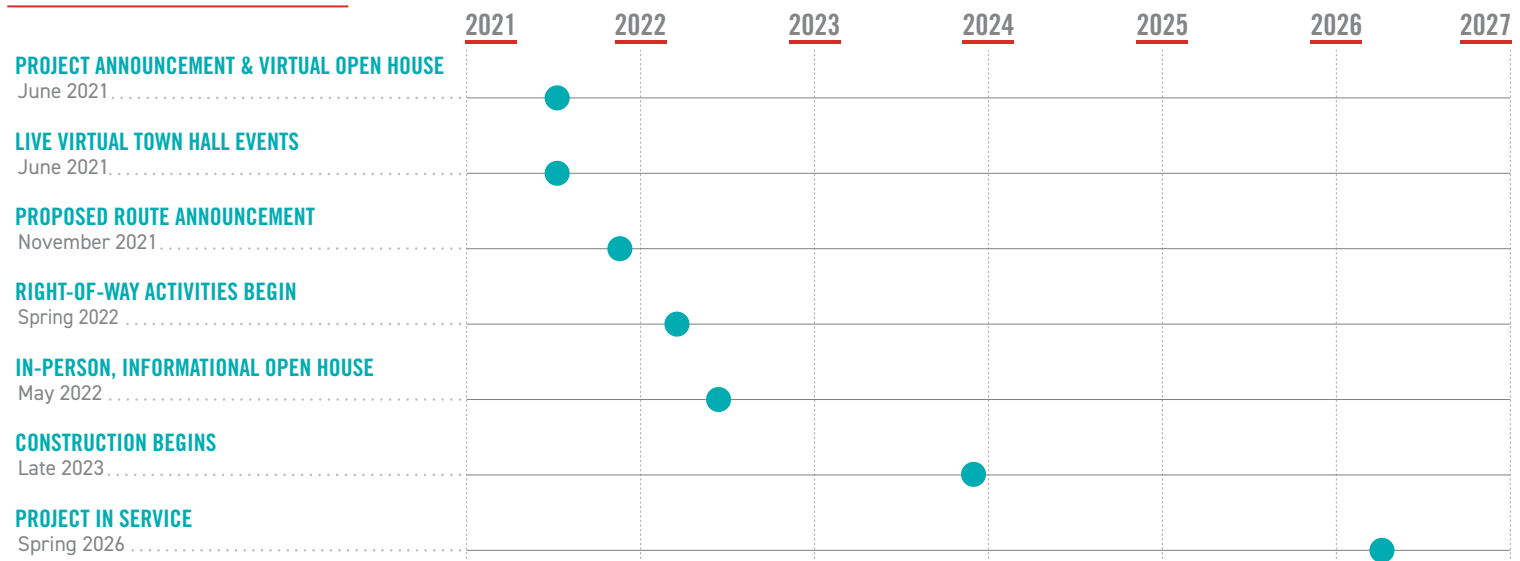
WHY

This project allows crews to retire approximately 10 miles of transmission line that includes deteriorating wooden poles and steel towers originally installed in 1913. The existing line has experienced multiple power outages in recent years. The proposed upgrades help to reduce these types of outages and strengthen the local electric system, providing increased electric reliability for area customers.

WHERE

The project begins at an existing substation located off Kingston Road in Kincaid. The upgrades travel east and connect to a new substation to be located off Maple Road in Fayetteville. The route continues northeast toward an existing substation located near US-19 in Fayetteville.

PROJECT SCHEDULE

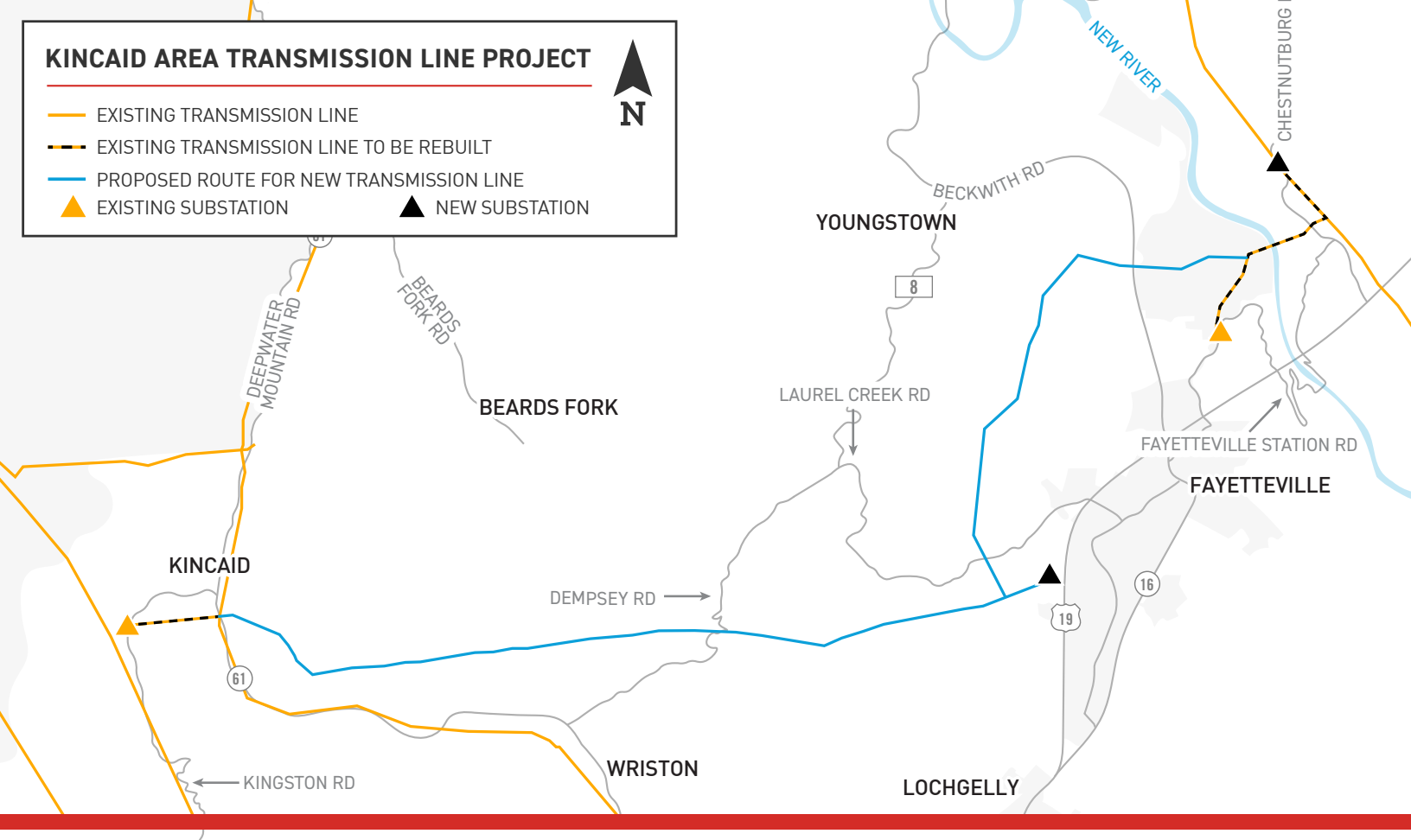


*Timeline subject to change.

KINCAID AREA TRANSMISSION LINE PROJECT



- EXISTING TRANSMISSION LINE
- EXISTING TRANSMISSION LINE TO BE REBUILT
- PROPOSED ROUTE FOR NEW TRANSMISSION LINE
- ▲ EXISTING SUBSTATION
- ▲ NEW SUBSTATION

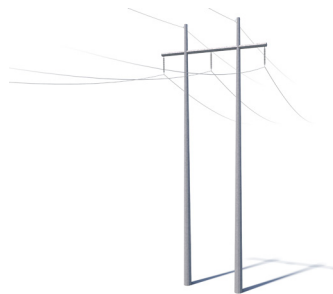


TYPICAL STRUCTURES

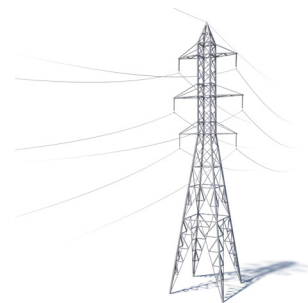
Crews plan to build the transmission line using a combination of structures such as steel H-frame poles, lattice towers, single-pole structures and three-pole structures.

Structure Height: **Approximately 85-110 feet***
 Right-of-Way Width: **Approximately 100 feet***

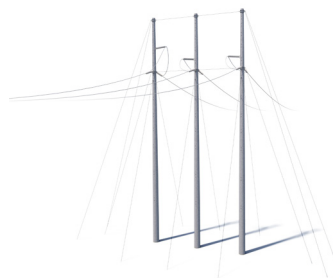
At Appalachian Power, we are committed to meeting the energy needs of customers while protecting the environment and natural beauty of the region.



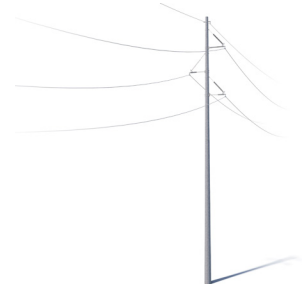
H-FRAME



LATTICE TOWER



THREE-POLE STRUCTURE



SINGLE-POLE STRUCTURE

*Exact structure, height and right-of-way requirements may vary

APPALACHIAN POWER VALUES YOUR INPUT ABOUT THIS PROJECT. PLEASE SEND COMMENTS AND QUESTIONS TO:

NICOLE HODGES

Project Outreach Specialist
 833-313-3743
 Apco_Outreach@aep.com
AppalachianPower.com/Kincaid

