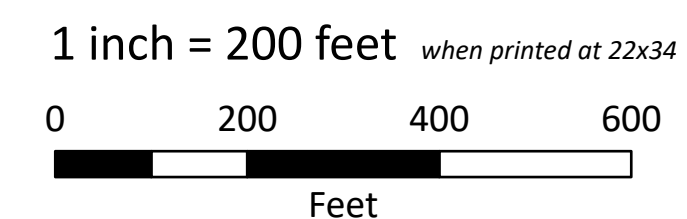




- ▲ Existing Non-APCO Substation
- ✱ Gas Well
- Railroad
- Stream (NHD)
- Existing Transmission Line to be Rebuilt
- Existing Transmission Line to be Retired
- Existing Transmission Line
- Populated Place
- Waterbody (NHD)
- Map Tile
- Parcel Boundary

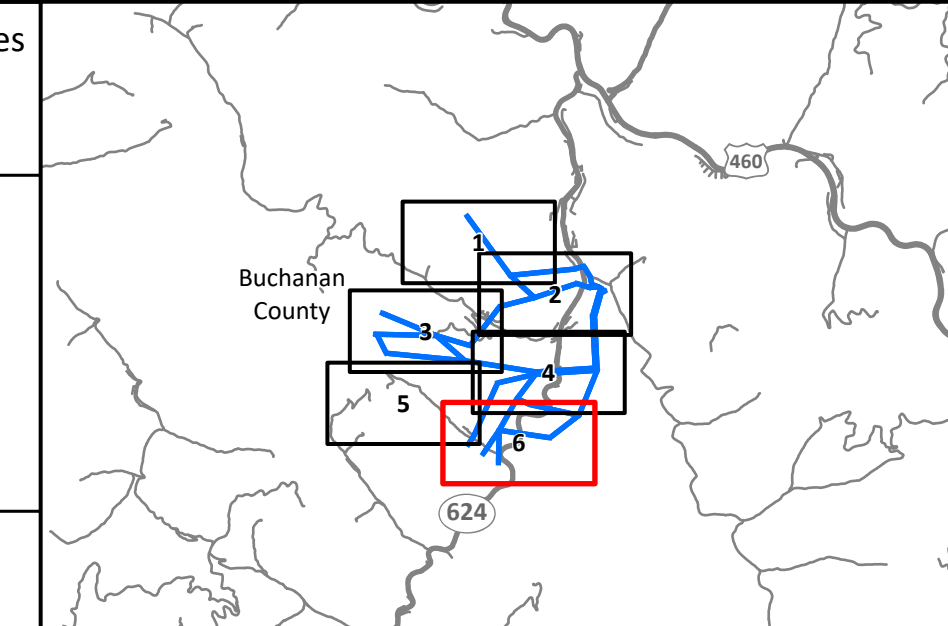


Only one route will be chosen and built. Shown segments/routes could change based on landowner input, engineering, ground surveys and studies.



Imagery Source: VGIN Aerial Imagery

May 5th, 2023



## Aerial Map 6 of 6

**Mount Heron - Coal Creek  
Transmission Line Rebuild Project**