

LEVISA SUBSTATION PROJECT

Appalachian Power representatives plan power grid improvements in Buchanan County, Virginia. Construction begins in early 2025 and concludes in late 2025.

WHAT

The project involves:

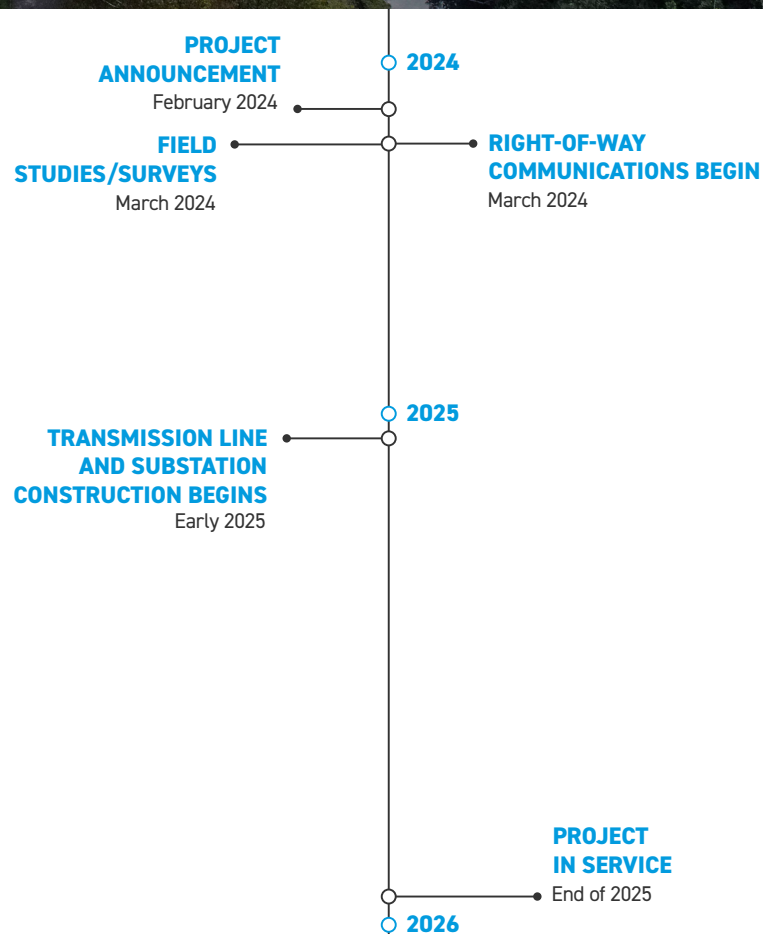
- Building the Levisa Substation.
- Building approximately 2 miles of 69-kilovolt transmission line to connect the new substation to the local power grid.
- Retiring equipment at the Dismal River Substation. Some equipment will remain in operation and on site.

WHY

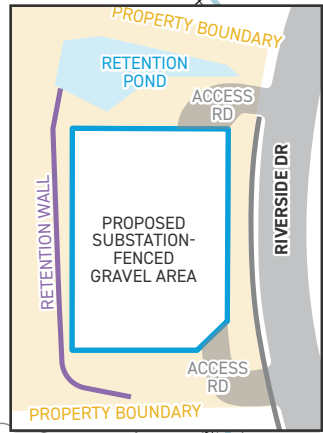
The Dismal River Substation is located in an area that is prone to flooding. In 2022, the substation experienced flooding which caused area power outages and impacted its ability to continue serving the area's electrical load. The area is currently served by a temporary substation. Building the new Levisa Substation outside of the flood plain reduces the risk of outages that could affect the area's electric reliability. Plans for the new substation include installing equipment with increased electrical capacity able to serve the growing community's power demand. The new 2-mile power line will connect the new substation to an existing transmission line, connecting it to the existing power grid.

WHERE

Crews plan to build the Levisa Substation on the former American Legion Post 164 property located off Riverside Drive. The transmission line route location is currently under evaluation and is expected to be located across industrial and commercial properties just west of Vansant.



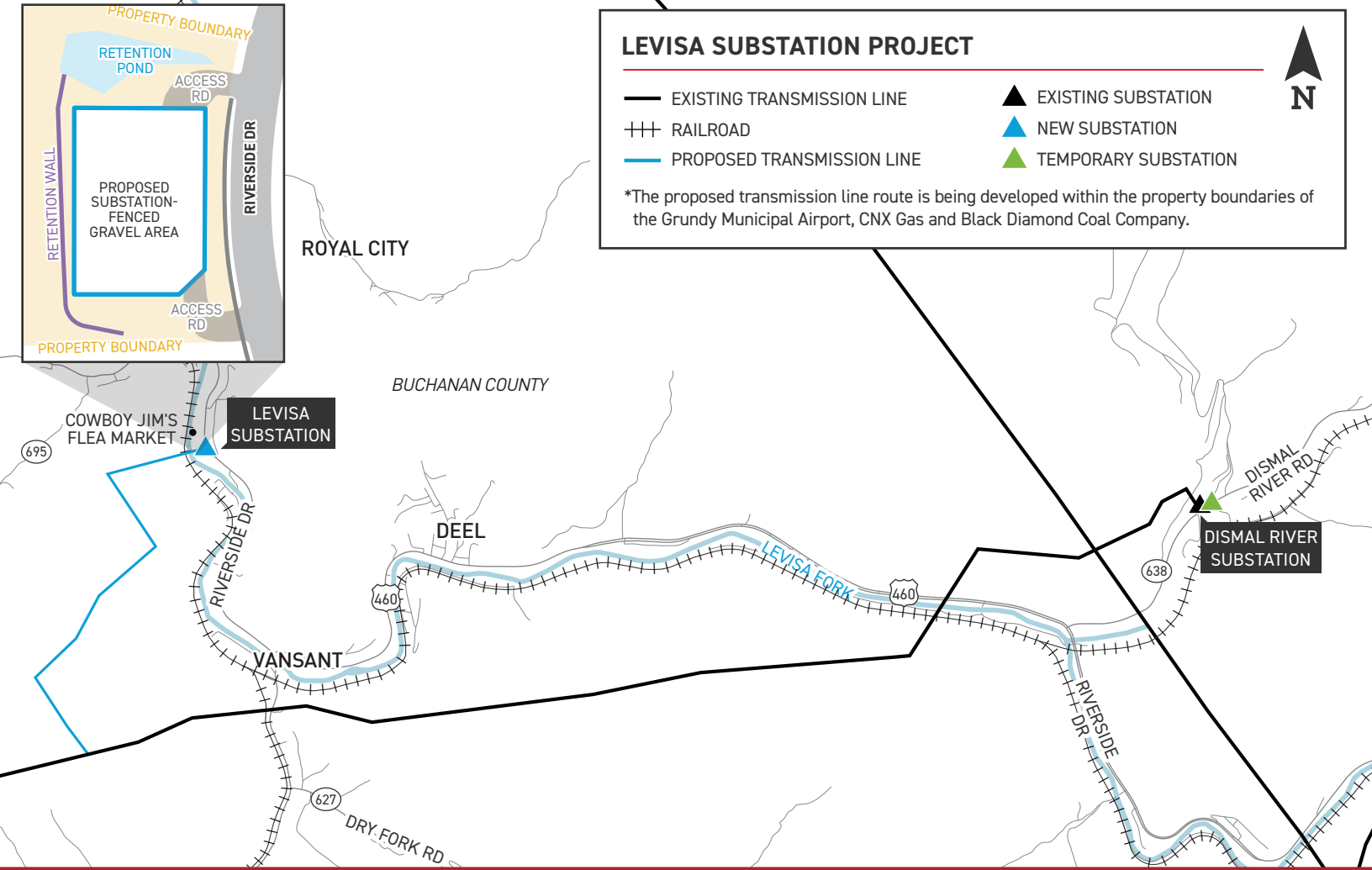
Timeline subject to change.



LEVISA SUBSTATION PROJECT

- EXISTING TRANSMISSION LINE
- +++ RAILROAD
- PROPOSED TRANSMISSION LINE
- ▲ EXISTING SUBSTATION
- ▲ NEW SUBSTATION
- ▲ TEMPORARY SUBSTATION

*The proposed transmission line route is being developed within the property boundaries of the Grundy Municipal Airport, CNX Gas and Black Diamond Coal Company.



TYPICAL SUBSTATION

Substations serve as electrical intersections converting the power to voltage levels for use in homes, businesses and industrial facilities. The proposed Levisa Substation plans include a fenced gravel area containing electrical equipment and measuring about 220x155 feet.

Proposed Levisa Substation location.



Substation shown is a general depiction of the proposed facilities for the project. It does not represent a final design.



WE VALUE YOUR INPUT. PLEASE SEND COMMENTS AND QUESTIONS TO:
 AMANDA S. DEHAVEN · PROJECT OUTREACH SPECIALIST
 APCO_OUTREACH@AEP.COM · 833-313-3743
 APPALACHIANPOWER.COM/LEVISA

