

Mason Phillips - Mason Phillips Tap Transmission Line Rebuild Project

AEP Texas representatives are planning power grid upgrades to improve electric reliability for customers in Mason County. The Mason Phillips Tap to Mason Phillips Transmission Line Rebuild Project involves rebuilding approximately 14 miles of 69-kilovolt (kV) transmission line and upgrading it to a higher voltage to strengthen the local transmission system in the area.

What

The project involves rebuilding and upgrading approximately 14 miles of 69-kV transmission line to 138-kV capacity between the Mason Substation and the Mason Phillips Tap Substation.

AEP Texas officials plan to apply for a Certificate of Convenience and Necessity (CCN) with the Public Utility Commission of Texas (PUCT) following a review of public input on the route link development and additional route analysis. Project representatives expect to file a CCN application by Fall 2026. The final line route will be determined by the PUCT.

Why

The transmission line was constructed in the 1960s and is past its planned service life.

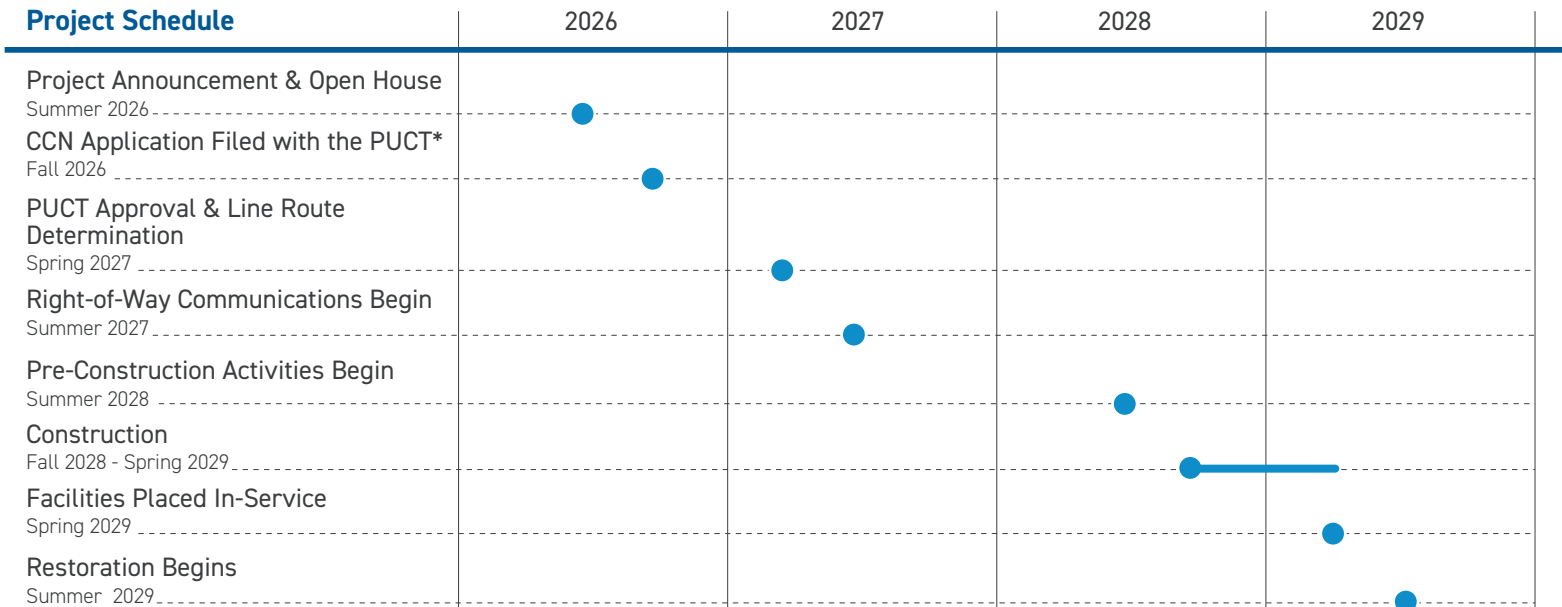
The project:

- Replaces aging wooden poles with modern steel poles to meet current engineering, safety and operational standards.
- Decreases the likelihood and duration of wide, community-sustained outages.

Where

The line stretches approximately 14 miles between AEP Texas' Mason Substation in south Mason to the Mason Phillips Substation, located about 3 miles north of Gillespie County.

Project Schedule



*PUCT: Public Utility Commission of Texas**Timeline subject to change.

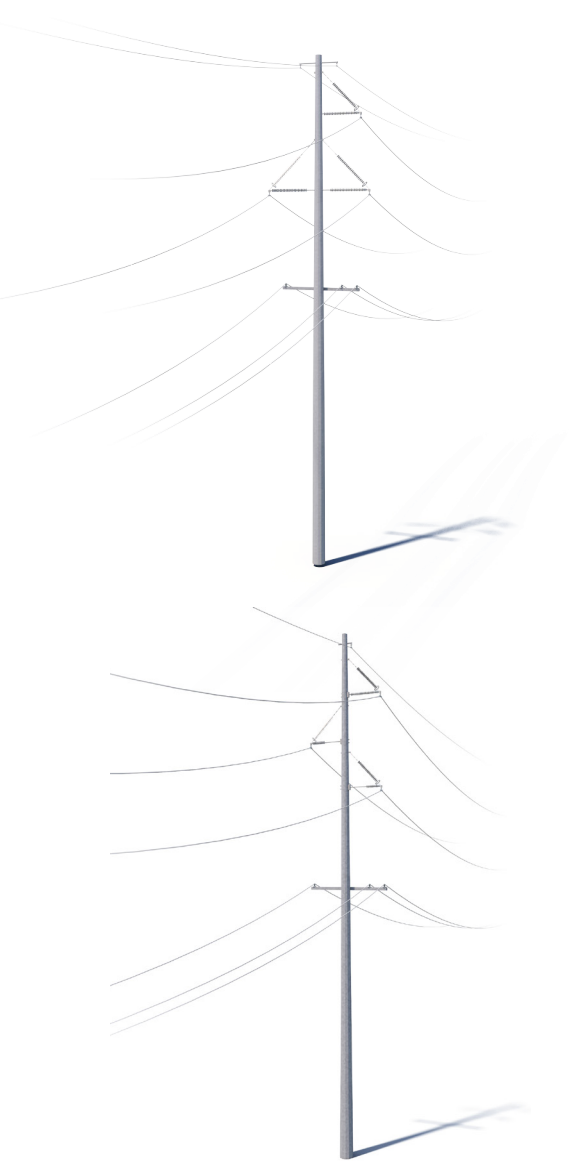
Typical Structures

AEP Texas crews plan to install single steel pole structures.

Typical Structure Height:
Approximately 110-120 feet*




Typical Distance Between Structures:
Approximately 500-600 feet*

Typical Right-of-Way Width:
Approximately 100 feet*

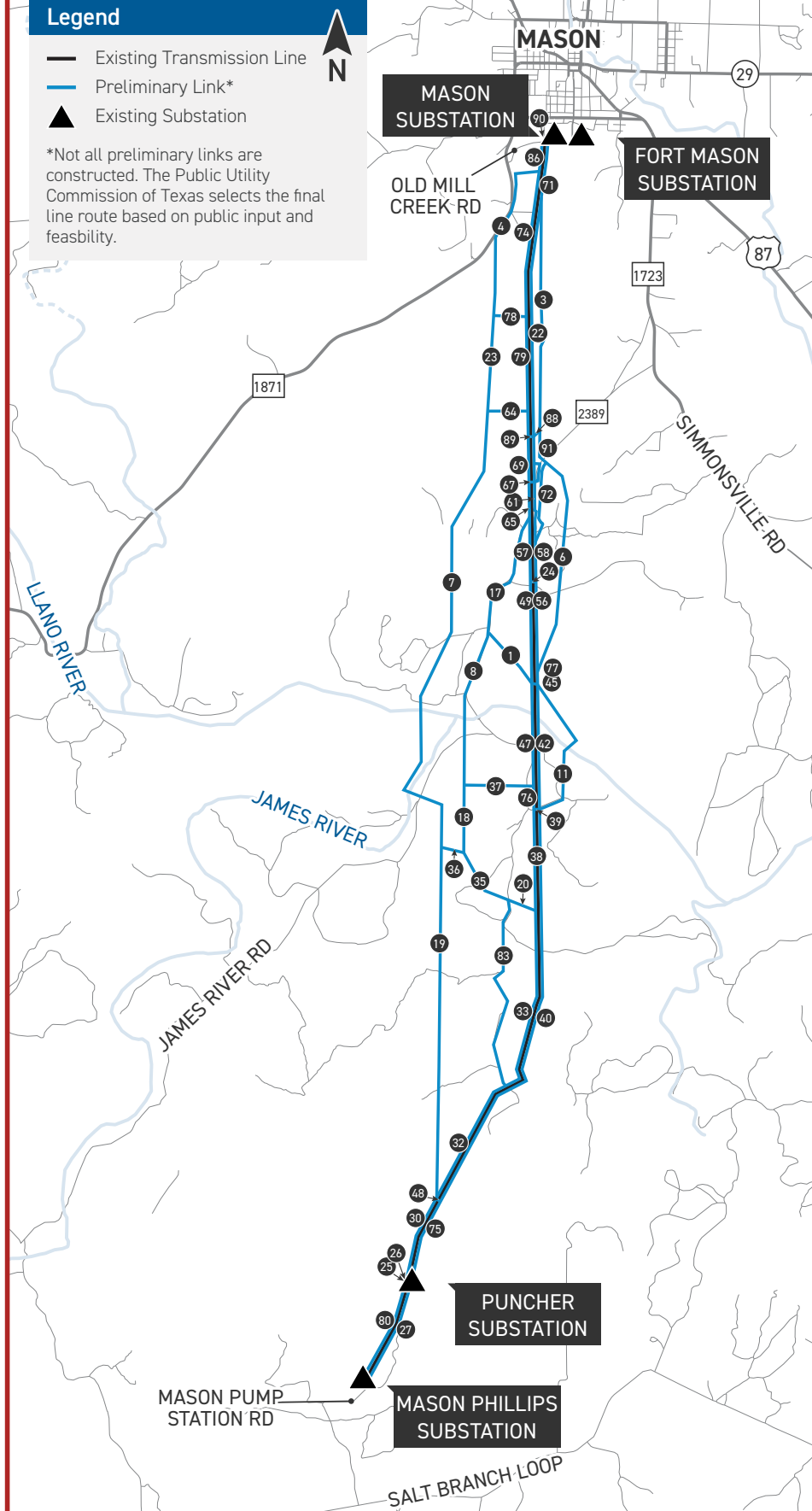


**Exact structure, height, and right-of-way requirements may vary.*

Legend

-  Existing Transmission Line
-  Preliminary Link*
-  Existing Substation

*Not all preliminary links are constructed. The Public Utility Commission of Texas selects the final line route based on public input and feasibility.



We value your input. Please send comments and questions to:

AEP Texas Project Team
AEPTexasOutreach@aep.com • 346-643-0280

[AEPTexas.com/MasonPhillips](https://www.aep.com/MasonPhillips)