

# La Palma - Stewart Road Transmission Improvements Project

AEP Texas representatives plan to upgrade the local electric transmission system in Hidalgo and Cameron counties. The La Palma – Stewart Road Transmission Improvements project involves upgrading approximately 41 miles of 69-kilovolt (kV) electric transmission line to 138-kV to enhance electric reliability.

## What

The project involves:

- Rebuilding and upgrading about 23 miles of 69-kV transmission line to 138-kV capacity between the existing Stewart Road Substation and the new Rio Rico Substation.
- Rebuilding and upgrading about 18 miles of 69-kV transmission line to 138-kV capacity between the new Rio Rico Substation and the existing La Palma Substation.
- Building the new Rangerville and Rio Rico Substations.
- Upgrading equipment at Progreso, La Palma and Stewart Road Substations to meet current AEP engineering and operational standards.

AEP Texas officials plan to apply for a Certificate of Convenience and Necessity (CCN) application with the Public Utility Commission of Texas (PUCT) following a review of public input on the route link development and additional route analysis. Project representatives expect to file a CCN application by Fall 2026. The final line route will be determined by the PUCT.

## Why

The project:

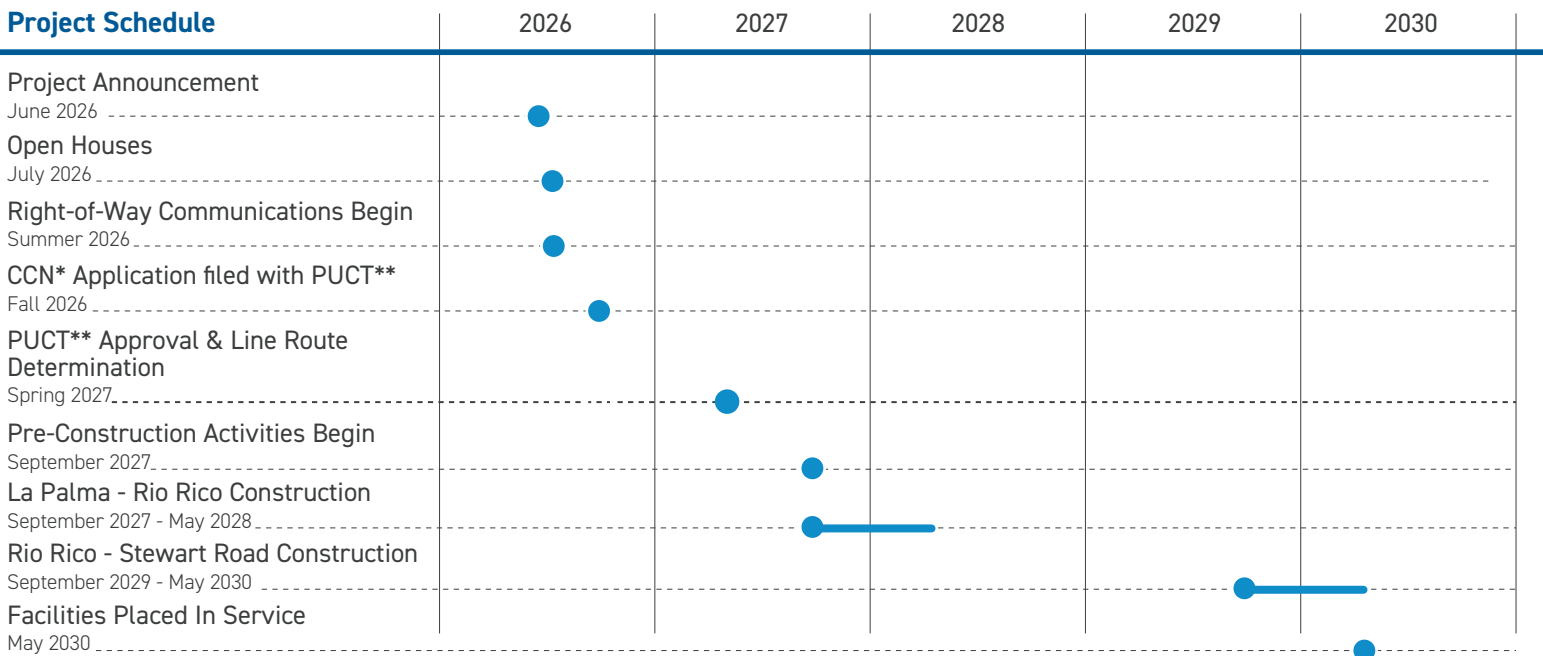
- Replaces aging wooden poles with modern steel poles and updates aging equipment at substations.
- Reduces the likelihood of larger, community-sustained power outages.
- Provides additional electric capacity to support and meet the economic growth and development in the Rio Grande Valley.

## Where

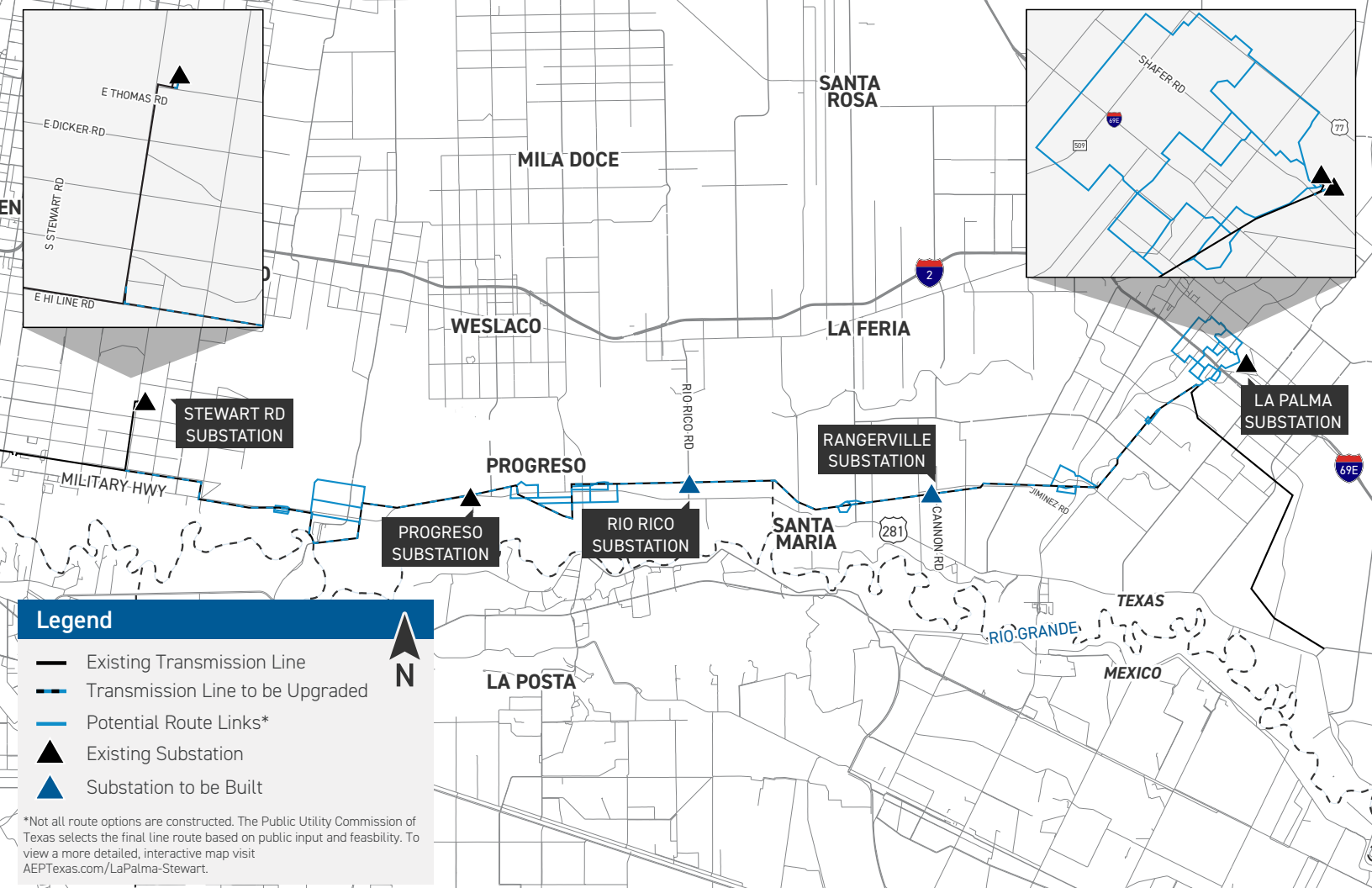
The project area includes:

- The cities of San Juan, South Alamo, Donna and Progreso Lakes in Hidalgo County.
- The cities of La Feria, Santa Maria and San Benito in Cameron County.
- The community of Rangerville in Cameron County.

## Project Schedule



\*Certificate of Convenience and Necessity \*\*PUCT: Public Utility Commission of Texas Timeline subject to change.



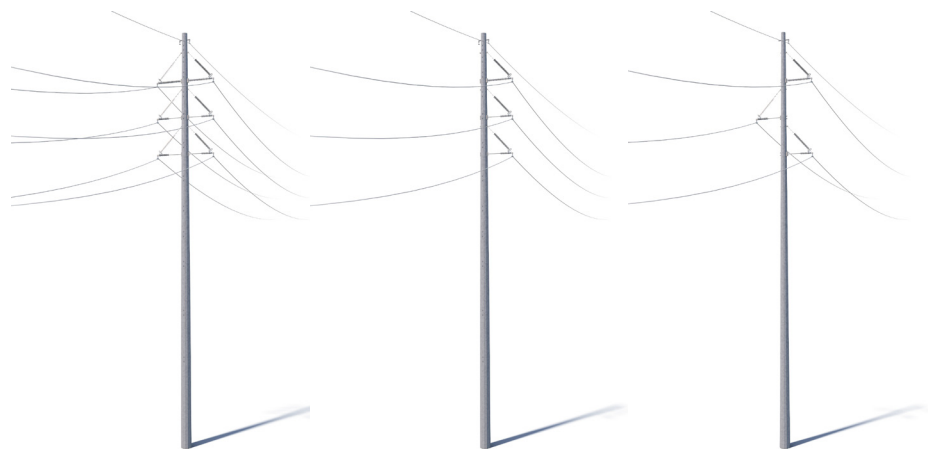
## Typical Structures

AEP Texas crews plan to install single steel pole structures.

Typical Structure Height:  
Approximately 85-100 feet\*

Typical Distance Between Structures:  
Approximately 400-600 feet\*

Typical Right-of-Way Width:  
Approximately 80-100 feet\*



\*Exact structure, height, and right-of-way requirements may vary.



**We value your input. Please send comments and questions to:**

Project Outreach Team  
[AEPTexasOutreach@aep.com](mailto:AEPTexasOutreach@aep.com) • 346-643-0280

[AEPTexas.com/LaPalma-Stewart](http://AEPTexas.com/LaPalma-Stewart)

06/08/2026