

Nagel Substation

Expansion Project



AEP Appalachian Transmission Co., an affiliate of Kingsport Power, plans to increase electric reliability to customers and reduce congestion on the overall transmission system in parts of Tennessee and Virginia by making significant upgrades to the Nagel Substation.

The Nagel Substation Expansion project includes upgrading and modernizing the equipment in the substation and adding additional infrastructure to support a lower voltage. The work at the substation will reduce the need for ongoing maintenance and provide a more efficient and robust power system.

Construction is expected to start fall 2017 and be complete by the end of 2019. Estimated budget for the project is \$105 million.



The Nagel Substation Expansion project includes adding modern technology in the substation to increase electric reliability to customers. Work will also include adding additional infrastructure to support a lower voltage and reduce equipment maintenance.

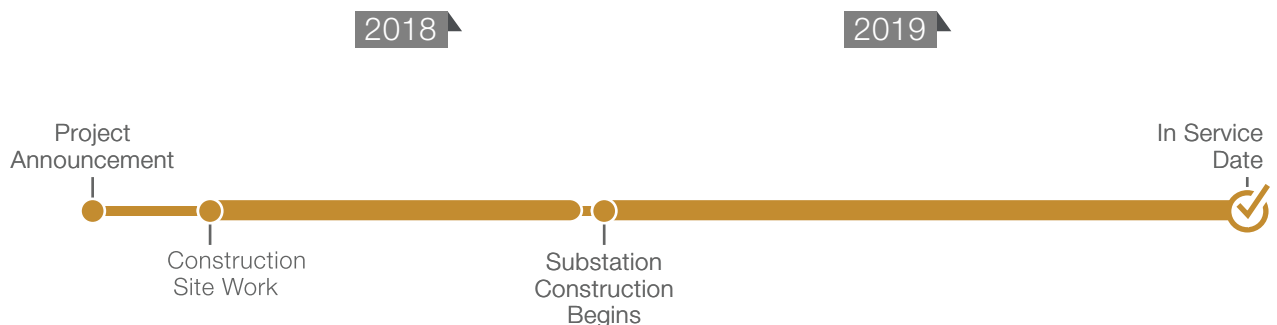


The existing Nagel Substation requires routine maintenance checks to ensure equipment is working at maximum efficiency. Replacing the existing equipment with modern technology reduces the need for maintenance by allowing the company to remotely monitor issues to help increase overall system performance and reduce congestion on the transmission system.



The Nagel Substation is located on Stanley Valley Road in Church Hill, Tennessee, adjacent to the Tennessee – Virginia border. All substation work will take place on property owned by the company. The upgrades will increase reliability to customers in Kingsport, Tennessee, Gate City, Virginia, and as far east as Bristol, Virginia.

Project Schedule



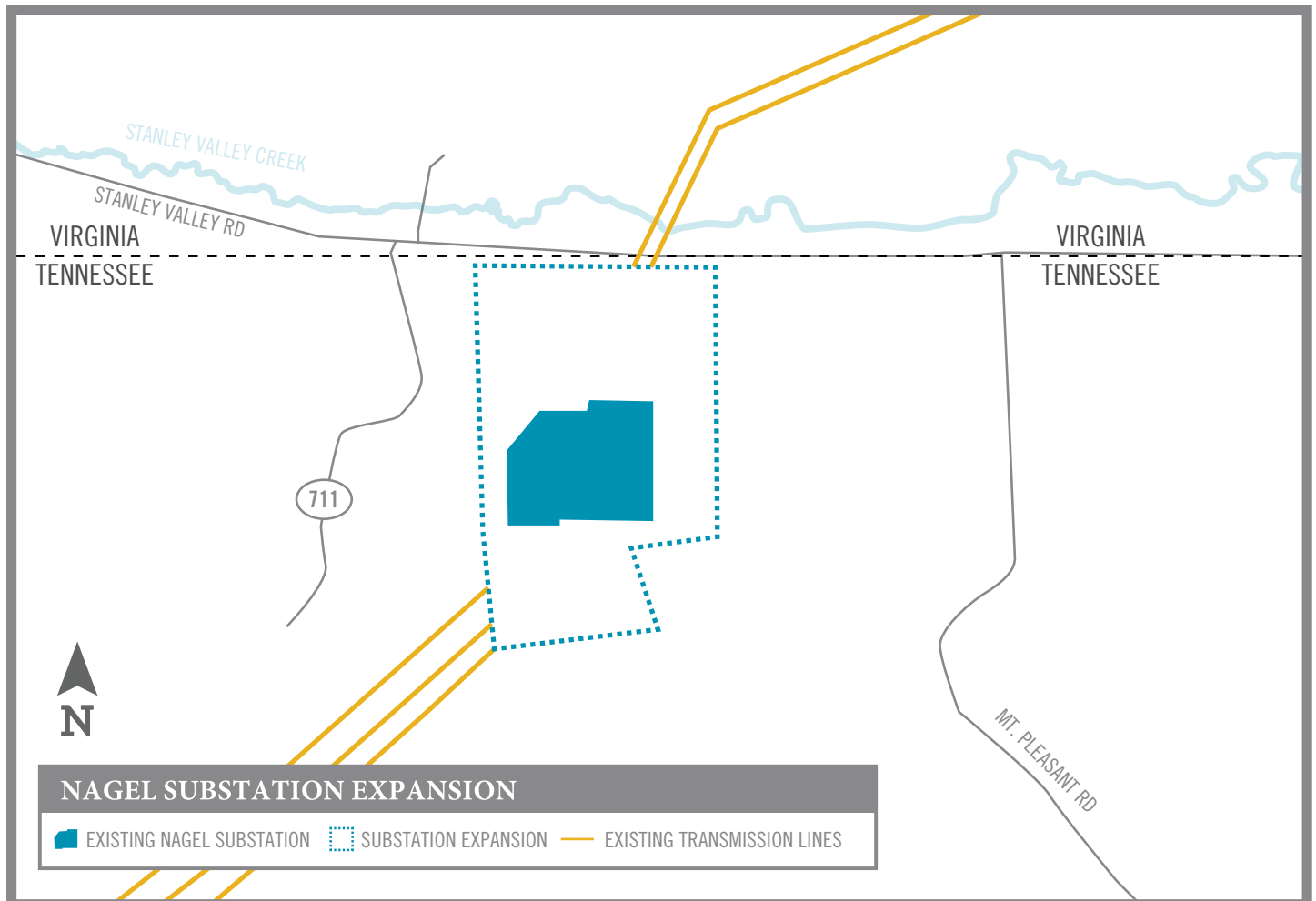
* Timeline is subject to change. Please visit project website for updated schedule.

Substations

Substations serve as electrical intersections converting the power to lower voltages so it can be distributed onto distribution lines that deliver electricity to where we live and work. Substations step down the voltage to levels for use in homes, businesses and industrial facilities.

Appalachian Power is committed to carefully balancing the energy needs of homes and businesses while protecting the environment and natural beauty of the region.

* Substation shown is a general depiction of the proposed substation that will be built for this project. It does not represent final design.



Appalachian Power welcomes your feedback regarding this project. Please send comments and questions to:

Contact:

CORTNEY MUSTARD

Project Outreach Specialist

833-313-3743

camustard@aep.com

If you have questions or need more information visit the project website at www.AppalachianPower.com/Nagel

