

CLINTON-FOSS TAP

TRANSMISSION LINE REBUILD PROJECT

**PUBLIC SERVICE
COMPANY OF
OKLAHOMA**

An **AEP** Company
BOUNDLESS ENERGY™

Public Service Company of Oklahoma (PSO) representatives plan power grid upgrades to the local electric transmission system. The project involves rebuilding about 18 miles of power line in the Clinton area.



WHAT

Clinton City - Clinton Junction Transmission Line (Fall 2023 - Late 2023)

- Rebuilding about 5 miles of 69-kilovolt (kV) power line between the Clinton Junction Substation, located in Clinton just west of West Commerce Road and South 28th Street, and the Clinton City Substation, located in northeast Clinton near North 1st Street and East Orient Avenue

Foss Water Treatment Plant Transmission Line Tap (Early 2024 - Summer 2024)

- Rebuilding about 13 miles of 69-kV power line extending from the Foss Water Treatment Plant Substation to a structure in Clinton near County Road N2240 and County Road E1030

WHY

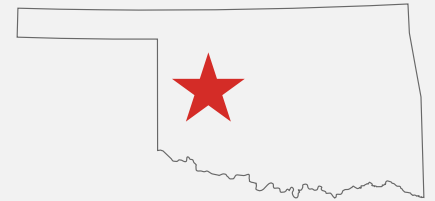
Project benefits:

- Replaces aging wooden poles from the 1960s and 1970s with steel poles to strengthen the grid against weather impacts
- Upgrades the transmission line to reduce maintenance frequency and decrease the likelihood of larger, sustained community outages

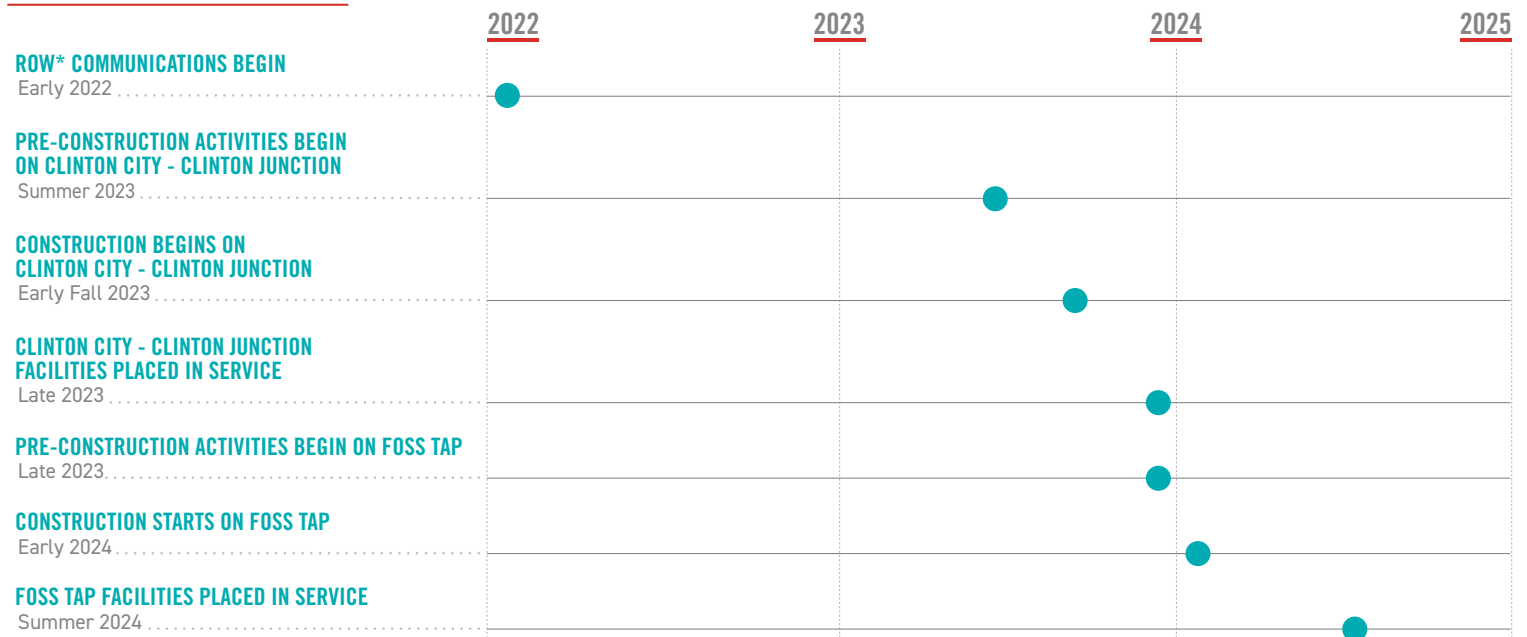
WHERE

The project area includes:

- City of Clinton
- Custer County
- Foss Reservoir area



PROJECT SCHEDULE



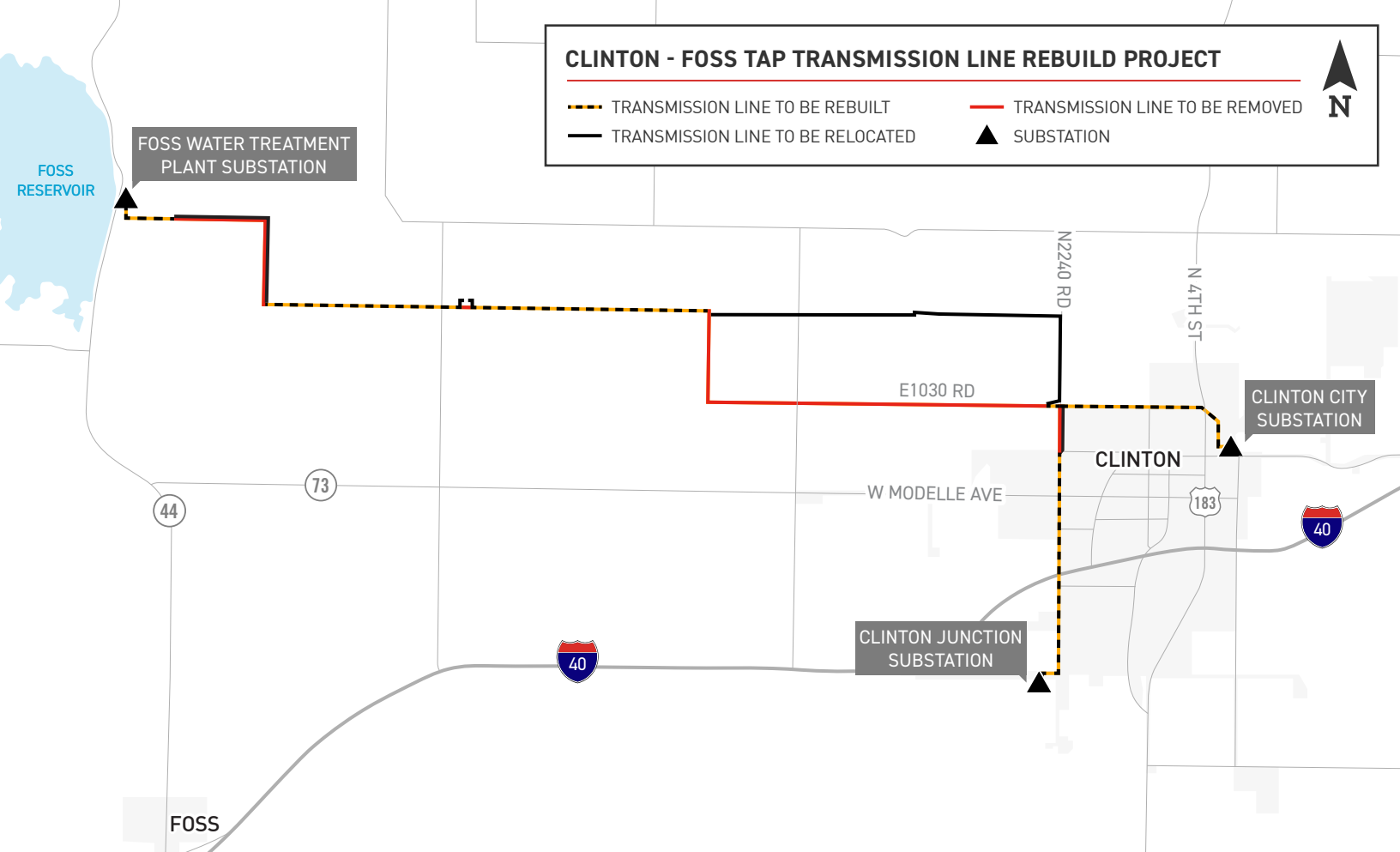
*ROW: Right-of-Way

**Timeline subject to change

CLINTON - FOSS TAP TRANSMISSION LINE REBUILD PROJECT

- TRANSMISSION LINE TO BE REBUILT
- TRANSMISSION LINE TO BE RELOCATED

- TRANSMISSION LINE TO BE REMOVED
- ▲ SUBSTATION



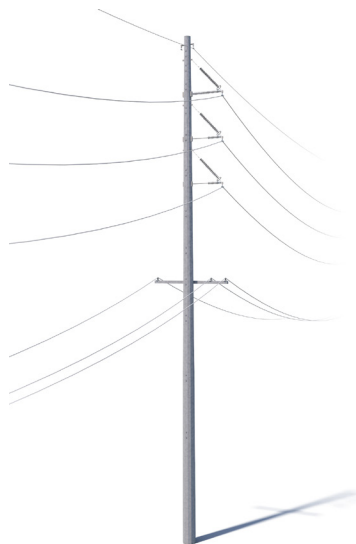
TYPICAL STRUCTURES

Typical Structure Height:

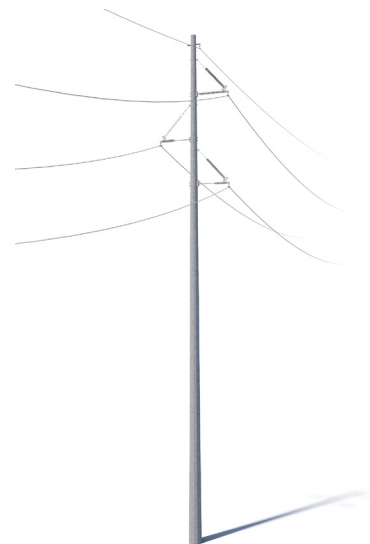
*Approximately 85 feet

Typical Distance Between Structures:

*Approximately 300 feet



Typical structure for the Clinton Junction-Clinton City Transmission Line segment



Typical structure for the Foss Water Treatment Plant Transmission Line Tap segment

*Exact structure, height and right-of-way requirements may vary

PSO VALUES YOUR INPUT ABOUT THIS PROJECT. PLEASE SEND COMMENTS AND QUESTIONS TO:

MATTHEW HAMES

Project Outreach Specialist

918-237-6736

mchames@aep.com

PSOklahoma.com/Clinton-FossTap



An AEP Company

BOUNDLESS ENERGY™