

# CLINTON-FOSS TAP TRANSMISSION LINE REBUILD PROJECT

Public Service Company of Oklahoma (PSO) representatives plan power grid upgrades to the local electric transmission system. The project involves rebuilding about 18 miles of power line in the Clinton area.

## WHAT

### Clinton City - Clinton Junction Transmission Line (Fall 2024 - Spring 2025)

- Rebuilding about 5 miles of 69-kilovolt (kV) power line between the Clinton Junction Substation, located in southwest Clinton off West Commerce Road, and the Clinton City Substation, located in northeast Clinton

### Foss Water Treatment Plant Transmission Line Tap (Summer 2024 - Fall 2024)

- Rebuilding about 13 miles of 69-kV power line extending from the Foss Water Treatment Plant Substation to a structure in Clinton off County Road E1030

## WHY

Project benefits:

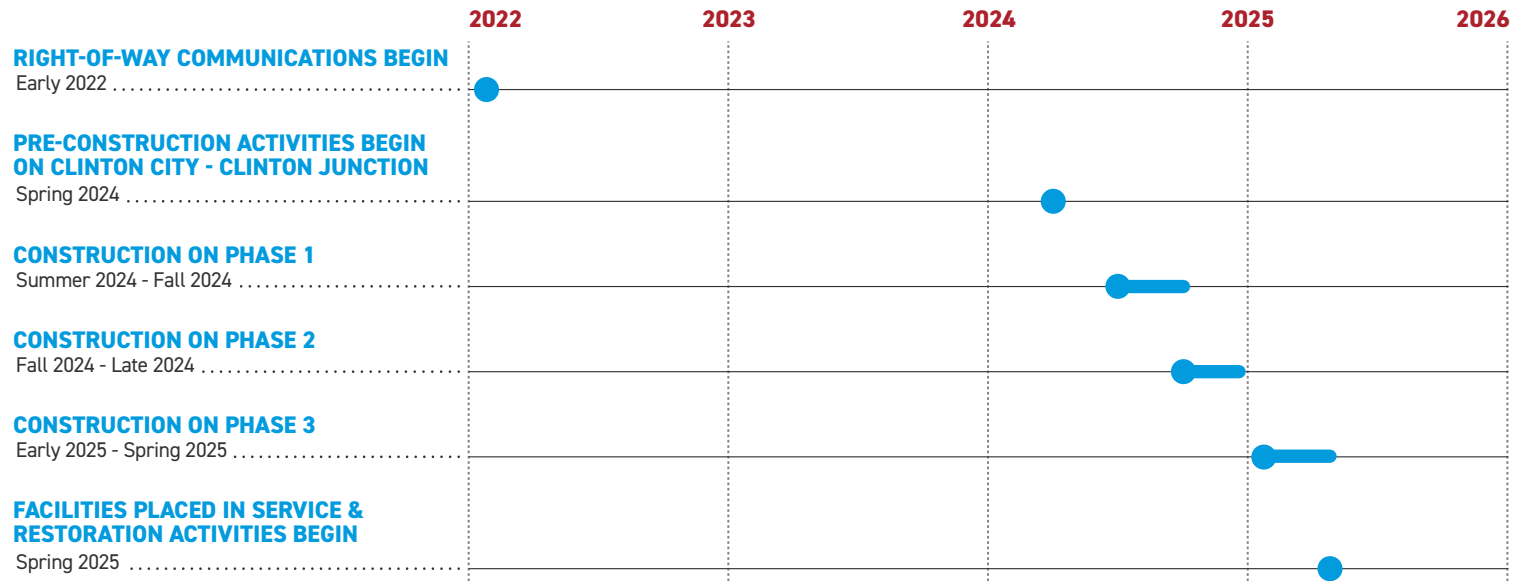
- Replaces aging wooden poles from the 1960s and 1970s with steel poles to strengthen the grid against weather impacts
- Upgrades the transmission line to reduce the need for frequent maintenance and decrease the likelihood of sustained, community-wide power outages

## WHERE

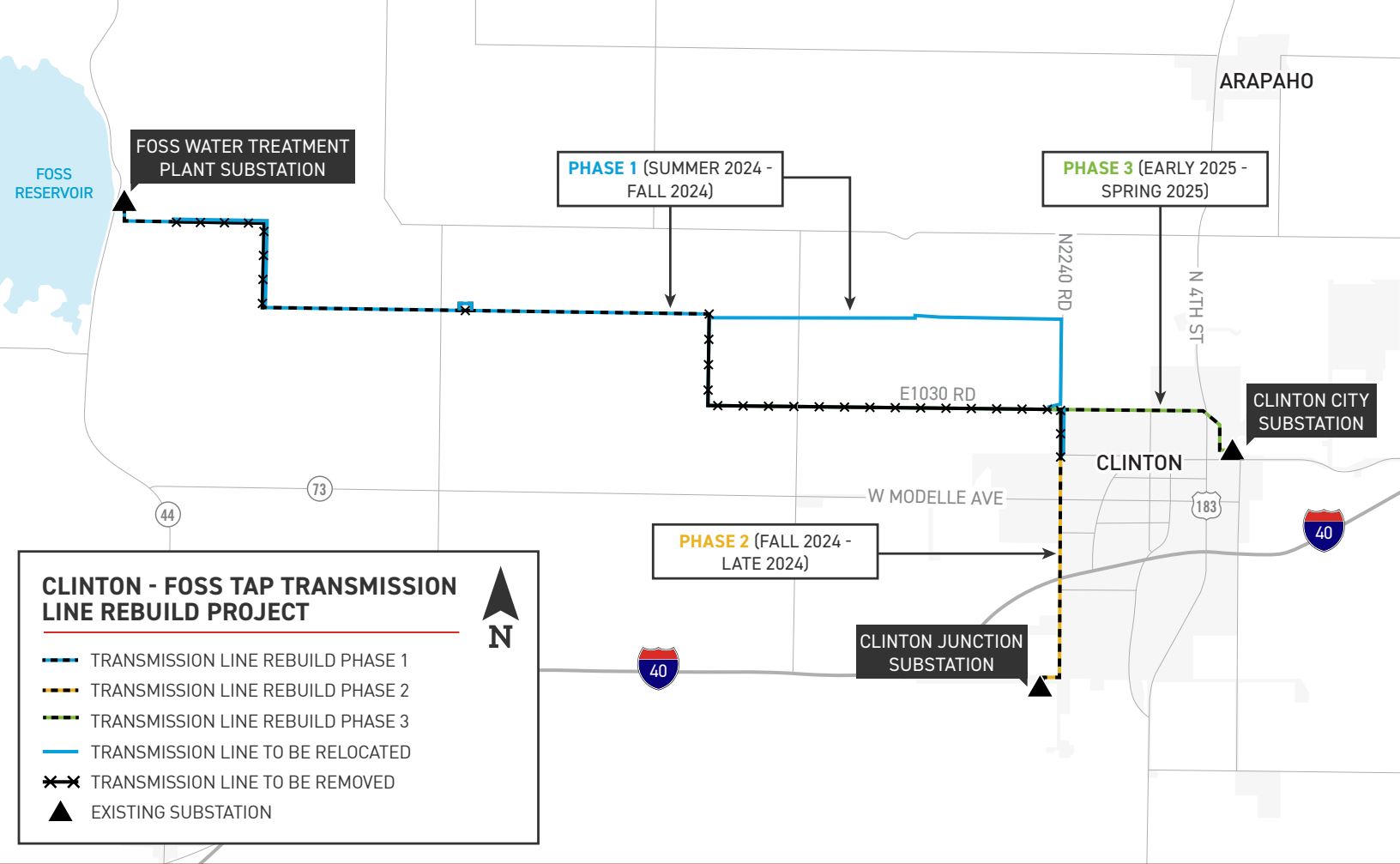
The project area includes:

- City of Clinton
- Custer County
- Foss Reservoir area

## PROJECT SCHEDULE



\*Timeline subject to change.



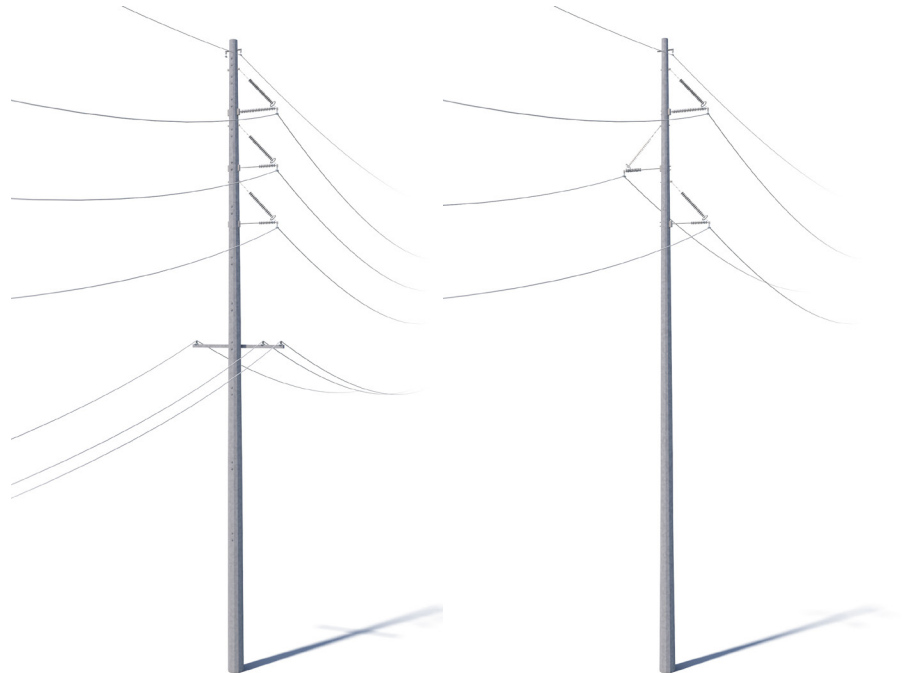
## TYPICAL STRUCTURES

Typical Structure Height:

\*Approximately 75 - 85 feet

Typical Distance Between Structures:

\*Approximately 300 - 400 feet



Typical structure for the Clinton Junction-Clinton City Transmission Line segment

Typical structure for the Foss Water Treatment Plant Transmission Line Tap segment

\*Exact structure, height, and right-of-way requirements may vary.

**WE VALUE YOUR INPUT. PLEASE SEND COMMENTS AND QUESTIONS TO:**

MATTHEW HAMES · PROJECT OUTREACH SPECIALIST

MCHAMES@AEP.COM · 918-237-6736

PSOKLAHOMA.COM/CLINTON-FOSSTAP

