

STILLWELL-JELLOWAY-LOUDONVILLE TRANSMISSION LINE PROJECT

AEP Ohio representatives plan power grid upgrades to improve electric reliability for customers in Holmes, Knox and Ashland counties. The Stillwell-Jelloway-Loudonville Transmission Line Project involves building approximately 17 miles of 69-kilovolt (kV) power line and building Ravin Substation.

WHAT

The project involves:

- Building Ravin Substation off Jelloway Road in Jefferson Township, Knox County
- Connecting Jelloway Substation off College Hill Road to a power line between Ravin Substation and Loudonville Substation
- Building about 9 miles of 69-kilovolt (kV) power line between Ravin Substation and Stillwell Substation in Holmes and Knox counties
- Building about 8 miles of 69-kV power line between Ravin and Loudonville substations in Knox and Ashland counties

WHY

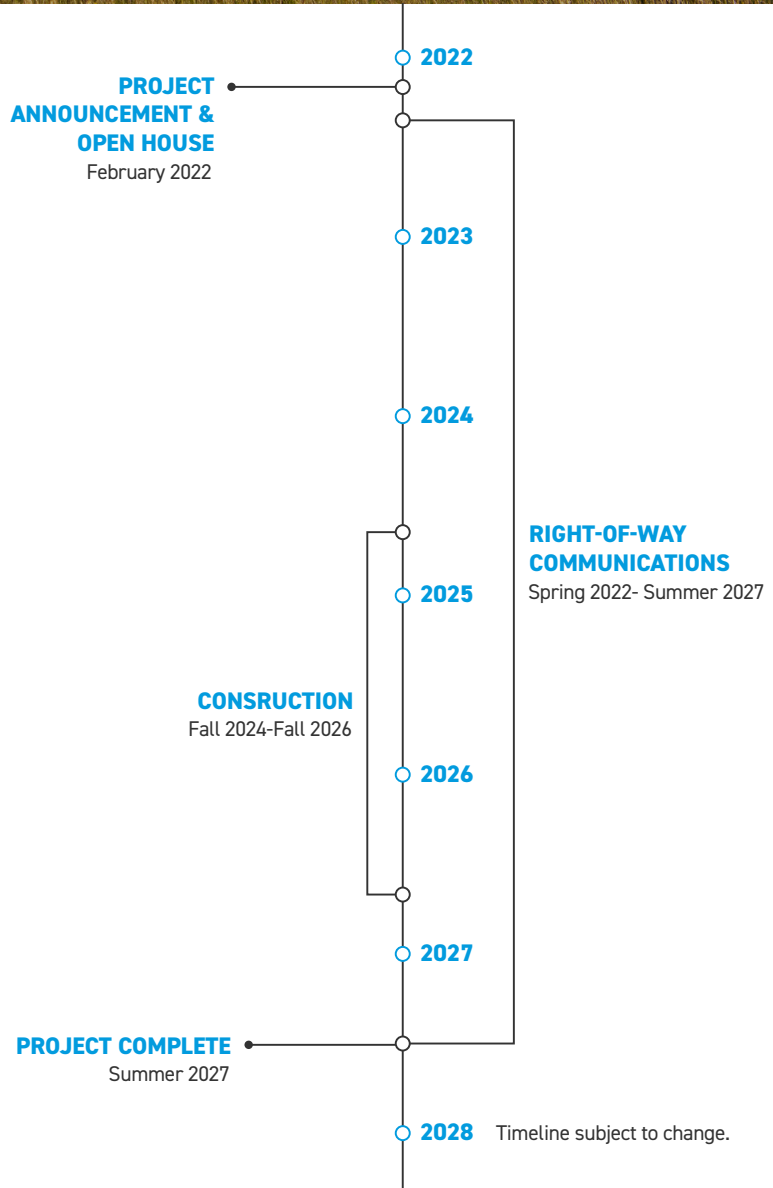
The improvements:

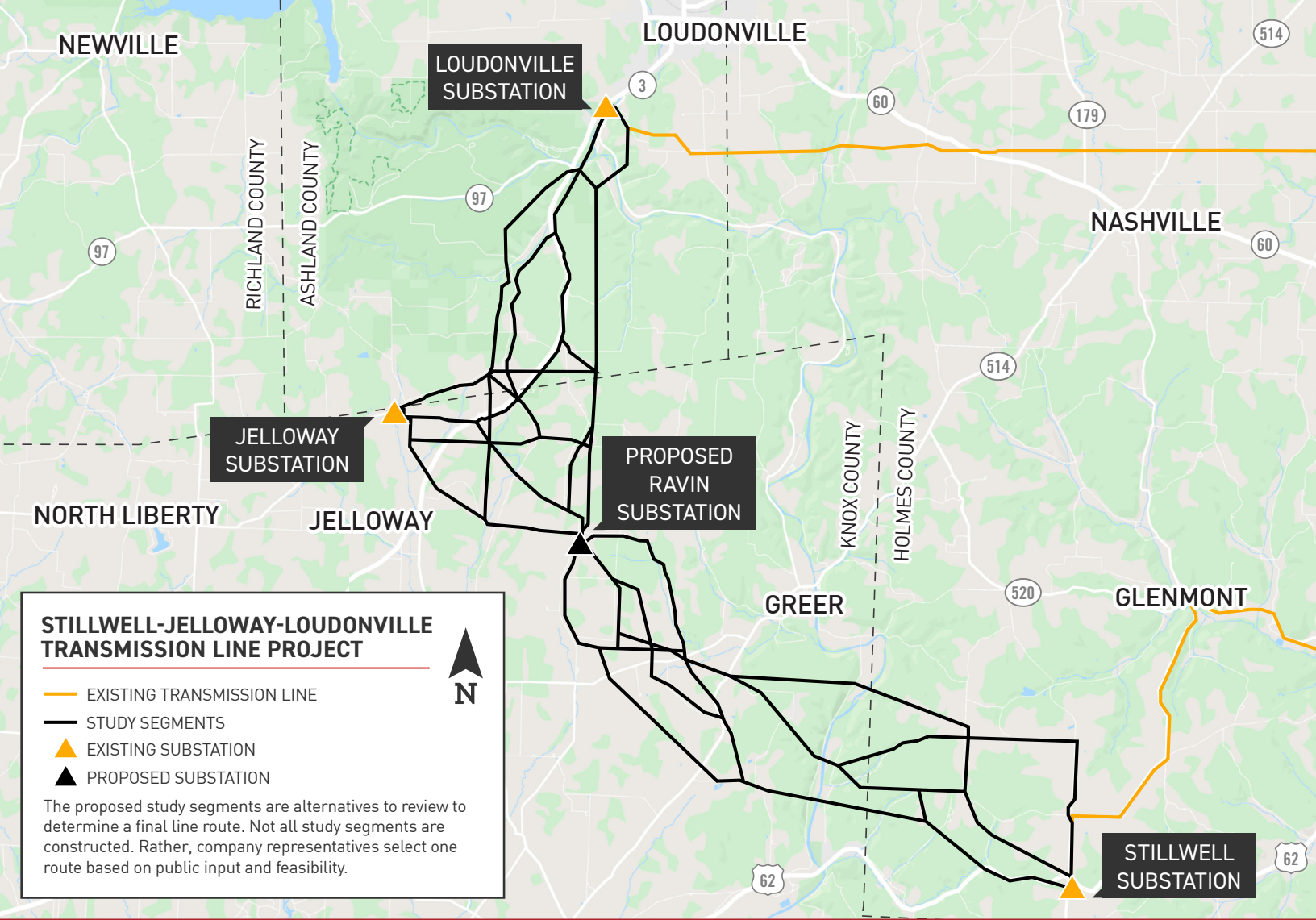
- Improve electric service reliability for Holmes-Wayne Electric Cooperative and The Energy Cooperative
- Provide additional power source to enhance area reliability and reduce extended outages
- Speed recovery of service when outages occur

WHERE

The project area includes:

- Richland Township in Holmes County
- Jefferson and Brown townships in Knox County
- Hanover Township in Ashland County





TYPICAL STRUCTURES

The project involves the use of steel H-frame and single poles.

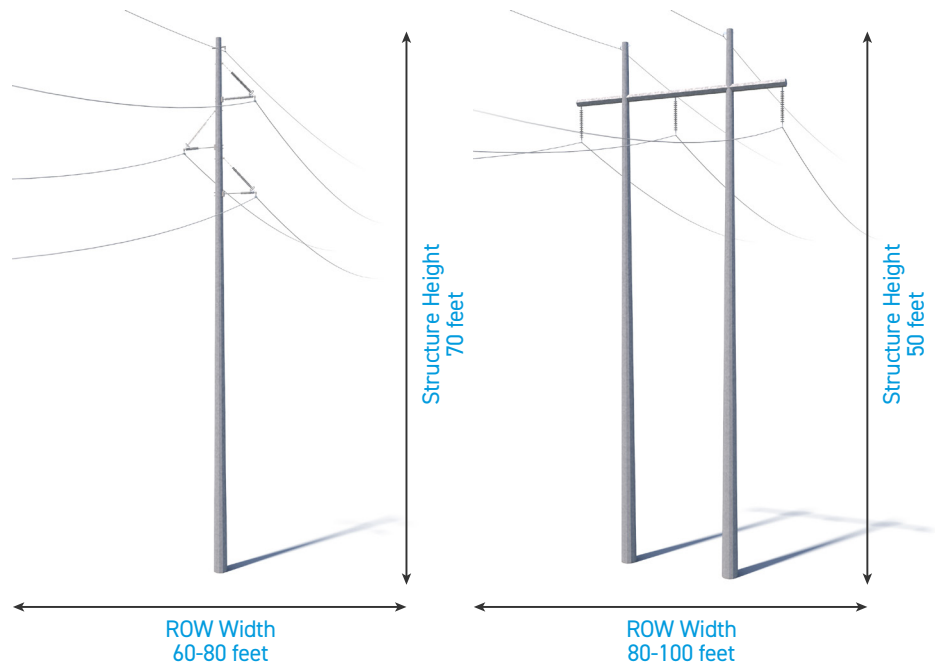
Monopole:

- Structure Height: [Approximately 70 feet*](#)
- Right-of-Way Width: [Approximately 60-80 feet*](#)

H-Frame:

- Structure Height: [Approximately 50 feet*](#)
- Right-of-Way Width: [Approximately 80-100 feet*](#)

Exact structure, height, and right-of-way requirements may vary.



WE VALUE YOUR INPUT. PLEASE SEND COMMENTS AND QUESTIONS TO:

JOE DEMAREE · PROJECT OUTREACH SPECIALIST

JKDEMAREE@AEP.COM · (380) 205-5046

AEP/OHIO.COM/STILLWELL



An AEP Company
 BOUNDLESS ENERGY