

SOUDER 138 KV EXTENSION TRANSMISSION LINE PROJECT

AEP Ohio representatives plan power grid upgrades in New Albany in Franklin County. Additions to the power grid are needed to strengthen the electric transmission system by increasing electric capacity to ensure service reliability and support local economic development.

WHAT

This project involves:

- Building Souder Substation off Souder Road in New Albany.
- Building just over 1 mile of 138-kilovolt (kV) transmission line*

*Requires Ohio Power Siting Board (OPSB) approval.

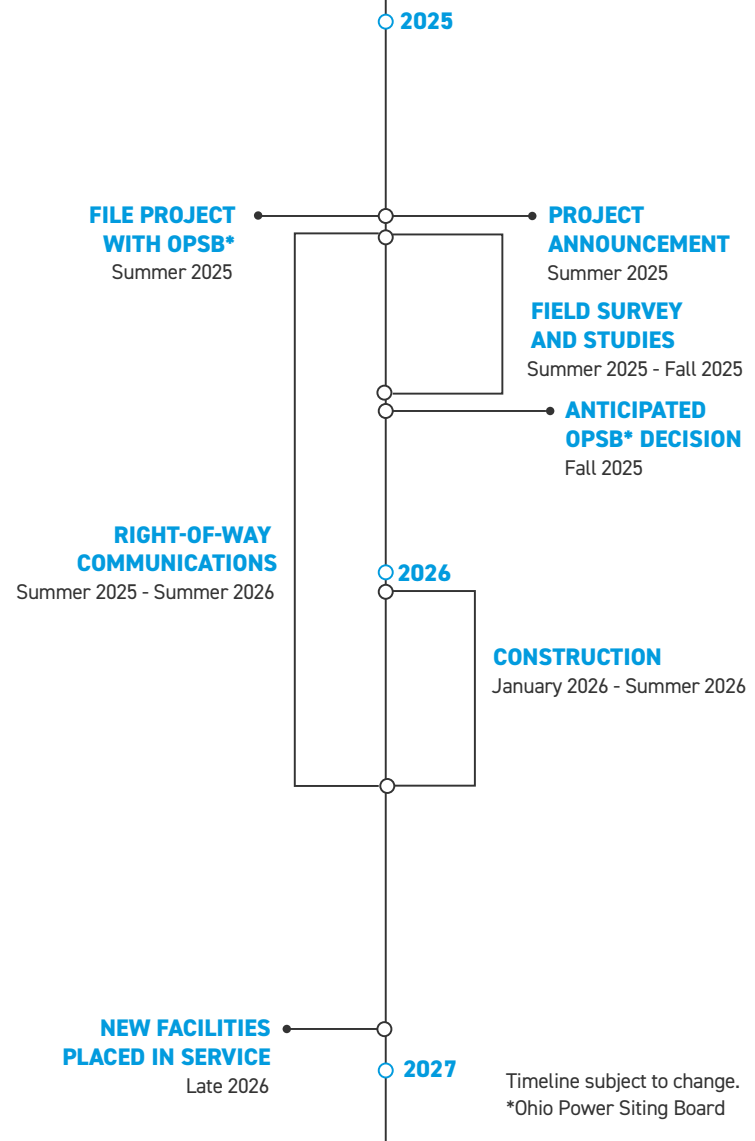
WHY

The project strengthens the electric transmission system by providing an additional power source to the area. The current substations in and around New Albany cannot adequately handle the requested and predicted electrical load growth. Constructing the new Souder Substation, and connecting it to AEP's existing transmission lines, alleviates the overload concerns on the surrounding substations.

WHERE

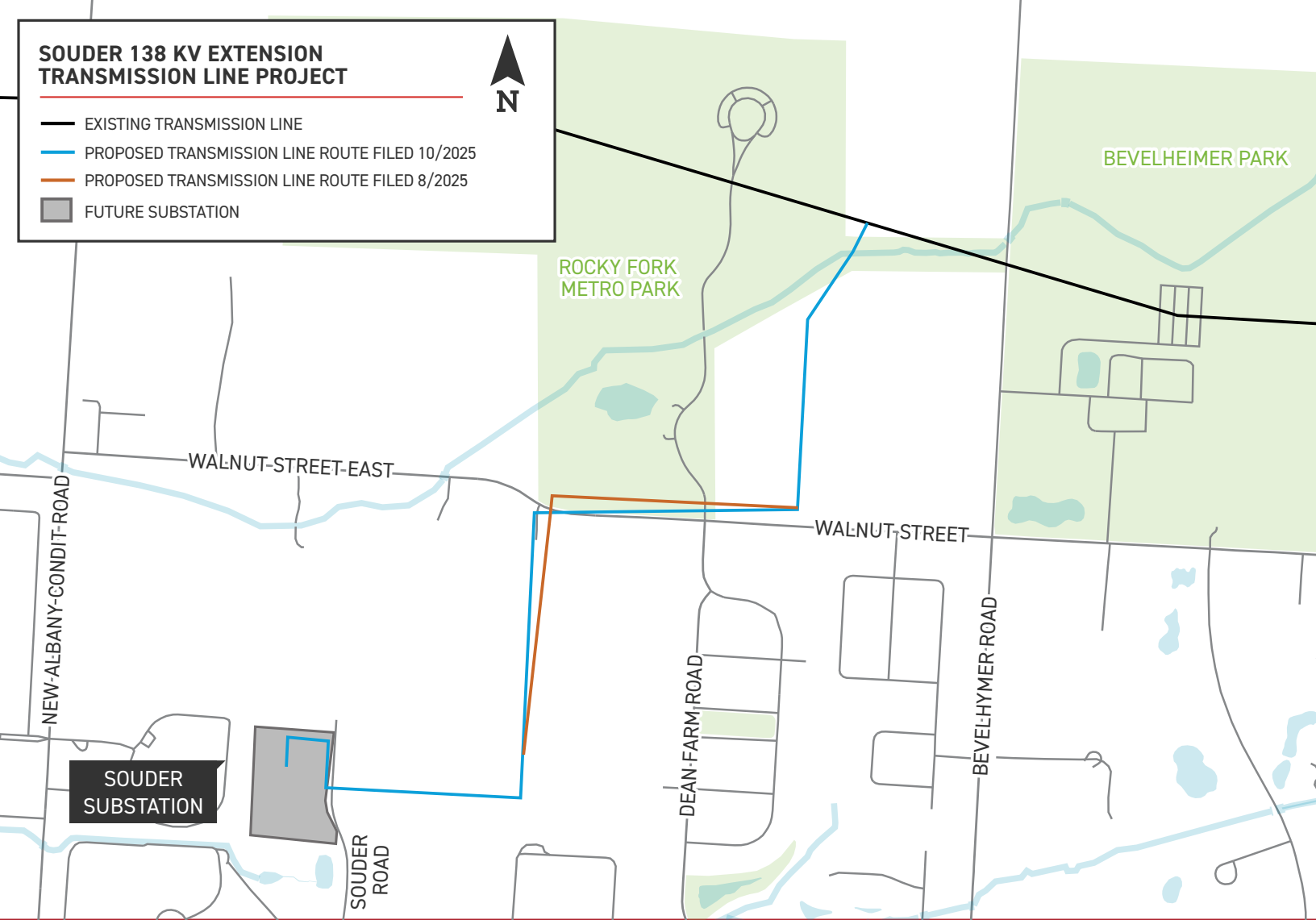
The project area includes:

- Plain Township in Franklin County
- City of Columbus
- City of New Albany



SOUDER 138 KV EXTENSION TRANSMISSION LINE PROJECT

- EXISTING TRANSMISSION LINE
- PROPOSED TRANSMISSION LINE ROUTE FILED 10/2025
- PROPOSED TRANSMISSION LINE ROUTE FILED 8/2025
- FUTURE SUBSTATION



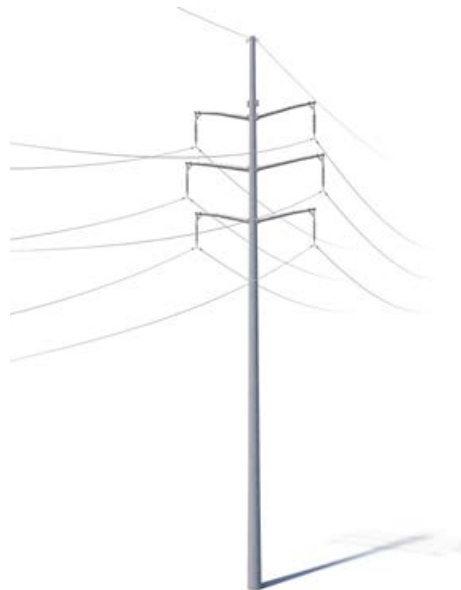
TYPICAL STRUCTURES

This project involves the use of steel single-pole structures.

Typical Pole Height: [Approximately 120-165 feet*](#)

Typical Right-of-Way Width: [Approximately 100 feet*](#)

*Exact structure height and right-of-way may vary



*Exact structure, height, and right-of-way requirements may vary.

WE VALUE YOUR INPUT. PLEASE SEND COMMENTS AND QUESTIONS TO:

STEPHANIE EISENBERG • WSP REPRESENTING AEP OHIO
OUTREACH@AEP OHIOTRANSMISSION.COM • 614-259-8201
AEP OHIO.COM/SOUDER



11/17/2025