



NORTHEAST LIMA-COLUMBUS GROVE

TRANSMISSION IMPROVEMENTS PROJECT

WELCOME TO OUR VIRTUAL OPEN HOUSE

As a result of the COVID-19 pandemic and social distancing recommendations made by the Centers for Disease Control and Prevention (CDC), AEP Ohio invites you to attend this virtual open house in order to minimize in-person contact. AEP Ohio remains committed to listening to your concerns and answering your questions, but we are also committed to keeping our customers and employees safe and healthy. We welcome your feedback via telephone and email as we strive to make the most informed decisions possible.

PROJECT NEED & BENEFITS

WHY IS THE PROJECT IMPORTANT TO OUR COMMUNITY?

PROJECT BENEFITS INCLUDE:

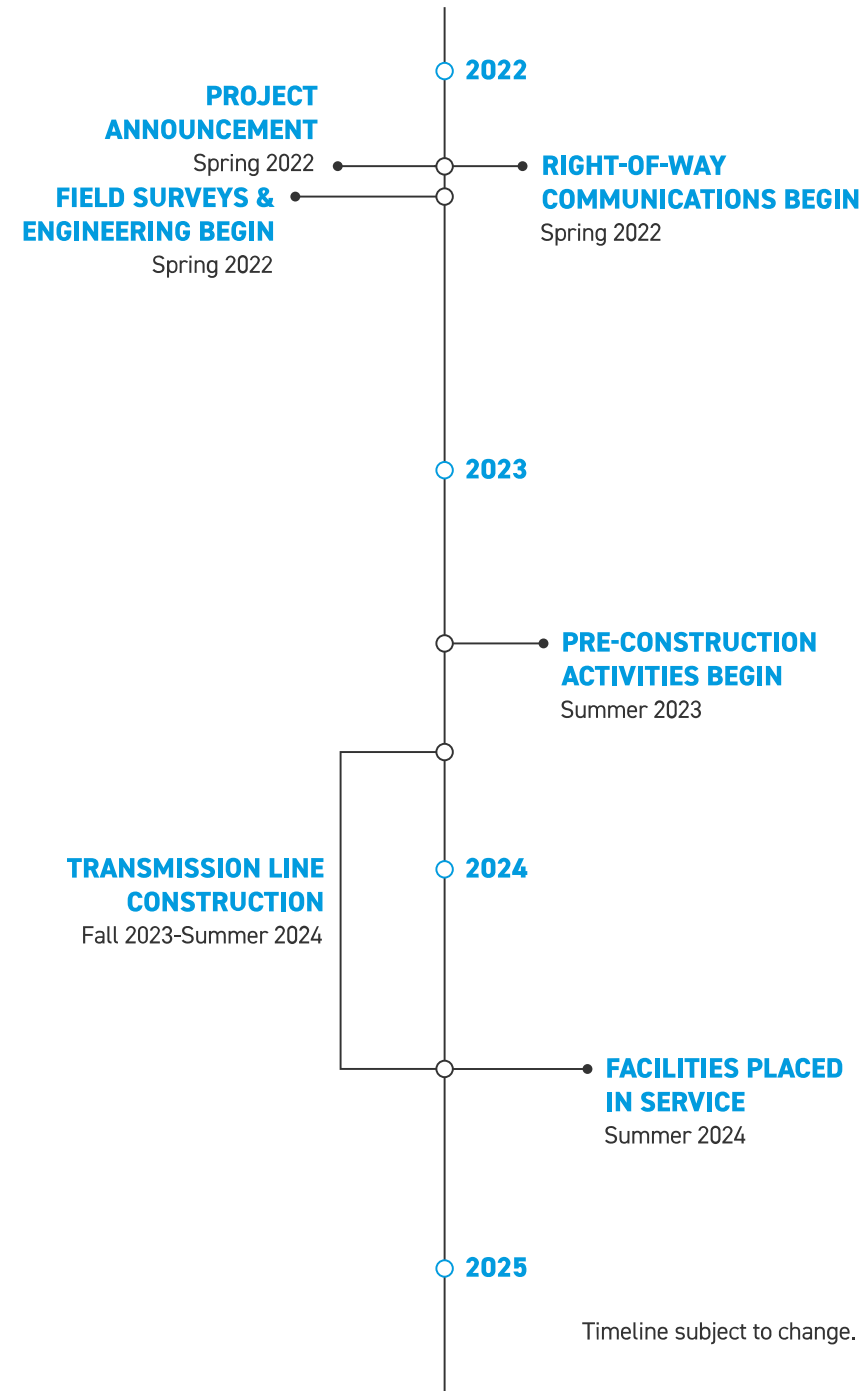
- Replacing 1950s wooden poles with modern steel poles
- Building a new power line provides an additional power source and improves the area's operational performance
- Enhancing area electric reliability by reducing wide, community-sustained outages, including local distribution



An AEP Company

BOUNDLESS ENERGY™

PROJECT SCHEDULE

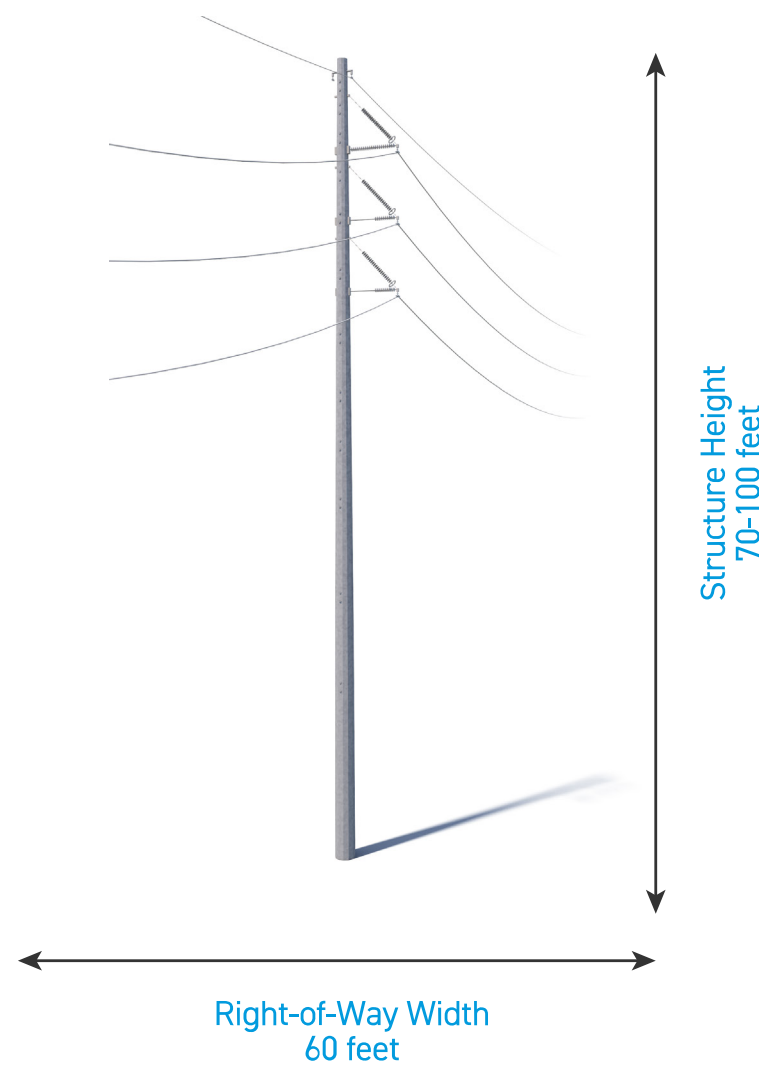
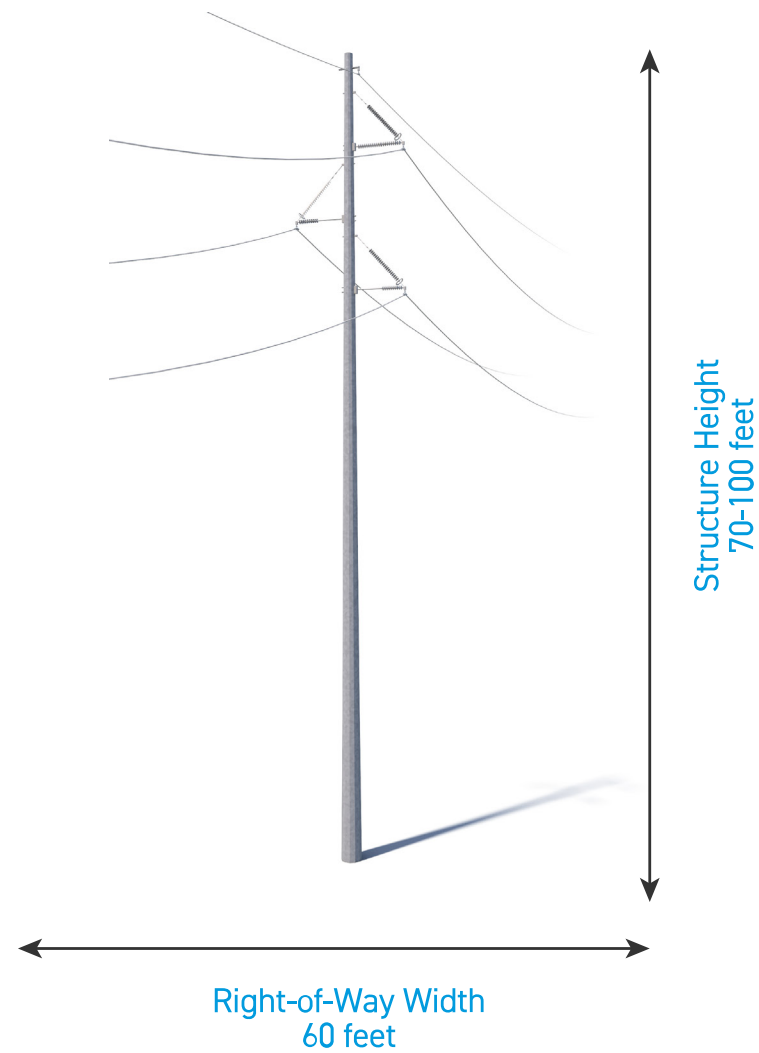




An AEP Company

BOUNDLESS ENERGY™

PROPOSED STRUCTURES



Crews plan to use single steel poles.

Typical Structure Height: 70 - 100 feet

Typical Right-of-Way Width: 60 feet

*Exact structure, height, and right-of-way requirements may vary.

RIGHT-OF-WAY

AEP OHIO HAS TWO KEY PHILOSOPHIES THAT PERTAIN TO POWER LINE RIGHTS-OF-WAY:



1 Routes should cause the least possible disturbance to people and the environment.



2 Property owners should be fairly compensated for any land rights that must be acquired.

RIGHT-OF-WAY

AEP Ohio studies the land and proposes routes that reduce impacts on property owners.

AEP Ohio reaches out to landowners in the following ways:

TO GAIN RIGHT-OF-ENTRY TO BEGIN:

- Environmental assessments
- Appraisal work
- Land surveying, soil boring and other field activities
- Cultural and historic resource reviews

TO SECURE RIGHT-OF-WAY AND COMMUNICATE:

- Landowner compensation
- Terms and conditions of easement
- Width of the right-of-way

TO OUTLINE AEP OHIO'S CONSTRUCTION PROCESS WITH A SPECIFIC FOCUS ON:

- Property restoration
- Damage mitigation as appropriate



NORTHEAST LIMA-COLUMBUS GROVE

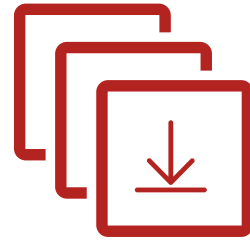
TRANSMISSION IMPROVEMENTS PROJECT

THANK YOU!

Thank you for visiting the project virtual open house. For more information and project updates please visit the project website, or contact us with any additional questions.



**REPLAY
OPEN HOUSE**



**DOWNLOAD
SLIDE DECK**



CONTACT US



**VISIT PROJECT
WEBSITE**