

LOTT

138-KV TRANSMISSION LINE PROJECT



An AEP Company

BOUNDLESS ENERGY™

AEP Ohio officials plan to strengthen the electric transmission system in Delaware County. The project involves building approximately 4 miles of 138-kilovolt (kV) transmission line and installing a new switch pole to help improve electric reliability for customers.

WHAT

- Building about 4 miles of power line and a switch pole north of Locust Drive

*This project requires Ohio Power Siting Board (OPSB) approval

WHY

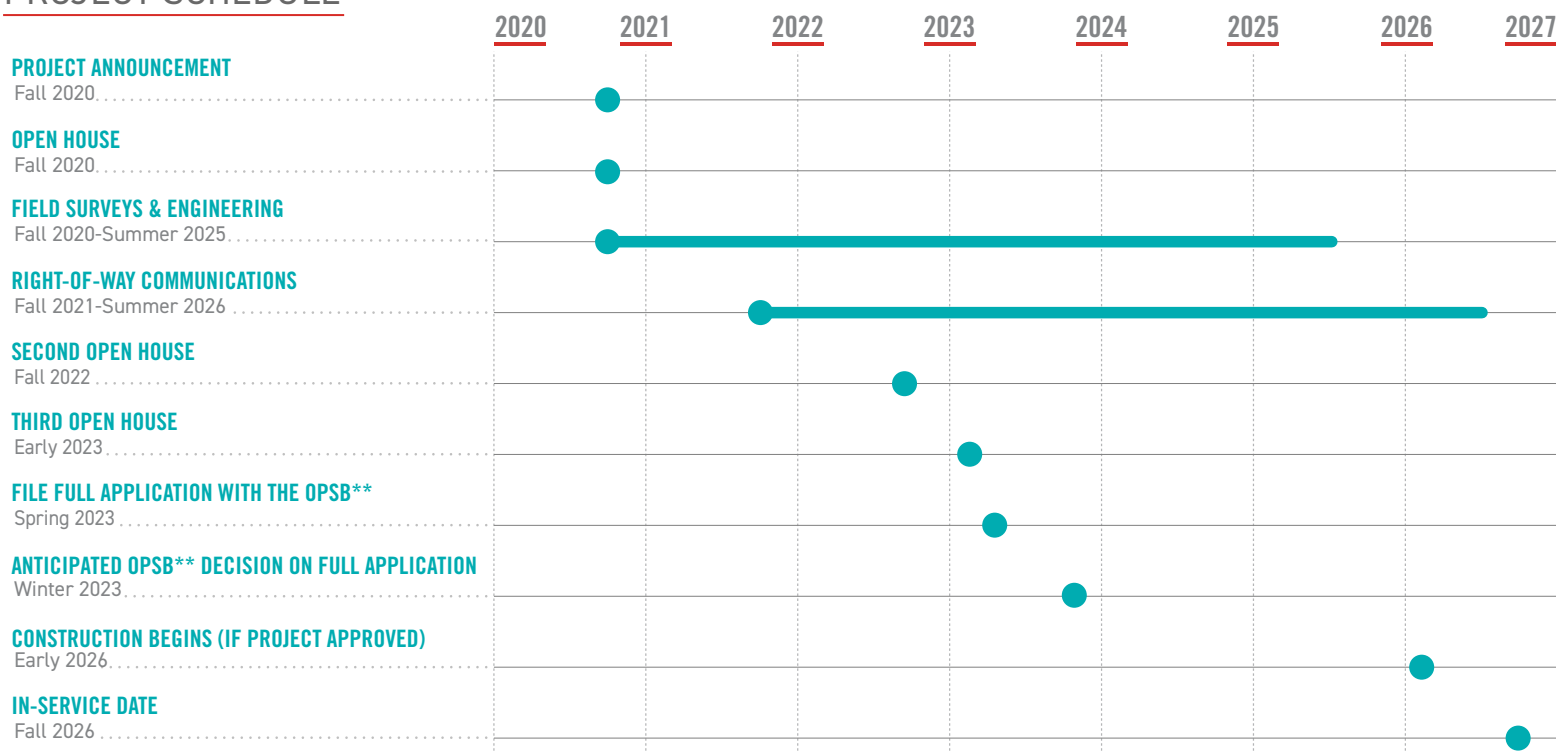
The proposed powerline provides an enhanced power source to Consolidated Cooperative's Lott Substation from AEP Ohio's Centerburg – Trent 138-kilovolt (kV) transmission line. The existing 34.5-kV power line has experienced nearly 5 million customer minutes of interruption since 2013. By connecting a 138-kV power line to the Lott Substation, Consolidated Cooperative can better serve area customers.

WHERE

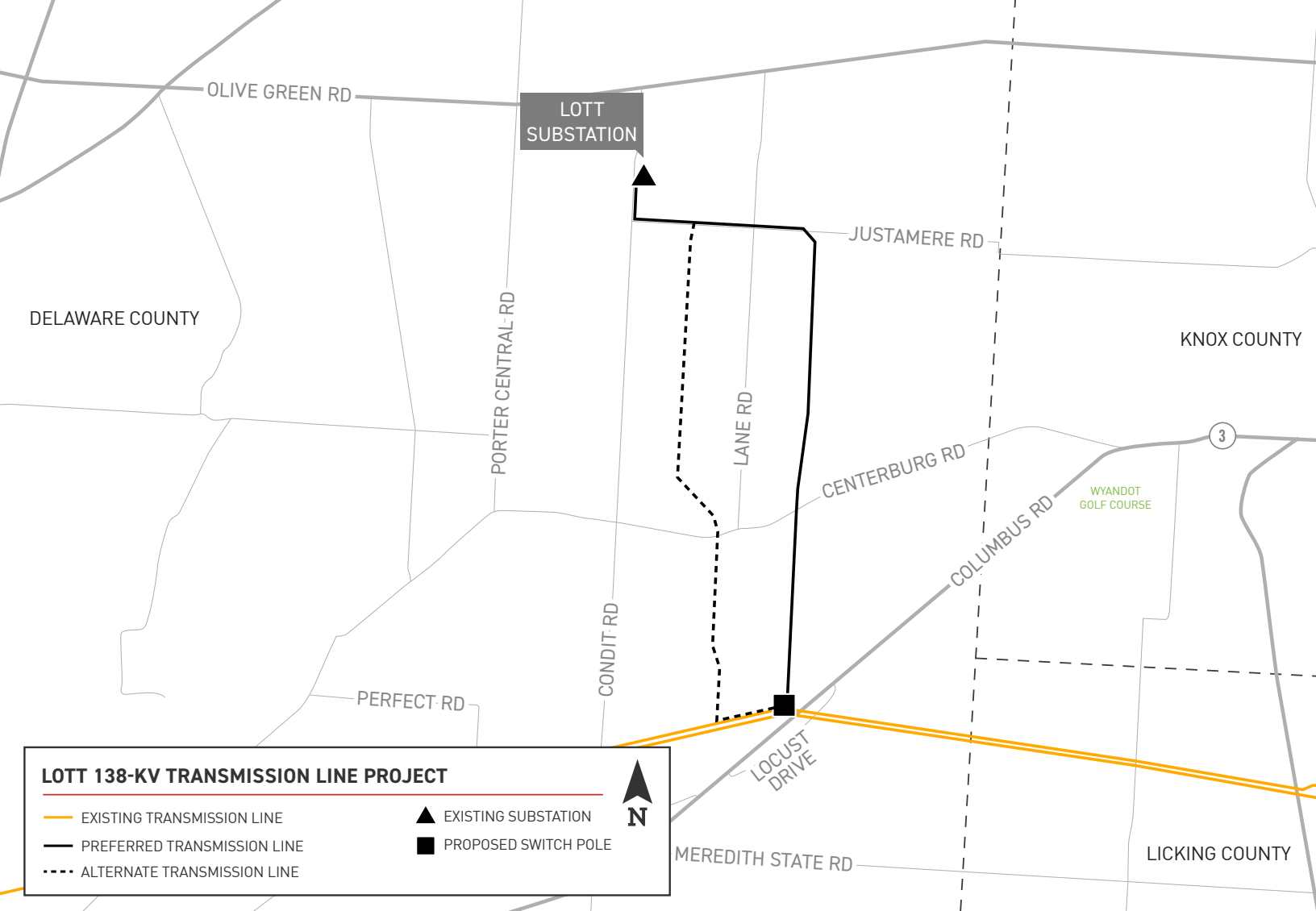
The project area includes Porter and Trenton townships in Delaware County.



PROJECT SCHEDULE



**Timeline subject to change. *OPSB: Ohio Power Siting Board



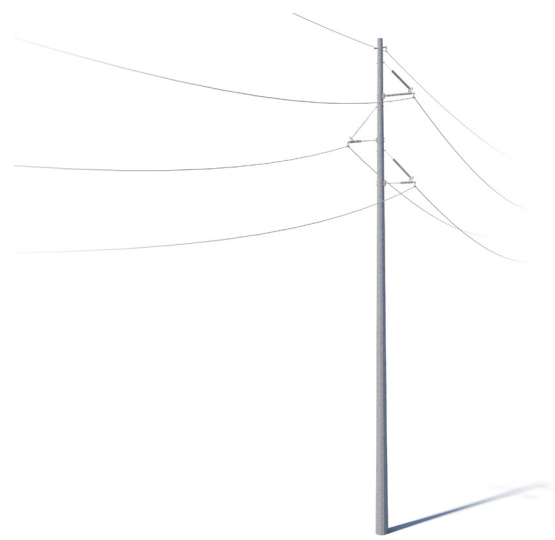
TYPICAL STRUCTURES

The project involves the use of single, steel poles.

Structure Height: **Approximately 80 -100 feet***

Right-of-Way Width: **Approximately 100 feet***

*Exact structure, height and right-of-way requirements may vary



AEP OHIO VALUES YOUR INPUT ABOUT THIS PROJECT. PLEASE SEND COMMENTS AND QUESTIONS TO:

✉ AEP Ohio
 c/o Joseph Demaree
 8500 Smiths Mill Road
 New Albany, OH 43054

✉ jkdemaree@aep.com
 ☎ 614-933-2998
 📍 AEPOhio.com/Lott

