

# BLACK DIAMOND-STILLWELL TRANSMISSION LINE REBUILD PROJECT

AEP Ohio representatives plan power grid upgrades to improve electric reliability for customers in Holmes County. The Black Diamond-Stillwell Transmission Line Rebuild Project involves rebuilding about 17 miles of power line, building three substations and upgrading a substation.

## WHAT

The project involves:

- Rebuilding about 17 miles of 69-kilovolt power line in Holmes County.
- Some segments of the power line are under review as route alternatives. See the enclosed map for more information on the location of the proposed study segments.
- Building Black Diamond Substation off County Road 103 in Mechanic Township, Holmes County.
- Building Fort Fizzle Substation off SR-520 in Richland Township, Holmes County.
- Building Schlegel Substation off SR-754 in Ripley Township, Holmes County.
- Expanding Millersburg Substation off Deetz Street in Millersburg.
- Retiring South Millersburg Substation off US-62 in Mechanic Township, Holmes County.

## WHY

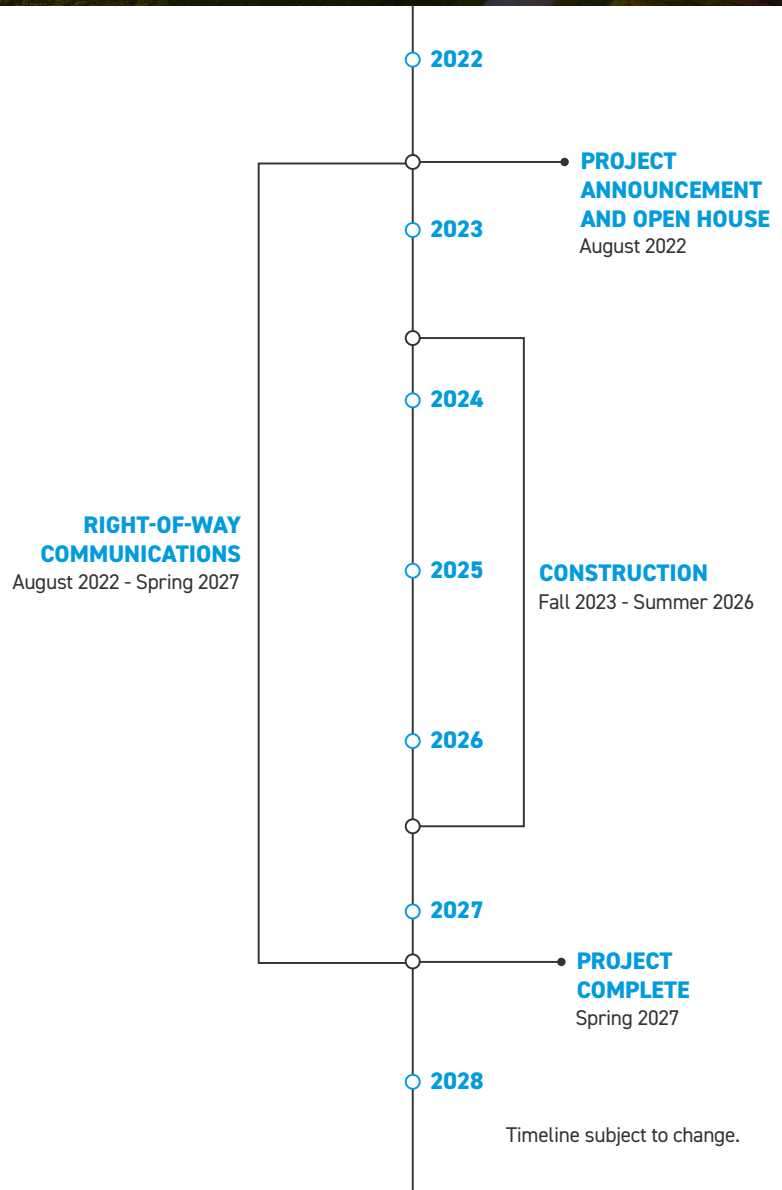
The improvements:

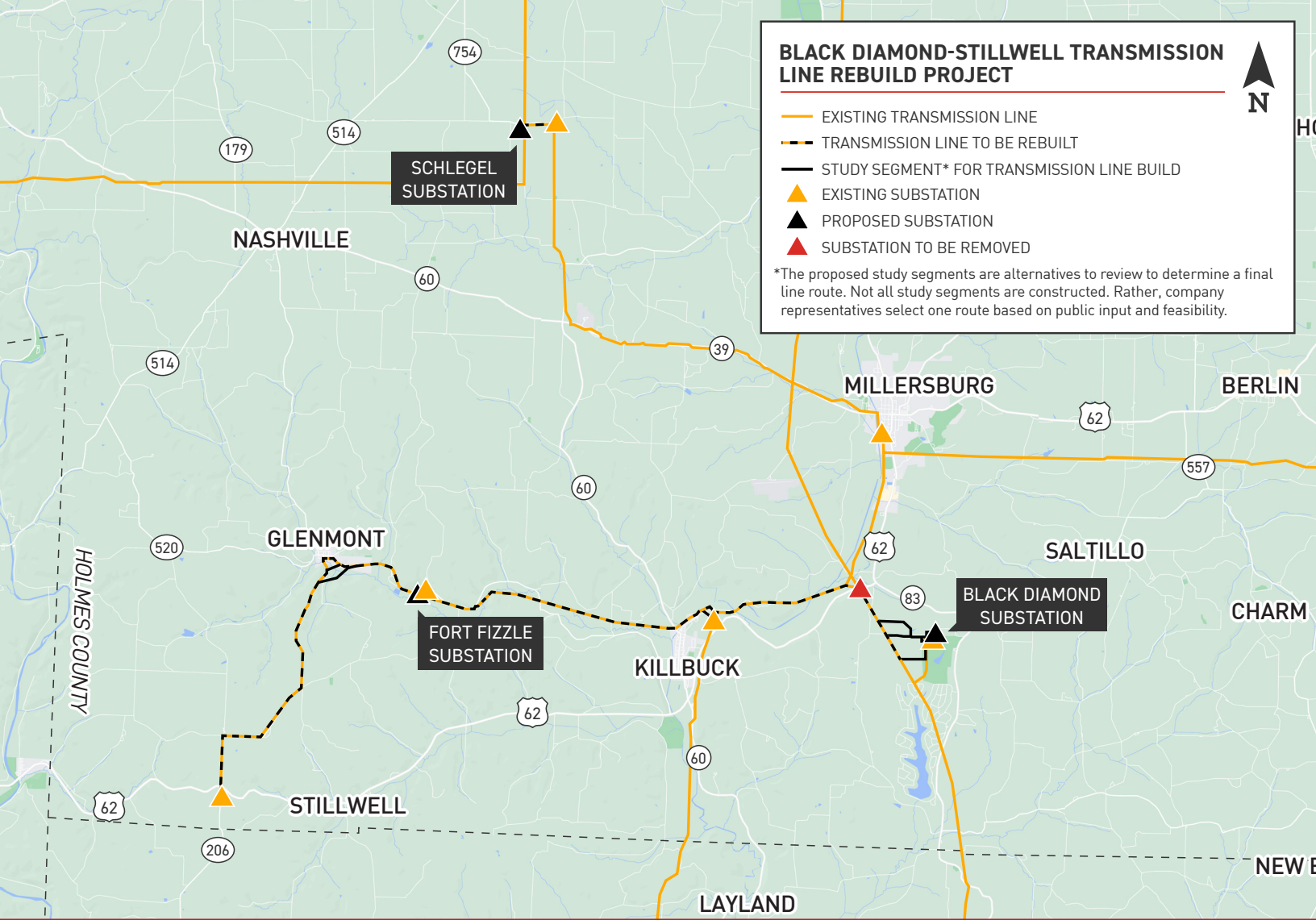
- Replace an existing power line that dates back to the 1920s.
- Improve electric service reliability for the Energy Cooperative and Holmes-Wayne Electric Cooperative.
- The improvements help reduce wide, community sustained outages, support the current power demand and enhance system resiliency.

## WHERE

The project area includes:

- Richland, Killbuck, Mechanic and Ripley townships in Holmes County
- Village of Millersburg
- Village of Killbuck



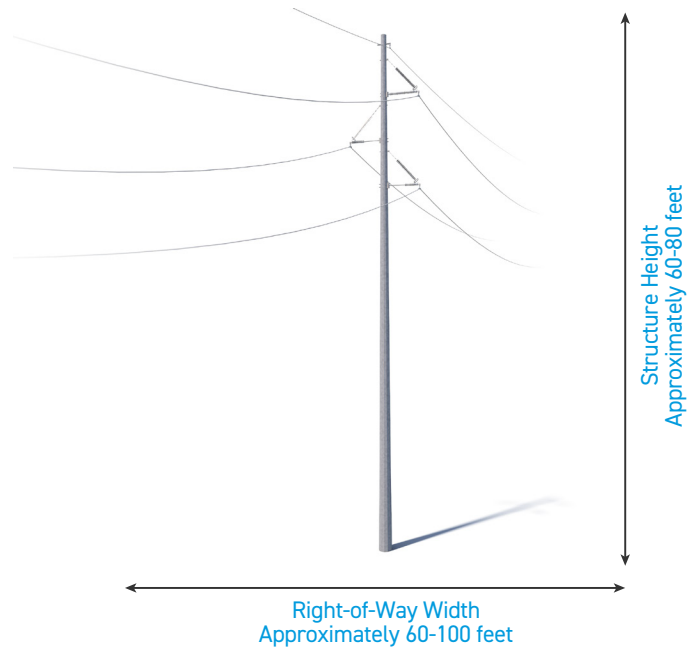


## TYPICAL STRUCTURES

The project involves the use of single steel poles.

Structure Height: [Approximately 60-80 feet\\*](#)

Right-of-Way Width: [Approximately 60-100 feet\\*](#)



\*Exact structure, height, and right-of-way requirements may vary.

**WE VALUE YOUR INPUT. PLEASE SEND COMMENTS AND QUESTIONS TO:**

JOE DEMAREE · PROJECT OUTREACH SPECIALIST

JKDEMAREE@AEP.COM · 380-205-5046

AEP OHIO.COM/BLACKDIAMOND

