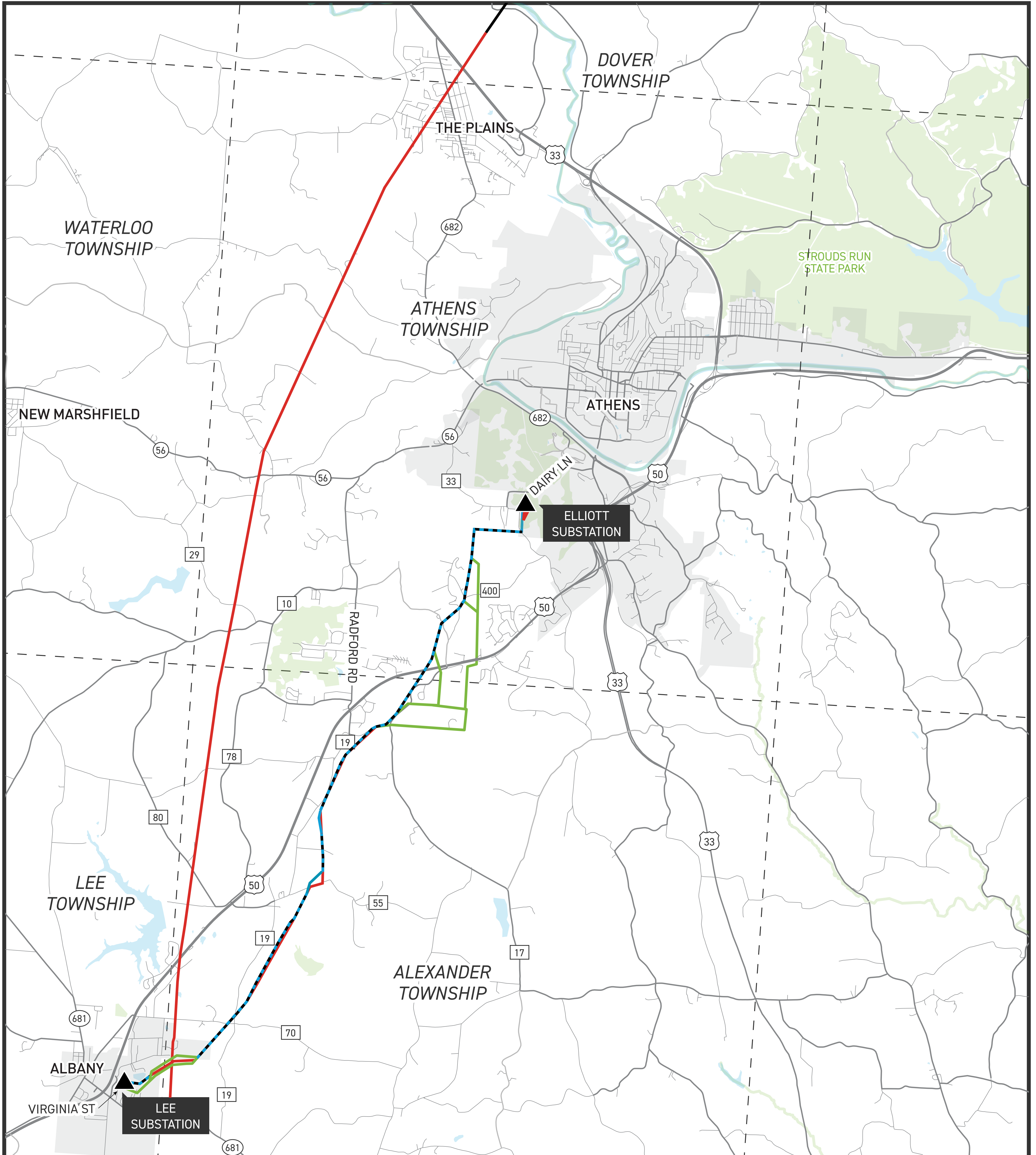


# ATHENS

## AREA IMPROVEMENTS PROJECT



### ATHENS AREA IMPROVEMENTS PROJECT

- TRANSMISSION LINE TO BE BUILT
- STUDY SEGMENT\* FOR TRANSMISSION LINE TO BE BUILT
- EXISTING TRANSMISSION LINE
- - STUDY SEGMENT\* FOR EXISTING TRANSMISSION LINE TO BE REBUILT
- TRANSMISSION FACILITIES TO BE REMOVED
- - TOWNSHIP BOUNDARY
- ▲ EXISTING SUBSTATION



\*Study segments are multiple alternatives presented to determine a line route. Company representatives do not build all study segments but rather they select one route to build based on public feedback and feasibility.