

HARTFORD AREA IMPROVEMENTS PROJECT

Indiana Michigan Power representatives plan power grid upgrades to improve electric reliability for customers in Berrien and Van Buren counties in Michigan. The Hartford Area Improvements Project involves rebuilding approximately 33 miles of electric transmission line and upgrading a substation.

WHAT

The project involves:

- Rebuilding approximately 15 miles of 138-kilovolt (kV) transmission line between Benton Harbor and Hartford
- Rebuilding approximately 18 miles of 69-kV transmission line between Hartford, Bangor and South Haven
- Upgrading equipment at Bangor Substation off West Arlington Street

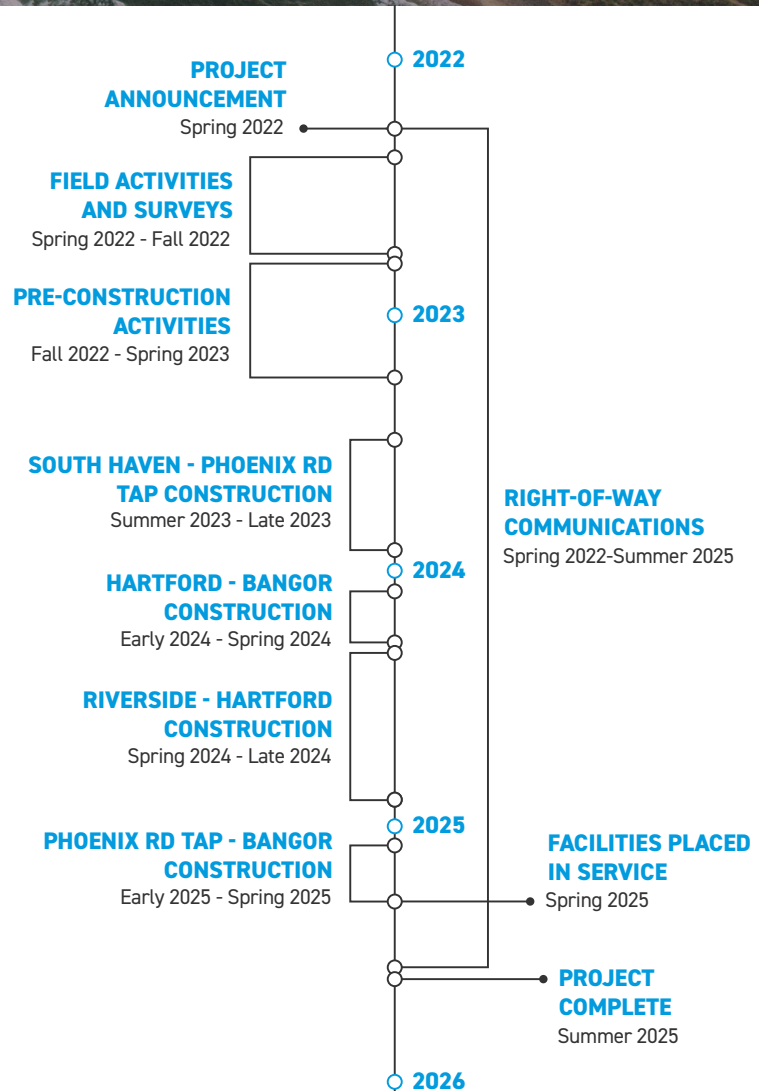
WHY

The project strengthens the electric transmission system by replacing deteriorating wooden poles from the 1950s with modern steel poles. The existing transmission line has experienced more than 20 outages since 2015 and requires frequent maintenance in its current condition. The project improves the line's operational performance, reduces the likelihood of extended power outages and enhances electric reliability for area customers.

WHERE








The project area includes:

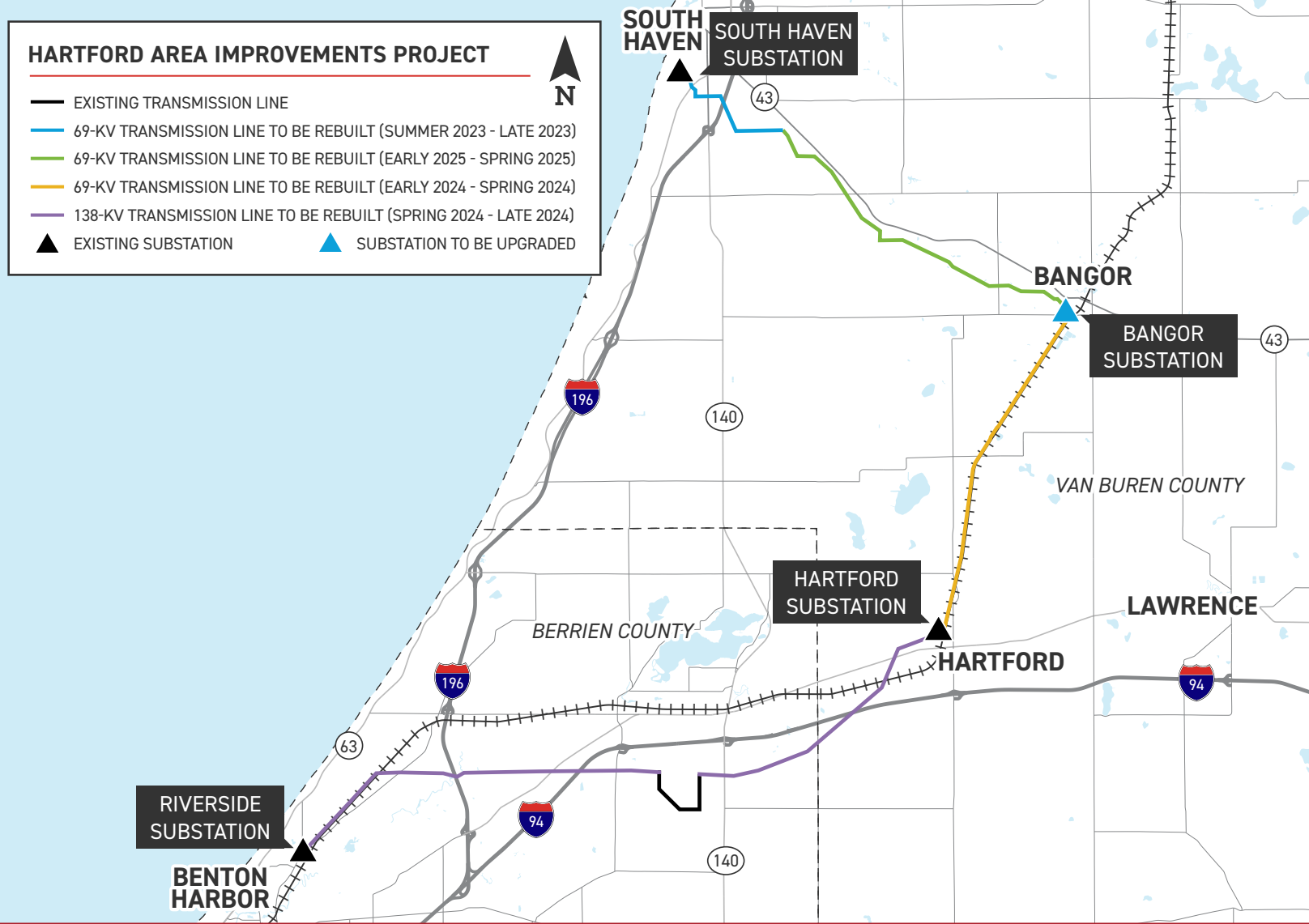
- Benton Harbor
- Hartford
- Bangor
- South Haven
- Benton, Hagar, Coloma and Watervliet townships in Berrien County
- Hartford, Bangor, Geneva and South Haven townships in Van Buren County



Timeline subject to change.

HARTFORD AREA IMPROVEMENTS PROJECT

-  EXISTING TRANSMISSION LINE
-  69-KV TRANSMISSION LINE TO BE REBUILT (SUMMER 2023 - LATE 2023)
-  69-KV TRANSMISSION LINE TO BE REBUILT (EARLY 2025 - SPRING 2025)
-  69-KV TRANSMISSION LINE TO BE REBUILT (EARLY 2024 - SPRING 2024)
-  138-KV TRANSMISSION LINE TO BE REBUILT (SPRING 2024 - LATE 2024)
-  EXISTING SUBSTATION
-  SUBSTATION TO BE UPGRADED



TYPICAL STRUCTURES

The project involves installing steel poles.

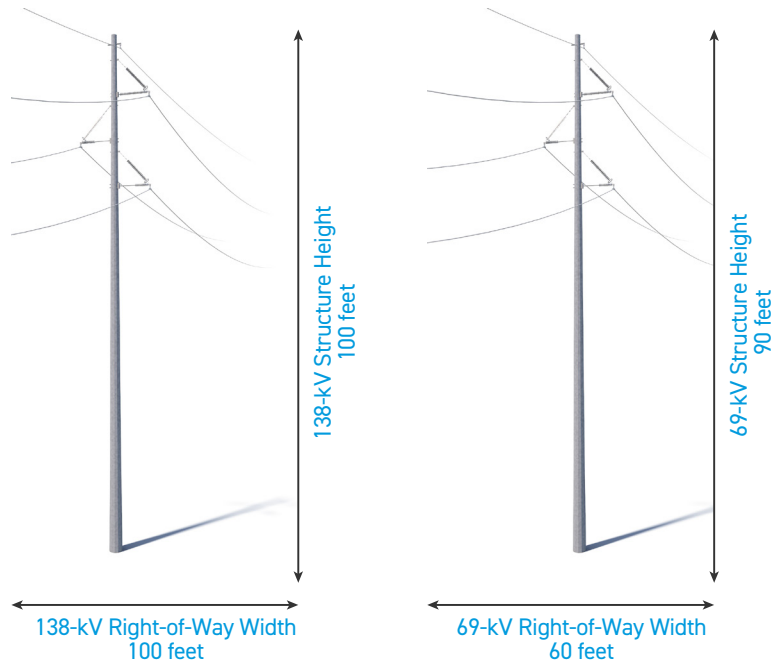
Typical Structures Between Benton Harbor and Hartford:

- Typical Pole Height:
Approximately 100 feet*
- Typical Right-of-Way Width:
Approximately 100 feet*

Typical Structures Between Hartford, Bangor and South Haven:

- Typical Pole Height:
Approximately 90 feet*
- Typical Right-of-Way Width:
Approximately 60 feet*

*Exact structure, height, and right-of-way requirements may vary.



WE VALUE YOUR INPUT. PLEASE SEND COMMENTS AND QUESTIONS TO:

I&M OUTREACH TEAM

IM_OUTREACH@AEP.COM • 833-441-2260

INDIANAMICHIGANPOWER.COM/HARTFORDMICHIGAN

