

# BENTON HARBOR- RIVERSIDE TRANSMISSION IMPROVEMENTS PROJECT

Indiana Michigan Power representatives plan power grid upgrades to improve electric reliability for customers in Berrien County, Michigan. The Benton Harbor-Riverside Transmission Improvements Project upgrades about 4 miles of 34.5-kilovolt transmission line with modern equipment to better serve area customers.

## WHAT

The project involves:

- Rebuilding approximately 2 miles of transmission line between Riverside Substation off Paw Paw Avenue and Benton Harbor Water Works Substation off Ridgeway Street
  - Relocating a half mile of transmission line to the south side of Klock Road, between North 8th Street and Paw Paw Avenue
- Rebuilding approximately 1 mile of transmission line between Benton Harbor Water Works Substation and an existing structure near Whitwam Drive and State Highway 63
- Rebuilding about a quarter mile of transmission line along Graham Avenue near the Renaissance Athletic Club

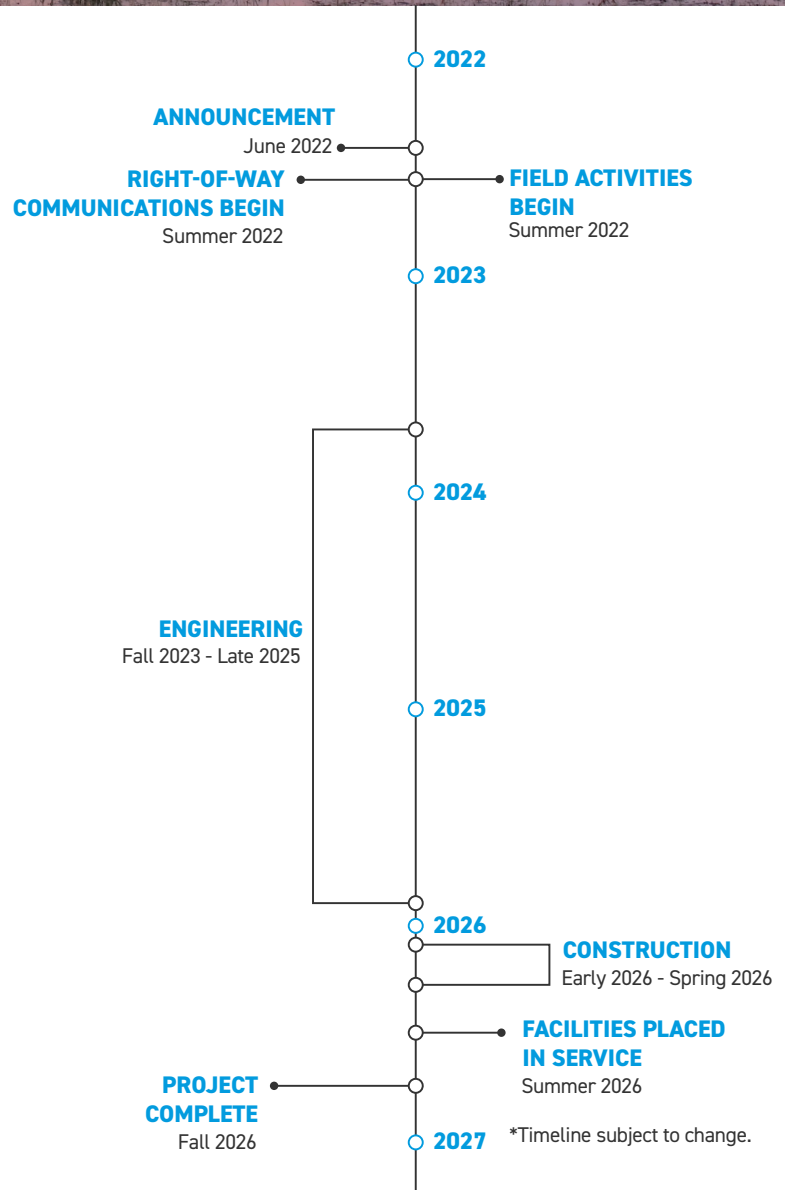
## WHY

The project strengthens the local electric transmission system by upgrading the capacity of the power line from vintage 34.5 kilovolt (kV) to modern 69 kV standards. The project also involves replacing aging lattice towers and wooden poles that date back to the 1930s with modern steel poles. Modernizing the line supports the growing demand for electricity, reduces the likelihood of extended power outages and enhances electric reliability for the community.

## WHERE

The project area includes:

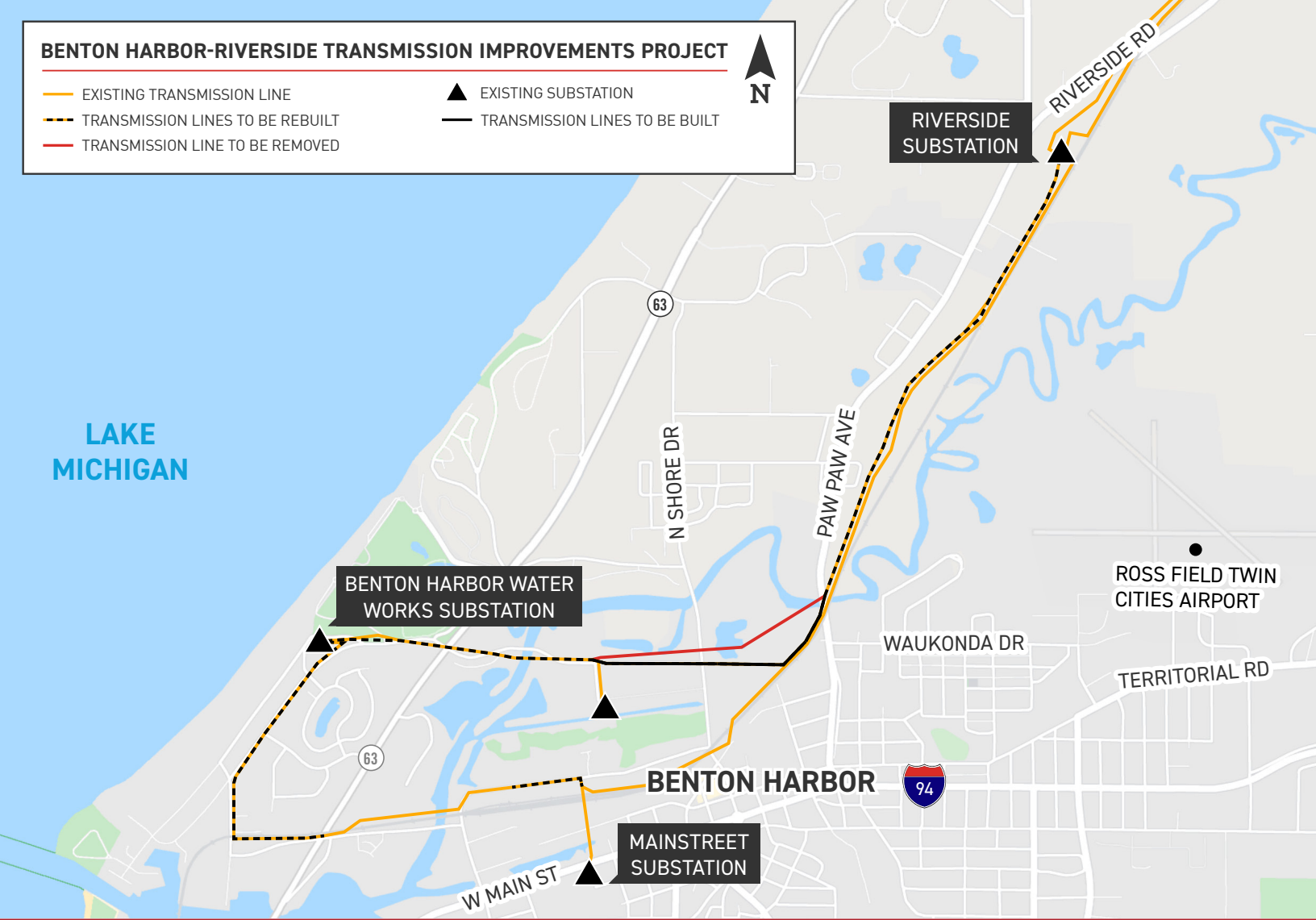
- Benton Harbor
- Berrien County



# BENTON HARBOR-RIVERSIDE TRANSMISSION IMPROVEMENTS PROJECT

- EXISTING TRANSMISSION LINE
- TRANSMISSION LINES TO BE REBUILT
- TRANSMISSION LINE TO BE REMOVED

- ▲ EXISTING SUBSTATION
- TRANSMISSION LINES TO BE BUILT

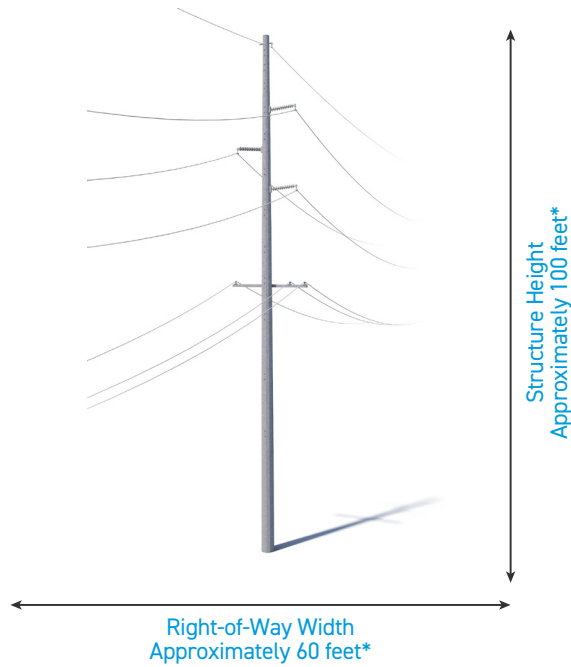


## TYPICAL STRUCTURES

The project involves installing steel poles.

Typical Pole Height: Approximately 100 feet\*

Typical Right-of-Way Width: Approximately 60 feet\*



\*Exact structure, height and right-of-way requirements may vary.

**WE VALUE YOUR INPUT. PLEASE SEND COMMENTS AND QUESTIONS TO:**

I&M OUTREACH TEAM

IM\_OUTREACH@AEP.COM • 833-441-2260

INDIANAMICHIGANPOWER.COM/BHRIVERSIDE

