

North Fort Wayne - Albion Transmission Line Rebuild Project



A unit of American Electric Power

Indiana Michigan Power (I&M) is improving the power grid in northeast Indiana. The transmission system is the backbone of the power grid. Upgrading the existing transmission facilities ensure dependable and reliable power is available for the area.



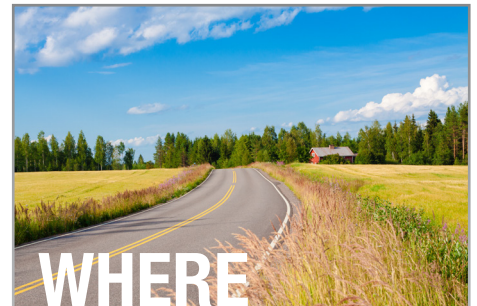
WHAT

Improvements involve upgrading approximately 20-miles of 138-kilovolt transmission line by replacing lattice towers with steel monopoles and new wire.



WHY

The existing infrastructure in the area has reached an age where it needs to be replaced. Proactively rebuilding the 1930s line improves reliability for customers across the region by decreasing power outages and speeding recovery of services when outages occur.

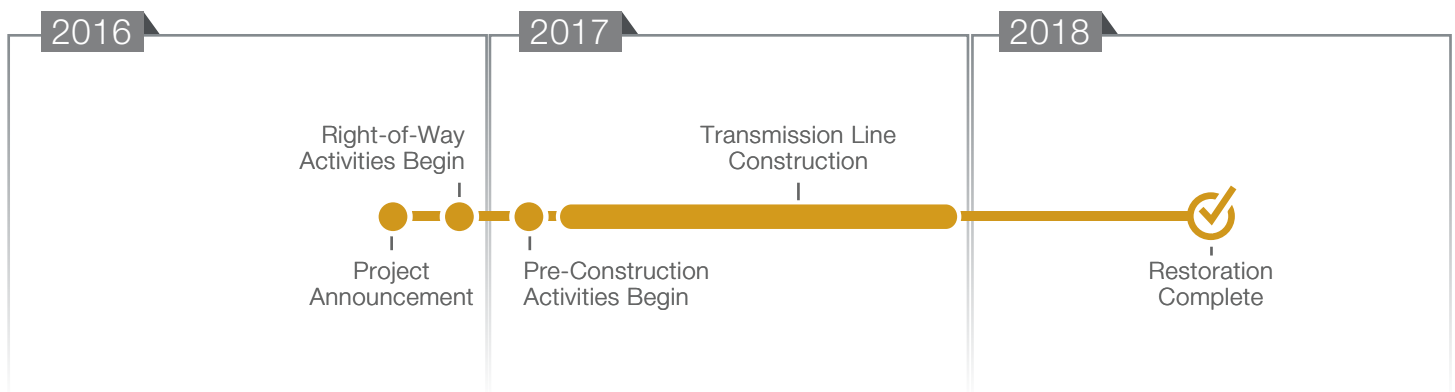


WHERE

The line in northeast Indiana connects the Robison Park and Albion substations. The improvements in Allen and Noble counties will continue to be located within existing I&M right-of-way with a few minor deviations.



Project Schedule*



*Project schedule is subject to change.

Typical Structures ^{*}

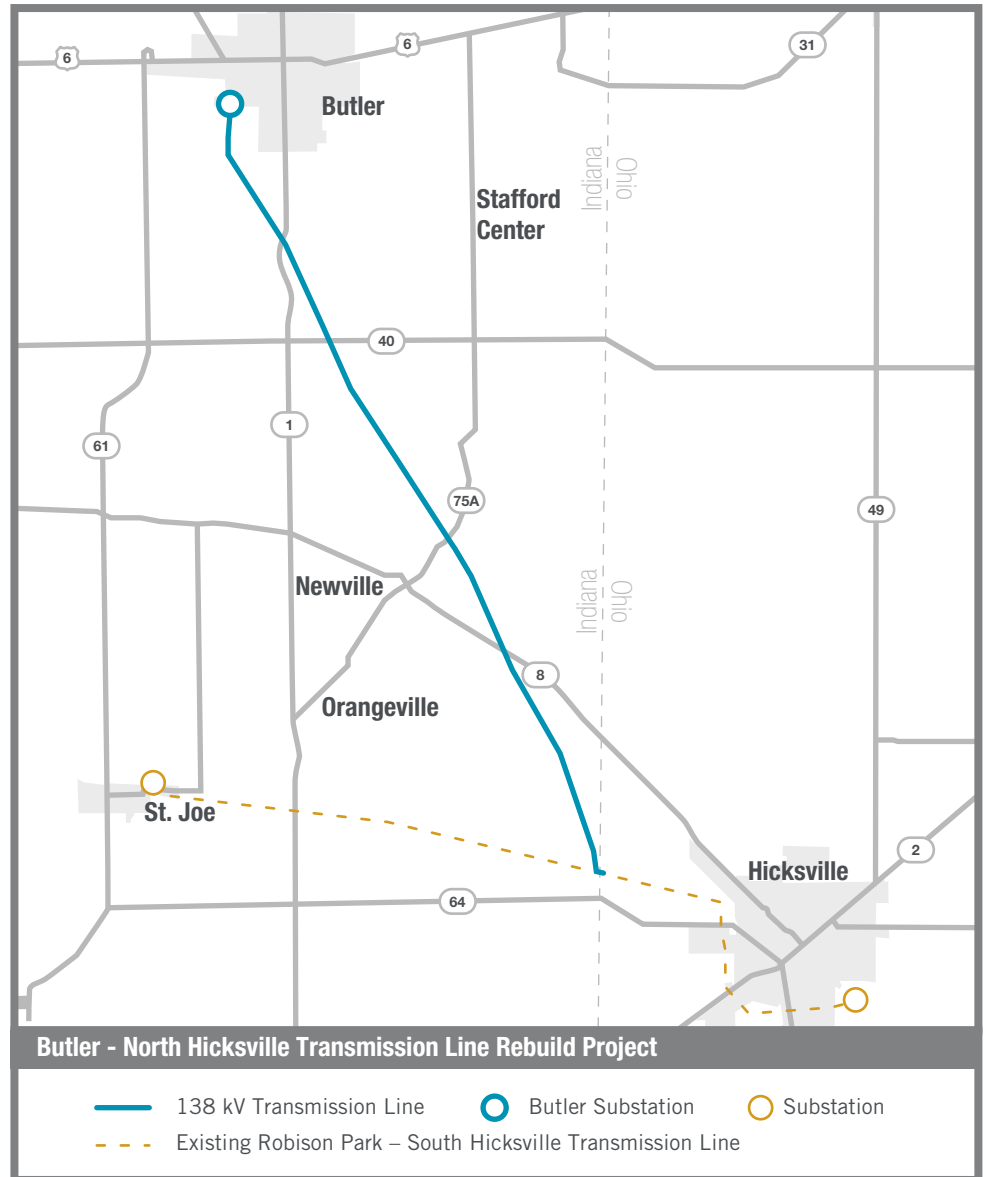
I&M will construct steel monopole structures averaging approximately 100 to 150-feet high. Structures will be located in the center of a right-of-way averaging 130-feet wide.

I&M is committed to carefully balancing the energy needs of residential and business customers while protecting the environment and natural beauty of the region.



^{*}Exact structure may vary from the one shown

Project Map



I&M values your input about this project. Please send comments and questions to:

Contact:

✉ Indiana Michigan Power
c/o Scott Yarbrough
P.O. Box 60
Fort Wayne, IN 46801

✉ sayarbrough@aep.com

☎ (260) 466-7929



A unit of American Electric Power