

# WHITLEY COUNTY

## TRANSMISSION LINE REBUILD PROJECT



Indiana Michigan Power (I&M) representatives plan to upgrade the electric transmission network serving customers in northeast Indiana. The Whitley County Transmission Line Rebuild Project involves upgrading about 15 miles of power line and rebuilding a substation to increase electric reliability in the area.

### WHAT

The project involves:

- Rebuilding approximately 15 miles of electric transmission line
- Rebuilding Columbia Substation near the intersection of County Road 400 and South 150 East

Company representatives plan to rebuild the power line in the existing right-of-way, which may require acquiring new or updating existing easements. Easements are defined land rights that property owners grant the utility to allow for the safe construction, operation, and maintenance of the power line.

### WHY

The existing transmission line consists of 60-year-old wooden poles that require frequent maintenance. An upgrade to modern steel poles reduces the need for ongoing power line maintenance and improves the line's operational performance. The planned substation upgrades also help to reduce the likelihood of larger, sustained community outages.

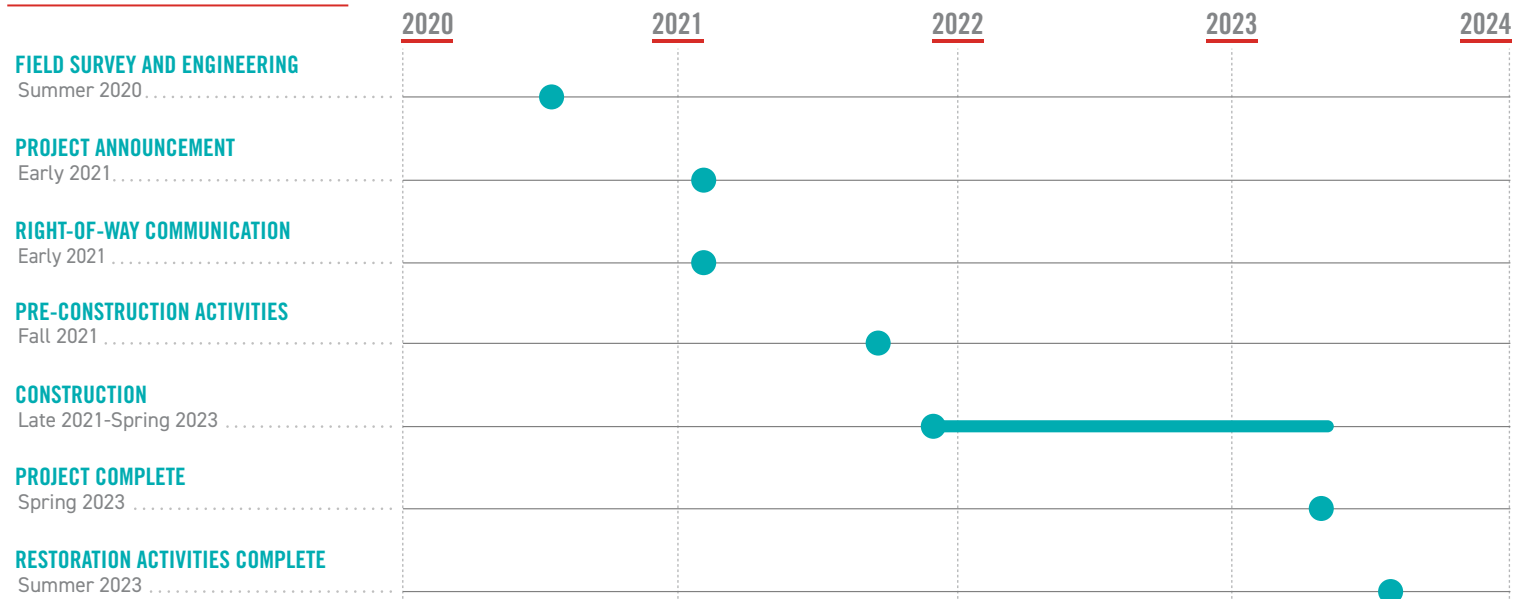
### WHERE

The project area includes:

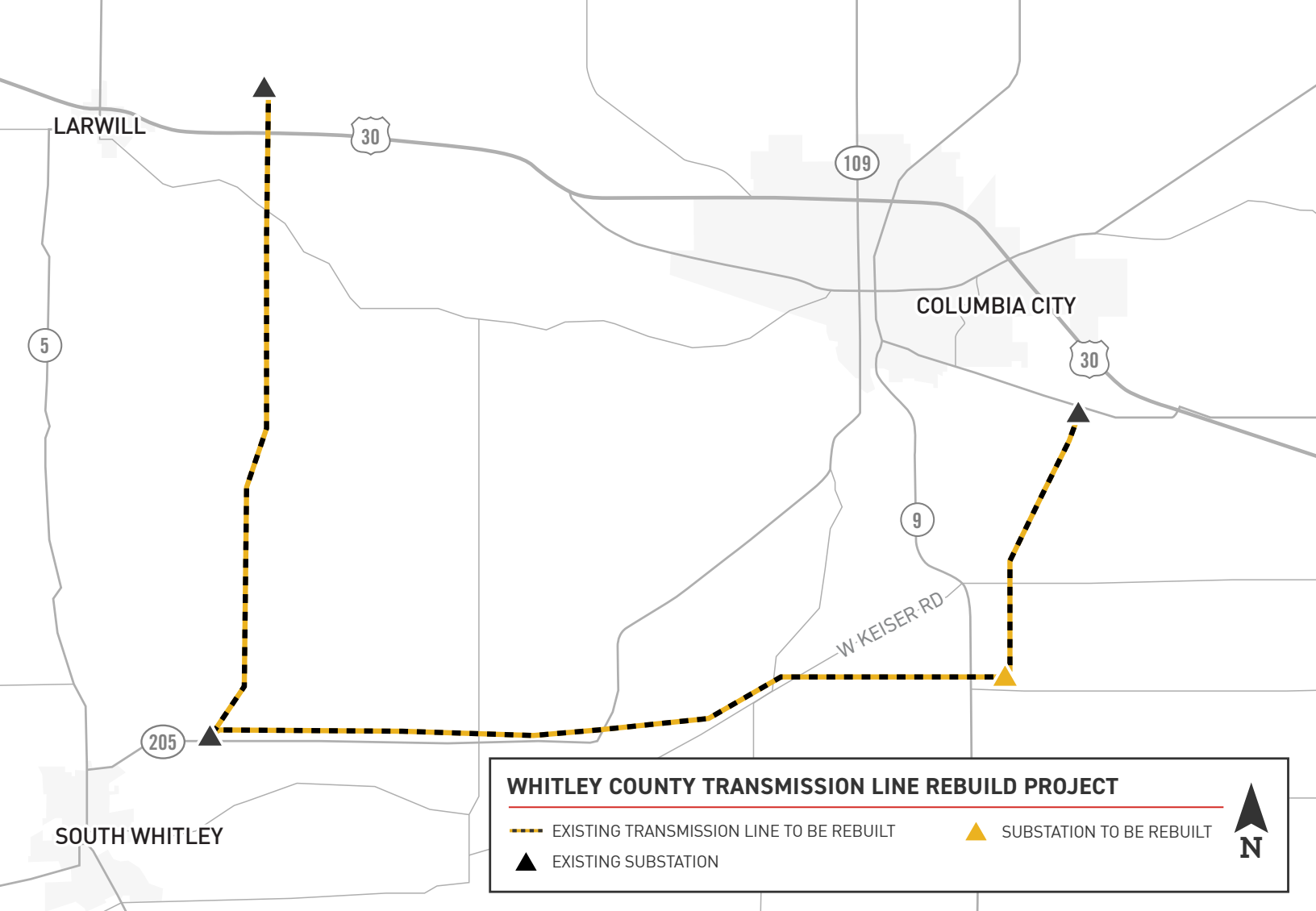
- Columbia City
- Cleveland, Columbia, Peabody, Richland and Washington townships in Whitley County



### PROJECT SCHEDULE



\*Timeline subject to change.



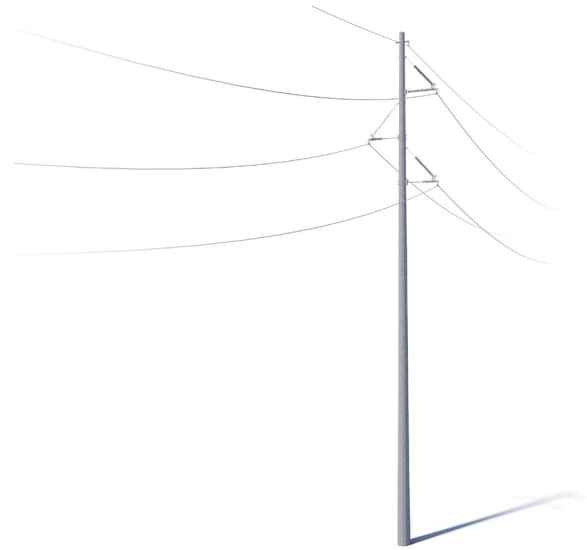
## TYPICAL STRUCTURES

The project involves installing steel poles.

Structure Height: Approximately 70-80 feet\*

Right-of-Way Width: Approximately 60 feet\*

\*Exact structure, height and right-of-way requirements may vary



**I&M VALUES YOUR INPUT ABOUT THIS PROJECT. PLEASE SEND COMMENTS AND QUESTIONS TO:**

Indiana Michigan Power  
 I&M Outreach Team  
 P.O. Box 60  
 Fort Wayne, IN 46801

[IM\\_Outreach@aep.com](mailto:IM_Outreach@aep.com)  


---

 833-441-2260  


---

[IndianaMichiganPower.com/WhitleyCounty](https://www.IndianaMichiganPower.com/WhitleyCounty)

