



MARKLE EXTENSION TRANSMISSION LINE PROJECT

Indiana Michigan Power (I&M) representatives plan power grid upgrades in Huntington County. The upgrades support Heartland Rural Electric Membership Corporation (REMC) and address the growing power demand in the area, enhancing electric reliability for customers. Crews expect construction to begin summer 2026 and conclude fall 2026.

WHAT

- The project involves:
- Building about 3 miles of 138-kilovolt (kV) power line.
 - Installing switch equipment to connect the new power line to an existing 138-kV power line.

WHY

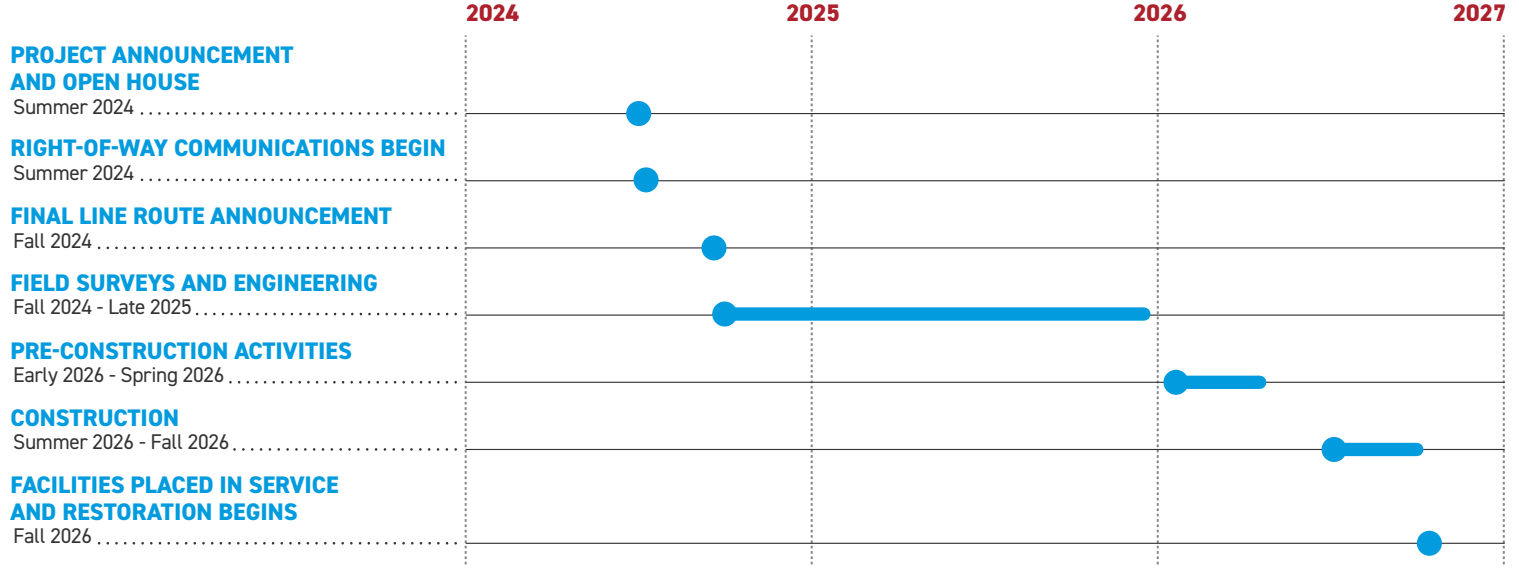
- The improvements:
- Provide electric service to the future Heartland REMC Markle Substation located off Novae Parkway, north of Markle.
 - Address the area’s growing demand for electricity by linking the substation to the power grid.
 - Allow equipment isolation during power outages to limit the number of impacted customers, ensure power grid functionality and operational flexibility.

WHERE

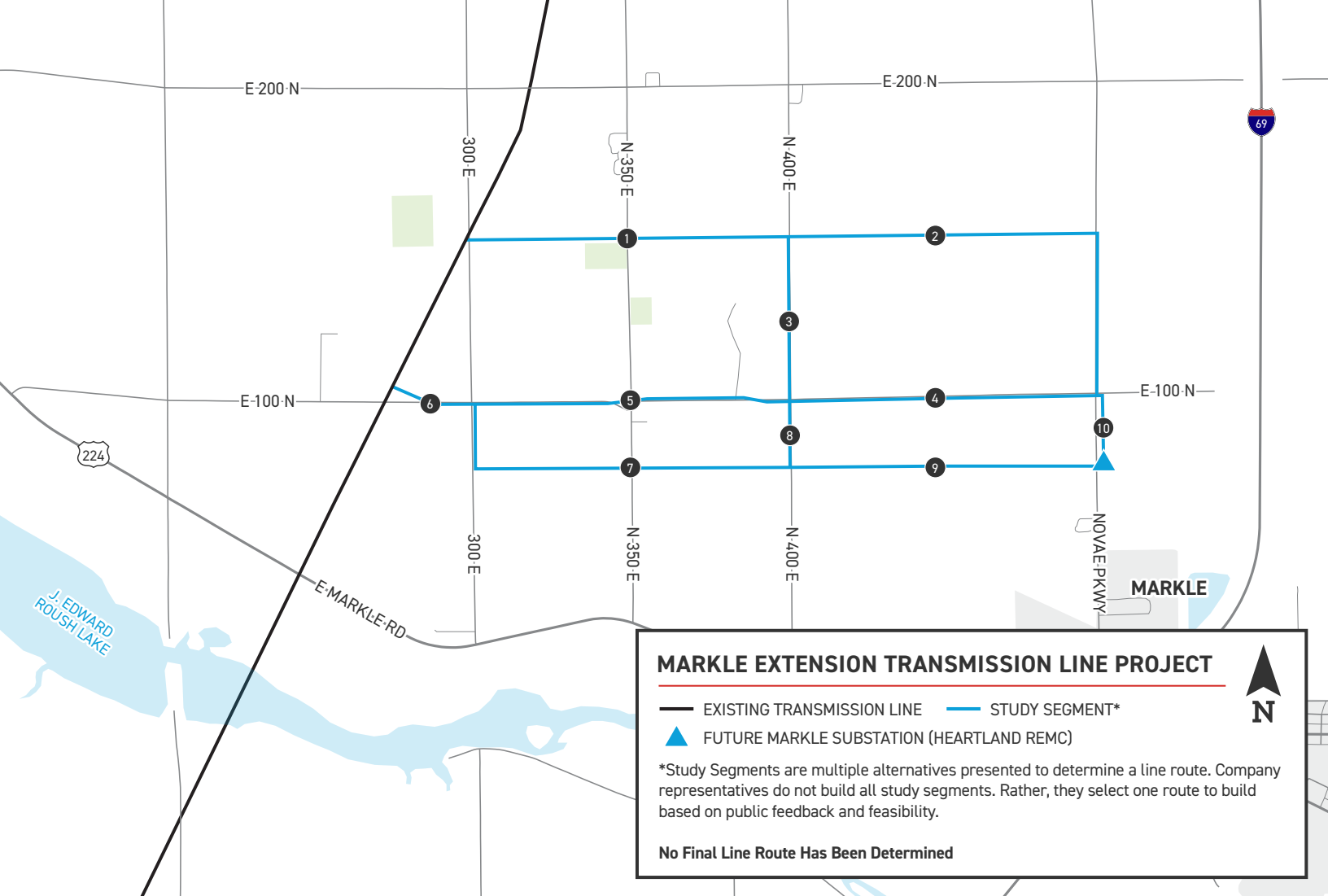
- Huntington County
- Union Township
- Town of Markle

Company representatives plan to evaluate study segments for the new power line. Study segments are multiple alternatives presented to determine a line route. Company representatives do not build all study segments. Rather, they select one route to build based on public feedback and feasibility.

PROJECT SCHEDULE



*Timeline subject to change.

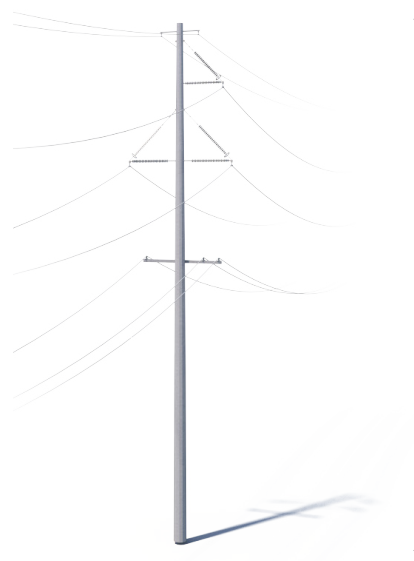


TYPICAL STRUCTURES

The project involves installing steel poles.

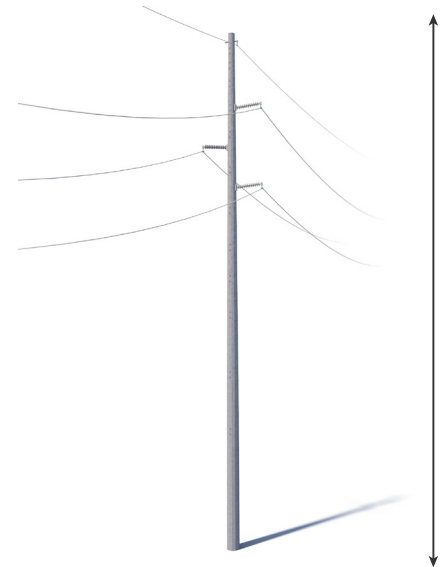
Typical Pole Height: **Approximately 85 feet***

Typical Right-of-Way Width: **Approximately 100 feet***



Typical Pole Height
Approximately 85 feet*

Typical Right-of-Way Width
Approximately 100 feet*



Typical Pole Height
Approximately 85 feet*

Typical Right-of-Way Width
Approximately 100 feet*

*Exact pole, height and right-of-way requirements may vary

WE VALUE YOUR INPUT. PLEASE SEND COMMENTS AND QUESTIONS TO:

IM_OUTREACH@AEP.COM · 833-441-2260

INDIANAMICHIGANPOWER.COM/MARKLE

