



SOUTH CASS COUNTY TRANSMISSION LINE PROJECT

Indiana Michigan Power representatives plan power grid upgrades to improve electric reliability for customers in southern Cass County. The South Cass County Transmission Line Project involves building approximately 3 miles of 138-kilovolt (kV) electric transmission line.

WHAT

The project involves:

- Building Surges Road Substation off Surges Road in Milton Township.
- Building approximately 3 miles of 138-kilovolt electric transmission line connecting Surges Road Substation to an existing transmission line.

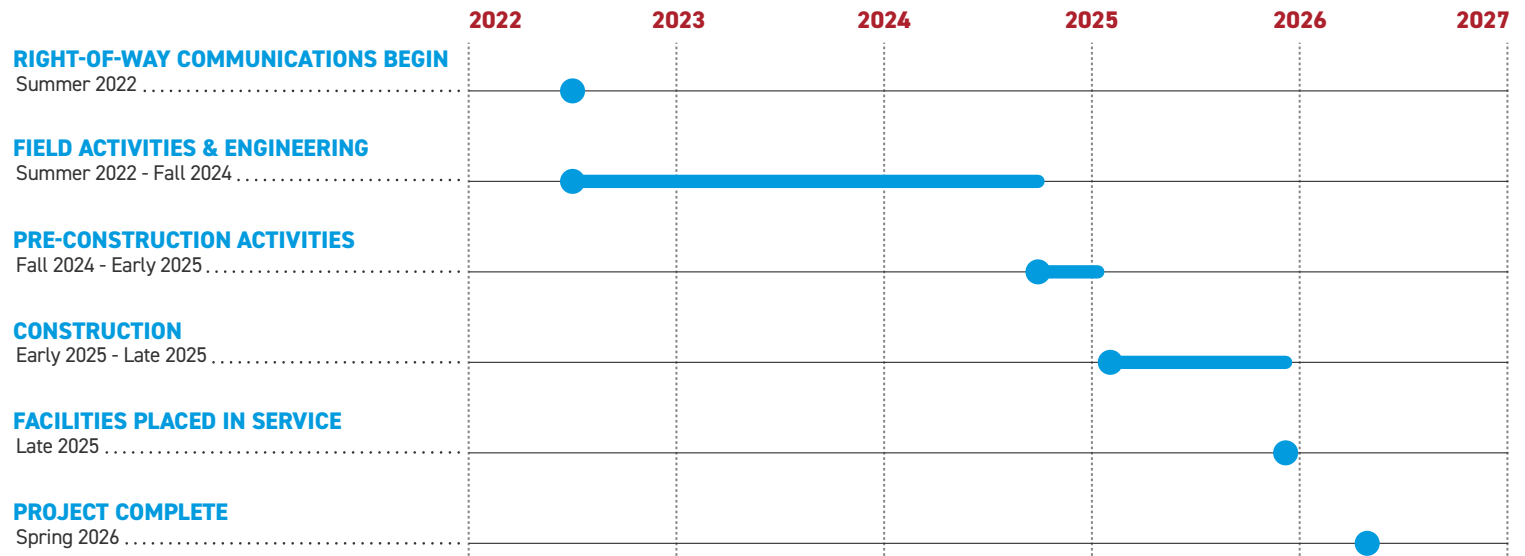
WHY

The project strengthens the electric transmission system by providing an additional power source to customer facilities to help meet the area's growing electrical demand.

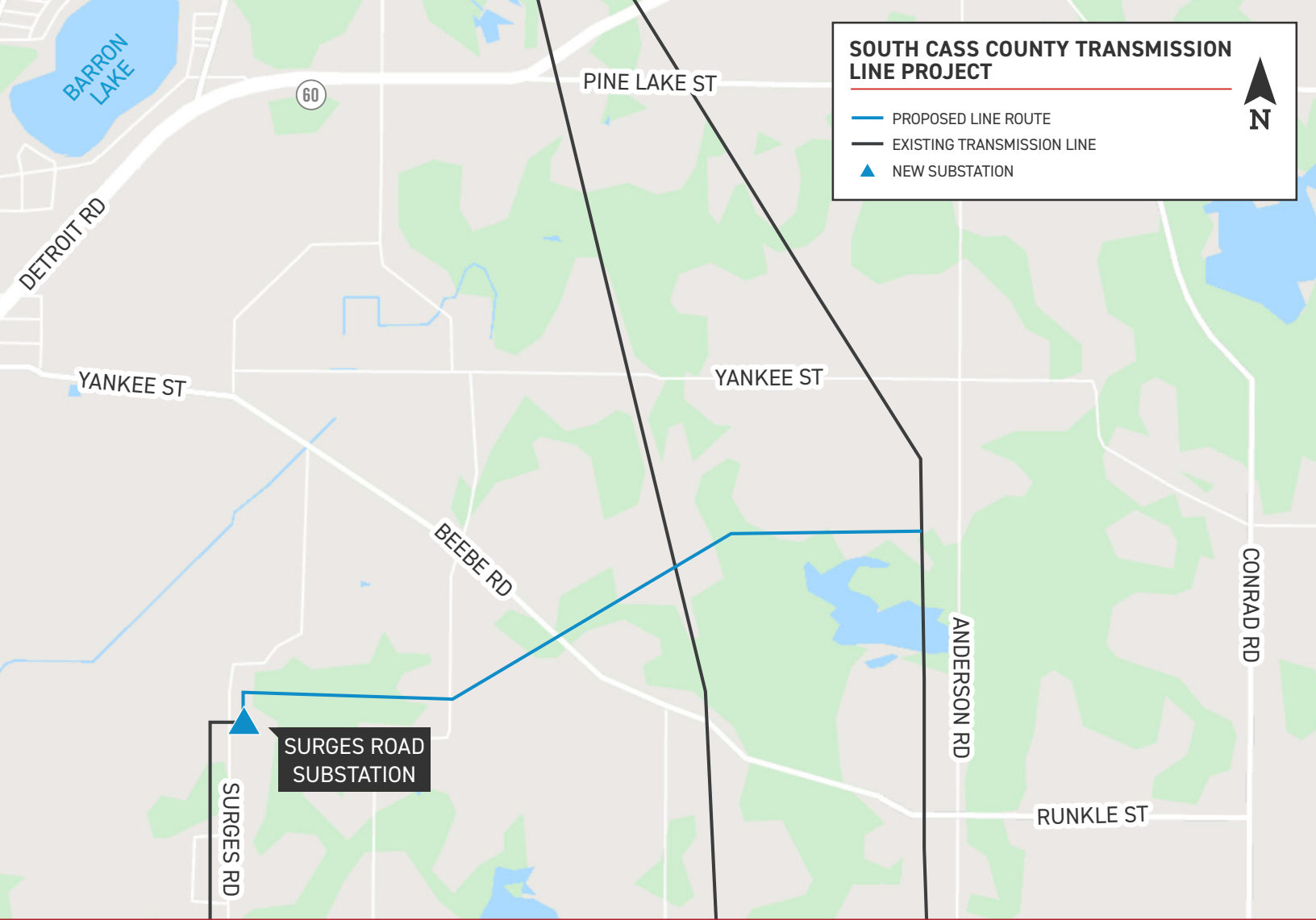
WHERE

The project area includes Howard and Milton townships in Cass County, Michigan.

PROJECT SCHEDULE



*Timeline subject to change.

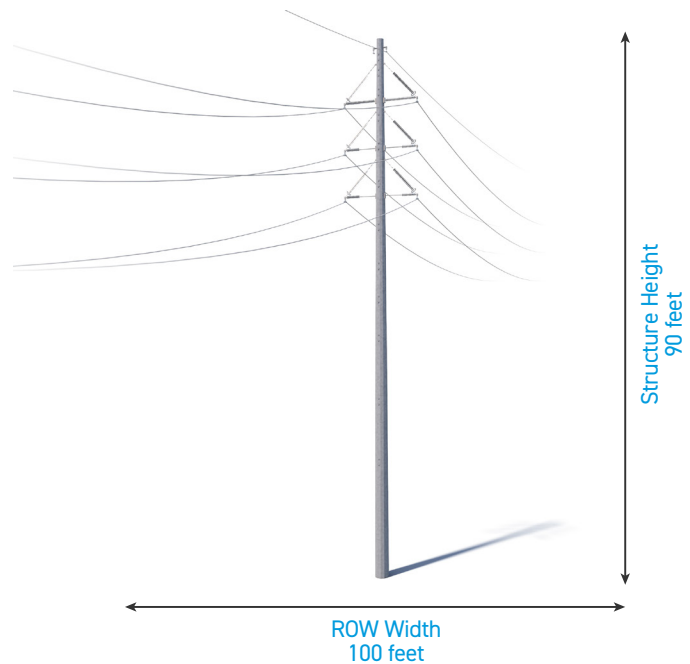


TYPICAL STRUCTURES

The project involves installing steel poles.

Typical Pole Height: [Approximately 90 feet*](#)

Typical Right-of-Way Width: [Approximately 100 feet*](#)



Exact structure, height, and right-of-way requirements may vary.

WE VALUE YOUR INPUT. PLEASE SEND COMMENTS AND QUESTIONS TO:

KIA CLAY · PROJECT OUTREACH SPECIALIST

KCLAY1@AEP.COM · 614-933-2367

INDIANAMICHIGANPOWER.COM/SOUTHCASSCOUNTY

