

WEST TEXARKANA TRANSMISSION IMPROVEMENTS PROJECT

Southwestern Electric Power Company (SWEPCO) officials plan to strengthen the electric grid in the Texarkana region by rebuilding about 7 miles of 69-kilovolt (kV) transmission line.

WHAT

The project involves:

- Rebuilding approximately 7 miles of 69-kV transmission line
- Upgrading substation equipment
- Removing or trimming trees and woody-stemmed vegetation that have grown within SWEPCO's right-of-way

WHY

The transmission line was constructed in 1961 and is past its planned service life. The project:

- Replaces deteriorating wooden poles with modern steel poles
- Strengthens the system against severe weather impacts
- Decreases the likelihood and duration of wide, community-sustained outages

WHERE

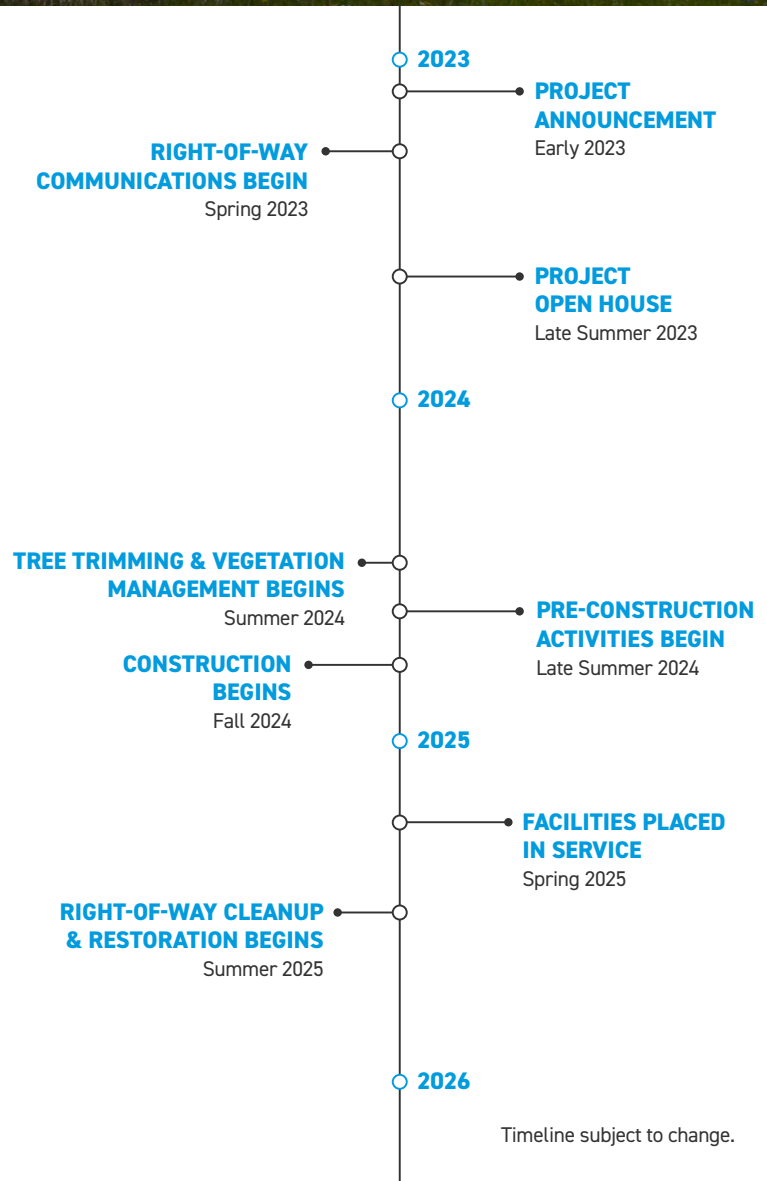
The transmission line rebuild begins at SWEPCO's Bann Substation and extends southeast about 7 miles to where it ends at a SWEPCO substation in southwest Texarkana.

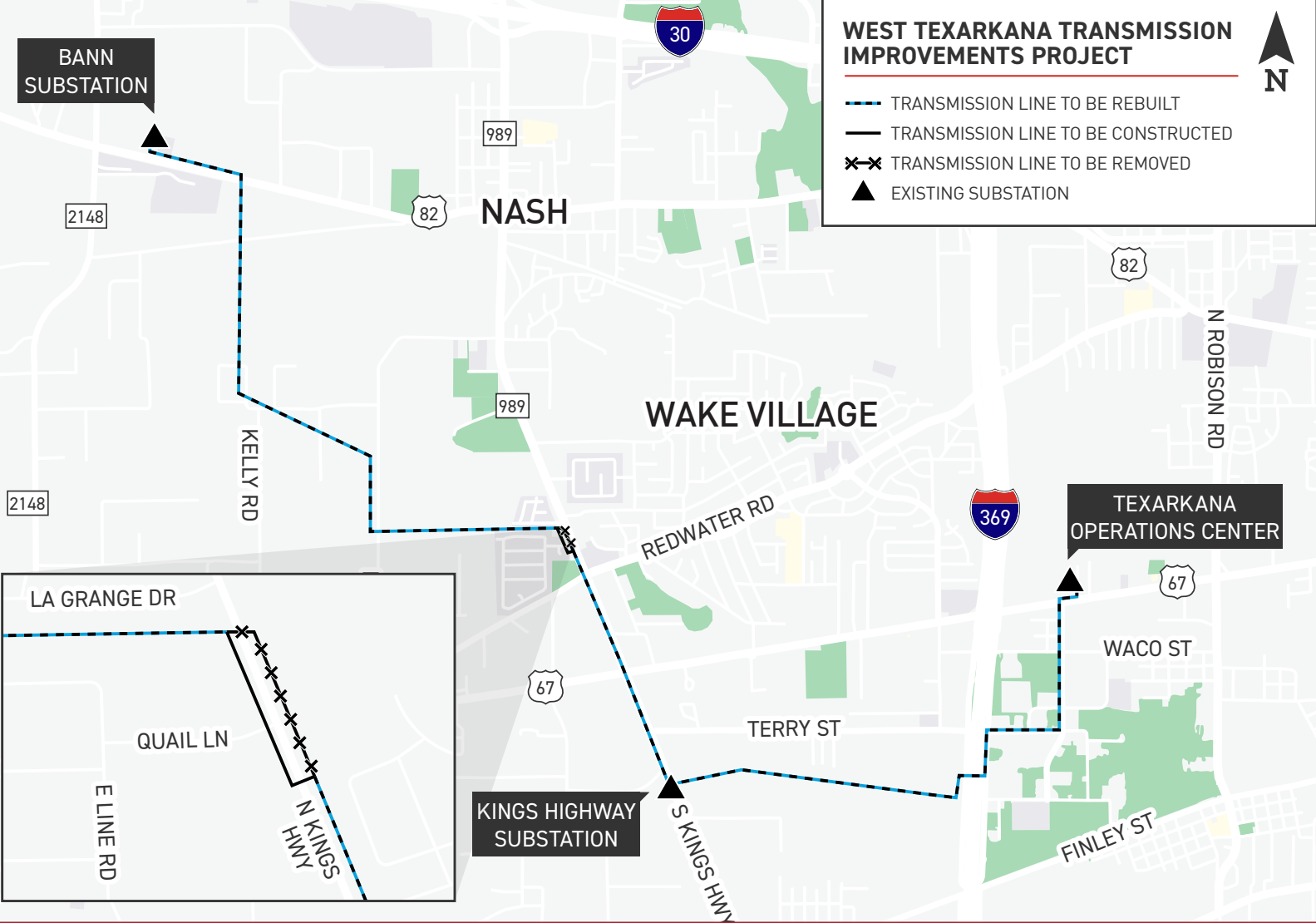
BEFORE CONSTRUCTION:

A right-of-way agent may contact you if SWEPCO needs to acquire new or update existing easements on your property. You will also be contacted should crews need to access your property for survey work or construction.

To safely perform their work, crews may need to:

- Remove vegetation from the right-of-way
- Install temporary gates, fencing and access roads
- Install culverts for water management

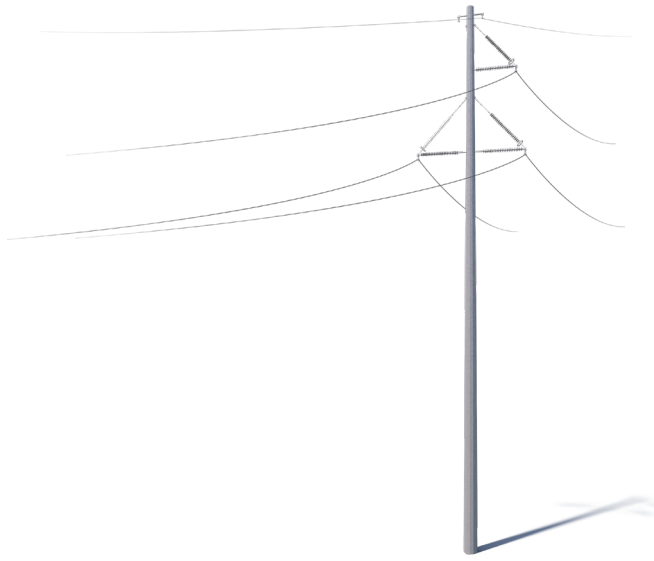




TYPICAL STRUCTURES

SWEPCO crews plan to install single-pole steel structures.

- Typical Height: 85 feet
- Typical Distance Between Structures: 320 feet
- Typical Right-of-Way Width: 60 - 100 feet



*Exact structure, height, and right-of-way requirements may vary.

WE VALUE YOUR INPUT. PLEASE SEND COMMENTS AND QUESTIONS TO:
 MICHAEL HARRIS · PROJECT OUTREACH SPECIALIST
 MHHARRIS@AEP.COM · 918-231-8047
 SWEPCO.COM/WESTTEXARKANA

