

ASHDOWN - 12TH STREET TRANSMISSION LINE REBUILD PROJECT

Southwestern Electric Power Company (SWEPCO) representatives plan to improve the electric transmission system in the Texarkana area. The Ashdown - 12th Street Transmission Line Rebuild Project involves upgrading about 19 miles of transmission line to increase electric reliability and strengthen the local power grid.

WHAT

The project involves:

- Rebuilding the existing Ashdown - 12th Street 69-kilovolt (kV) transmission line between Ashdown and Texarkana, Arkansas
- Upgrading the line's operational capacity from 69 kV to 138 kV
- Making minor upgrades to associated substations
- This project requires SWEPCO representatives to file a Certificate of Environmental Compatibility and Public Need (CECPN) with the Arkansas Public Service Commission (APSC).

WHY

The existing Ashdown - 12th Street transmission line was built in 1969 with wooden poles that have reached the end of their service life.

The project:

- Replaces aging wooden poles with steel poles
- Improves reliability by decreasing the likelihood of large, community-wide power outages
- Strengthens the line against severe weather impacts
- Accommodates growth in the Texarkana, Arkansas, area by providing additional power capacity

WHERE

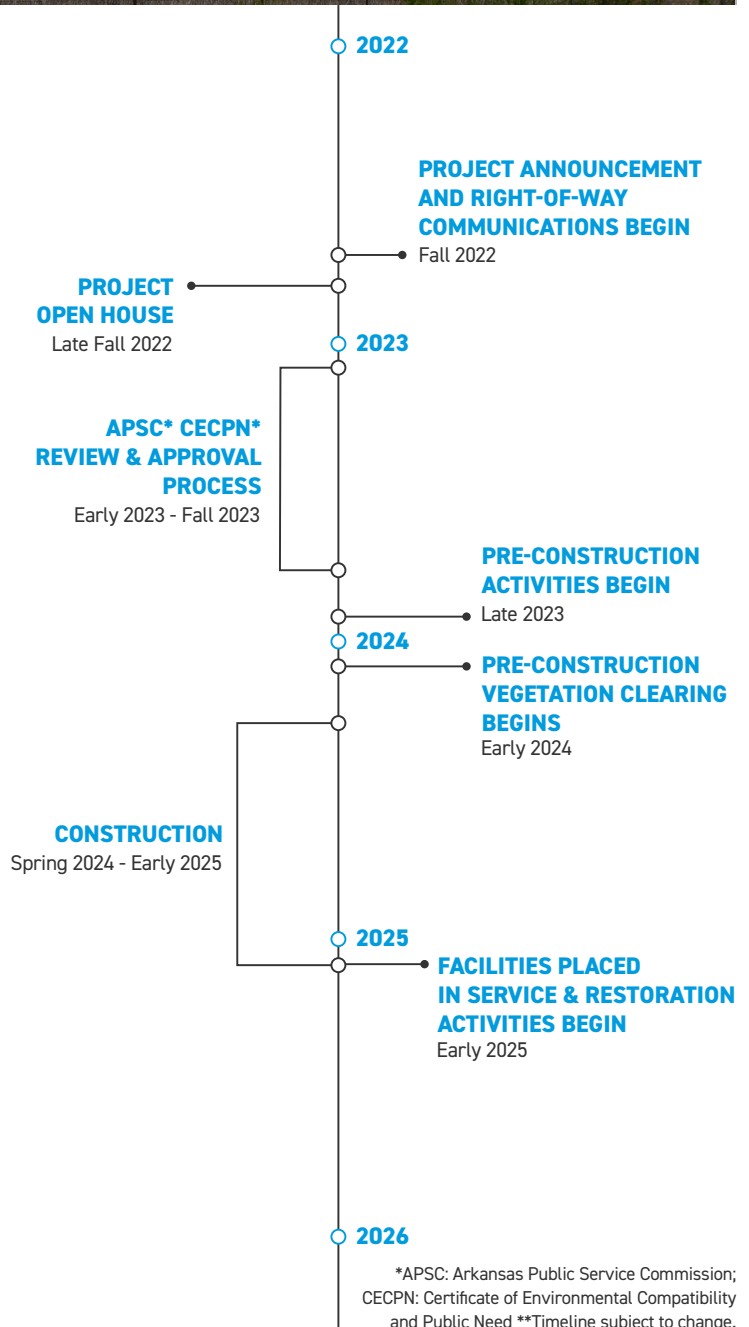
The transmission line stretches approximately 19 miles between the Ashdown Substation, located in Ashdown off Foose Street, to the 12th Street Substation, located in Texarkana, Arkansas, off East 12th Street.

BEFORE CONSTRUCTION

A right-of-way agent may contact you if SWEPCO needs to acquire new or update existing easements on your property. You will also be contacted should crews need to access your property for survey work or construction.

To safely perform their work, crews may need to:

- Remove woody-stemmed vegetation from the right-of-way
- Install temporary gates, fencing and access roads
- Install culverts for water management



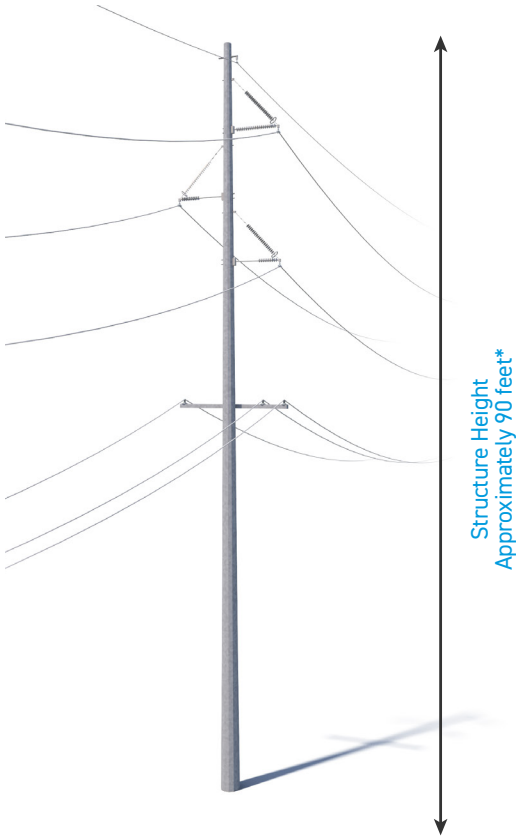
TYPICAL STRUCTURES

SWEPCO engineers plan to use single-pole steel structures.

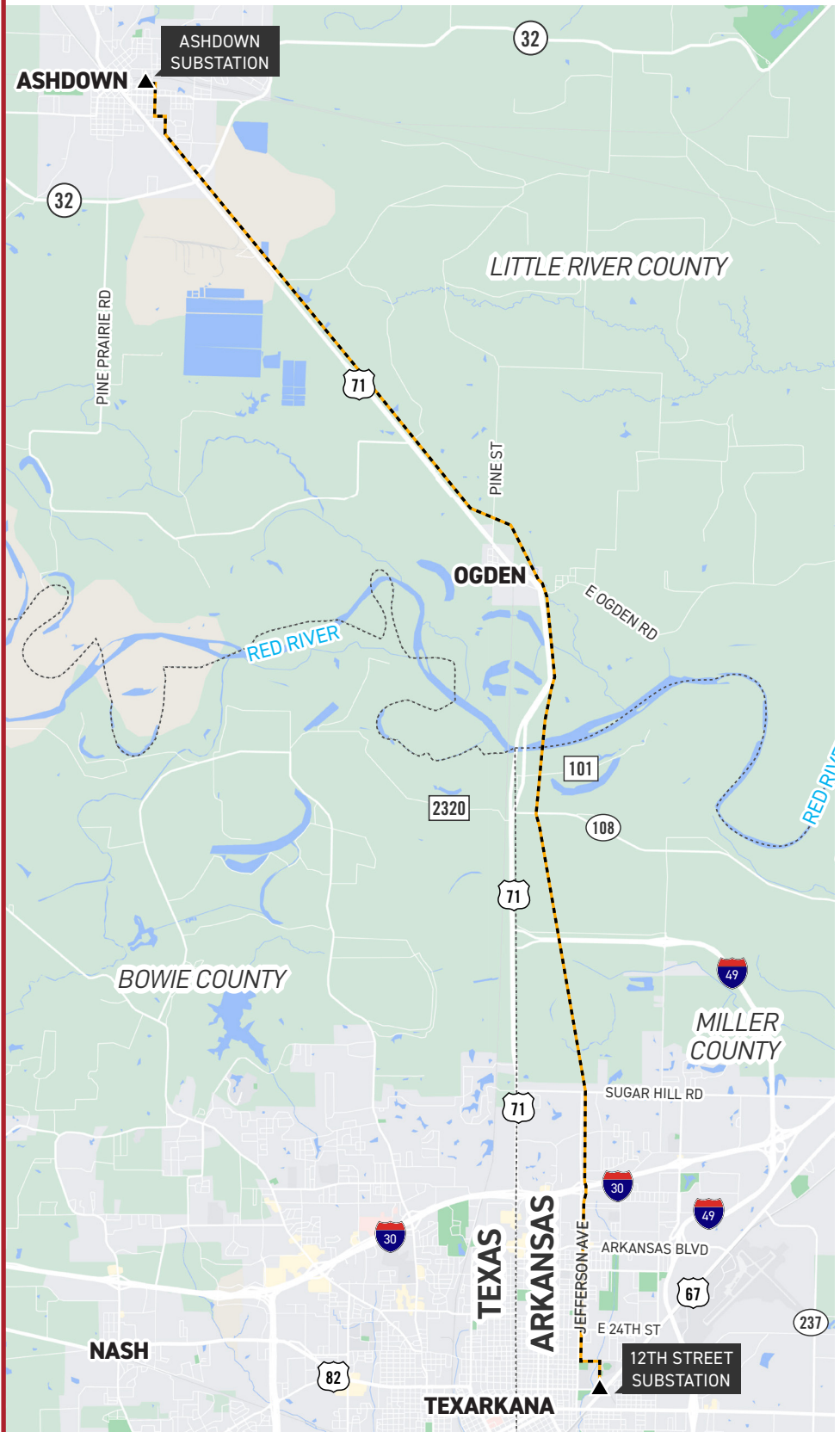
Typical Structure Height: **Approximately 90 feet***

Typical Distance Between Structures:

Approximately 600 feet*



*Exact structure, height, and right-of-way requirements may vary.



ASHDOWN - 12TH STREET TRANSMISSION LINE REBUILD PROJECT

--- TRANSMISSION LINE TO BE REBUILT

▲ EXISTING SUBSTATION



WE VALUE YOUR INPUT. PLEASE SEND COMMENTS AND QUESTIONS TO:

MATTHEW HAMES · PROJECT OUTREACH SPECIALIST

MCHAMES@AEP.COM · 918-237-6736

SWEPCO.COM/ASHDOWN-12STREET

