

# Bottlebrush - Solstice Transmission Line Project

AEP Texas and Texas New Mexico Power (TNMP) plan to strengthen the electrical transmission system in west Texas by constructing a transmission line between Solstice Substation located on the western border of Pecos County to Bottlebrush Substation southeast of Fort Stockton.

## What

The Bottlebrush - Solstice Transmission Line Project involves building about 60 mile of new 345-kilovolt (kV) power line between two substations in Pecos County in partnership with TNMP.

AEP Texas and TNMP representatives plan to file a Certification of Convenience and Necessity (CCN) application with the Public Utility Commission of Texas (PUCT) following a review of public input on route link development and additional route analysis. Project representatives expect to file a CCN application in May 2026. The PUCT determines the final line route.

## Why

As a result of the Texas House Bill 5066, the PUCT directed the Electrical Reliability Council of Texas (ERCOT) to develop a reliability plan for the Permian Basin region.

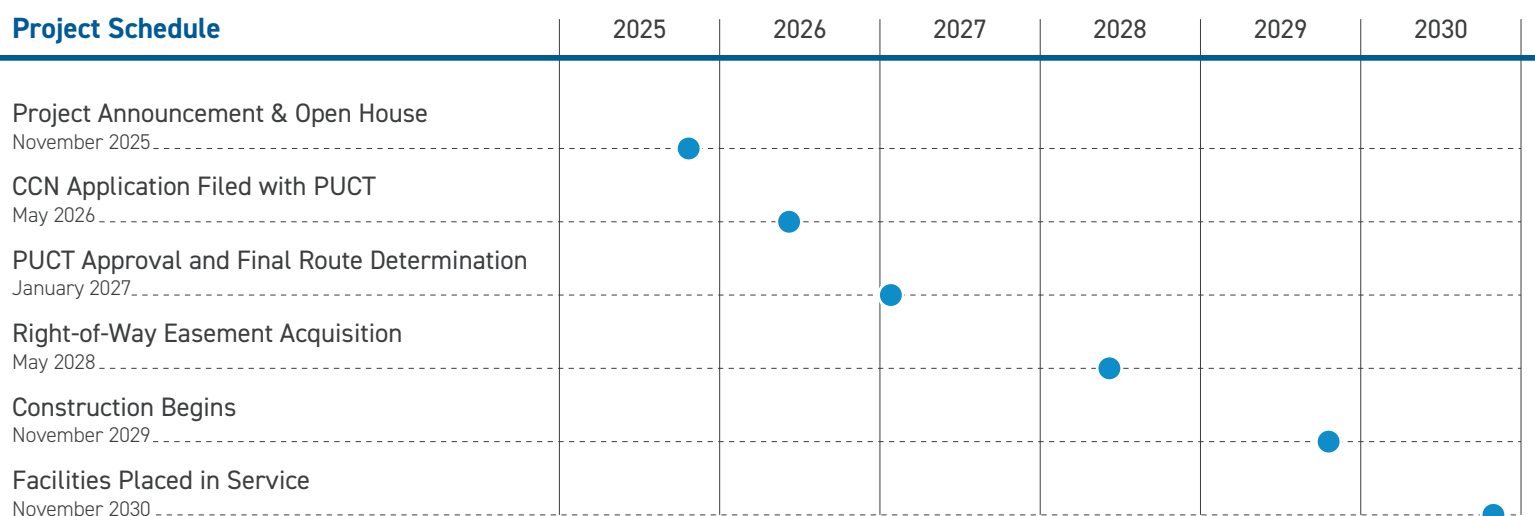
The Bottlebrush - Solstice Transmission Line Project is part of that reliability plan. This line is a local transmission upgrade. It will provide a more reliable and robust network to address the growing energy needs in the Permian Basin region.

## Where

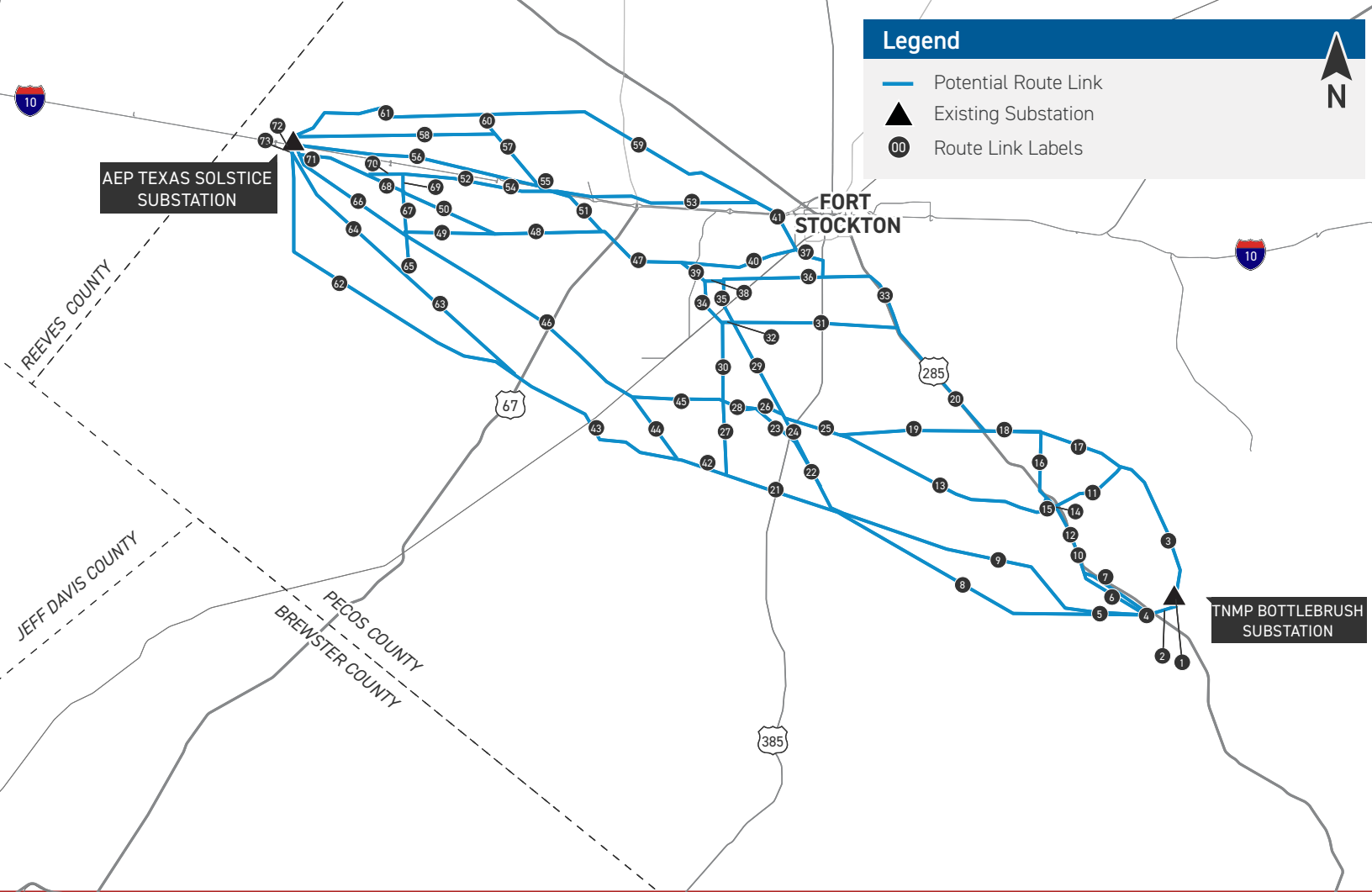
The proposed line stretches between AEP Texas' Solstice Substation located west of Fort Stockton and TNMP's Bottlebrush Substation southeast of Fort Stockton.

AEP Texas will construct, own, and operate the western half of the power line and TNMP will construct, own, and operate the eastern half of the power line.

## Project Schedule



*\*Timeline subject to change.*



## Typical Structures

AEP Texas and TNMP representatives plan to install monopole structures. Some new structures will include AEP's Breakthrough in Overhead Line Design (BOLD) technology, which can operate more efficiently than conventional transmission pole designs.

### Typical Structure Height:

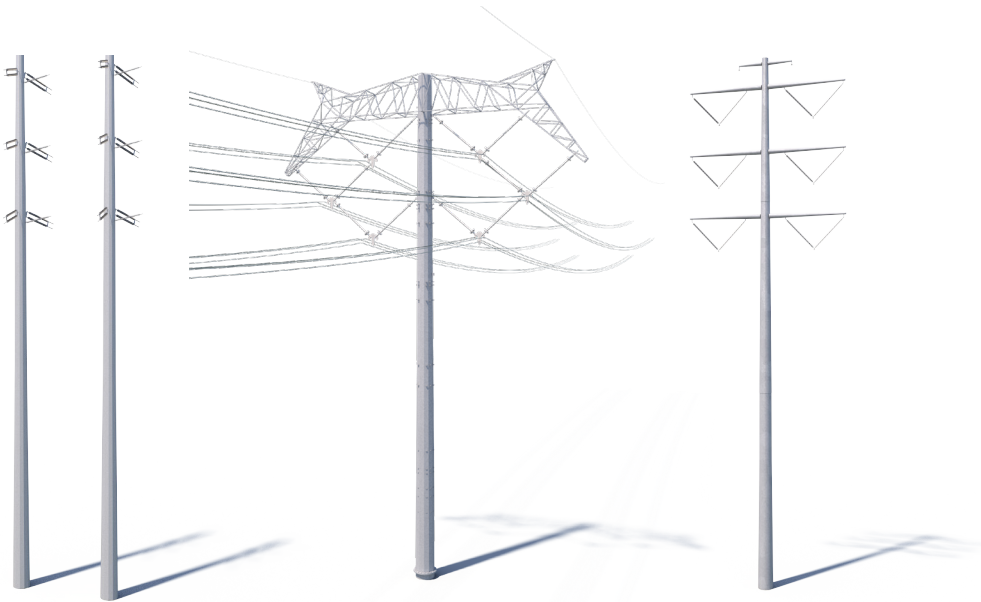
130 feet

### Typical Right-of-Way Width:

150 feet

### Typical Distance Between Structures:

1,200 feet



*\*Exact structure, height and right-of-way requirements may vary*



**We value your input. Please send comments and questions to:**

Michael Harris • Project Outreach Specialist  
AEPTexasOutreach@aep.com • 833-329-4865

[AEPTexas.com/Bottlebrush-Solstice](https://www.aep.com/Bottlebrush-Solstice)

10/13/2025