

# TATUM AREA

## TRANSMISSION IMPROVEMENTS PROJECT

**SOUTHWESTERN  
ELECTRIC POWER  
COMPANY**

An AEP Company

Southwestern Electric Power Company (SWEPCO) representatives plan to upgrade the electric transmission system in the Tatum area. Crews plan to begin construction in spring 2023 and conclude in fall 2024.

### WHAT

The project involves:

- Rebuilding approximately 7 miles of 138-kilovolt power line between the Knox Lee Substation, located near Lake Cherokee, and the Rock Hill Substation, located off FM Road 1794
- Replacing 3 additional miles of wire on existing poles
- Making minor upgrades to substation equipment

### WHY

Project benefits:

- Replaces deteriorating wooden poles from the 1950s with modern steel poles to reduce maintenance frequency and strengthen the line against weather impacts
- Upgrades the local power grid to ensure continued electric reliability for customers
- Upgrades substation equipment to decrease the likelihood of larger, community-sustained outages

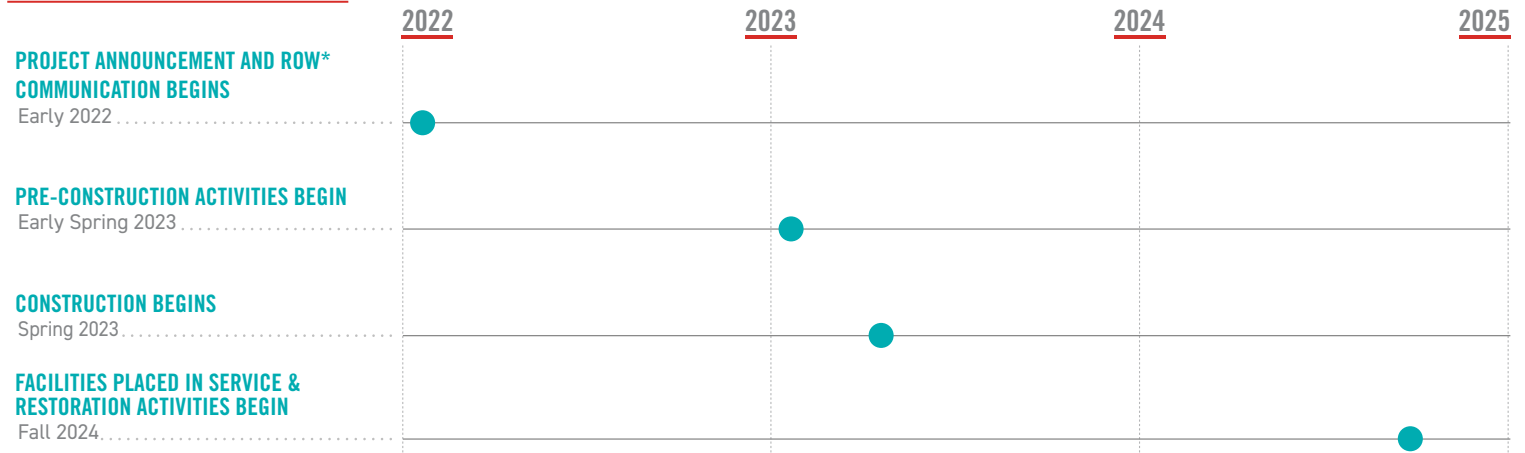
### WHERE

The project area includes:

- City of Tatum
- City of Easton
- Gregg County
- Rusk County
- Panola County

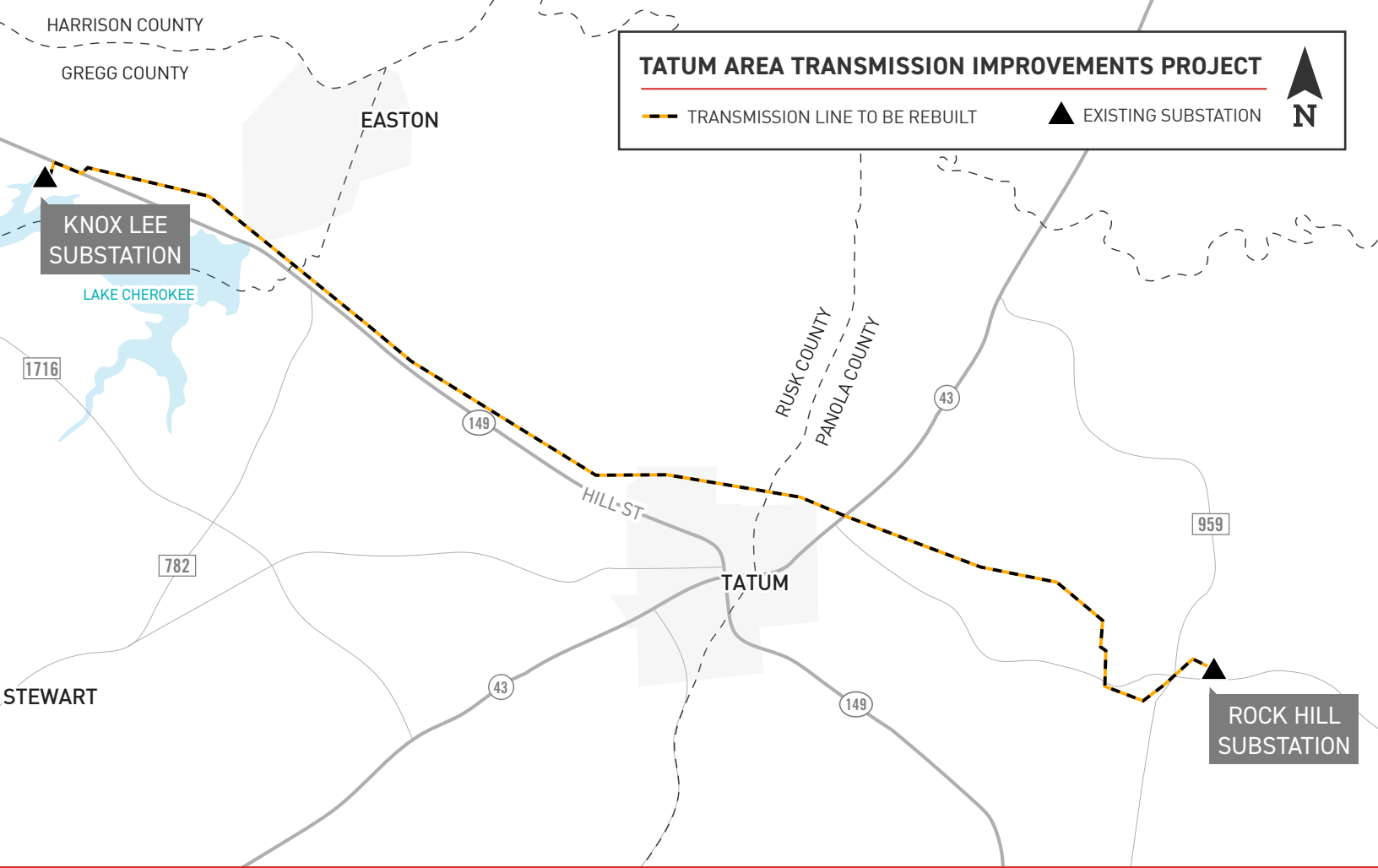


### PROJECT SCHEDULE



\*ROW: Right-of-Way

\*\*Timeline subject to change.



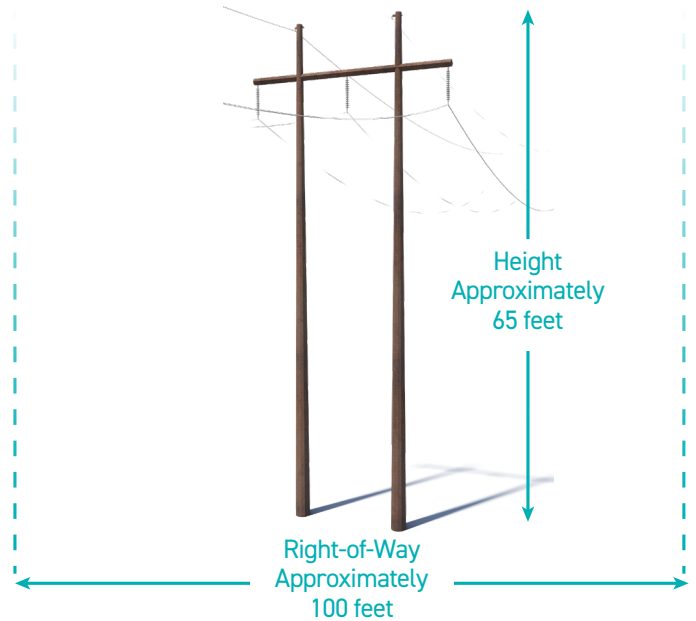
## TYPICAL STRUCTURES

SWEPCO plans to use weathering steel h-frame structures for this project.

Typical Structure Height: **Approximately 65 feet**

Typical Distance Between Structures: **Approximately 650 feet**

Typical Right-of-Way Width: **Approximately 100 feet**



\*Exact structure, height and right-of-way requirements may vary

**SWEPCO VALUES YOUR INPUT ABOUT THIS PROJECT. PLEASE SEND COMMENTS AND QUESTIONS TO:**

### MATTHEW HAMES

Project Outreach Specialist

(918) 237-6736

mchames@aep.com

[SWEPCO.com/TatumArea](https://www.swepc.com/TatumArea)

