



Oso Creek - Westside Transmission Improvements Project

AEP Texas representatives plan to build a new 138-kilovolt (kV) Oso Creek - Westside electrical transmission line in Corpus Christi.

What

The project involves constructing approximately 6 miles of 138-kV double circuit transmission line between the future Oso Creek Substation and existing Westside Substation.

AEP Texas officials plan to apply for a Certificate of Convenience and Necessity (CCN) with the Public Utility Commission of Texas (PUC) following a review of public input on route link development and additional route analysis. Project representatives expect to file a CCN application by Fall 2026. The final route will be determined by the PUC.

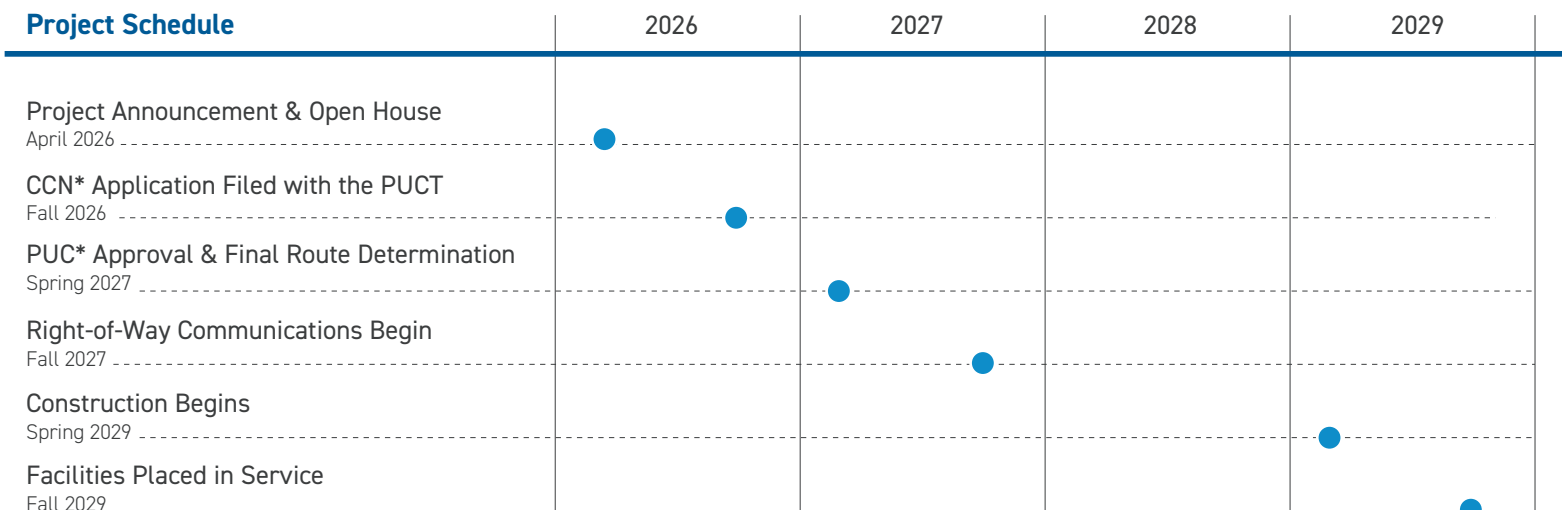
Why

The proposed project improves regional reliability and resiliency with the addition of a new 138-kV transmission line and modernizes the electric system to allow more flexibility to address the area's growing power demand and ensures reliable power, reducing the likelihood and duration of outages for area customers.

Where

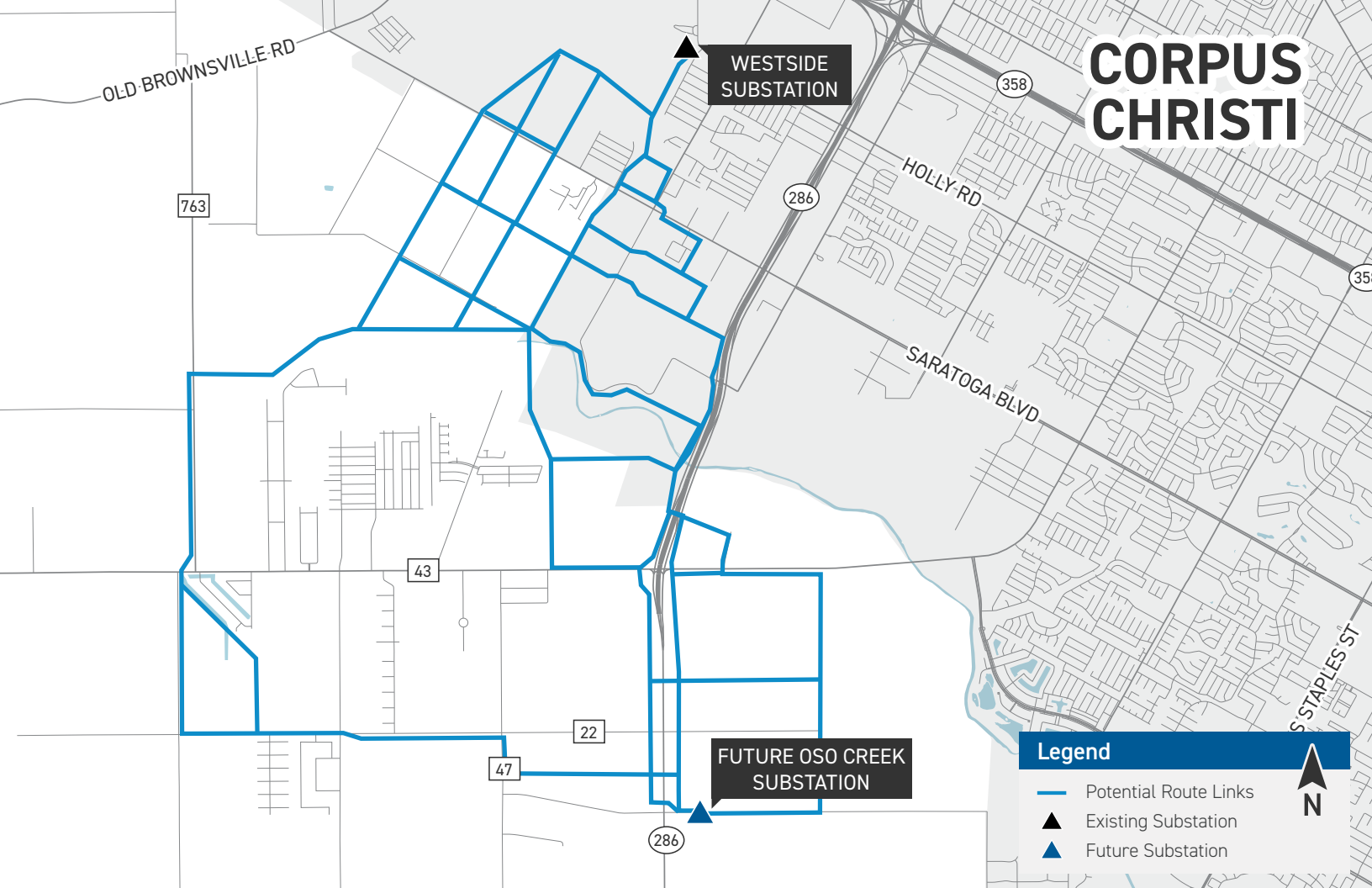
The project area includes the City of Corpus Christi in Nueces County.

Project Schedule



*PUCT: Public Utility Commission of Texas

**Timeline subject to change.

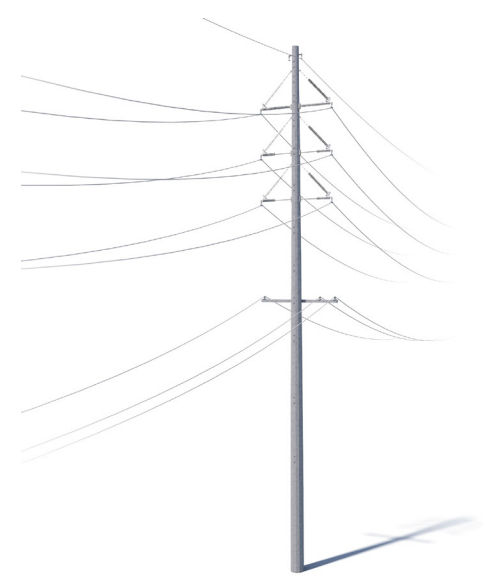


Legend

- Potential Route Links
- ▲ Existing Substation
- ▲ Future Substation

Typical Structures

- Typical Structure Height: Approximately 100 feet*
- Typical Distance Between Structures: 350 - 400 feet*
- Typical Right-of-Way Width: Approximately 100 feet*



*Exact structure, height, and right-of-way requirements may vary.



We value your input. Please send comments and questions to:

Kimberly Perez • Project Outreach Specialist
AEPTexasOutreach@aep.com • 833-329-4865

AEPTexas.com/OsoCreek-Westside