

DUPONT - JOSLIN TRANSMISSION LINE REBUILD PROJECT

AEP Texas representatives plan to rebuild approximately 33 miles of the Dupont - Joslin 138 - kilovolt (kV) line in Victoria and Calhoun counties. Crews plan to begin construction early 2026 and conclude summer 2027.

CONSTRUCTION FAQ

PROJECT COMPONENTS & BENEFITS

Project benefits include:

- Replacing wooden structures from 1966 with modern steel structures.
- Improving area reliability by reducing the frequency and duration of outages.
- Enhancing the lines operational performance and requiring less frequent maintenance.

TRAFFIC CONTROL

AEP Texas representatives work to ensure public safety and minimize inconveniences during construction.

Crews plan to:

- Close road lanes as needed
- Use flaggers and signs to aid traffic flow on streets during the day
- Open road lanes at night if safety allows

PUBLIC SAFETY TIPS

- Keep your distance from construction workers and equipment
- Stay outside of temporary safety barriers
- Be aware of uneven or slippery surfaces
- Slow down when driving in the area and make sure your headlights are on
- Watch for posted signs
- Watch for road closures and traffic detours
- Follow flaggers' instructions

WHAT TO EXPECT DURING CONSTRUCTION

Construction Corridor Development: September 2026

Crews prepare for construction by:

Crews mark utilities and structure locations along the power line route. Crews also:

- Trim or remove trees and other woody-stemmed vegetation that might interfere with the transmission lines
- Request that you remove or relocate non-habitable structures (including sheds) that have been placed within the right-of-way
- Install temporary fences at select areas along the line for the public's safety
- Remove parts of sidewalks around structure locations

Pole Installation

Crews place pole sections along the right-of-way corridor prior to pole installations. At most pole locations crews:

- Drill angle structure foundations
- Assemble the new structure and place it near the installation area
- Remove existing wire and other equipment from the existing poles
- Remove the existing poles
- Install and stabilize the base of the new structure
- Install and secure the new structure
- Install new wires on new structures

Schedule:

Dupont - Chocolate Bayou: September 2026

Chocolate Bayou - Gohlke: October 2026

Gohlke - Joslin: November 2026

Facilities Placed In-Service

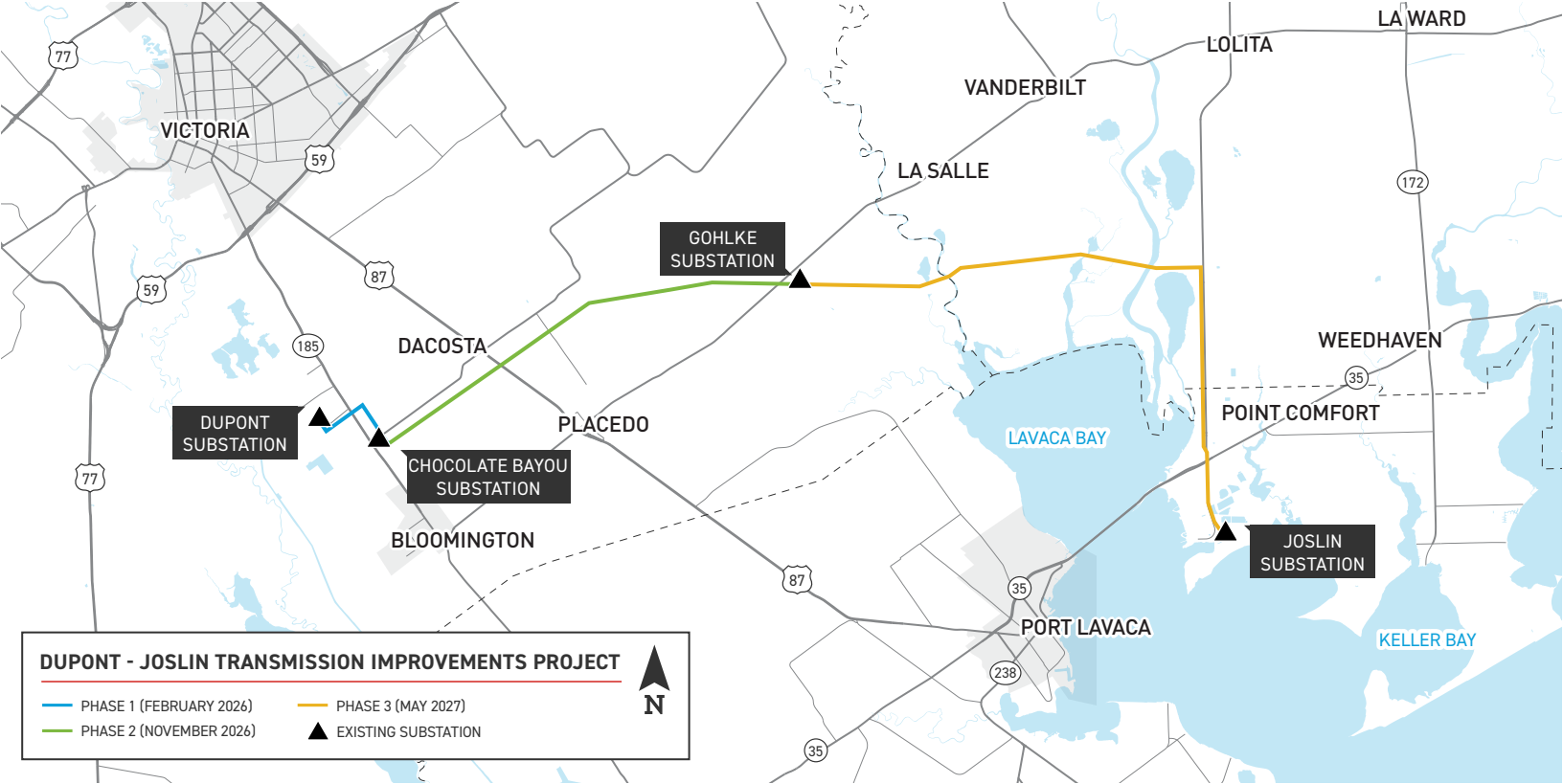
Crews place new facilities in service after finishing structure and wire installations and removing remaining old poles and wires.

- Dupont - Chocolate Bayou: February 2027
- Chocolate Bayou - Gohlke: November 2027
- Gohlke - Joslin: November 2027

*Schedule subject to change based on weather or other factors.

Post Construction & Site Restoration: January 2028

AEP Texas crews follow construction crews throughout the project to restore fences, sidewalks and other neighborhood properties as close to their pre-construction condition as possible. Right-of-way agents also work with landowners to address any other property damages.



DUPONT - JOSLIN TRANSMISSION IMPROVEMENTS PROJECT

— PHASE 1 (FEBRUARY 2026) — PHASE 3 (MAY 2027)
— PHASE 2 (NOVEMBER 2026) ▲ EXISTING SUBSTATION

▲ N

TYPICAL STRUCTURES

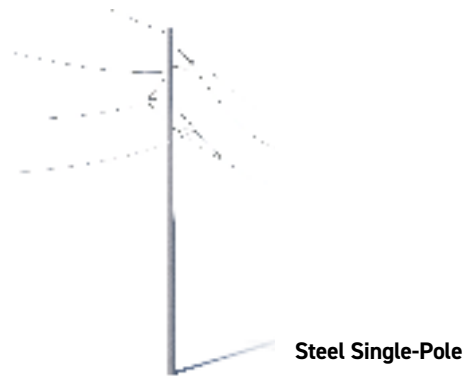
AEP Texas crews plan to install single circuit steel poles on this project.

Typical Structure Height: Approximately 110 feet*

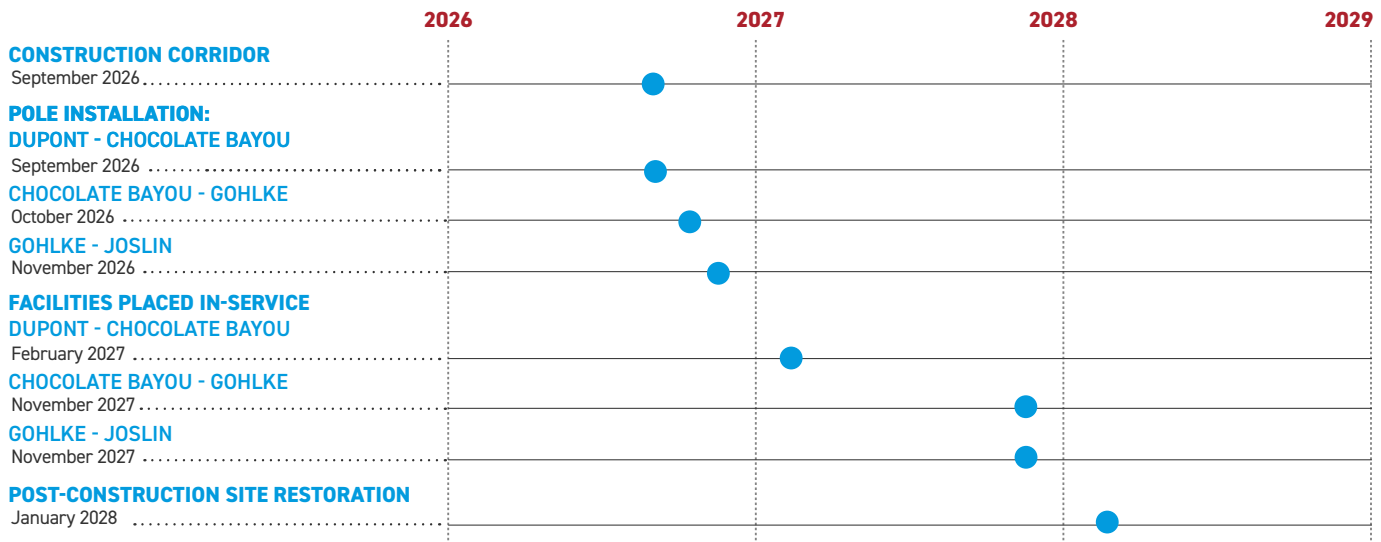
Typical Distance Between Structures: Approximately 600 feet*

Typical Right-of-Way Width: Approximately 75 feet*

*Exact structure, height, and right-of-way requirements may vary.



PROJECT SCHEDULE



WE VALUE YOUR INPUT. PLEASE SEND COMMENTS AND QUESTIONS TO:
 KIMBERLY PEREZ · PROJECT OUTREACH SPECIALIST
 AEPTexasOUTREACH@AEP.COM · 833-329-4865 · AEPTEXAS.COM/DUPONT-JOSLIN

