

Northeast Oklahoma Transmission Enhancement Project – West (NEOTEP West)

AEP Oklahoma Transmission Company, Inc. (OK Transco) representatives plan to expand the electric transmission system in northeast Oklahoma as part of a regional reliability effort.

What

The 100 mile transmission line corridor will be divided into two separate projects, covering the eastern and western portions of the project area.

Why

The Southwest Power Pool (SPP), the regional transmission operator who oversees and monitors the power grid across 17 states, mandated this project as a regional effort to expand the transmission system and enhance reliability in Oklahoma, Kansas and Missouri.

The improvements:

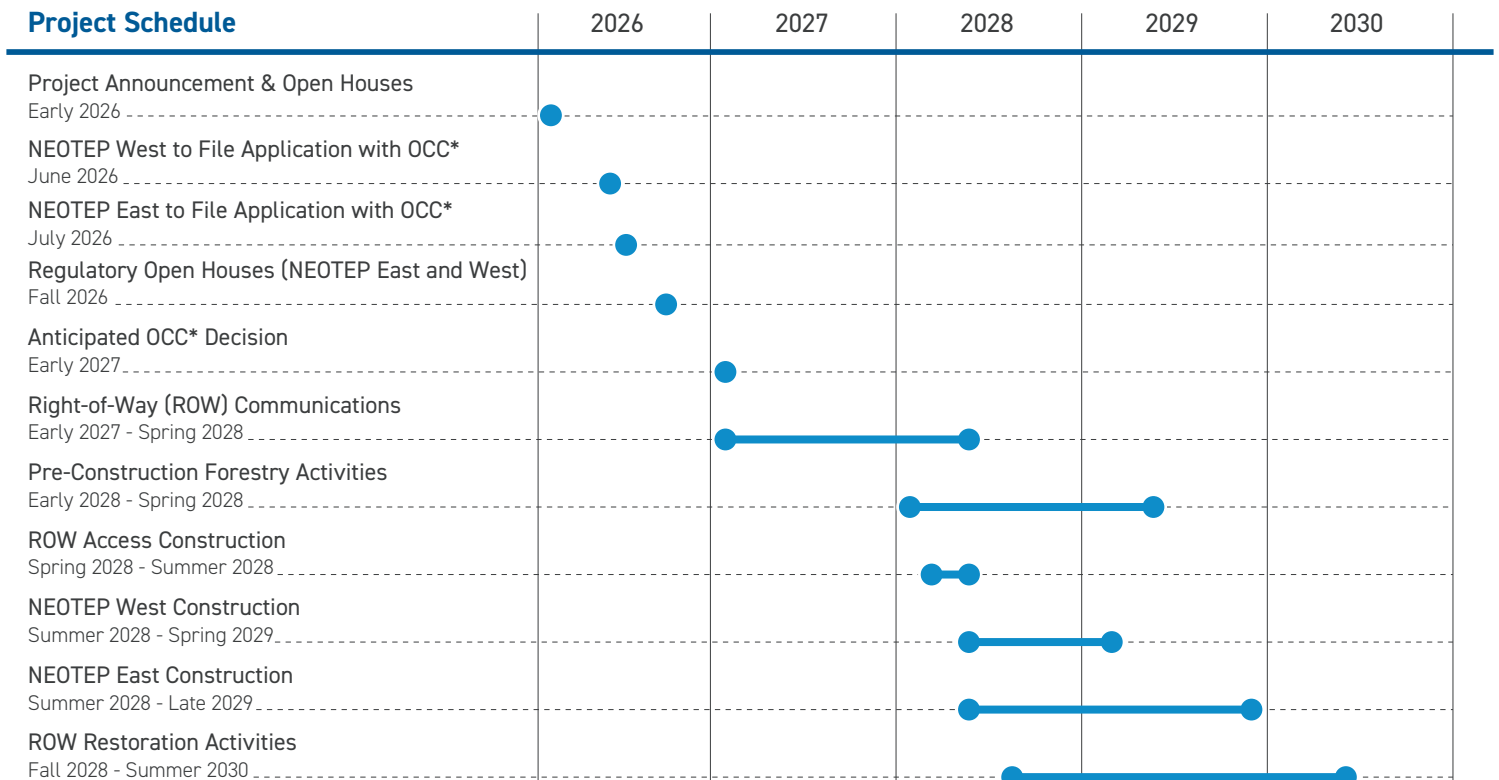
- Enhance electric service reliability and quality.
- Reduce the frequency and duration of power outages.
- Improve ability to deliver power during extreme weather events.
- Optimize operations and lower the cost to deliver power across the region.
- Improve the transmission of low-cost energy to eastern areas of the SPP footprint, including northeast Oklahoma.

Where

The NEOTEP West project area includes Nowata and Washington Counties.

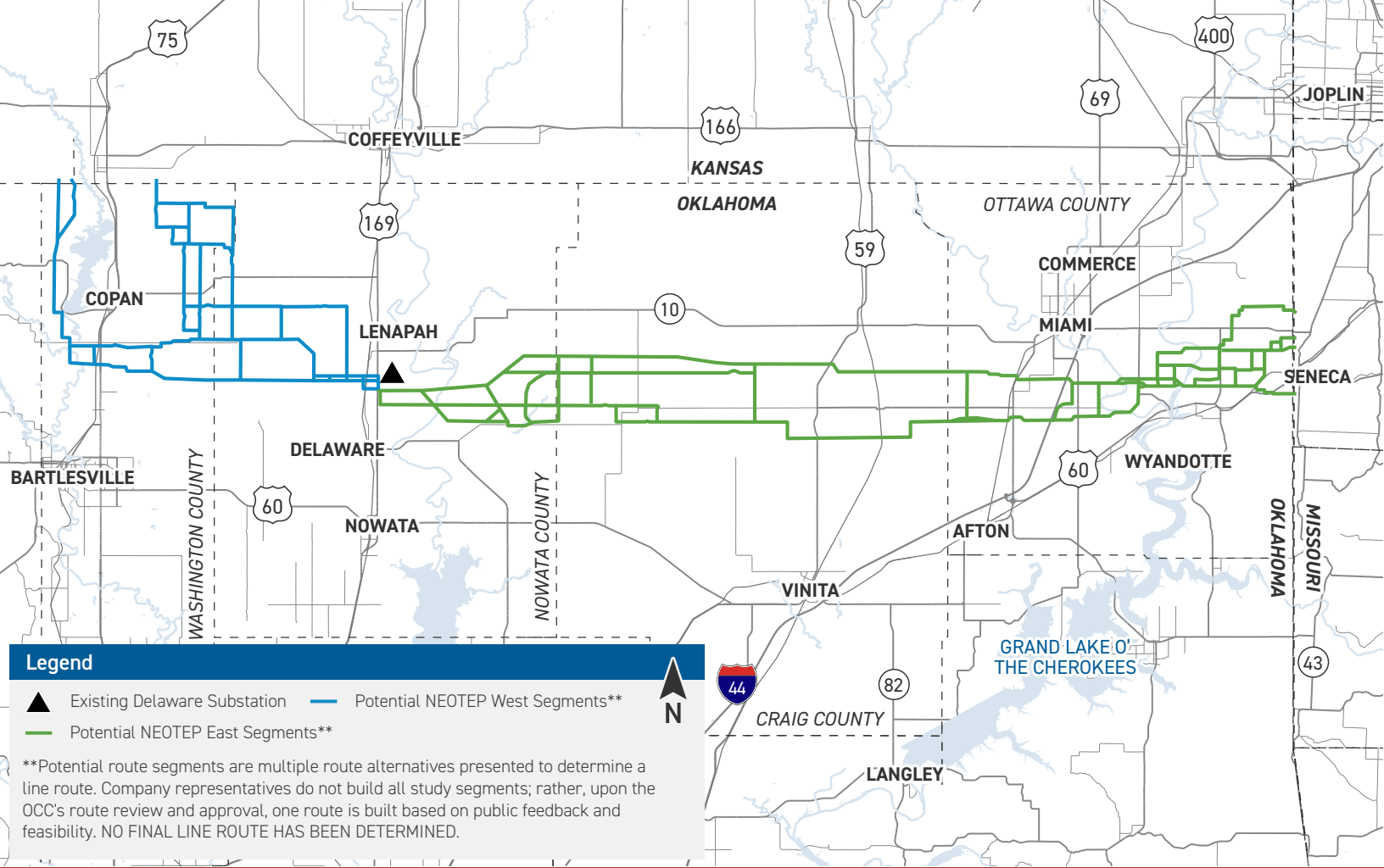
- NEOTEP West involves building approximately 34 miles of 345-kV transmission line from the Delaware Substation in central Nowata County to a point near the Oklahoma-Kansas border.

Project Schedule



*Oklahoma Corporation Commission.

Timeline subject to change.

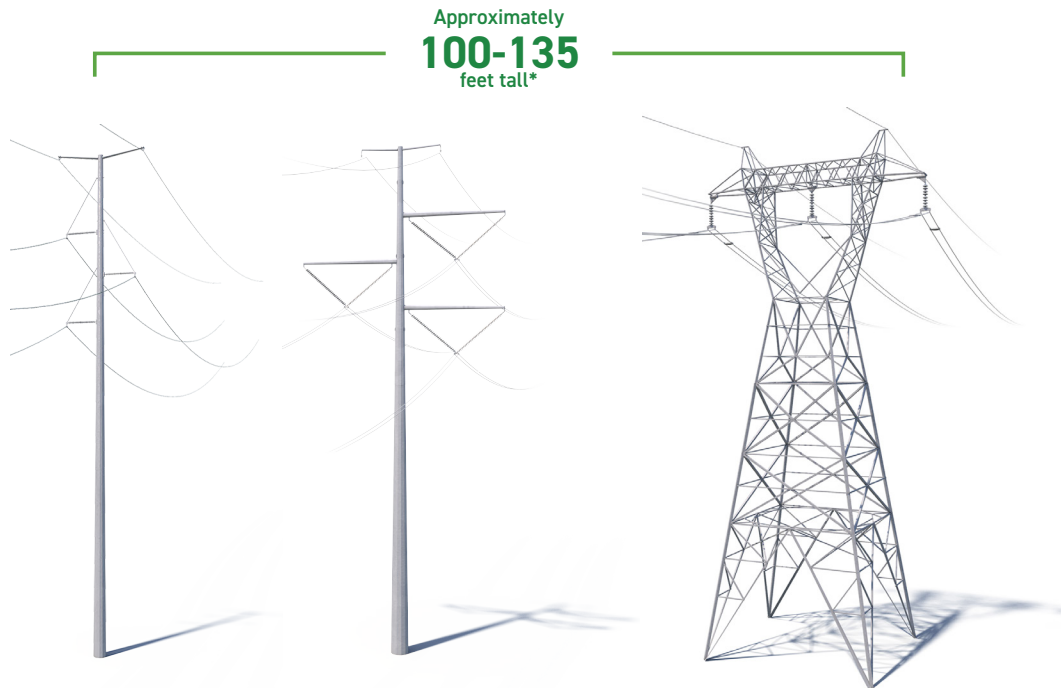


Typical Structures

OK Transco representatives are considering single steel poles or steel lattice towers as the primary structures on this project.

- Typical Structure Height: Approximately 100 - 135 feet*
- Typical Right-of-Way Width: 150 feet*
- Typical Distance Between Structures: Approximately 850 - 1300 feet*

**Exact structure configuration, height and right-of-way requirements may vary.*



We value your input. Please send comments and questions to:

Erika Rivera • Project Outreach Specialist
 pso_outreach@aeptransmission.com • (833) 214-4653

PSOklahoma.com/NEOTEP

Northeast Oklahoma Transmission Enhancement Project – East (NEOTEP East)

AEP Oklahoma Transmission Company, Inc. (OK Transco) representatives plan to expand the electric transmission system in northeast Oklahoma as part of a regional reliability effort.

What

The 100 mile transmission line corridor will be divided into two separate projects, covering the eastern and western portions of the project area.

Why

The Southwest Power Pool (SPP), the regional transmission operator who oversees and monitors the power grid across 17 states, mandated this project as a regional effort to expand the transmission system and enhance reliability in Oklahoma, Kansas and Missouri.

The improvements:

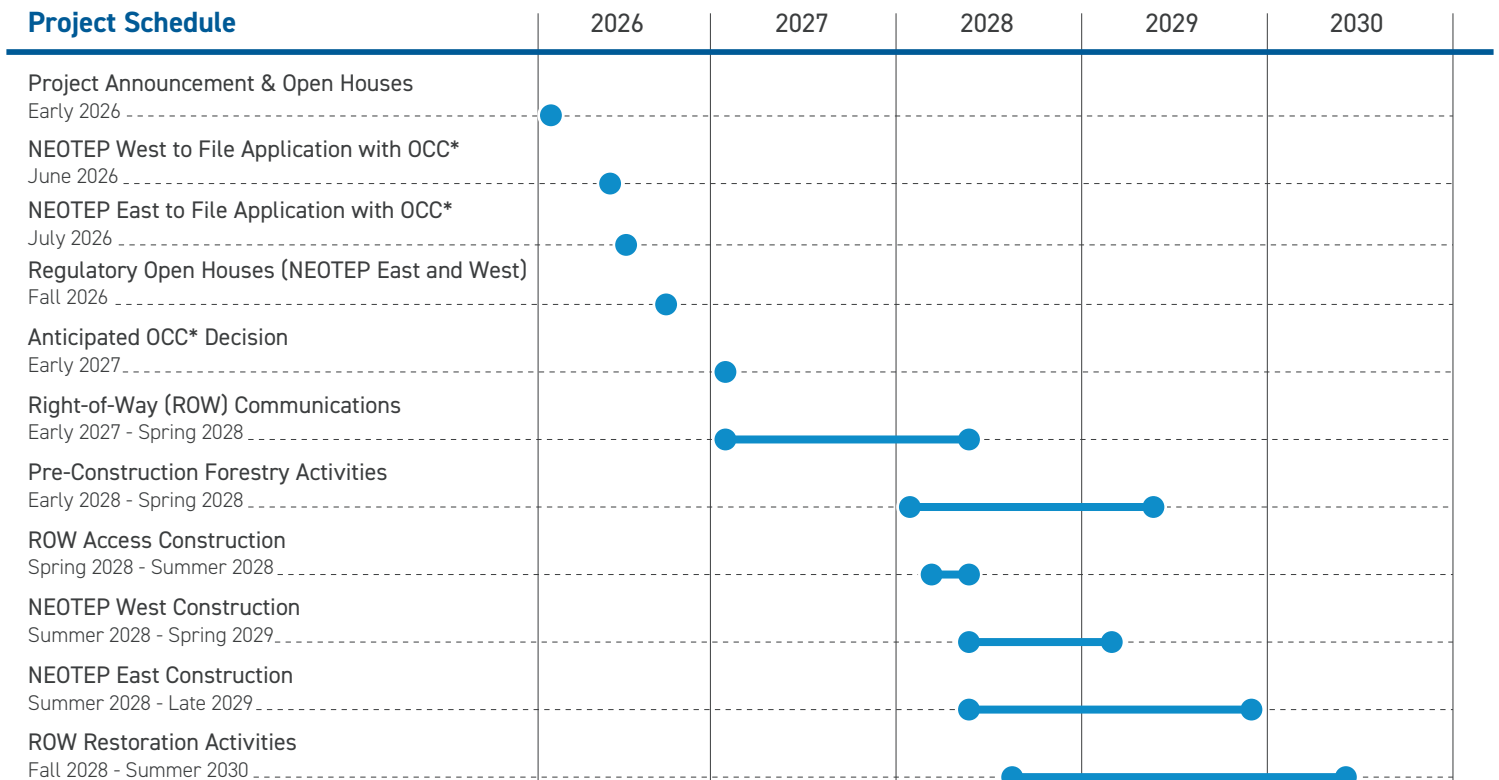
- Enhance electric service reliability and quality.
- Reduce the frequency and duration of power outages.
- Improve ability to deliver power during extreme weather events.
- Optimize operations and lower the cost to deliver power across the region.
- Improve the transmission of low-cost energy to eastern areas of the SPP footprint, including northeast Oklahoma.

Where

The NEOTEP East project area includes Nowata, Craig and Ottawa Counties.

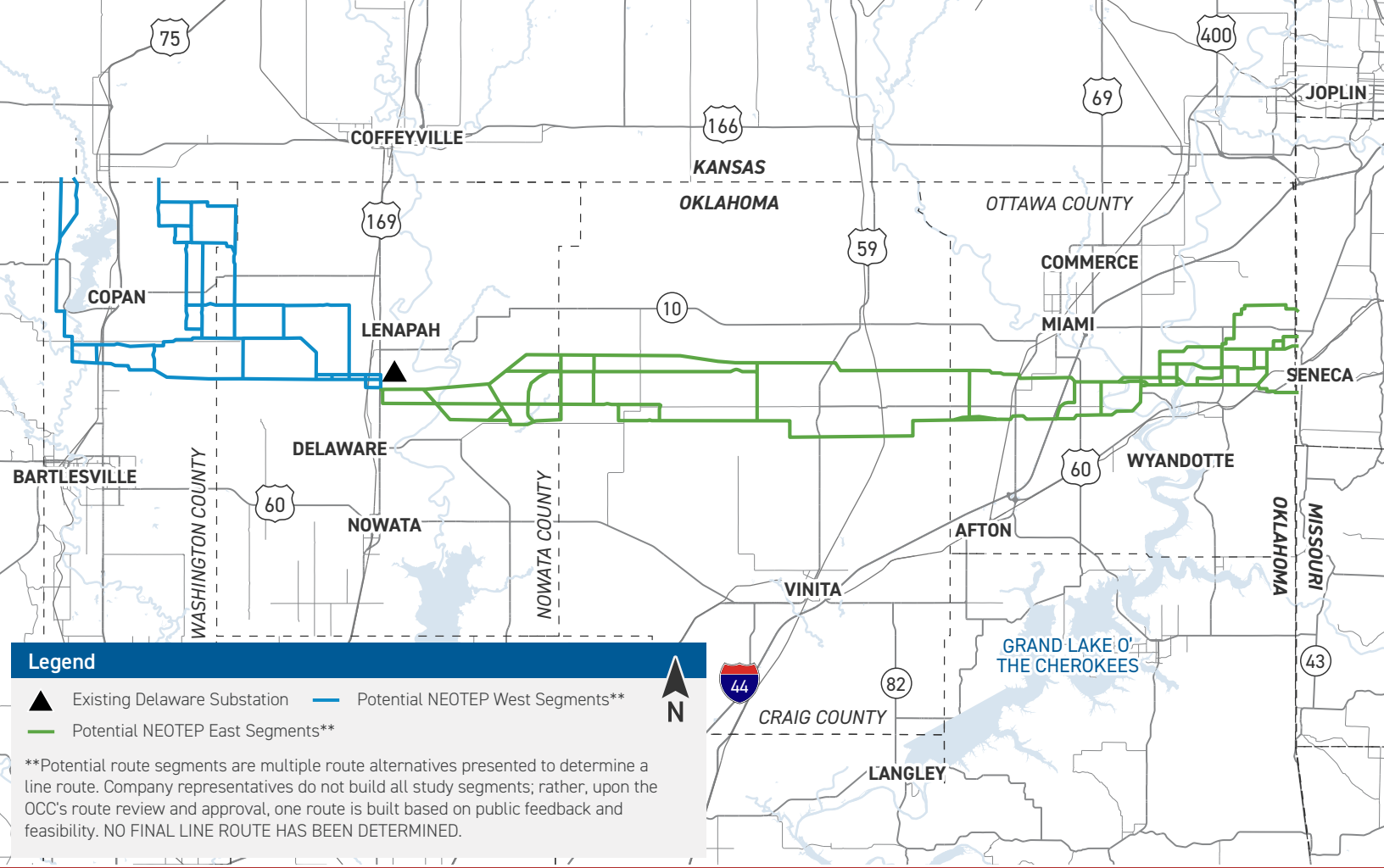
- NEOTEP East involves building 68 miles of 345-kV transmission line from the Delaware Substation to a point near the Oklahoma-Missouri border.

Project Schedule



*Oklahoma Corporation Commission.

Timeline subject to change.

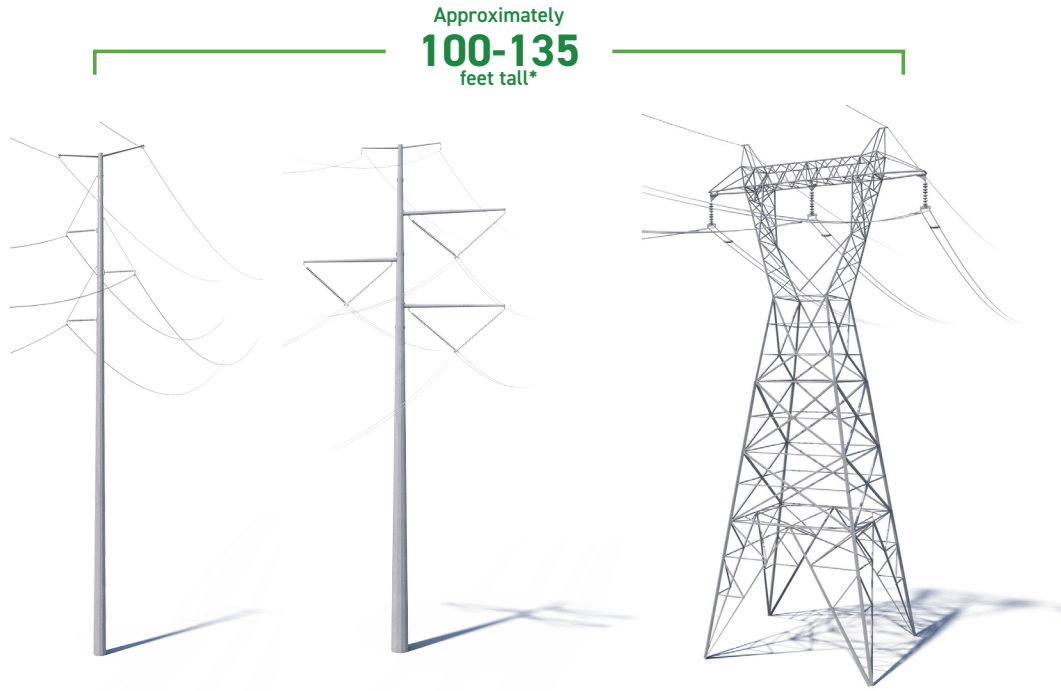


Typical Structures

OK Transco representatives are considering single steel poles or steel lattice towers as the primary structures on this project.

- Typical Structure Height: Approximately 100 - 135 feet*
- Typical Right-of-Way Width: 150 feet*
- Typical Distance Between Structures: Approximately 850 - 1300 feet*

*Exact structure configuration, height and right-of-way requirements may vary.



We value your input. Please send comments and questions to:

Erika Rivera • Project Outreach Specialist
 pso_outreach@aeptransmission.com • (833) 214-4653

PSOklahoma.com/NEOTEP