

Conesville-Bixby 345kV Transmission Line Rebuild Project

AEP Ohio representatives plan power grid upgrades in Fairfield, Licking, Muskingum and Coshocton counties. The project involves rebuilding 41 miles of 345-kilovolt (kV) power line by replacing wooden poles with steel H-frame structures.

What

The project involves rebuilding 41 miles of 345-kV transmission line between the Conesville Substation, located off County Road 273 near the Muskingum River in Coshocton County, and the Bixby Substation, located near the intersection of Palmer Road Northwest and Smoke Road Southwest in Licking County.

*This project requires a regulatory filing with the Ohio Power Siting Board (OPSB).

Why

The project:

- Replaces aging and deteriorating wooden structures from the 1970s with modern steel poles.
- Strengthens safety and service reliability for customers.
- Reduces the likelihood of power outages and improves restoration time if an outage does occur.

Where

The project area includes:

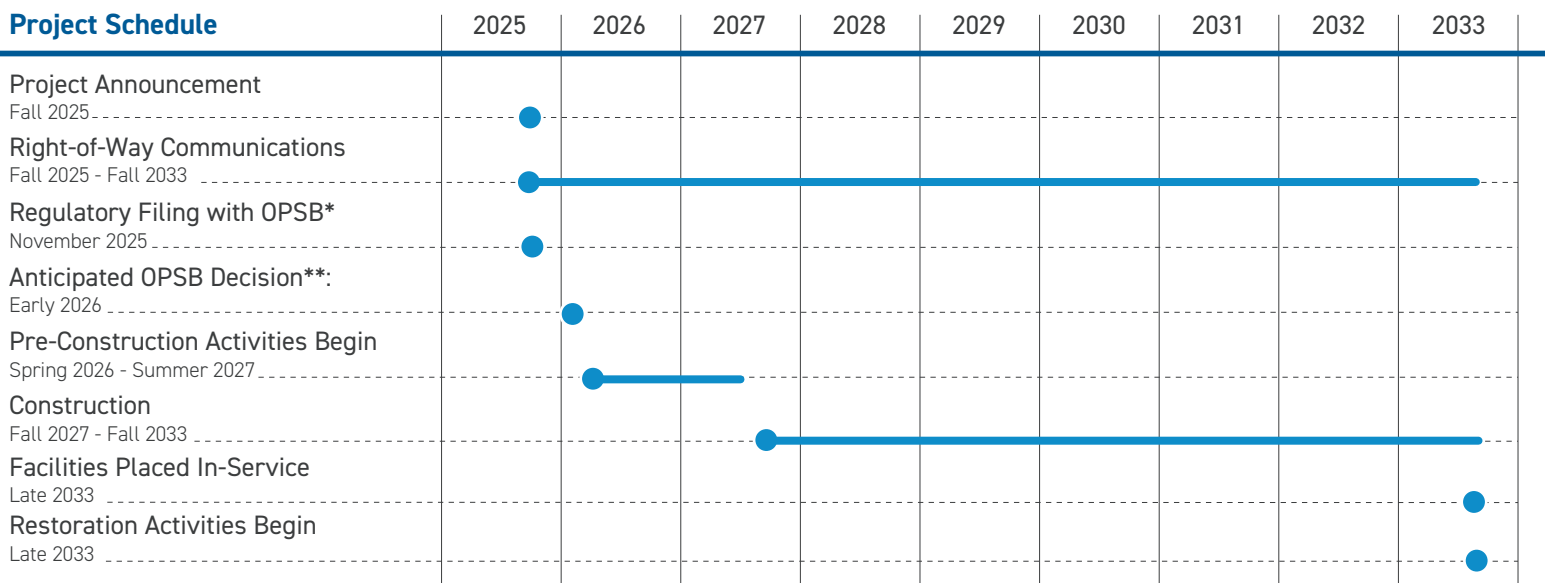
- Virginia Township in Coshocton County
- Jefferson, Jackson, Cass, Muskingum, Madison and Licking townships in Muskingum County
- Walnut Township in Fairfield County
- Jersey Township in Licking County
- Villages of Conesville, Dresden, Buckeye Lake and Millersport
- Cities of Fairfield, New Fairfield, New Albany and Coshocton

Crews plan to rebuild the transmission line within or near the existing right-of-way corridor. In some areas, they may need to update or supplement current easements to ensure the safe construction, operation and maintenance of the line. Easements are defined as land rights that provide the utility with access needed to safely build, operate and maintain its transmission lines.

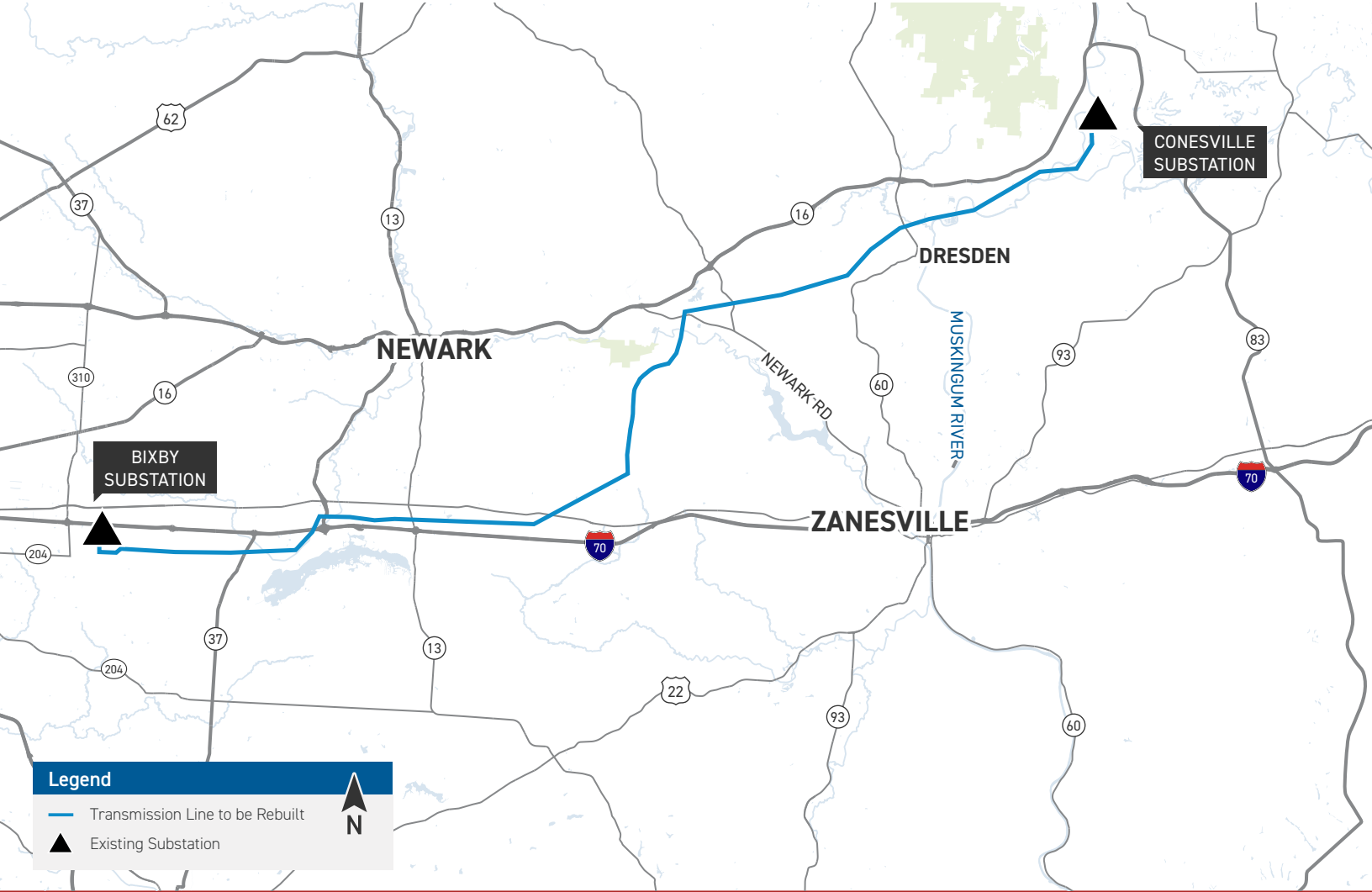
Before Construction

AEP Ohio right-of-way representatives plan to contact affected landowners regarding land surveys and other field work along the transmission line route and future construction access. Some pre-construction activities include: trimming or removing woody-stemmed vegetation, removing or relocating non-habitable structures from the right-of-way, and installing temporary gates, fencing and access roads.

Project Schedule



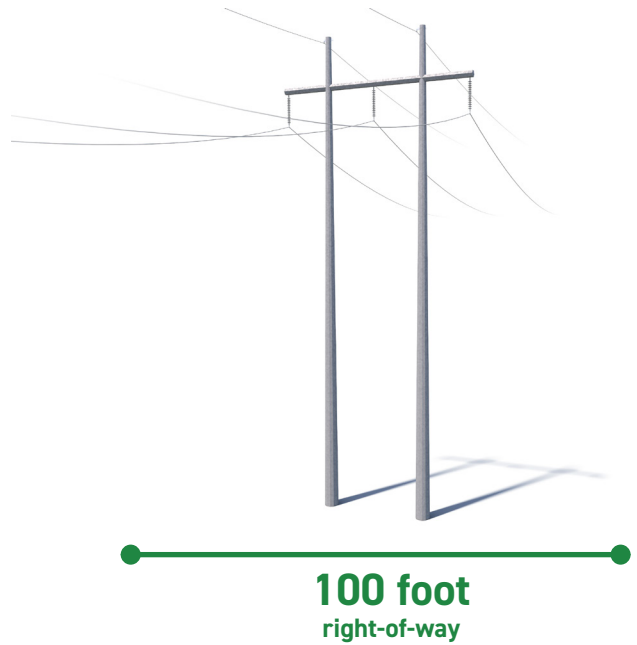
*Ohio Power Siting Board **Timeline subject to change



Typical Structures

This project involves the use of steel H-frame structures.

Structure Height: Approximately 80-165 feet*
 Right-of-Way Width: Approximately 100 feet*



**Exact structure, height, and right-of-way requirements may vary.*



We value your input. Please send comments and questions to:

Jasmine Anthony • Project Outreach Specialist Representing AEP
 jasmine.anthony@jacobs.com • 614-512-2775

AEPOhio.com/Conesville-Bixby