

# Lamping - Woodsfield Transmission Line

AEP Ohio representatives plan to upgrade the electric transmission network in Monroe County. The Lamping – Woodsfield Transmission Line Project involves building about 10 miles of 69-kilovolt (kV) transmission line and upgrading a substation to enhance service reliability in the area. Crews plan to begin construction in summer 2027 and conclude by summer 2028.

## What

The project involves:

- Building about 10 miles of 69-kV transmission line between the Lamping Substation, located along Floyd Hall Road in Graysville, and South Central Power's (SCP) Woodsfield Substation located along Cranes Nest Road in Woodsfield.\*
- Upgrading an existing substation.

\*The project team is seeking input on route options to build the new transmission line.

## Why

The project benefits:

- Strengthens service reliability for customers by providing an additional power source.
- Reduces the likelihood of power outages and improves restoration time if an outage does occur.
- Allows enhanced system flexibility when outages occur by providing a second power line to supply power.
- Services local electric companies and cooperatives, such as SCP and Woodsfield Municipal Electric, who receive power for their customers from AEP-owned transmission lines.

## Where

The project area includes Washington, Perry, Wayne and Center townships in Monroe County.

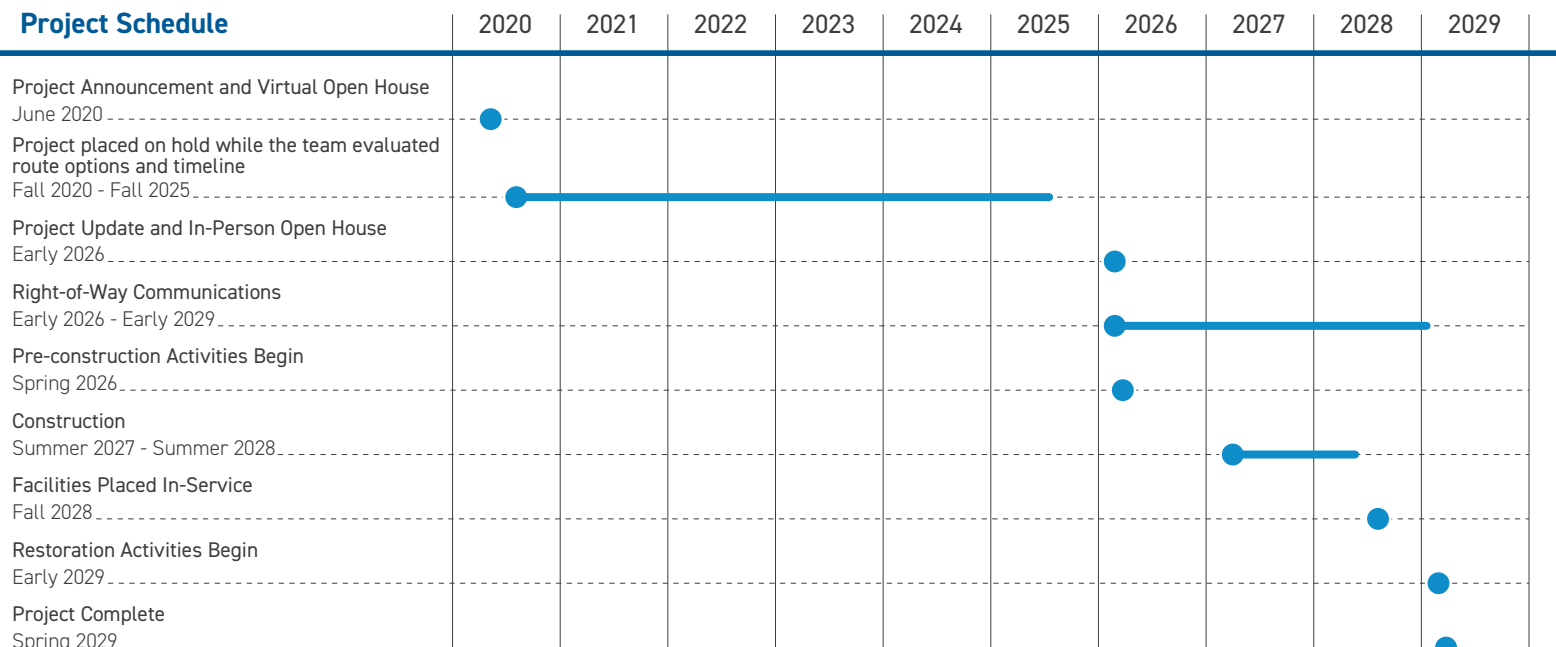
## Before Construction

AEP Ohio right-of-way representatives plan to contact affected landowners regarding land surveys and other field work along the transmission line route and future construction access.

Some pre-construction activities include:

- Trimming or removing woody-stemmed vegetation.
- Removing or relocating non-habitable structures from the right-of-way.
- Installing temporary gates, fencing and access roads.

## Project Schedule

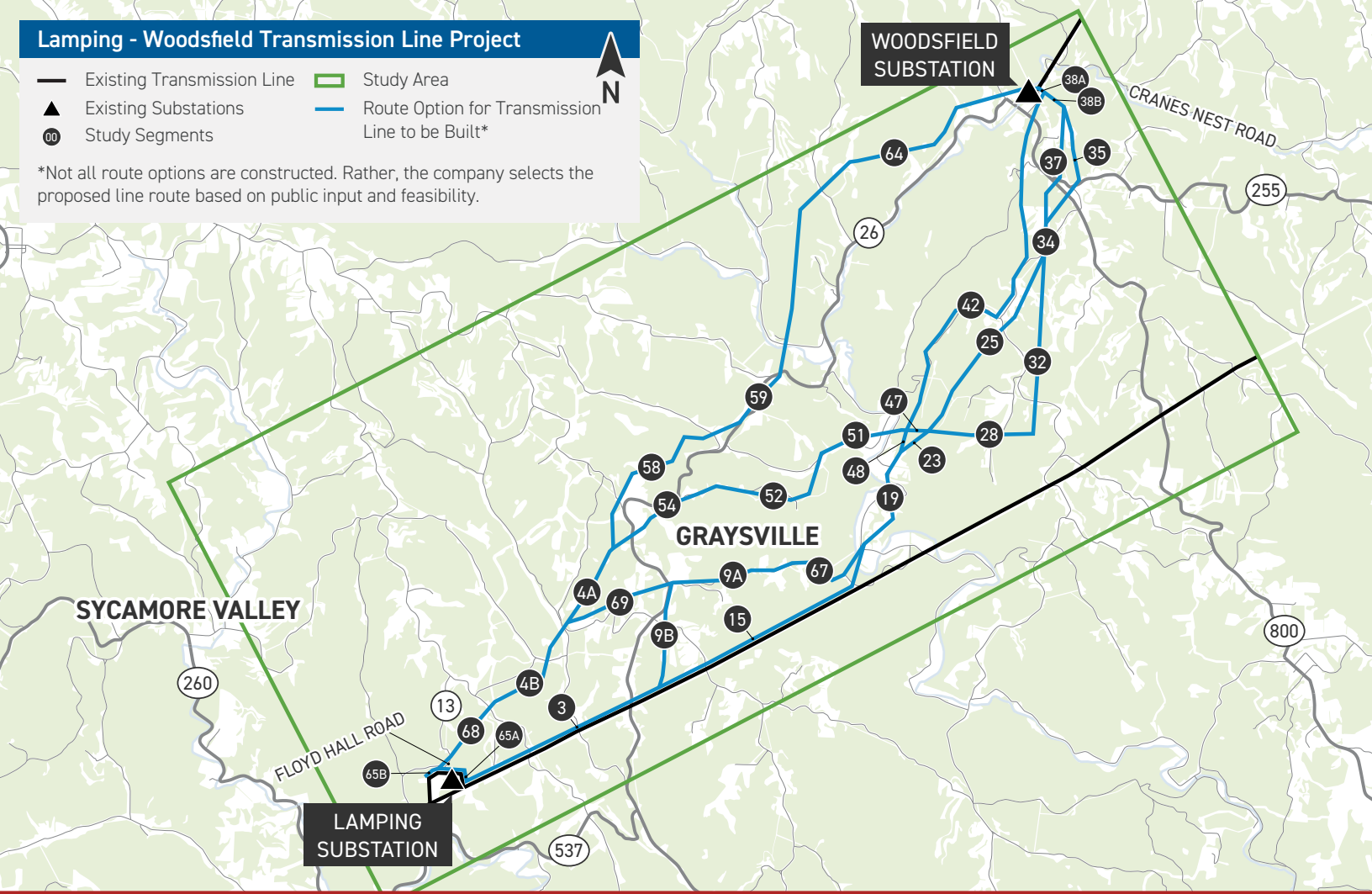


\*Timeline subject to change.

# Lamping - Woodsfield Transmission Line Project

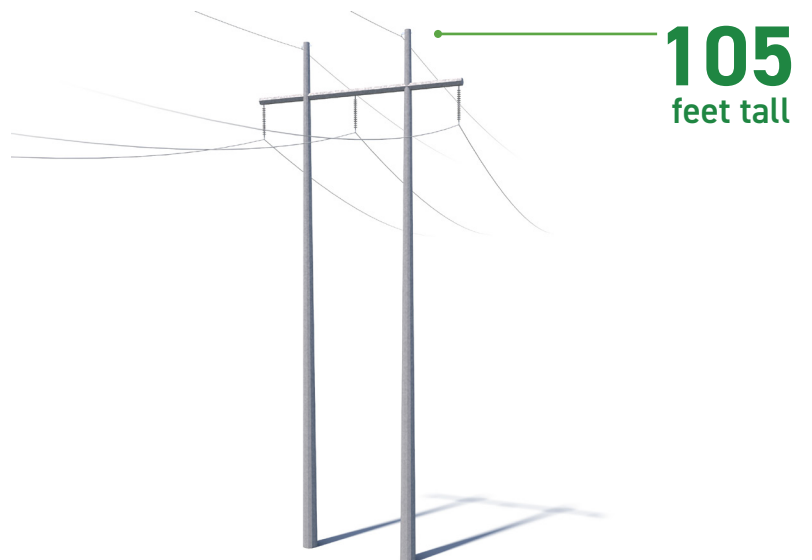
- Existing Transmission Line
- ▲ Existing Substations
- ⊙ Study Segments
- ▭ Study Area
- Route Option for Transmission Line to be Built\*

\*Not all route options are constructed. Rather, the company selects the proposed line route based on public input and feasibility.



## Typical Structures

This project involves the use of steel H-frame structures.



Structure Height: Approximately 105 feet\*  
 Right-of-Way Width: Approximately 100 feet\*

\*Exact structure, height, and right-of-way requirements may vary.



**We value your input. Please send comments and questions to:**

Jasmine Anthony • Project Outreach Specialist  
 jasmine.anthony@jacobs.com • 614-512-2775

[AEPOhio.com/Lamping-Woodsfield](http://AEPOhio.com/Lamping-Woodsfield)

01/29/2026