

EAST CAMBRIDGE - NEWCOMERSTOWN 69-KV TRANSMISSION LINE REBUILD PROJECT

AEP Ohio representatives plan power grid upgrades in Guernsey and Tuscarawas counties. The upgrades improve electrical reliability and enhance operational performance by replacing aging infrastructure. Crews expect construction to begin summer 2028 and conclude spring 2030.

WHAT

The project involves rebuilding about 20 miles of 69-kilovolt (kV) transmission line and upgrading transmission facilities from Newcomerstown Substation, located off Johnson Hill Road Southwest to East Cambridge Substation, located off Central Avenue.

WHY

Customers have experienced multiple power outages due to outdated wood monopole structures built in the 1920s. These upgrades reduce the likelihood of outages and improve electrical reliability and the line's operational performance.

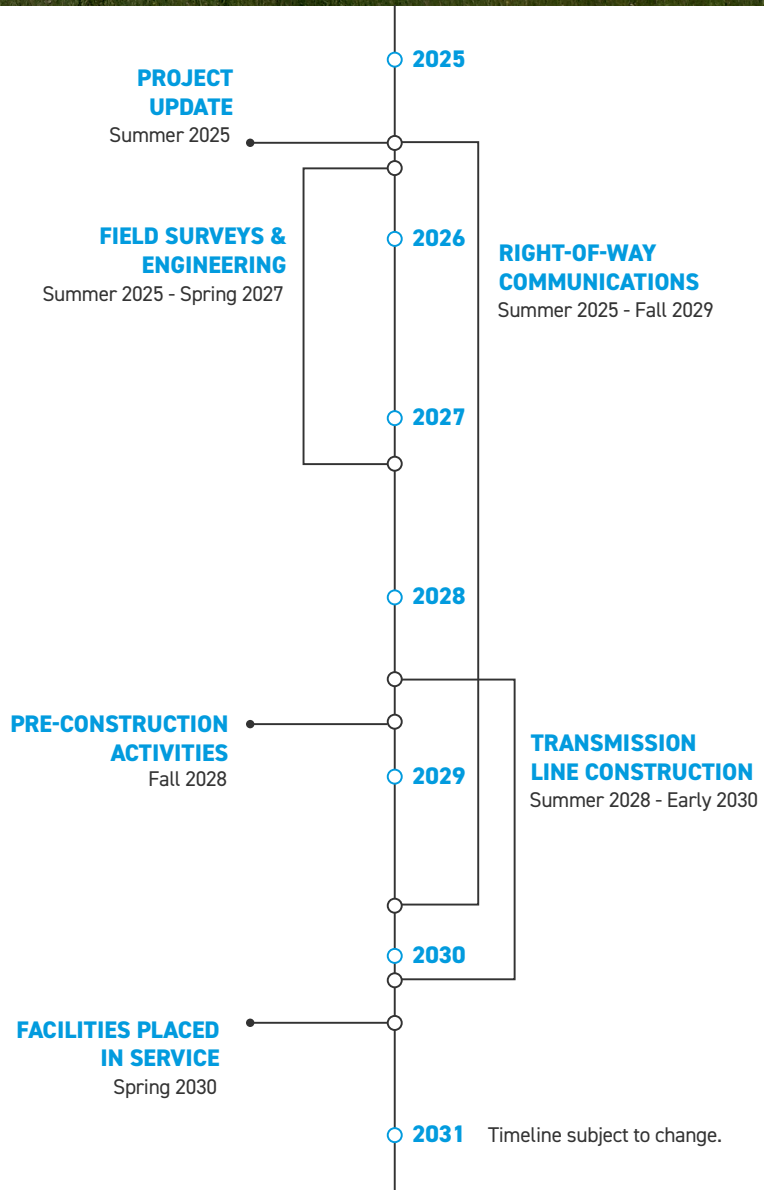
WHERE

Company representatives plan to rebuild the power line in or near the existing right-of-way, which may require updating existing property easements. Easements are defined land rights that property owners grant the utility to allow for the safe construction, operation and maintenance of the power line.

The project area includes:

- Guernsey County
- Tuscarawas County
- Cambridge Township
- Liberty Township
- Monroe Township
- City of Cambridge
- City of Newcomerstown

Study segments are currently under evaluation in select areas. These segments represent multiple route alternatives used to help determine the final transmission line route. Company representatives do not construct all study segments; instead, one preferred route is selected based on public input and feasibility.

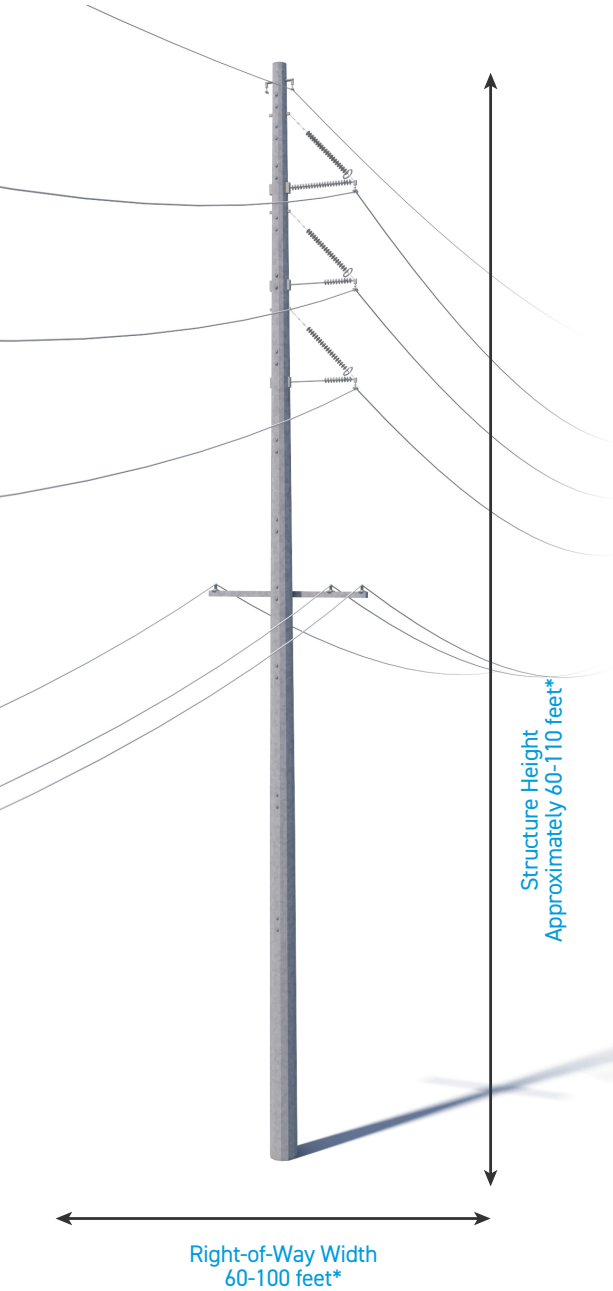


TYPICAL STRUCTURES

The project involves using single steel poles.

Typical Structure Height: **Approximately 60-110 feet***

Typical Right-of-Way Width: **60-100 feet***



*Exact structure, height, and right-of-way requirements may vary.



EAST CAMBRIDGE - NEWCOMERSTOWN TRANSMISSION LINE REBUILD PROJECT

- TRANSMISSION LINE TO BE REBUILT
- TRANSMISSION LINE TO BE RETIRED
- ▲ EXISTING SUBSTATION
- STUDY SEGMENT



WE VALUE YOUR INPUT. PLEASE SEND COMMENTS AND QUESTIONS TO:
 DARRYL JONES · PROJECT OUTREACH SPECIALIST
 AEPOHIO_OUTREACH@AEP.COM

