

ATHENS AREA IMPROVEMENTS PROJECT

AEP Ohio representatives plan power grid upgrades in Athens County. The upgrades address the growing power demand in the area and reduce larger, sustained community outages. Crews expect to begin construction fall 2027 and conclude by 2029.

WHAT

The project involves:

- Building approximately 2-5* miles of 138-kilovolt (kV) power line.
- Upgrading approximately 4-6* miles of 69-kV power line to 138-kV power line.
- Retiring approximately 15 miles of transmission facilities.
- Upgrading Lee Substation located off Virginia Street in Albany and Elliott Substation located off Blackburn Road in Athens.

*Mileage depends on proposed final line route determination.

The project requires Ohio Power Siting Board (OPSB) approval.

WHY

The improvements:

- Enhance electric reliability for customers by providing an additional power source to serve the area in the event of an outage on an existing transmission line.
- Ensure the area's growing power demand does not exceed the line's operational capacity in the event of future power outages or power line maintenance.
- Upgrade and retire deteriorating equipment to reduce the likelihood of larger, sustained community power outages.

WHERE

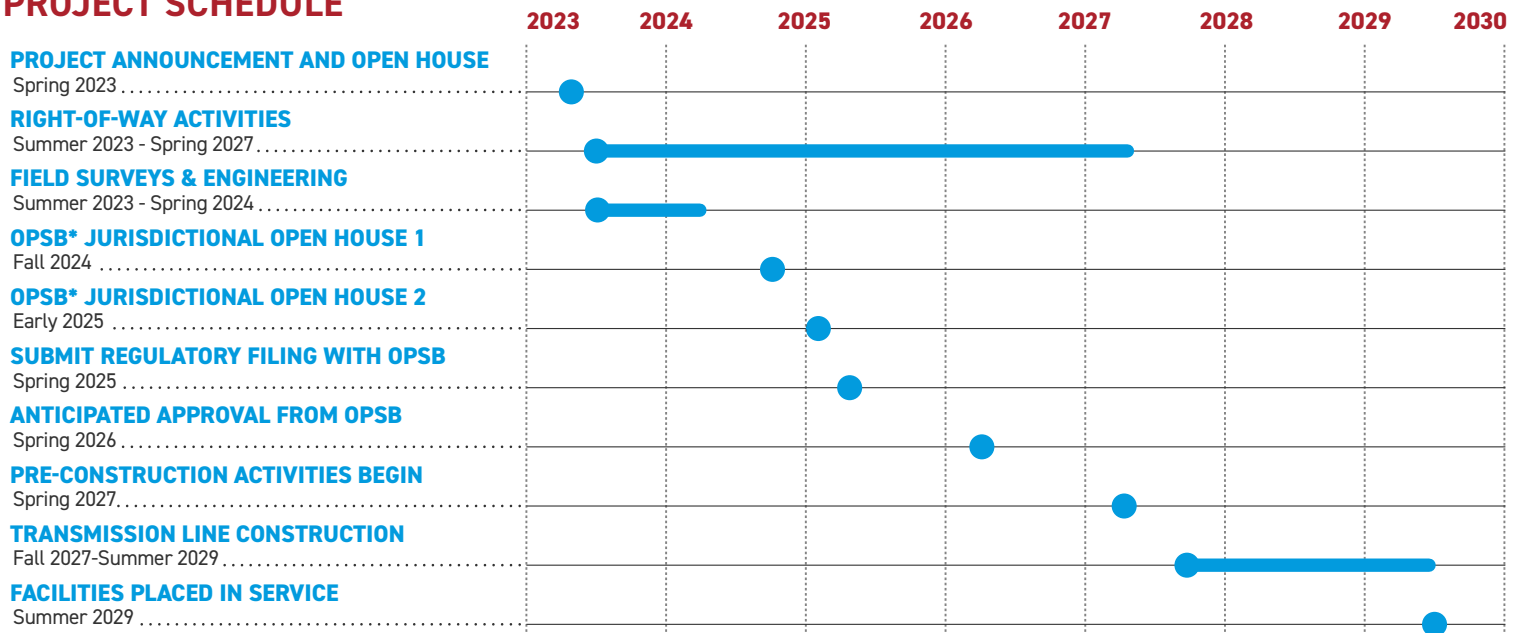
The project area involves:

- Athens County
- Alexander Township
- Athens Township
- Dover Township
- Lee Township
- City of Athens
- Village of Albany

Company representatives plan to evaluate possible study segments* to build a power line and rebuild existing power lines to help determine the location of the improvements.

*Study segments are multiple alternatives presented to determine a line route. Company representatives do not build all study segments but rather they select one route to build based on public feedback and feasibility.

PROJECT SCHEDULE



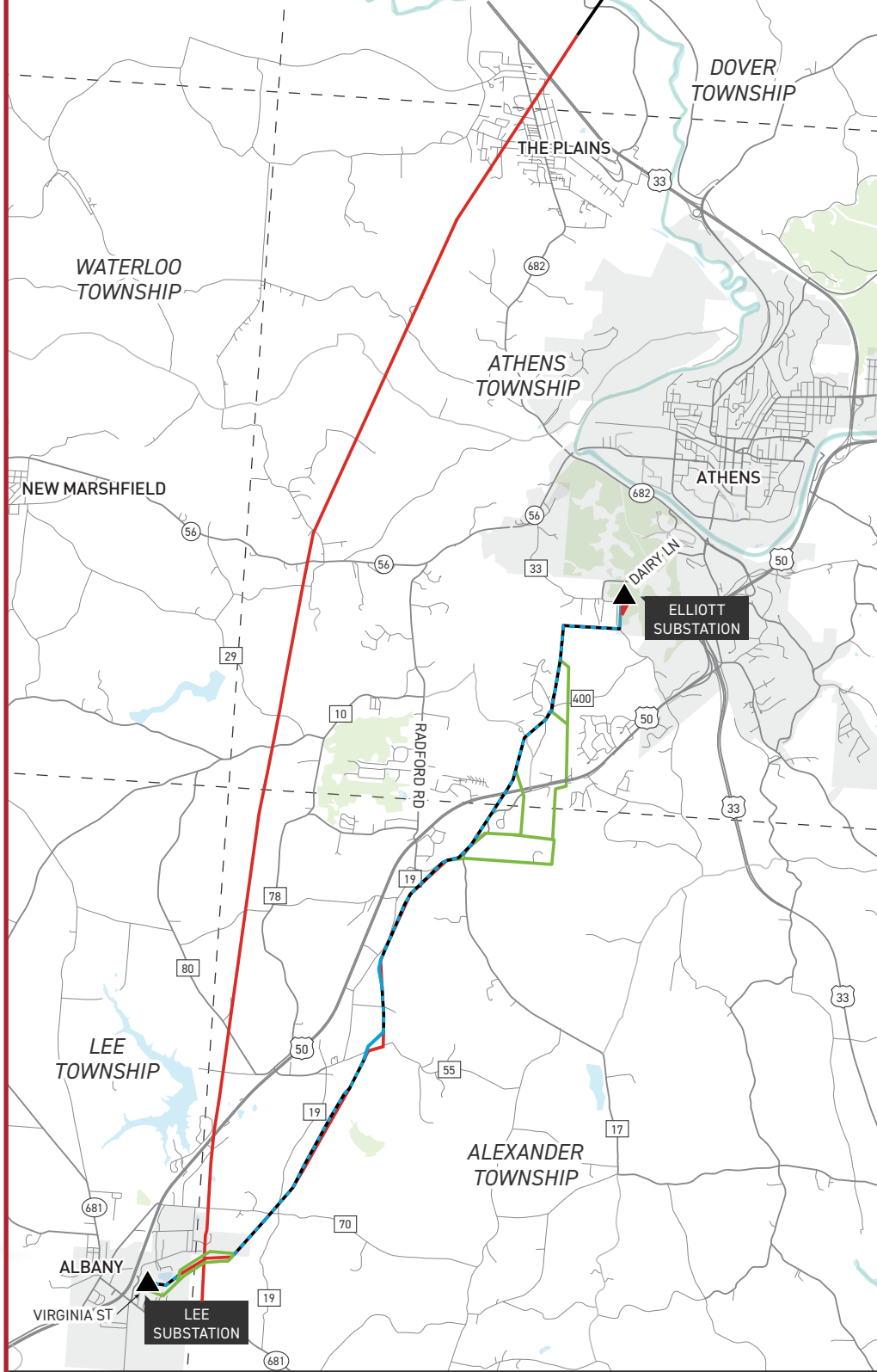
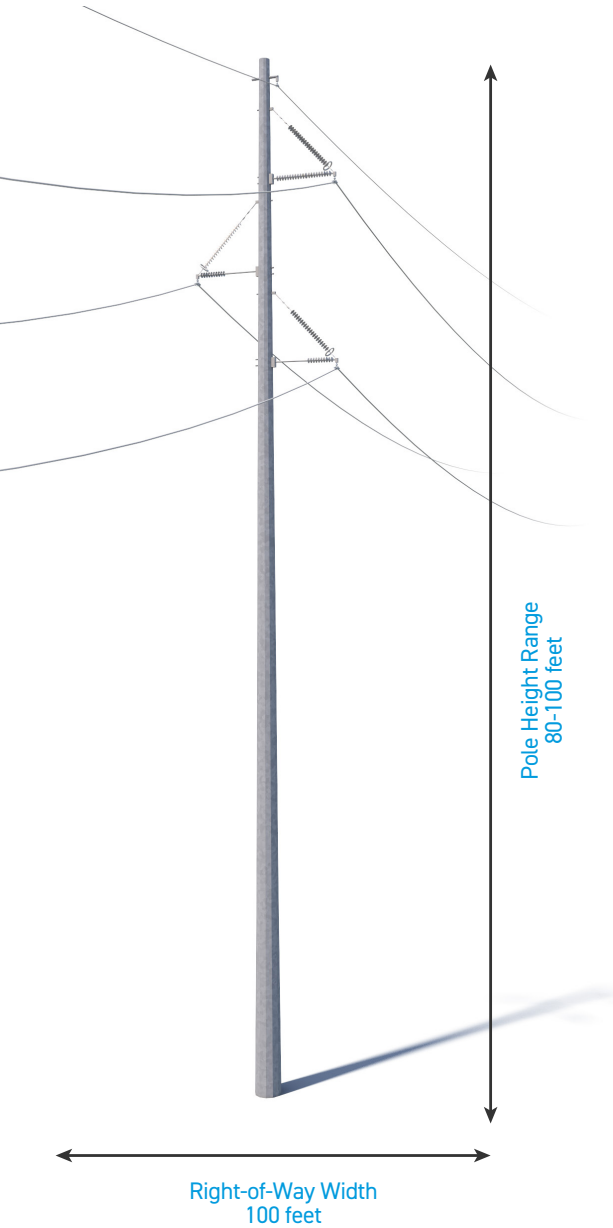
Timeline subject to change
*Ohio Power Siting Board

TYPICAL STRUCTURES

The project involves the use of single steel poles.

Pole Height Range: 80-100 feet

Right-of-Way Width: 100 feet



ATHENS AREA IMPROVEMENTS PROJECT

- EXISTING TRANSMISSION LINE
- TRANSMISSION LINE TO BE BUILT
- STUDY SEGMENT* FOR TRANSMISSION LINE TO BE BUILT
- TRANSMISSION FACILITIES TO BE REMOVED
- ▲ EXISTING SUBSTATION
- - TOWNSHIP BOUNDARY
- STUDY SEGMENT* FOR EXISTING TRANSMISSION LINE TO BE REBUILT



*Exact structure, height, and right-of-way requirements may vary.

*Study segments are multiple alternatives presented to determine a line route. Company representatives do not build all study segments but rather they select one route to build based on public feedback and feasibility.

WE VALUE YOUR INPUT. PLEASE SEND COMMENTS AND QUESTIONS TO:

AEP OHIO OUTREACH TEAM
 AEP OHIO_OUTREACH@AEP.COM • 614-933-2998
 AEP OHIO.COM/ATHENS

