

NILES AREA TRANSMISSION IMPROVEMENTS PROJECT: NILES NORTH

Indiana Michigan Power representatives plan to upgrade the electric transmission grid in Berrien and Cass counties in Michigan and St. Joseph County in Indiana. The Niles Area Transmission Improvements Project involves power line and substation improvements in several components. The Niles North component, located in Cass County, Michigan, involves expanding one substation, rebuilding one substation and building approximately 1.5 miles of 69-kilovolt (kV) transmission line.

WHAT

The Niles North component involves:

- Expanding the existing 69-kV Kenzie Creek Substation located off the corner of Thompson Road and White Street in Niles
- Rebuilding the 138-kV Pokagon Substation located off Barron Lake Road southwest of Cook Street
- Building approximately 1.5 miles of 69-kV transmission line

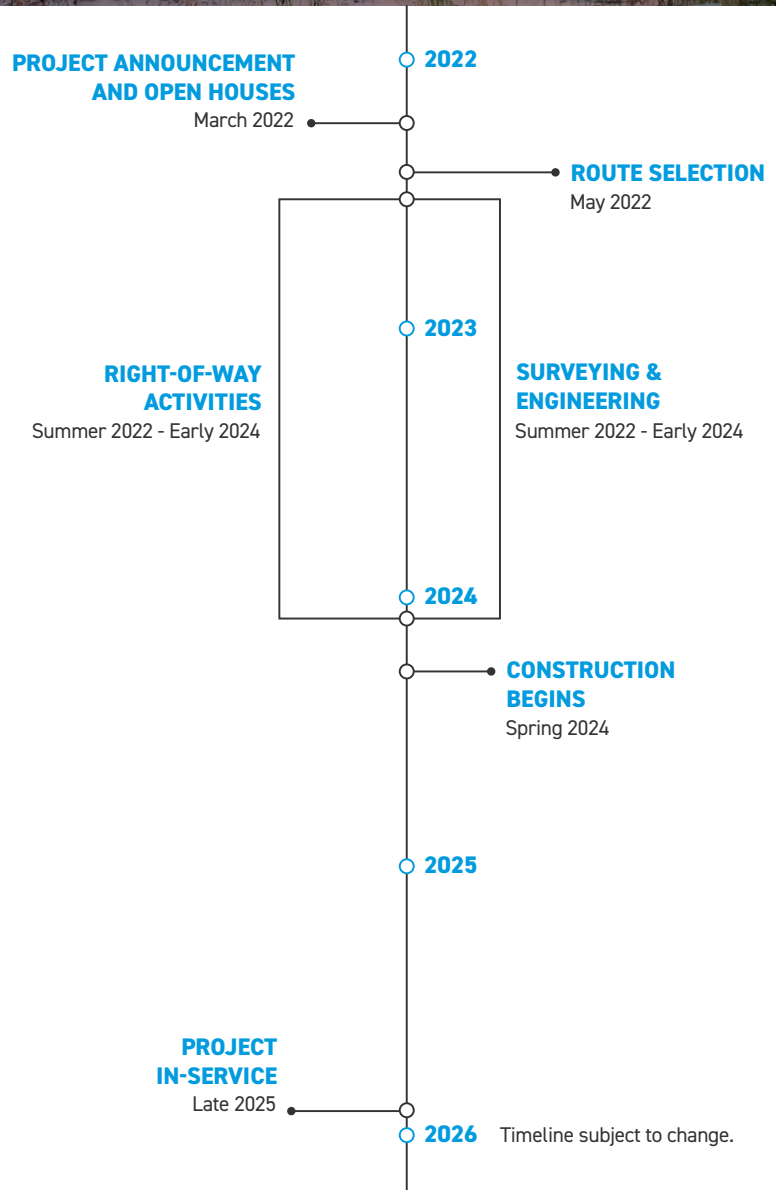
WHY

Project benefits include:

- Strengthens the local transmission grid and improves electric reliability for customers in the area
- Enhances electrical capacity to meet current and future community needs
- Replaces aging substation equipment to reduce the likelihood of service interruptions and connects the new equipment to the local power system

WHERE

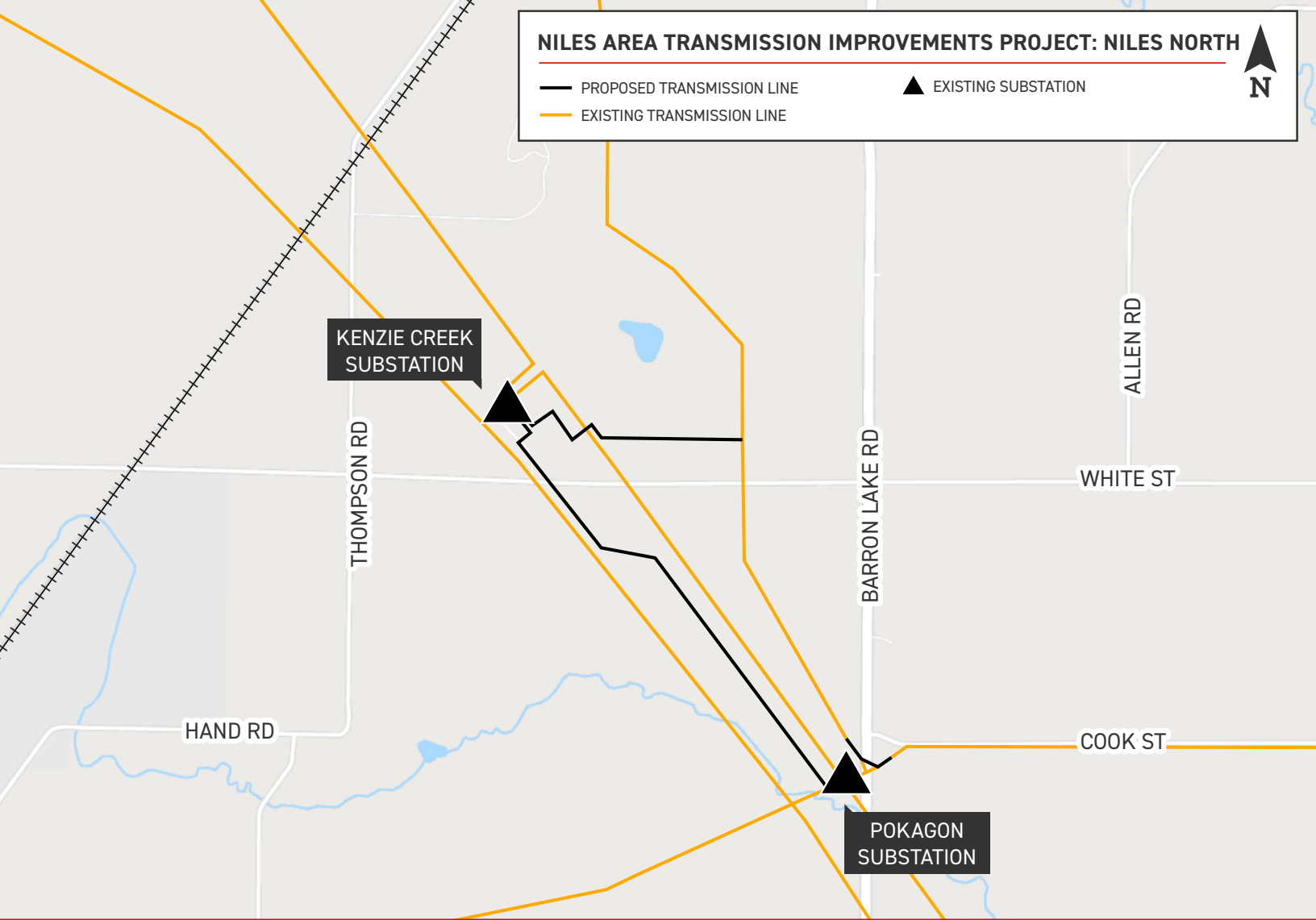
The project begins at the Pokagon Substation located off Barron Lake Road and proceeds northwest approximately 1 mile to the Kenzie Creek Substation located near the intersection of White Street and Thompson Road.



NILES AREA TRANSMISSION IMPROVEMENTS PROJECT: NILES NORTH

- PROPOSED TRANSMISSION LINE
- EXISTING TRANSMISSION LINE

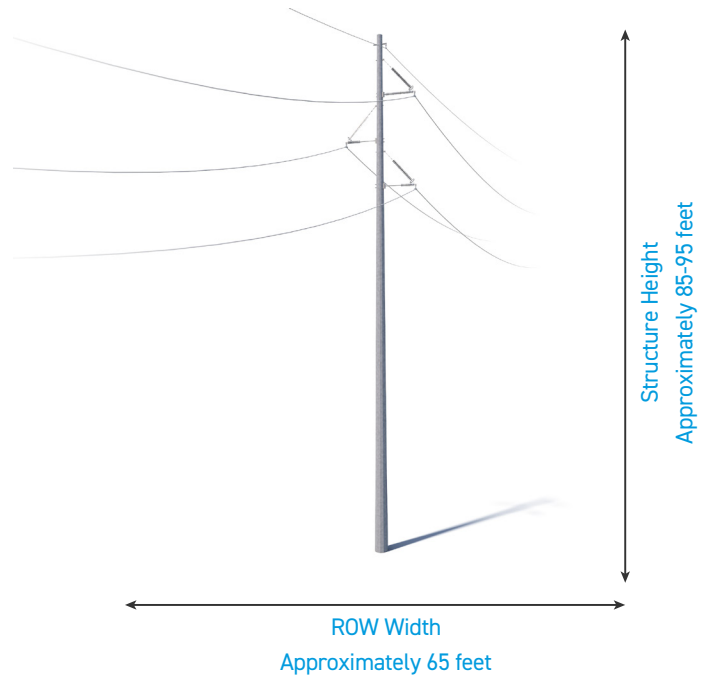
▲ EXISTING SUBSTATION



TYPICAL STRUCTURES

Plans call for the new line to be built using mostly single steel poles.

Structure Height: [Approximately 85-95 feet](#)
Right-of-Way Width: [Approximately 65 feet](#)



Exact structure, height, and right-of-way requirements may vary.

WE VALUE YOUR INPUT. PLEASE SEND COMMENTS AND QUESTIONS TO:
I&M OUTREACH TEAM
IM_OUTREACH@AEP.COM • 833-441-2260
INDIANAMICHIGANPOWER.COM/NILESAREA-NORTH

