

NILES AREA TRANSMISSION IMPROVEMENTS PROJECT: NILES CENTRAL

Indiana Michigan Power representatives plan to upgrade the electric transmission grid in Berrien and Cass counties in Michigan and St. Joseph County in Indiana. The Niles Area Transmission Improvements Project involves power line and substation improvements in several components. The Niles Central component, located in Berrien and Cass counties, Michigan, involves building one substation, upgrading one substation, building a half-mile 69-kilovolt (kV) transmission line and retiring approximately 2.5 miles of 34.5-kV transmission line.

WHAT

The Niles Central component involves:

- Building the 69-kV FourFlag Substation located between South 3rd Street and 11th Street in Niles
- Upgrading the 69-kV Lake Street Substation located near the intersection of 16th Street North and Lake Street in Niles
- Retiring 2.5 miles of 34.5-kV transmission line (while transmission wires will be removed, some wires will remain along the line to support distribution service to the area)
- Building a half-mile 69-kV transmission line to connect FourFlag Substation to the power system

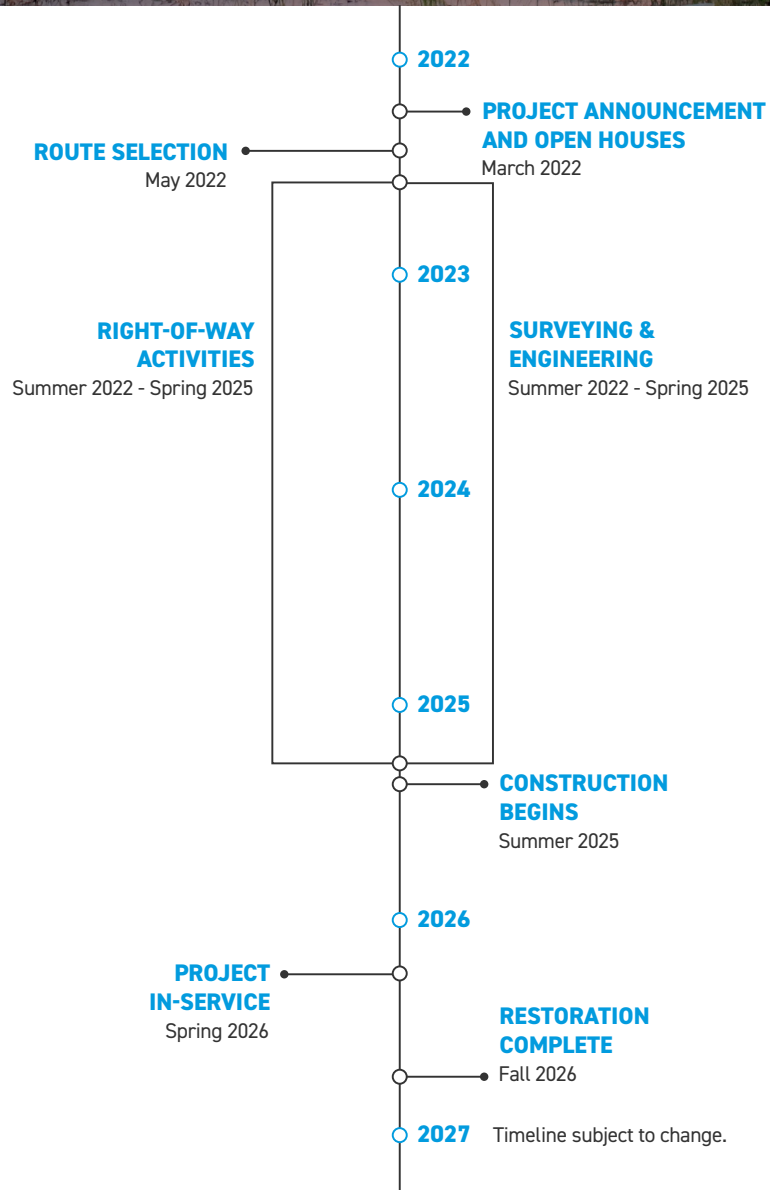
WHY

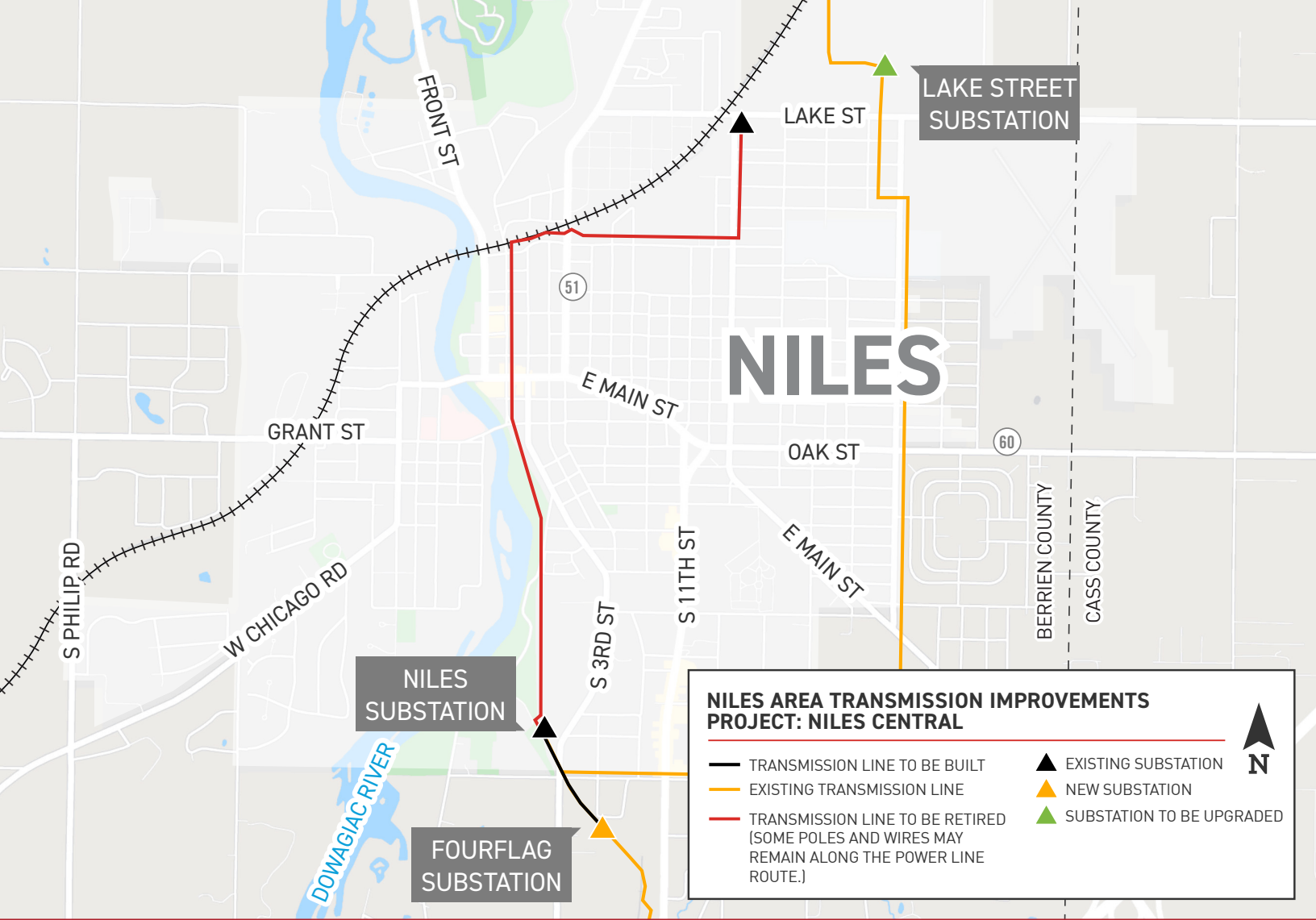
Project benefits include:

- Strengthens the local transmission grid and improves electric reliability for customers in the area
- Enhances the electrical capacity in the area to meet current demands and support future growth
- Upgrades aging equipment to reduce frequent maintenance

WHERE

The first segment of the project begins at the proposed FourFlag Substation located east of South 3rd Street and continues about a half mile northwest to the Niles Substation west of South 3rd Street. The project also includes upgrades to the Lake Street Substation north of the intersection of Lake Street and 16th Street North in Niles.

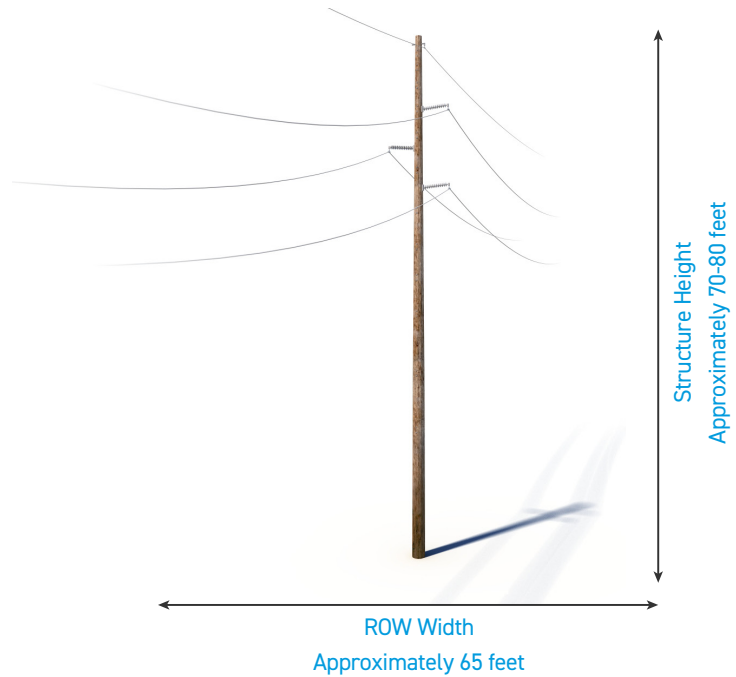




TYPICAL STRUCTURES

Plans call for crews to install wooden poles along the power line route.

Structure Height: [Approximately 70-80 feet](#)
 Right-of-Way Width: [Approximately 65 feet](#)



Exact structure, height, and right-of-way requirements may vary.

WE VALUE YOUR INPUT. PLEASE SEND COMMENTS AND QUESTIONS TO:
 I&M OUTREACH TEAM
 IM_OUTREACH@AEP.COM • 833-441-2260
 INDIANAMICHIGANPOWER.COM/NILESAREA-CENTRAL

