

BELFRY AREA

TRANSMISSION LINE PROJECT



Kentucky Power representatives plan to upgrade the electric transmission grid in Pike County. The Belfry Area Transmission Line Project involves building 6-8 miles of 69-kilovolt (kV) electric transmission line and an electrical substation to enhance electric reliability for area customers.

WHAT

The project involves:

- Building 6-8 miles of 69-kV transmission line
- Retiring approximately 9 miles of 46-kV transmission line
- Building the Orinoco Substation
- Retiring the Belfry Substation

This project involves filing an application with the Kentucky Public Service Commission.

WHY

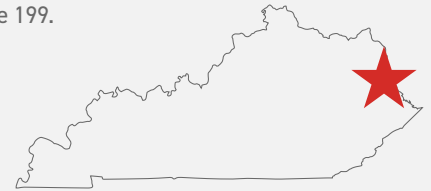
Project benefits include:

- Retiring approximately 9 miles of transmission line that includes wooden poles from the 1940's. The line has experienced multiple power outages in recent years.
- Providing a second source of power to customers served from the New Camp Substation.
- Upgrading the power grid from a 46-kV system to 69-kV, strengthening the local electric system and increasing reliability for area customers.

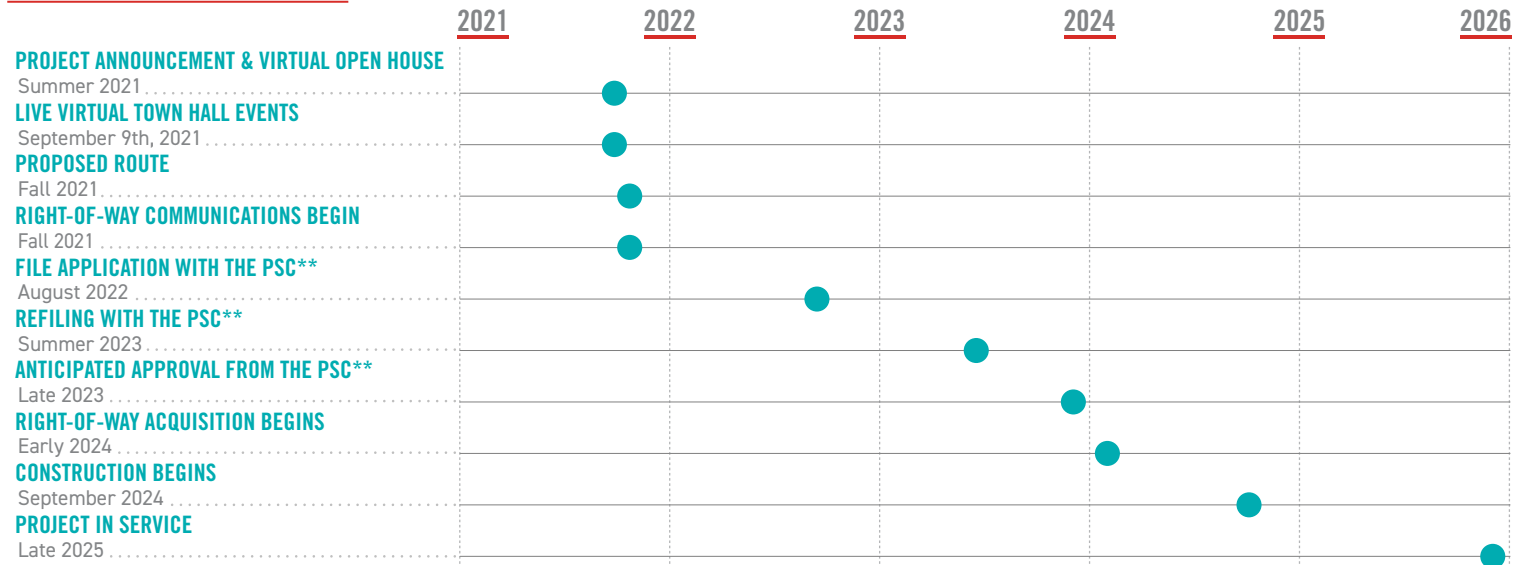
WHERE

The project begins at the New Camp Substation in South Williamson and continues southeast to the proposed Orinoco Substation located along Route 119.

From there the project continues south through Belfry to the Stone Substation near Route 199.

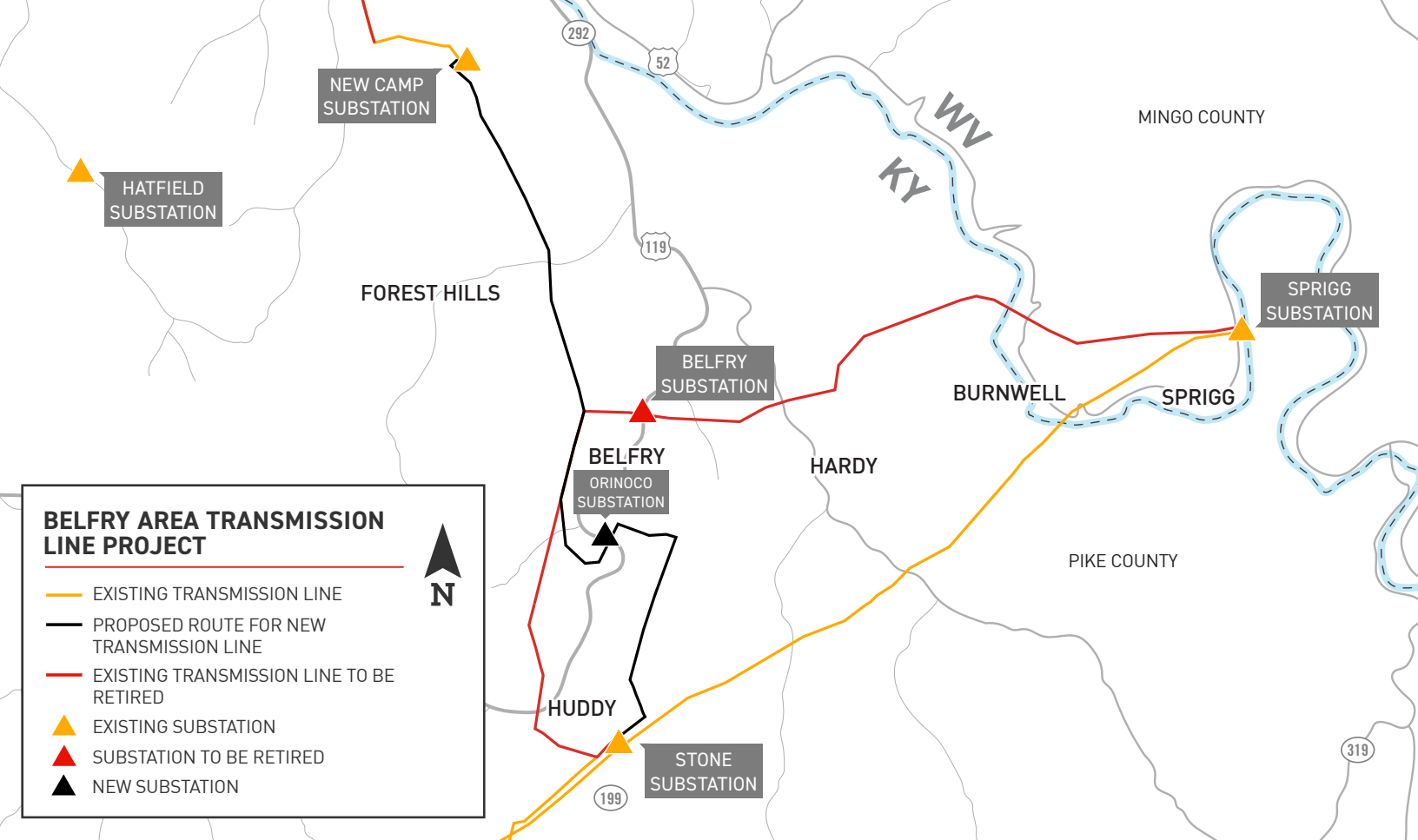


PROJECT SCHEDULE



**Kentucky Public Service Commission

*Timeline subject to change



TYPICAL STRUCTURES

Crews plan to install primarily H-frames. At certain points, crews could use Lattice towers and three-pole structures with guy wire.

Typical Structure Height:

Approximately 80-100 feet*

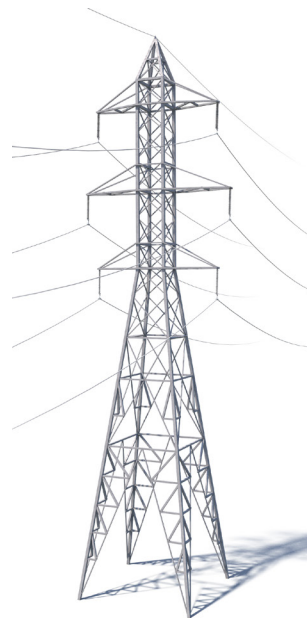
Typical Right-of-Way Width:

Approximately 100 feet*

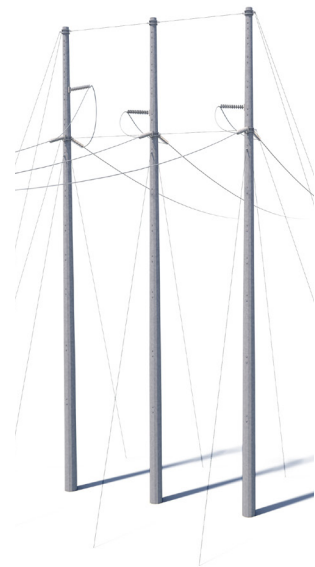


*PRIMARY STRUCTURE TO BE USED

H-FRAME*



LATTICE TOWER



THREE-POLE STRUCTURES

*Exact structure, height and right-of-way requirements may vary

KENTUCKY POWER VALUES YOUR INPUT ABOUT THIS PROJECT. PLEASE SEND COMMENTS AND QUESTIONS TO:

CORTNEY MUSTARD

Project Outreach Specialist

833-760-0604

KentuckyPowerOutreach@aep.com

KentuckyPower.com/Belfry

