

South Bend-Niles Transmission Line Project

Indiana Michigan Power (I&M) representatives plan power grid upgrades to improve electric reliability for customers in southwestern Michigan and northern Indiana. The South Bend-Niles Transmission Line Project involves updating a substation and about 12 miles of electric transmission line from South Bend, Indiana to Niles, Michigan.

What

The project involves:

- Rebuilding about 4 miles of power line from FourFlag Substation off South 3rd Street in Niles to the Indiana State Line on Stateline Road.
- Rebuilding about 8 miles of power line from Stateline Road to South Bend Substation on Edison Road.
- Upgrading Swanson Substation off Hickory Road in Granger.

Why

The project benefits include:

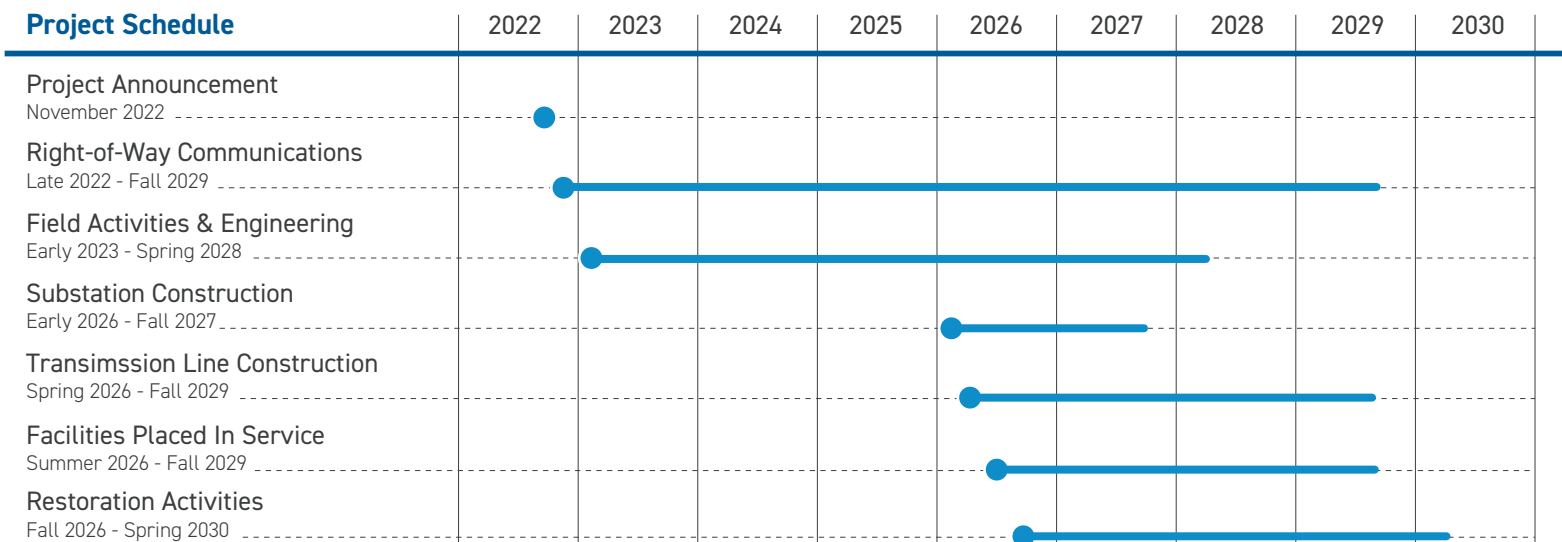
- Strengthening the local electric transmission system by replacing aging poles and wires with modern equipment.
- Increasing capacity to address the growing demand for electricity in the area through upgrading Swanson Substation.
- Improving operational performance, reducing the likelihood of extended power outages and enhancing electric reliability for area customers.

Where

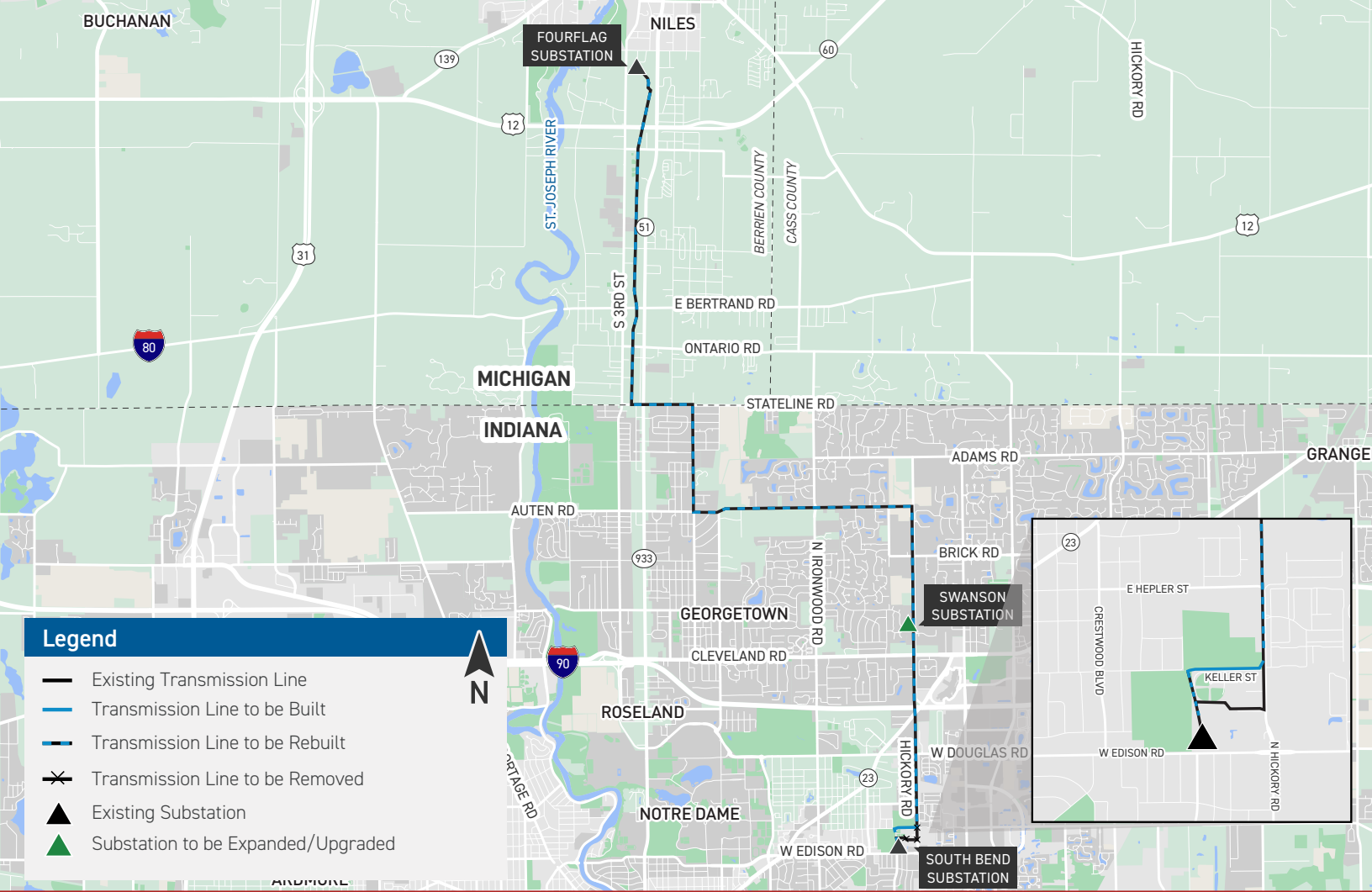
The project area includes:

- South Bend, IN
- Clay and Harris townships in St. Joseph County
- Niles, MI
- Niles and Milton townships in Berrien County

Project Schedule



*Timeline subject to change.



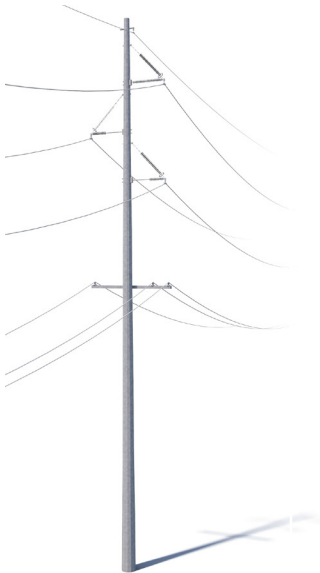
Legend

- Existing Transmission Line
- Transmission Line to be Built
- Transmission Line to be Rebuilt
- Transmission Line to be Removed
- Existing Substation
- Substation to be Expanded/Upgraded



Typical Structures*

The project involves installing steel poles.

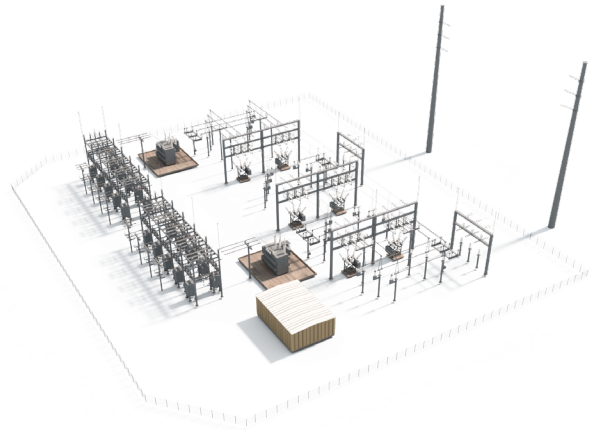


Typical Pole Height:
Approximately 90 feet*
Typical Right-of-Way Width:
Approximately 60 feet*

**Exact structure, height, and right-of-way requirements may vary.*

Substation**

Substations serve as electrical intersections converting power to voltage levels for use in homes and businesses.



***Substation shown is a general depiction of the proposed facility. It does not represent final design.*



We value your input. Please send comments and questions to:

I&M Outreach Team
IM_Outreach@aep.com • (833) 441-2260

IndianaMichiganPower.com/SouthBend-Niles