

JAY COUNTY AREA IMPROVEMENTS



Indiana Michigan Power (I&M) plans to strengthen the electric transmission system in east-central Indiana. The proposed improvements in Jay County involves building about 9 miles of new power line, rebuilding about 10 miles of power lines and upgrading two substations. These improvements would increase reliability, reduce power outages and speed recovery of service when outages occur.

WHAT

- Rebuilding about 8 miles of 138-kV (kilovolt) line
- Rebuilding about 2 miles of 69-kV line
- Building about 9 miles of new 69-kV line
- Upgrading two substations

WHY

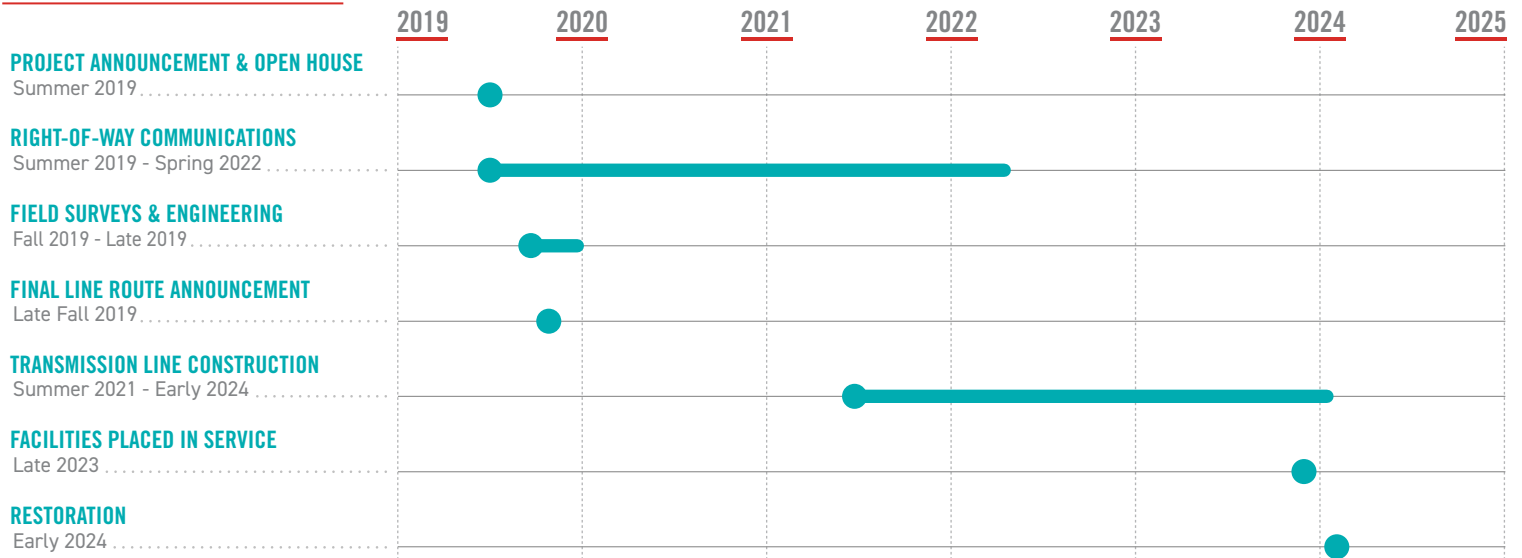
- Strengthens the local electric transmission system
- Reduces the likelihood of power outages
- Speeds recovery of service when outages occur
- Prepares the electric system to support economic development.

WHERE

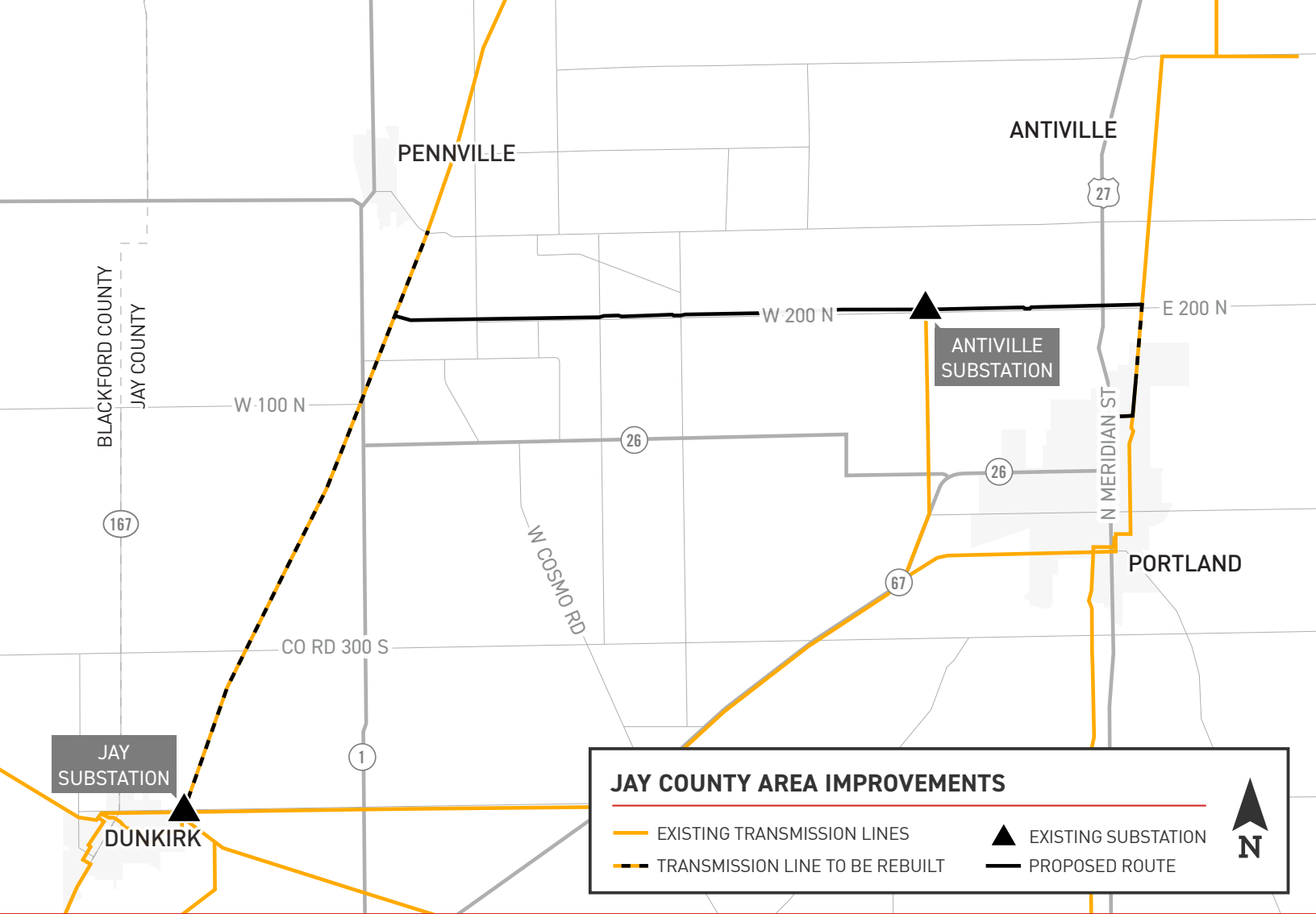
The upgrades take place in Jefferson, Greene, Wayne, Richland, Knox and Penn townships in Jay County.



PROJECT SCHEDULE



*Timeline subject to change.



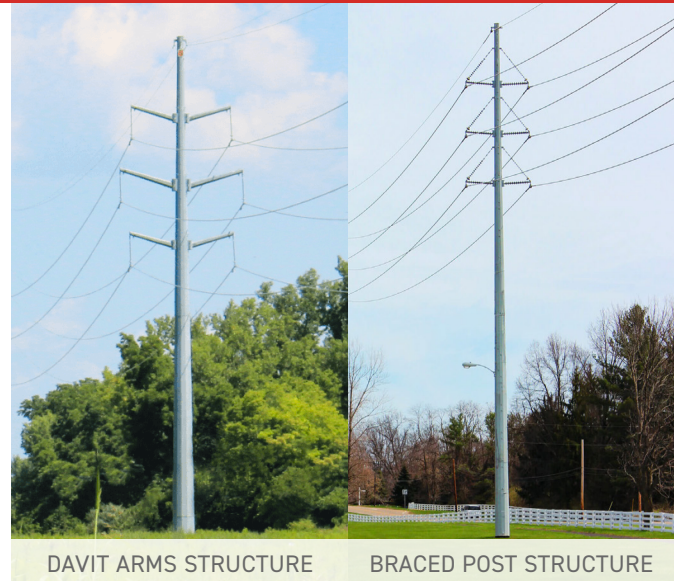
TYPICAL STRUCTURES

I&M plans to build two types of monopole structures. I&M is committed to meeting the energy needs of customers while protecting the environment and natural beauty of the region.

Structure Height: 90 - 120 feet

Right-of-Way Width: 100 feet

*Exact structure, height and right-of-way requirements may vary



DAVIT ARMS STRUCTURE

BRACED POST STRUCTURE

INDIANA MICHIGAN POWER VALUES YOUR INPUT ABOUT THIS PROJECT. PLEASE SEND COMMENTS AND QUESTIONS TO:

✉ Indiana Michigan Power
Eric Giffey
P.O. Box 60
Fort Wayne, IN 46801

✉ eagiffey@aepp.com
☎ 614-736-8971
➡ [IndianaMichiganPower.com/JayCounty](https://www.IndianaMichiganPower.com/JayCounty)

