

NORTH MAGAZINE- WEST BOONEVILLE TRANSMISSION IMPROVEMENTS PROJECT

Southwestern Electric Power Company (SWEPCO) representatives plan to strengthen the electric system in the Magazine region by rebuilding an aging transmission line.

WHAT

The project involves rebuilding about 14 miles of 161-kilovolt transmission line in southwest Logan County.

WHY

The North Magazine - West Booneville transmission line is nearly 50 years old and is past its planned service life.

The project:

- Replaces deteriorating wooden poles with modern steel poles
- Strengthens the line against severe weather impacts
- Decreases the likelihood and duration of sustained, community-wide power outages

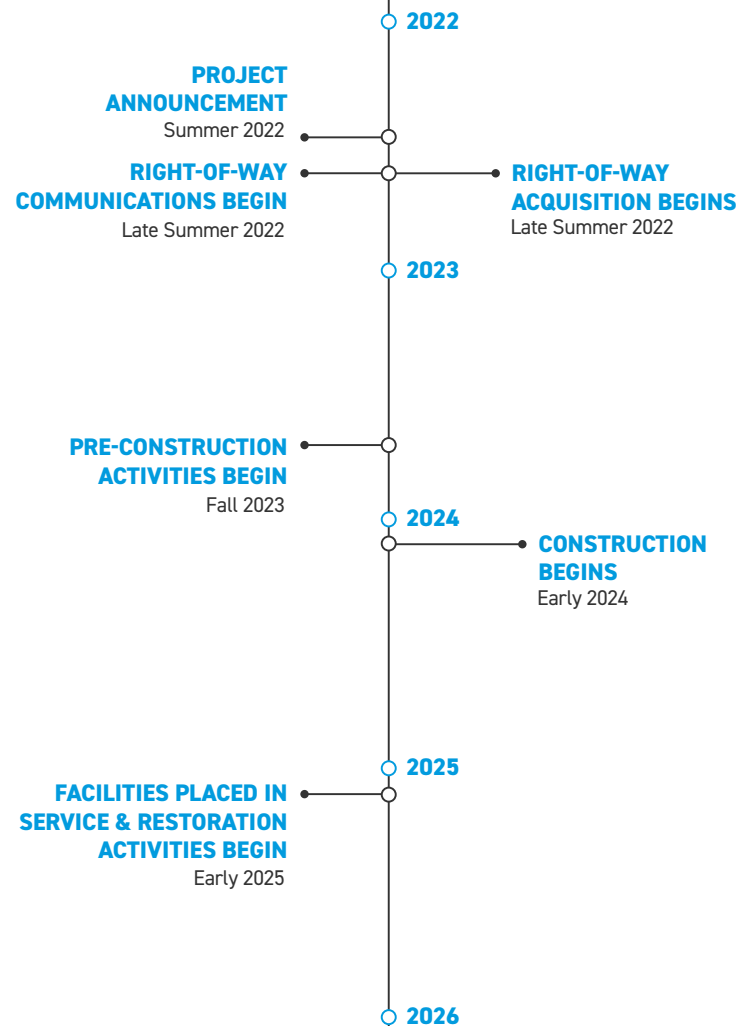
WHERE

The transmission line stretches between SWEPCO's North Magazine Substation, located approximately 5 miles north of Magazine off Turkey Ridge Road, and the West Booneville Substation, located about a mile southwest of Booneville off Roy Franks Lane.

BEFORE CONSTRUCTION

To safely perform their work, crews may need to:

- Remove woody-stemmed vegetation from the right-of-way
- Install temporary gates, fencing and access roads
- Install culverts for water management

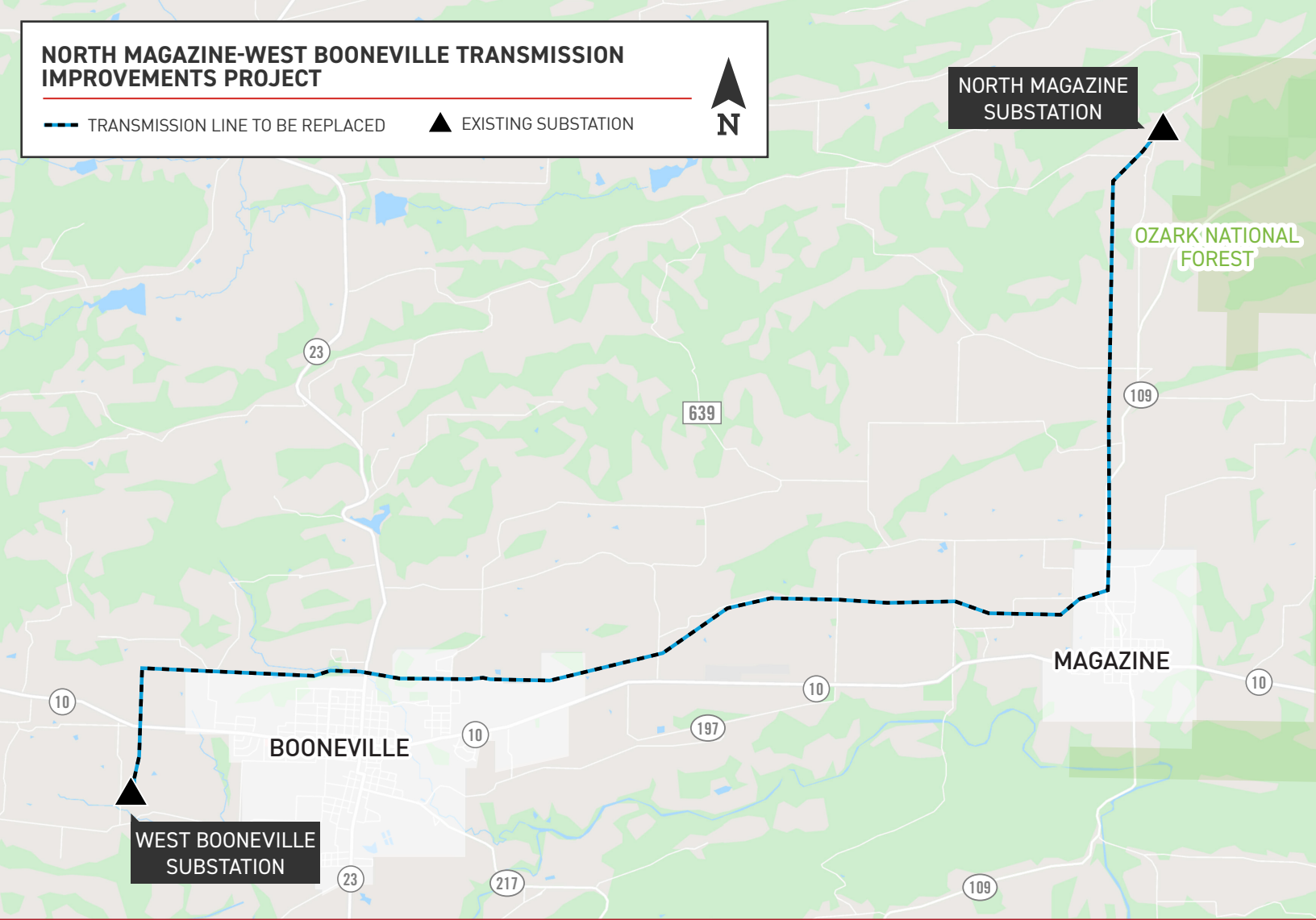


*Timeline is subject to change

NORTH MAGAZINE-WEST BOONEVILLE TRANSMISSION IMPROVEMENTS PROJECT

— TRANSMISSION LINE TO BE REPLACED

▲ EXISTING SUBSTATION



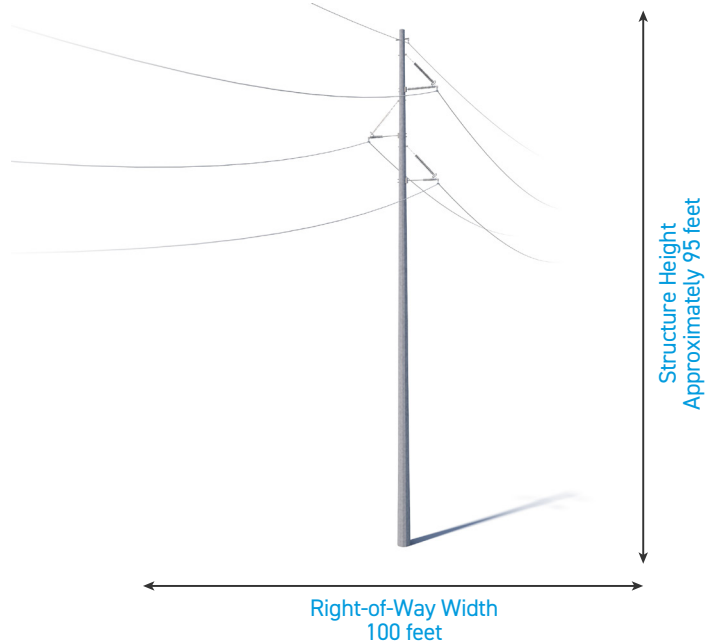
TYPICAL STRUCTURES

Crews plan to install single-pole steel structures.

Typical Structure Height: [Approximately 95 feet*](#)

Typical Distance Between Structures: [Approximately 500 feet*](#)

Typical Right-of-Way Width: [100 feet](#)



*Exact structure, height, and right-of-way requirements may vary.

WE VALUE YOUR INPUT. PLEASE SEND COMMENTS AND QUESTIONS TO:

MATT HAMES · PROJECT OUTREACH SPECIALIST

MCHAMES@AEP.COM · 918-237-6736

SWEPSCO.COM/NM-WB

