

# DE QUEEN - NASHVILLE TRANSMISSION LINE REBUILD PROJECT

Southwestern Electric Power Company (SWEPCO) representatives plan to rebuild about 29 miles of electric transmission line in Sevier and Howard counties. This project strengthens the local electric system and provides more reliable service in southwestern Arkansas. Crews plan to start construction in early 2027 and conclude in spring 2028.

## WHAT

The project involves:

- Rebuilding about 29 miles of 69-kilovolt transmission line
- Making minor upgrades to area substations

## WHY

The existing De Queen - Nashville transmission line was built in 1950 and has exceeded its planned service life. Since 2015, there have been more than 30 outages associated with equipment on this line.

The project:

- Improves electric reliability for customers and strengthens the local power grid
- Replaces deteriorating wooden poles with modern steel poles to strengthen the line against severe weather impacts and reduce frequent maintenance
- Upgrades substation equipment to reduce the likelihood of sustained, community-wide power outages

## WHERE

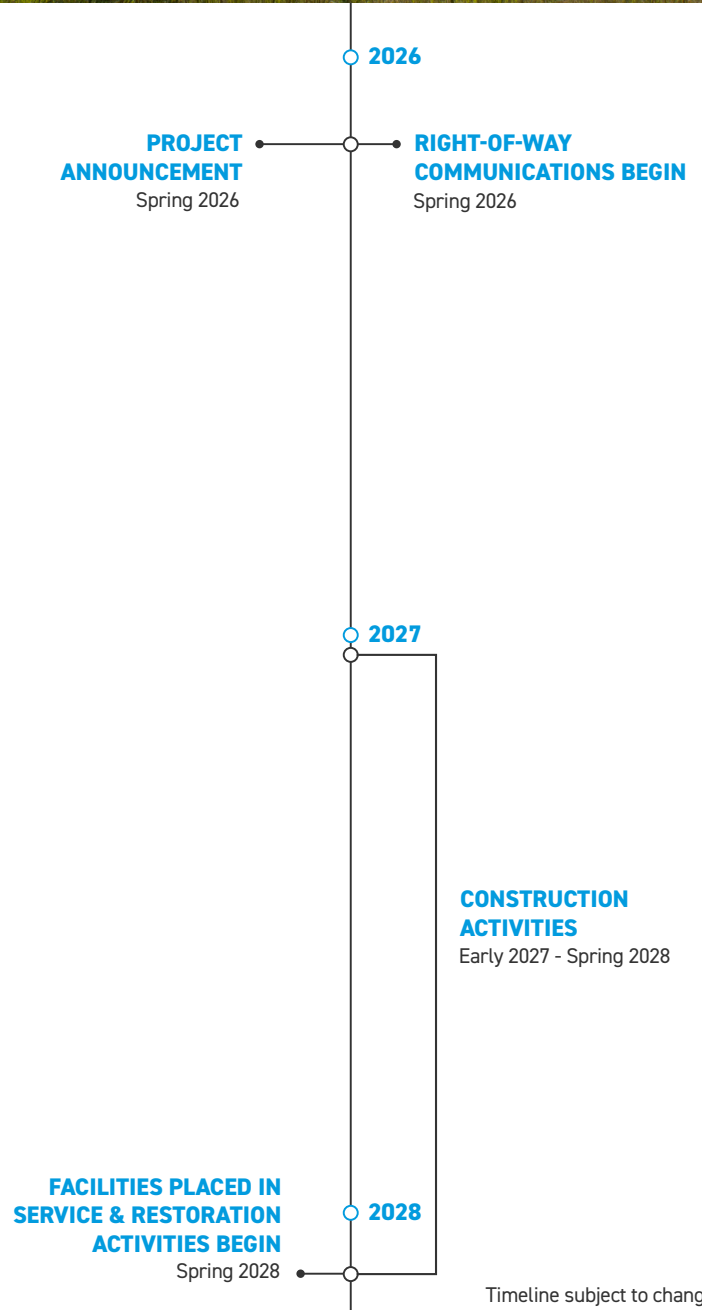
The transmission line stretches between the DeQueen Substation, located in De Queen off Rockefeller Avenue, and the Nashville Substation, located in Nashville off West Pope Street.

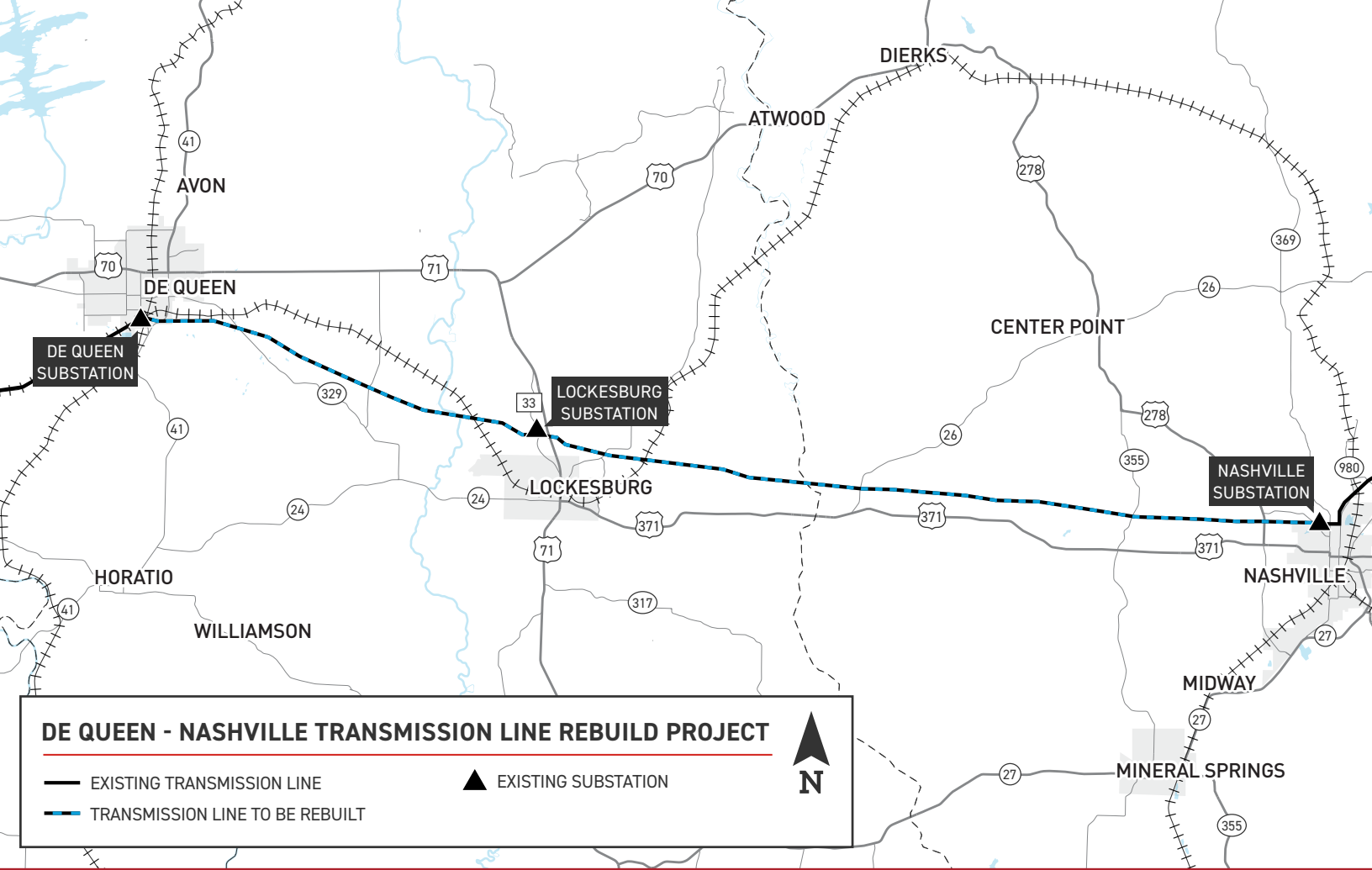
## BEFORE CONSTRUCTION

A right-of-way agent may contact you if SWEPCO needs to acquire new or update existing easements on your property. You will also be contacted should crews need to access your property for survey work or construction.

To safely perform their work, crews may need to:

- Remove woody-stemmed vegetation from the right-of-way
- Install temporary gates, fencing and access roads
- Install culverts for water management





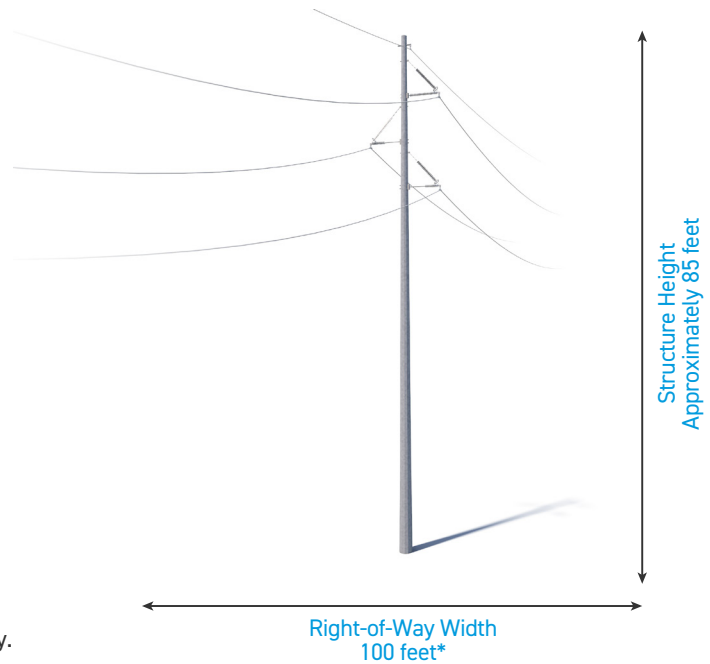
## TYPICAL STRUCTURES

Crews plan to install steel single-pole structures.

Typical Structure Height: **Approximately 85 feet\***

Typical Distance Between Structures: **Approximately 600 feet\***

Typical ROW Width: **100 feet\***



\*Exact structure design, height, and right-of-way requirements may vary.

**WE VALUE YOUR INPUT. PLEASE SEND COMMENTS AND QUESTIONS TO:**  
 MATT HAMES · PROJECT OUTREACH SPECIALIST  
 SWEPCO\_OUTREACH@AEP.COM · (888) 793-7261  
 SWEPCO.COM/DQ-NASHVILLE

