

# RAVENSWOOD

## AREA IMPROVEMENTS PROJECT



An AEP Company

BOUNDLESS ENERGY™

Appalachian Power and its affiliate, AEP West Virginia Transmission Company Inc., plan to increase electric reliability by making upgrades to the power grid in Jackson and Mason counties in West Virginia. The Ravenswood Area Improvements Project involves rebuilding approximately 30 miles of aging transmission infrastructure with modern equipment to reduce the likelihood of extended outages to customers. Construction is expected to start in the fall of 2019 and last about two years. Estimated budget for the project is \$60 million.



### WHAT

The Ravenswood Area Improvements Project consists of rebuilding approximately 30 miles of transmission line in the Ravenswood, Ripley, Cottageville and Letart areas of Jackson and Mason counties. The work replaces aging infrastructure with modern equipment to ensure continued reliable electric service. The route will be determined after public input is received on the preliminary study segments. Most of the rebuild will require new right-of-way.

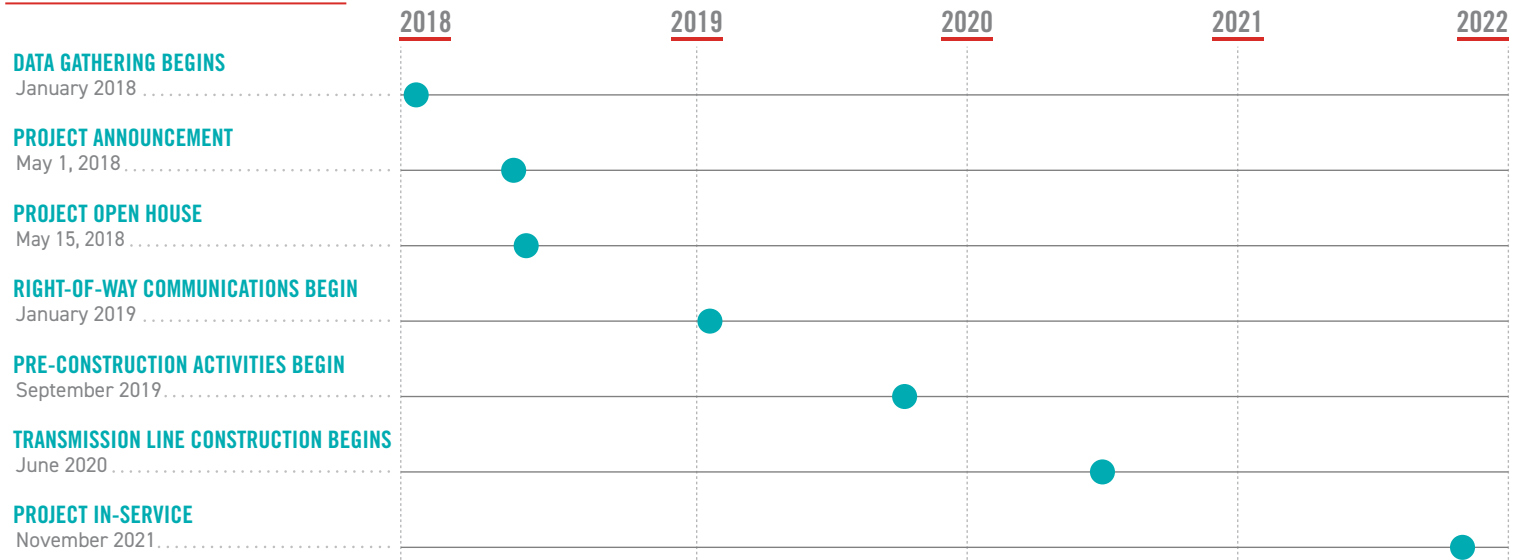
### WHY

The existing transmission grid needs to be updated to increase electric reliability to customers. Replacing the aging infrastructure with modern equipment will reduce outages to customers while decreasing restoration times when outages do occur.

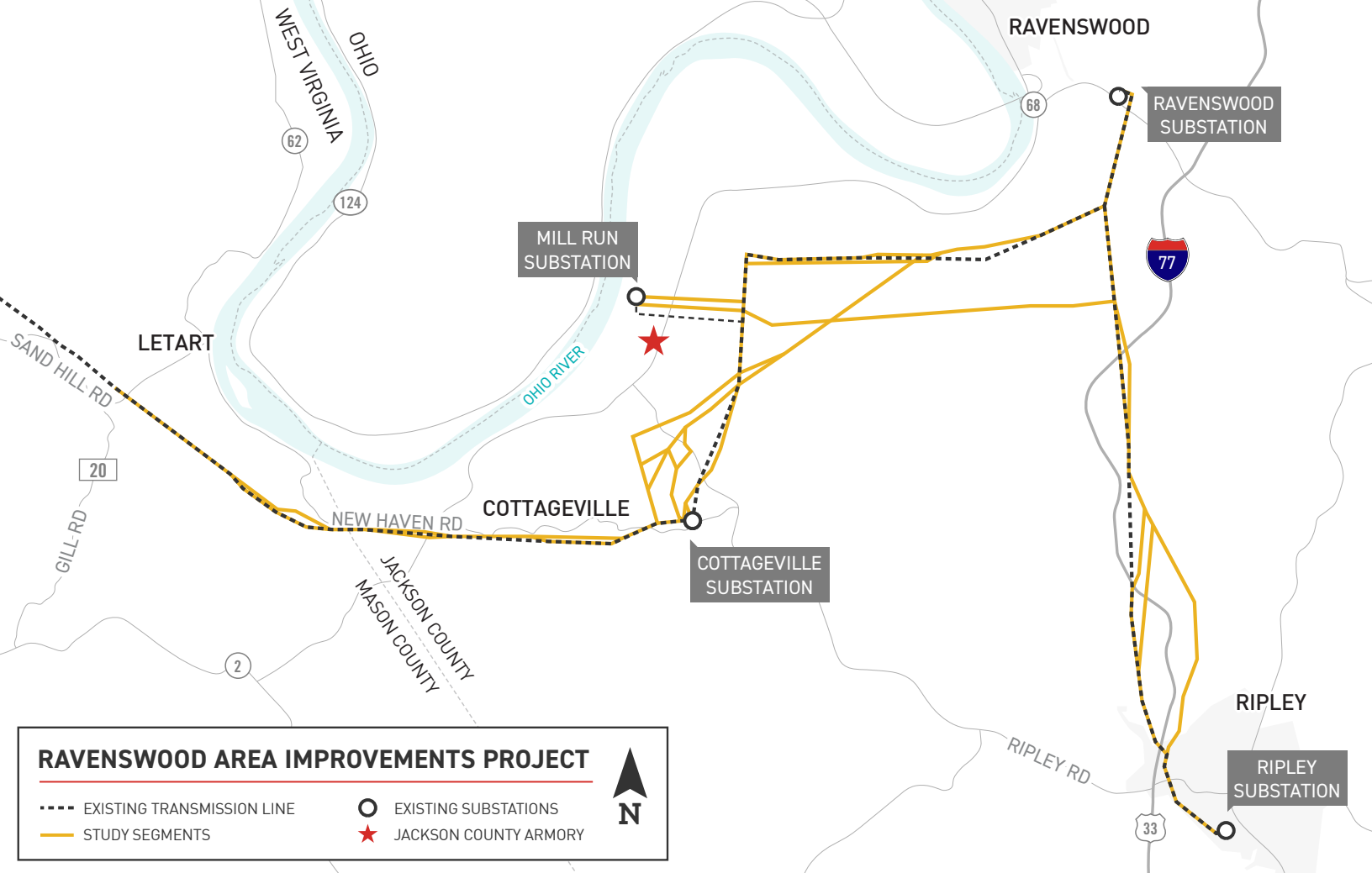
### WHERE

The transmission line rebuild starts in Ripley and travels north for approximately 10 miles towards Ravenswood. Study segments then head west for about 8 miles towards the Jackson County Maritime & Industrial Center. From there, study segments turn south for approximately 3 miles towards Cottageville. The last 7 miles of the rebuild travels west into Mason County to a connection point just west of Sand Hill Road.

### PROJECT SCHEDULE



\*Timeline subject to change.



## TYPICAL STRUCTURES

Appalachian Power will be using galvanized steel H-frame structures for the single circuit sections and monopole structures for the double circuit sections.

Structure Height for Single Circuit: **Approximately 75 feet**

Structure Height for Double Circuit: **Approximately 85 feet**

Right-of-Way Width: **Approximately 100 feet**

\*Exact structure, height, and right-of-way requirements may vary depending on location



**APPALACHIAN POWER VALUES YOUR INPUT ABOUT THIS PROJECT. PLEASE SEND COMMENTS AND QUESTIONS TO:**

### CORTNEY MUSTARD

Project Outreach Specialist

833-313-3743

camustard@aep.com

[www.AppalachianPower.com/Ravenswood](http://www.AppalachianPower.com/Ravenswood)

