

Heartland - Yellowjacket 138 kV Transmission Line Project



AEP Texas North Company and Electric Transmission Texas, LLC plan to address the need for a stronger, more reliable transmission grid in Menard and McCulloch counties by improving local electric infrastructure. These upgrades with improvements will benefit the region by strengthening the transmission system and improving its reliability.



Major components of the Heartland - Yellowjacket Transmission Line Project include:

- Approximately 35 to 44 miles of new 138-kilovolt (kV) transmission line.
- Building a substation - Heartland Substation in Brady.
- Upgrading one existing substation - Yellowjacket substation in Menard



The need for the project was demonstrated in August 2013 when the Brady area experienced a weather-related outage. This project will enhance the local electric grid to quicken restoration time and help provide reliable electric service to the surrounding area. Bolstering the infrastructure serving the Menard and Brady area will also support future economic growth and development.



Crews will begin construction in early 2019. The company expects to complete construction by late 2019.

The proposed transmission line will extend from the new Heartland Substation in Brady southwest to the existing Yellowjacket Substation in Menard.

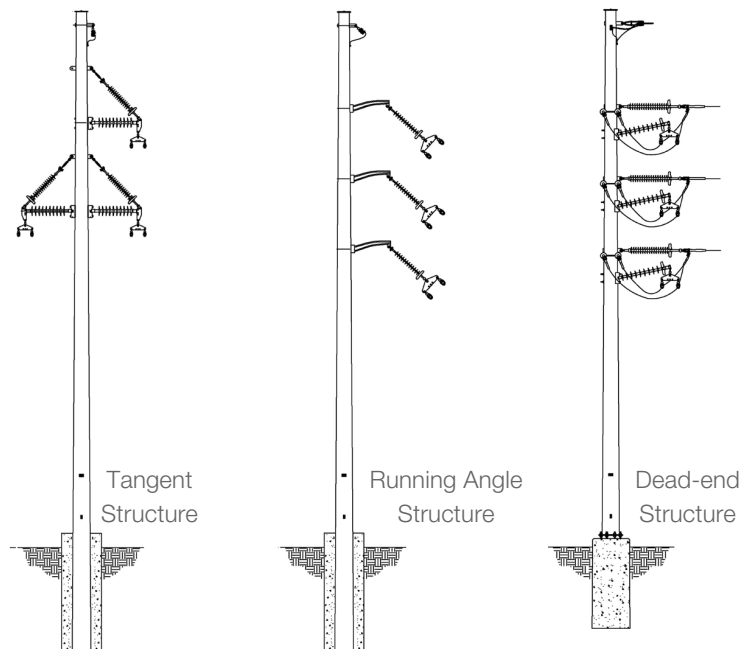
Typical Structure*

Typical Distance Between Structures: 600 feet

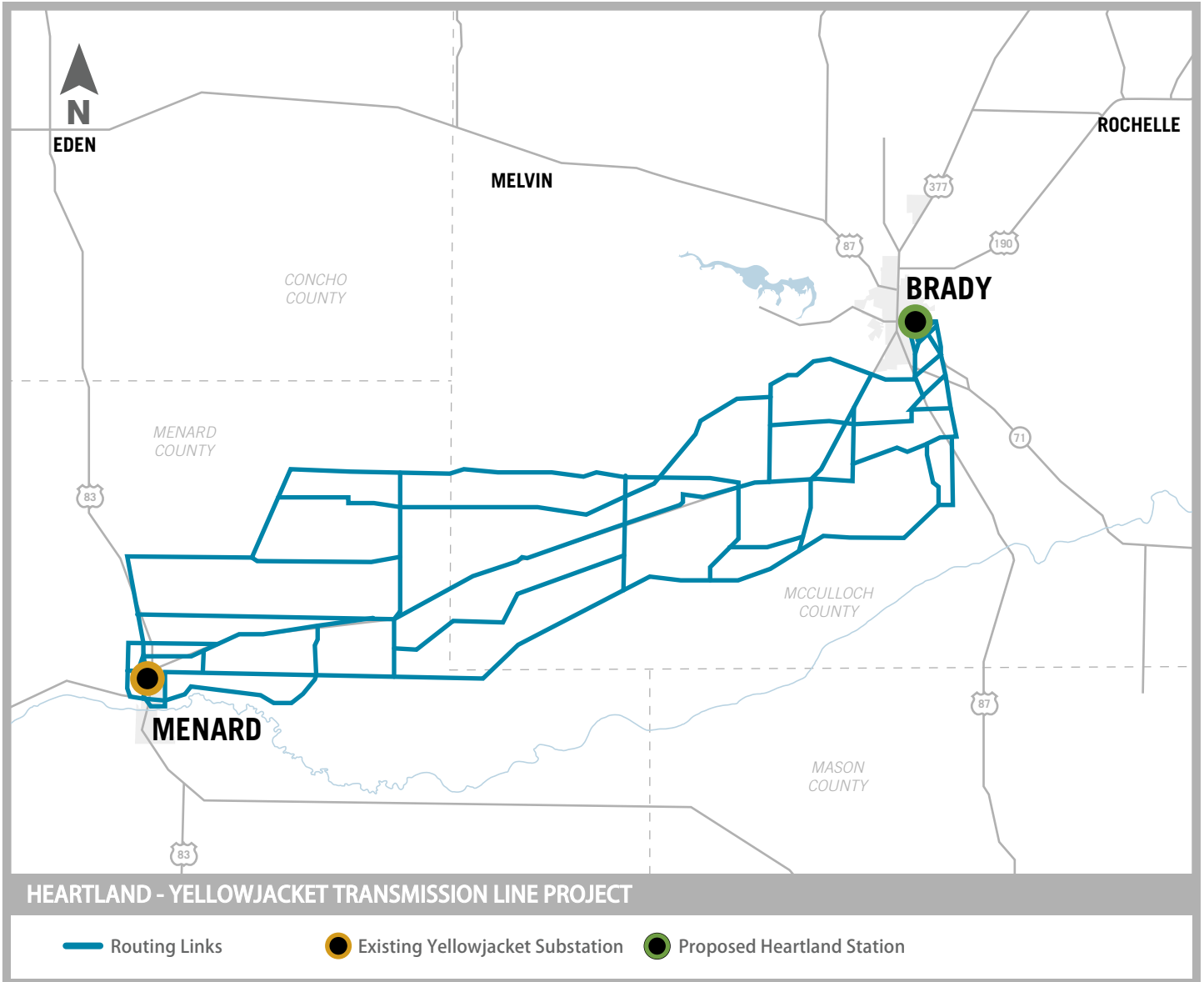
Typical Pole Height: 90-110 feet

Typical Right-of-Way Width: 100 feet

*Exact structure, height and right-of-way may vary



Project Area Map



AEP Texas and ETT welcome your feedback regarding this project.

Contact:



Call Toll Free: 1-844-629-4296



www.aeptransmission.com/texas/Heartland



TEXAS[®]

A unit of American Electric Power

