

# NORTHEAST HOLMES COUNTY IMPROVEMENTS PHASE II

AEP Ohio representatives plan power grid upgrades in Holmes County. The upgrades enhance area electric reliability and support increasing electricity demand. Crews expect to begin construction summer 2025 and conclude in spring 2026.

## WHAT

The project involves:

- Building 4 miles of 69-kilovolt transmission line between the Winesburg Switch, located on Route 160 east of Winesburg, and the Alpine Substation, located off U.S. Highway 62 in Wilmot
- Building Alpine Substation

## WHY

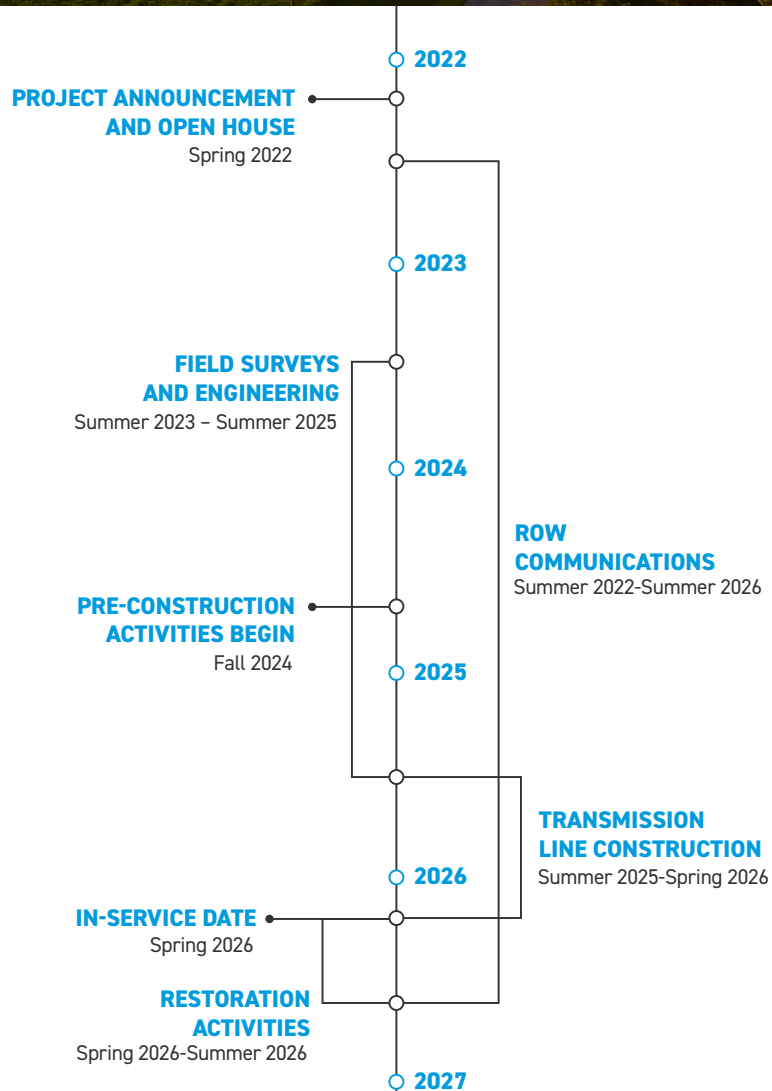
The area currently receives power from a single power line and has experienced several outages in the last five years. Building a new power line creates a second source of electricity and supports increasing electricity demand. In the event a line experiences an outage, the other line can continue to serve customers. A stronger transmission grid benefits the local distribution companies and cooperatives, such as Holmes-Wayne Electric Cooperative, who receive power from the transmission lines.

## WHERE

Project area includes:

- Holmes County
- Stark County
- Tuscarawas County

Company representatives plan to evaluate study segments in the area to identify where the new power line should be located. Study segments are multiple alternatives presented to determine a line route. Company representatives do not build all study segments, rather, they select one route to build based on public feedback and feasibility.



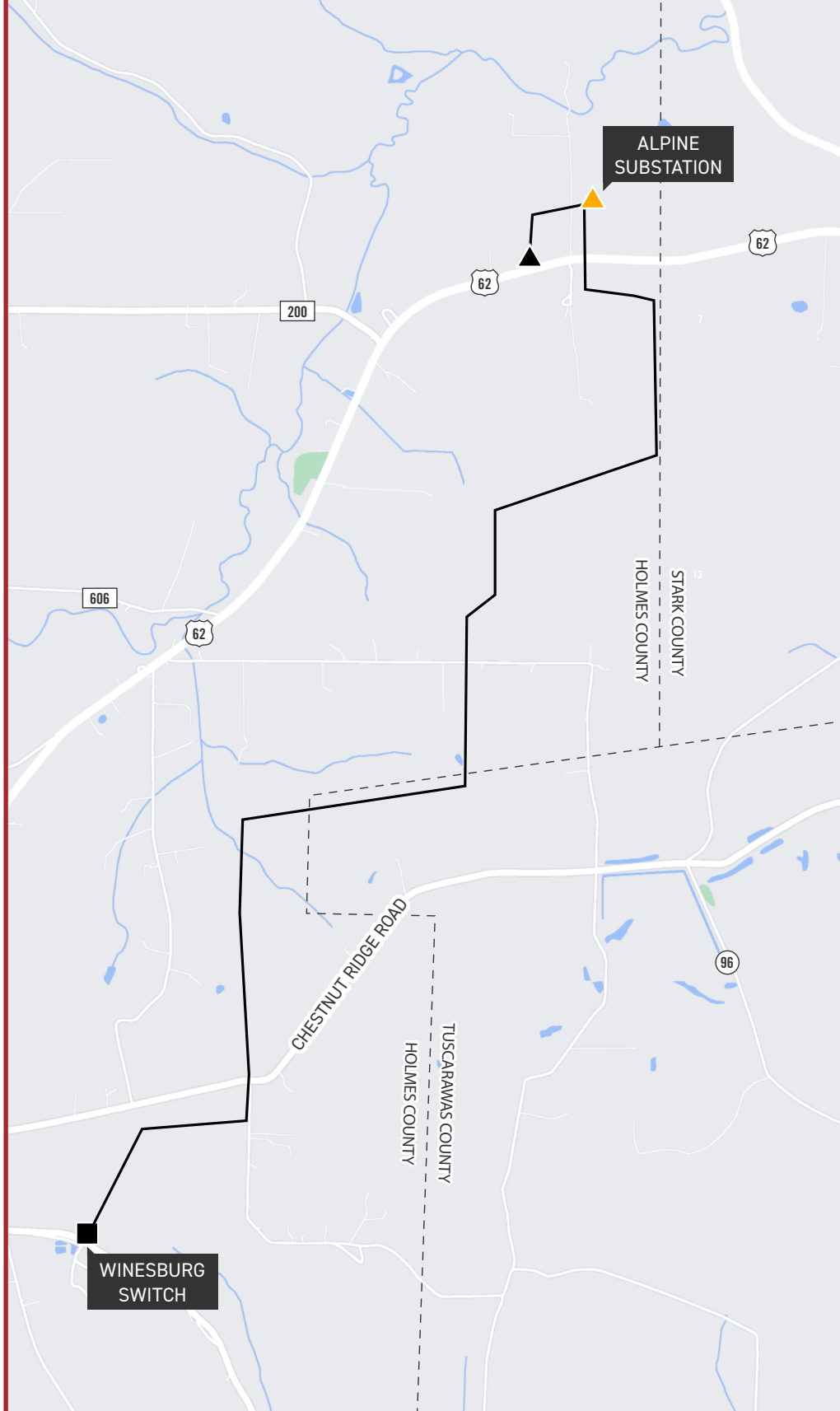
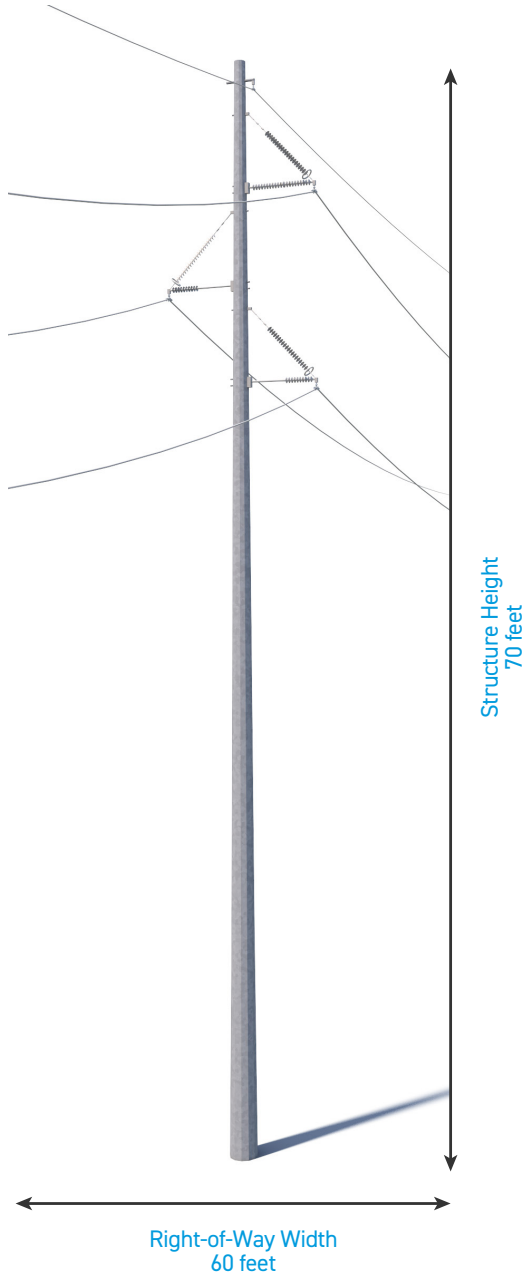
\*Timeline subject to change.

# TYPICAL STRUCTURES

Crews plan to build the line using single steel poles.

Typical Structure Height: 70 feet

Typical Right-of-Way Width: 60 feet



## NORTHEAST HOLMES COUNTY IMPROVEMENTS PHASE II

- TRANSMISSION LINE TO BE BUILT
- EXISTING SWITCH

- ▲ EXISTING SUBSTATION
- ▲ NEW SUBSTATION



\*Exact structure, height, and right-of-way requirements may vary.

**WE VALUE YOUR INPUT. PLEASE SEND COMMENTS AND QUESTIONS TO:**  
 MAGGIE BEGGS · PROJECT OUTREACH SPECIALIST  
 MRBEGGS@AEP.COM · 380-205-5178  
 WWW.AEPOHIO.COM/HOLMES2

