

HERNSHAW

AREA IMPROVEMENTS PROJECT



An AEP Company

BOUNDLESS ENERGY™

Appalachian Power representatives plan to increase electric reliability by making upgrades to the power grid serving customers in Kanawha County, West Virginia. The Hernshaw Area Improvements Project involves building approximately 4 miles of electric transmission line and expanding a substation.

Company representatives expect construction to begin late 2021 and conclude by the end of 2022.



WHAT

The project includes:

- Building approximately 4 miles of electric transmission line to 138-kilovolt standards
- Expanding the Hernshaw Substation
- Retiring two parallel 6-mile transmission lines following construction of the new line

WHY

The project:

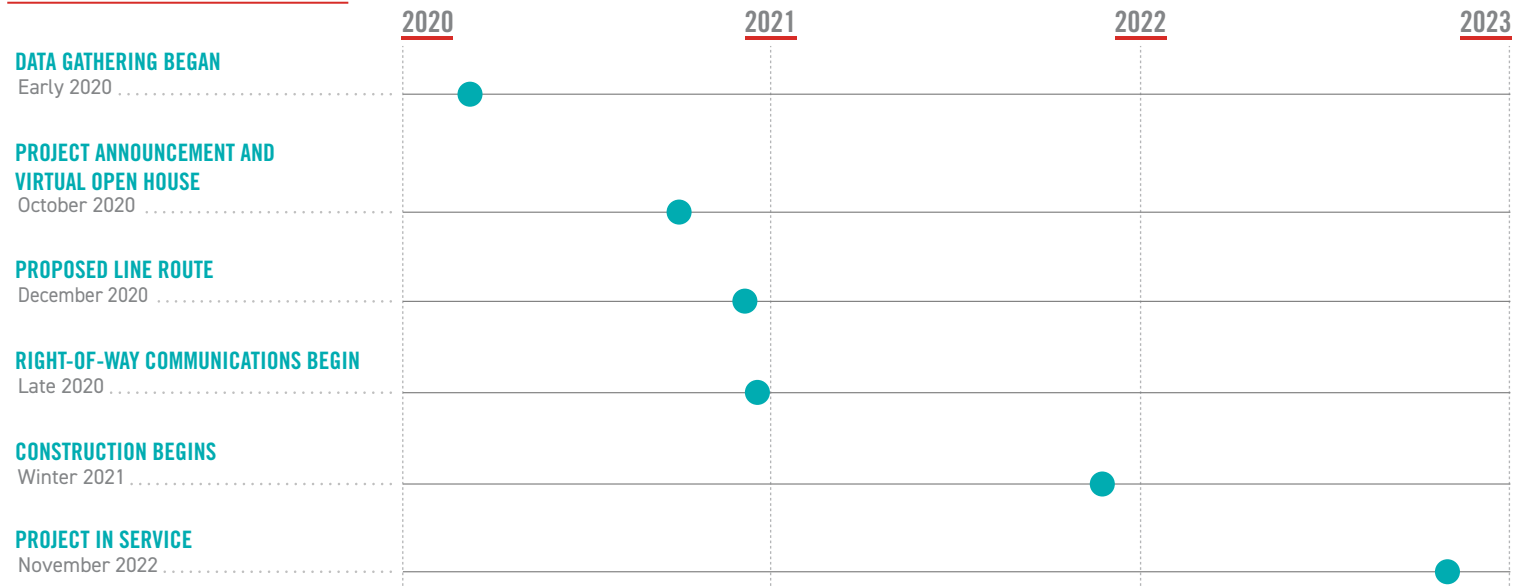
- Retires two parallel transmission lines dating back to the 1930s
- Builds a new transmission line with modern equipment
- Strengthens the local power grid
- Increases electric reliability for customers

WHERE

The upgrades begin at a substation located on Four Mile Hollow Road in Hernshaw and continue east for approximately 4 miles, crossing Lens Creek Road, Left Fork Road and I-64/I-77. The upgrades end at a substation located along the Kanawha River in Marmet.



PROJECT SCHEDULE



*Timeline subject to change.

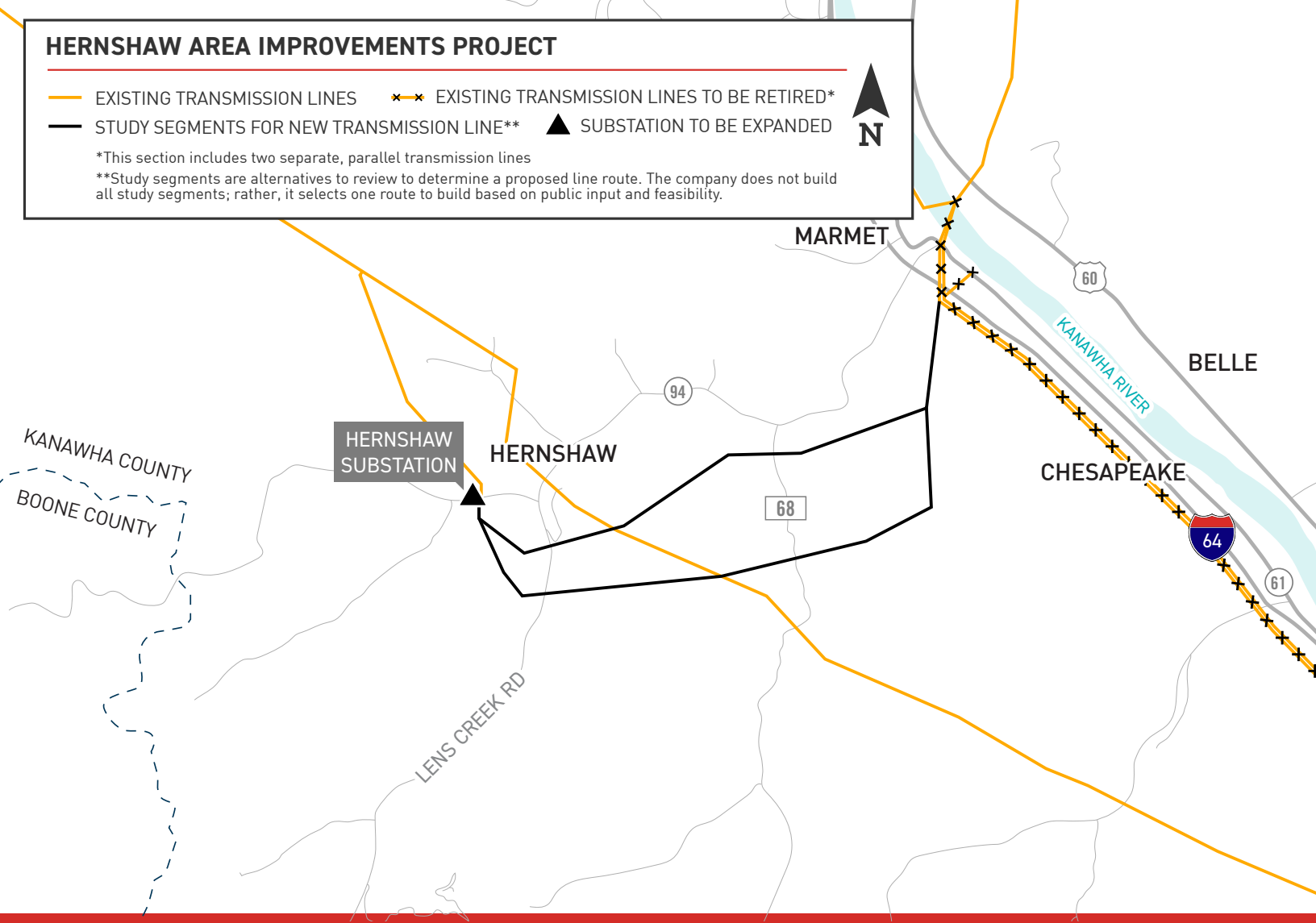
HERNSHAW AREA IMPROVEMENTS PROJECT

- EXISTING TRANSMISSION LINES
- ✕✕ EXISTING TRANSMISSION LINES TO BE RETIRED*
- STUDY SEGMENTS FOR NEW TRANSMISSION LINE**
- ▲ SUBSTATION TO BE EXPANDED



*This section includes two separate, parallel transmission lines

**Study segments are alternatives to review to determine a proposed line route. The company does not build all study segments; rather, it selects one route to build based on public input and feasibility.



TYPICAL STRUCTURES

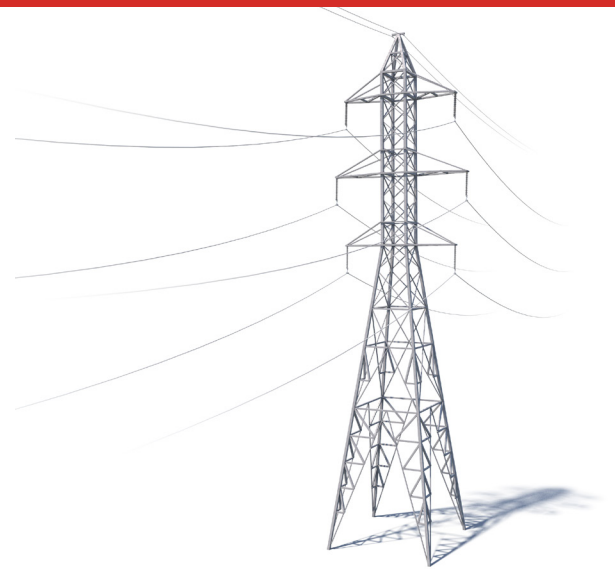
Crews plan to build the power line primarily using steel towers.

At Appalachian Power, we are committed to meeting the energy needs of customers while protecting the environment and natural beauty of the region.

Structure Height: **Approximately 140 feet***

Right-of-Way Width: **Approximately 100 feet***

*Exact structure, height and right-of-way requirements may vary



APPALACHIAN POWER VALUES YOUR INPUT ABOUT THIS PROJECT. PLEASE SEND COMMENTS AND QUESTIONS TO:

CORTNEY MUSTARD

Project Outreach Specialist

833-313-3743

camustard@aep.com

AppalachianPower.com/Hershaw



An AEP Company

BOUNDLESS ENERGY™