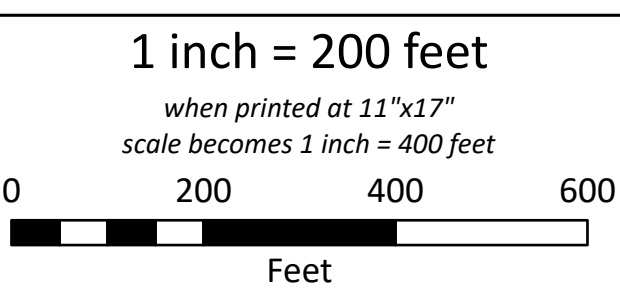


□ Existing AEP Structure	○ Oil & Gas Well	■ Waterbody (NHD)
— Study Segment – Rebuilt in Existing ROW	— Road	■ Wetland (NWI)
— Study Segment – Rebuilt in New ROW	—+— Railroad	■ Contaminated Site
—+— Existing AEP Transmission Line (To Be Removed)	— TMDL-Impaired Stream	■ WV DOH Widening Project
— Existing AEP Transmission Line (69 kV and below)	— Stream (NHD)	■ City of Nitro
— Existing AEP Transmission Line (115-230 kV)	■ 100-Year Floodplain (FEMA)	■ Parcel Boundary
⊕ Cemetery	— Map Tile	



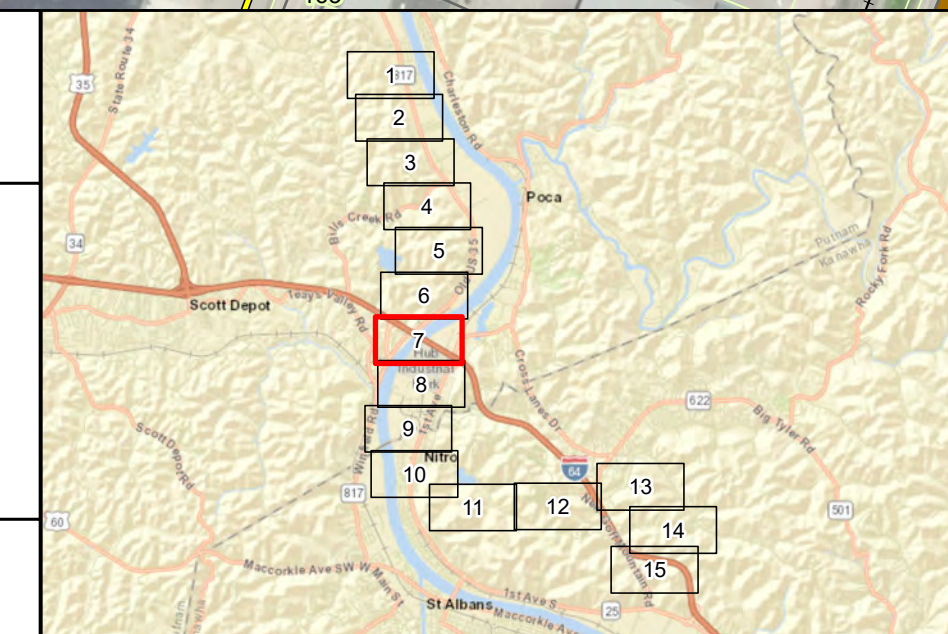
Transmission line routes are preliminary and subject to change



Imagery Source: Esri Aerial Imagery

June 18, 2020

Note: Study segments are alternatives to review to determine a final line route. Only one route between project end points will be built.



## Aerial Map 7 of 15

**Bancroft - Turner  
Transmission Line Rebuild Project**