

FRIES-INDEPENDENCE TRANSMISSION LINE REBUILD PROJECT

Appalachian Power representatives plan upgrades to the electric transmission system in Grayson County. The Fries-Independence Transmission Line Rebuild Project involves rebuilding 11 miles of 69-kilovolt (kV) transmission line, building the proposed Scenic Road Substation and retiring the Fries Substation. The upgrades replace aging equipment and increase electric reliability in the area. Company representatives expect construction to begin in early 2025 and conclude by the end of 2026.

WHAT

Proposed project plans involve:

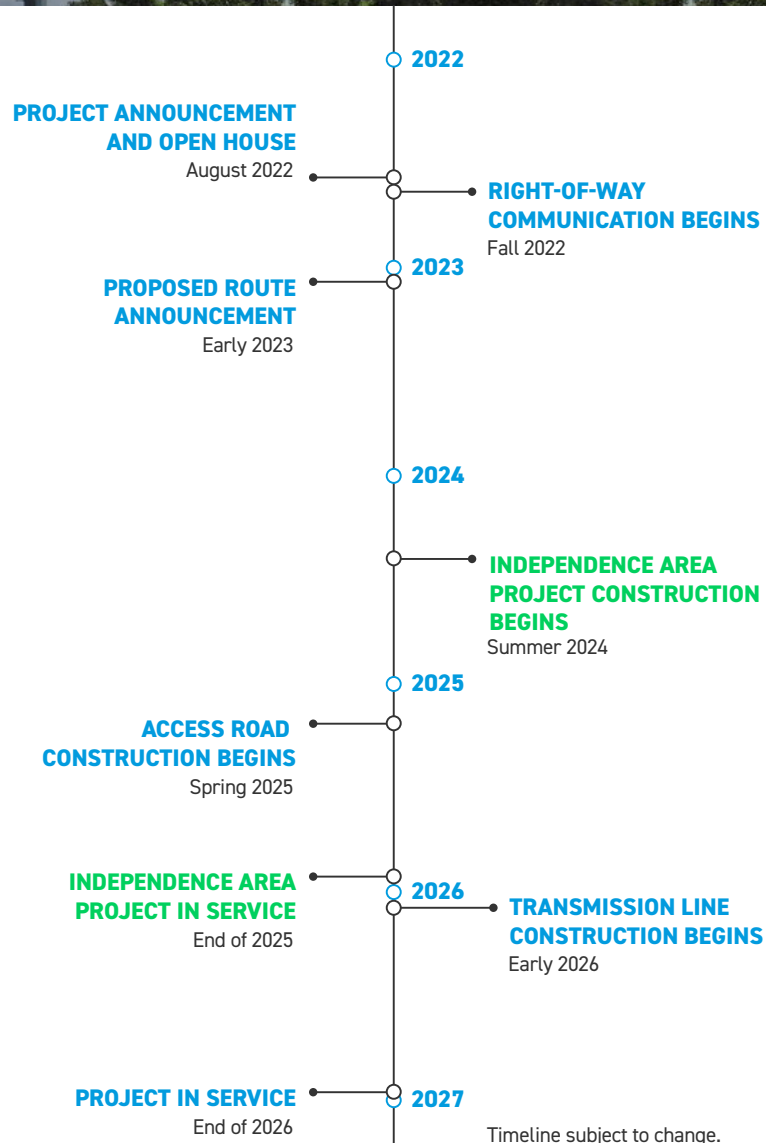
- Rebuilding approximately 11 miles of 69-kilovolt (kV) transmission line
- Building the Scenic Road Substation in Fries
- Retiring the existing Fries Substation
- Building the Point Lookout Substation as part of the previously announced Independence Area Project

WHY

This project, along with the Independence Area Project, supports enhanced electric reliability for customers in Grayson County. The Independence Area Project involves building the Point Lookout Substation and a new electric transmission line. Installing a second power source allows crews to address aging equipment along the existing Fries – Independence transmission line, replacing wooden structures from the 1950s with modern steel poles. Together, these improvements reduce extended, community-wide outages and strengthen the power grid in the Elk Creek, Independence, Grant and Troutdale communities.

WHERE

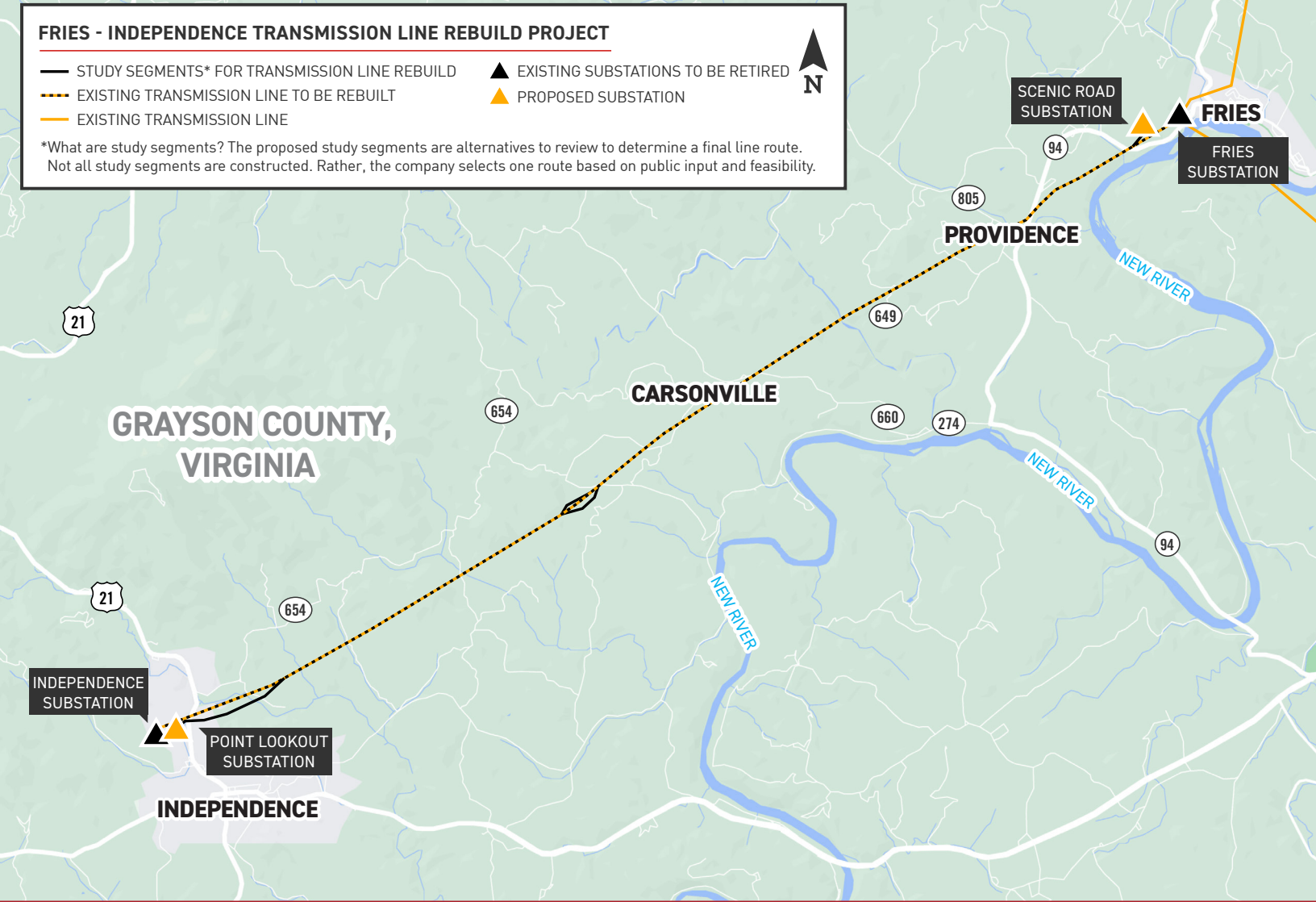
The rebuild begins at the proposed Point Lookout Substation along Austin Street, off North Independence Avenue/Route 21. The upgrades travel northeast, crossing through Carsonville and Providence before ending at the proposed Scenic Road Substation to be located off Scenic Road in Fries.



FRIES - INDEPENDENCE TRANSMISSION LINE REBUILD PROJECT

- STUDY SEGMENTS* FOR TRANSMISSION LINE REBUILD
- EXISTING TRANSMISSION LINE TO BE REBUILT
- EXISTING TRANSMISSION LINE
- ▲ EXISTING SUBSTATIONS TO BE RETIRED
- ▲ PROPOSED SUBSTATION

*What are study segments? The proposed study segments are alternatives to review to determine a final line route. Not all study segments are constructed. Rather, the company selects one route based on public input and feasibility.

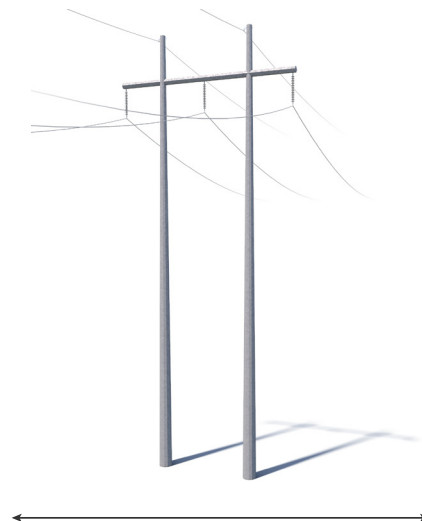


TYPICAL STRUCTURES

Crews plan to rebuild the line using mainly steel H-frames or three-pole structures depending on final engineering.

Typical Structure Height: [Approximately 85 feet*](#)

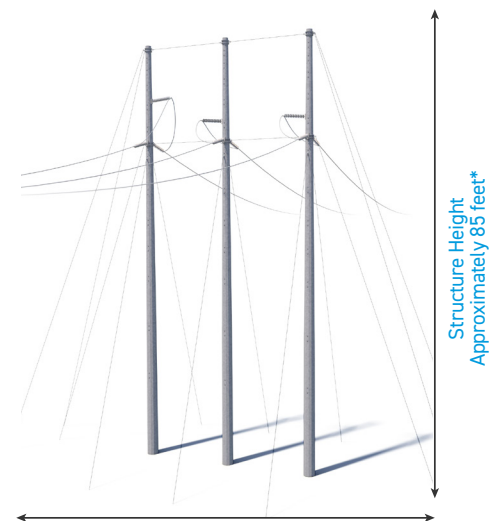
Typical Right-of-Way Width: [Approximately 100 feet*](#)



Right-of-Way Width
Approximately 100 feet*

PRIMARY STRUCTURE TO BE USED

H-FRAME



Right-of-Way Width
Approximately 100 feet*

THREE-POLE STRUCTURE

*Exact structure, height and right-of-way requirements may vary.

WE VALUE YOUR INPUT. PLEASE SEND COMMENTS AND QUESTIONS TO:

CORTNEY MUSTARD · PROJECT OUTREACH SPECIALIST SR.

CAMUSTARD@AEP.COM · 833-313-3743

APPALACHIANPOWER.COM/FRIES-INDEPENDENCE

