

GRAPE CREEK-STERLING CITY

TRANSMISSION IMPROVEMENTS PROJECT



An AEP Company

BOUNDLESS ENERGY™

AEP Texas representatives plan to upgrade the power grid between Grape Creek and Sterling City. The project involves rebuilding about 32 miles of 69-kilovolt power line and upgrading area substations to increase electric reliability for customers.



WHAT

The project involves:

- Rebuilding about 32 miles of 69-kilovolt transmission line
- Installing new wires along the 32-mile power line route
- Upgrading area substation equipment

WHY

Project benefits:

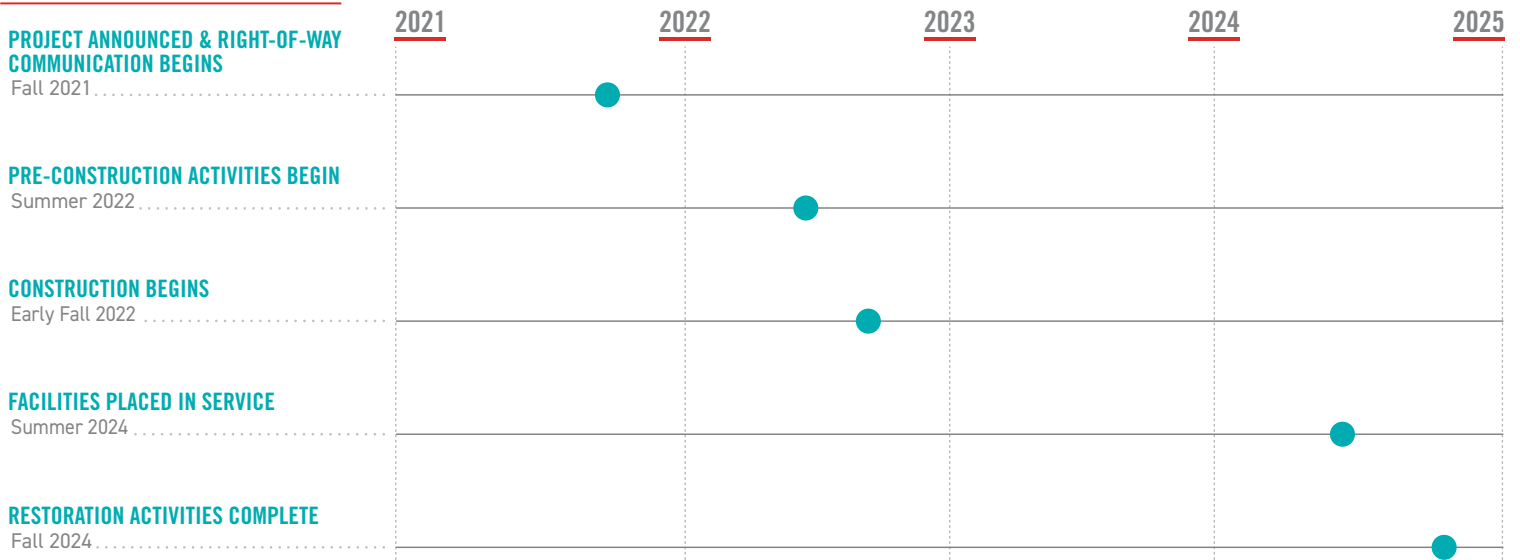
- Increases electric capacity to ensure continued reliability for customers
- Replaces century-old, deteriorating wooden poles with modern equipment to reduce maintenance frequency and strengthen the line against storm impacts
- Upgrades substation equipment to decrease the likelihood of larger, sustained community power outages

WHERE

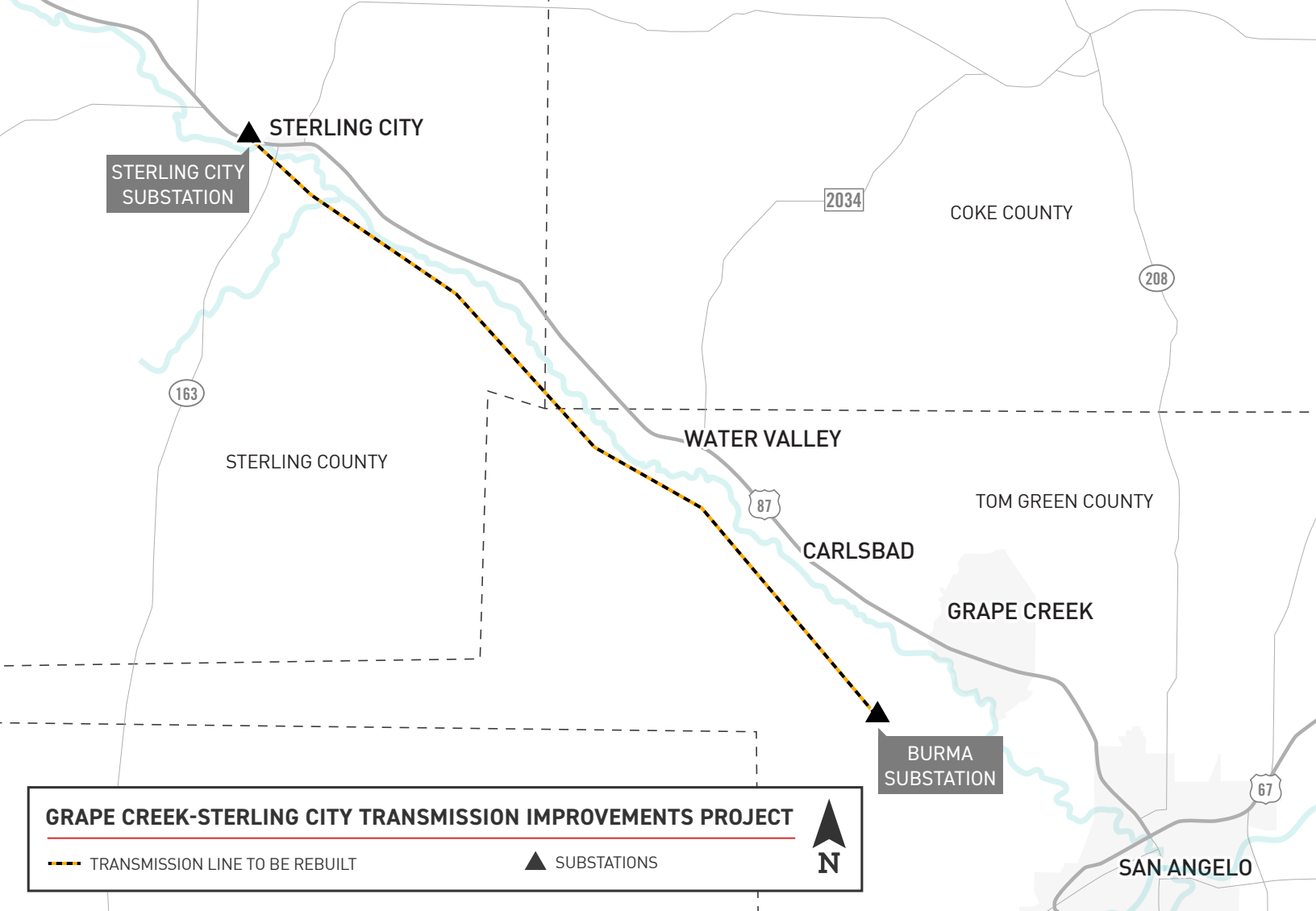
The transmission line travels between the Burma Substation, located about 6 miles southwest of Grape Creek, and the Sterling City Substation, located north of U.S. Highway 87 in far west Sterling City



PROJECT SCHEDULE



**Timeline subject to change.



TYPICAL STRUCTURES

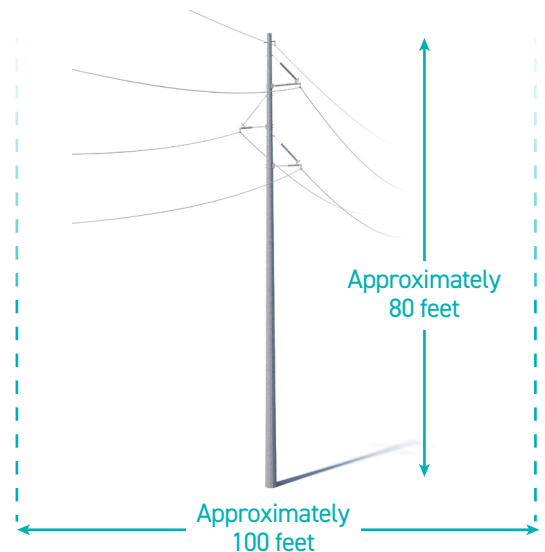
The project involves the use of single steel poles.

Typical Structure Height: **Approximately 80 feet***

Typical Distance Between Structures: **Approximately 700 feet***

Typical Right-of-Way Width: **Approximately 100 feet***

*Exact structure, height and right-of-way requirements may vary



AEP TEXAS VALUES YOUR INPUT ABOUT THIS PROJECT. PLEASE SEND COMMENTS AND QUESTIONS TO:

MATTHEW HAMES

Project Outreach Specialist

(918) 879-0453

mchames@aep.com

AEPTexas.com/GrapeCreek-SterlingCity



BOUNDLESS ENERGY™