

TUTTLE AREA POWER IMPROVEMENTS PROJECT

Public Service Company of Oklahoma (PSO) representatives plan power grid upgrades to improve electric reliability for customers in Grady County. The Tuttle Area Power Improvements Project involves building approximately 14 miles of power line and a substation to improve reliability and customer quality of service.

WHAT

This project includes:

- Building approximately 5 miles of 138-kilovolt (kV) transmission line
- Building approximately 8.5 miles of 13-kV distribution line
- Building the new Ridge Road Substation

The project involves the construction of transmission and distribution lines. Transmission lines carry power across longer distances and at greater capacity, while distribution lines operate at lower capacities and feed homes and businesses.

WHY

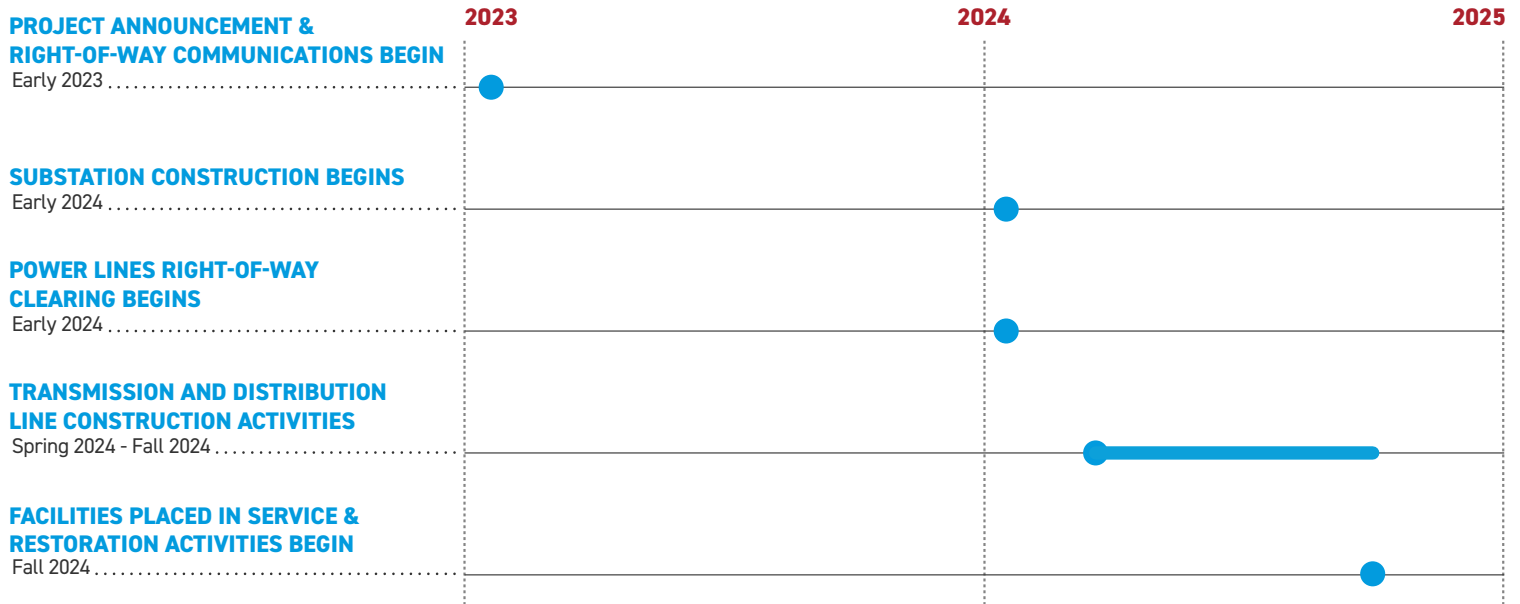
The project:

- Increases service reliability for customers by adding capacity to the local power grid and decreases the likelihood of large, community-wide power outages
- Provides another power provider to meet the needs of the growing community

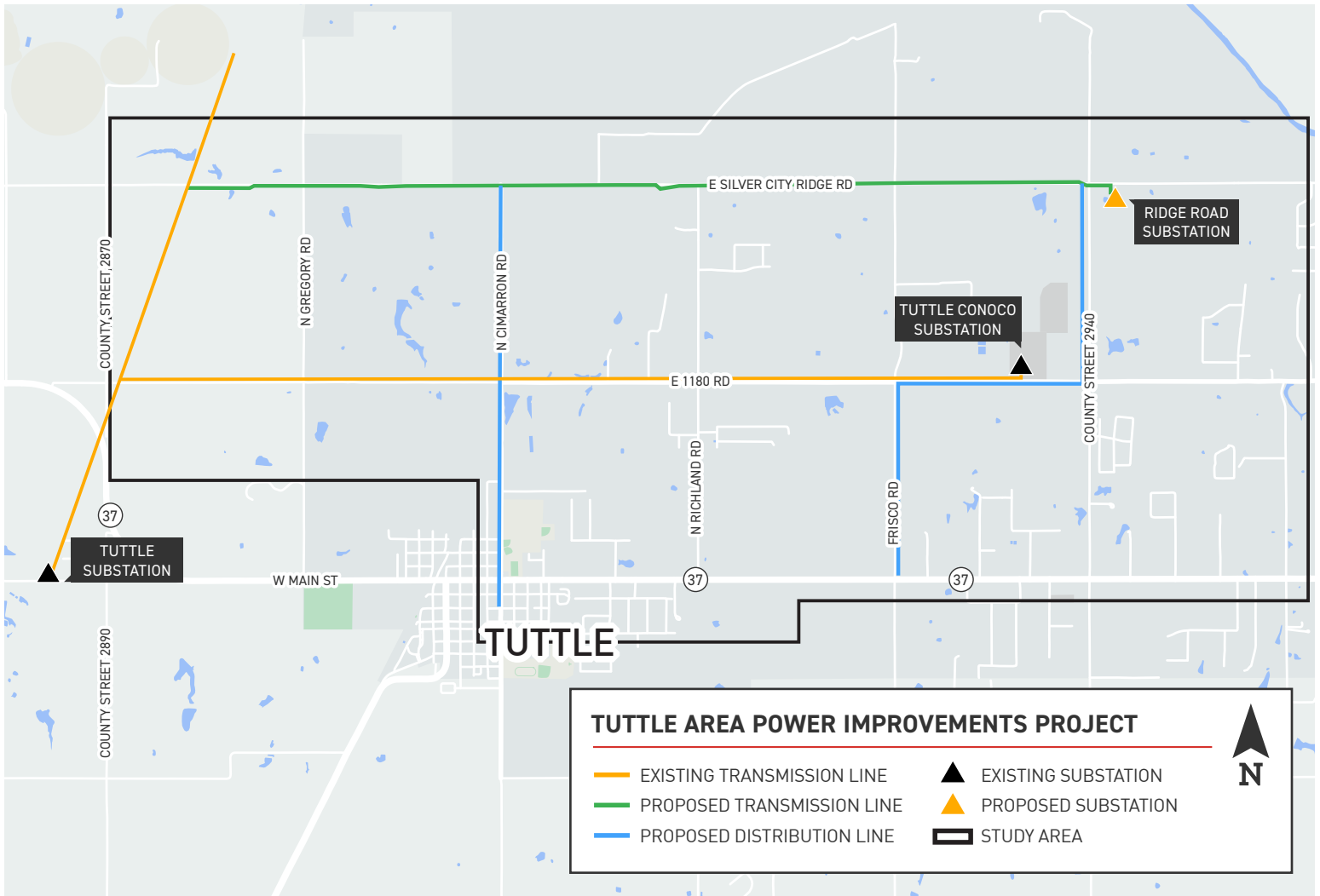
WHERE

- The planned transmission line connects the existing transmission line to the Ridge Road Substation
- The planned distribution lines branch off from the new transmission line to feed customers in the Tuttle area
- See reverse side of the fact sheet for a more detailed map

PROJECT SCHEDULE



*Timeline subject to change.



TYPICAL STRUCTURES

PSO representatives plan to install steel single poles for the transmission line and wooden single poles for the distribution line on this project.

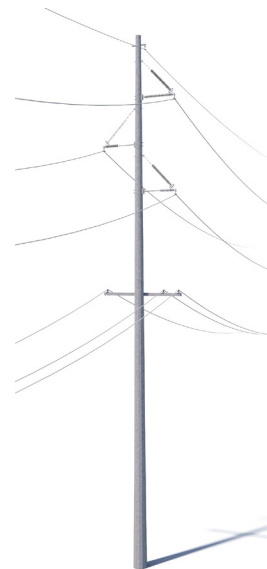
Transmission Structures

- Proposed Typical Height: **Approximately 95 feet***
- Proposed Typical Distance Between Structures: **Approximately 600 feet***
- Proposed Typical Right-of-Way Width: **100 feet**

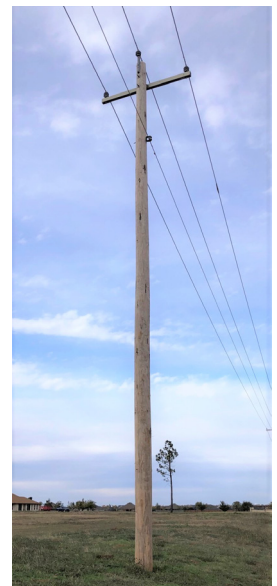
Distribution Structures

- Proposed Typical Structure Height: **Approximately 45 feet***
- Proposed Typical Distance Between Structures: **Approximately 250 feet***
- Proposed Typical Right-of-Way Width: **20 feet**

*Exact structure design, height and right-of-way requirements may vary.



Proposed Transmission Structure



Proposed Distribution Structure

WE VALUE YOUR INPUT. PLEASE SEND COMMENTS AND QUESTIONS TO:

MATTHEW HAMES · PROJECT OUTREACH SPECIALIST
 MCHAMES@AEP.COM · 918-237-6736
 PSOKLAHOMA.COM/TUTTLEAREA



04/28/2023