

# SOUTH CHICKASHA

## TRANSMISSION IMPROVEMENTS PROJECT

**PUBLIC SERVICE  
COMPANY OF  
OKLAHOMA**

An **AEP** Company  
BOUNDLESS ENERGY™

The South Chickasha Transmission Improvements Project involves rebuilding about 5 miles of 138-kilovolt (kV) power line in Grady County to improve electric reliability for area customers. Crews plan to begin construction in early 2024 and conclude in spring 2024.

### WHAT

The project involves:

- Rebuilding about 5 miles of 138-kV power line between the Cornville and Norge Road substations in the Chickasha area
- Upgrading area substation equipment

### WHY

Project benefits:

- Replaces wooden poles from the 1960s with modern steel poles to reduce maintenance frequency and strengthen the line against severe weather impacts
- Upgrades wires to accommodate increasing load demands
- Upgrades wires and substation equipment to decrease the likelihood of larger, community-wide power outages

### WHERE

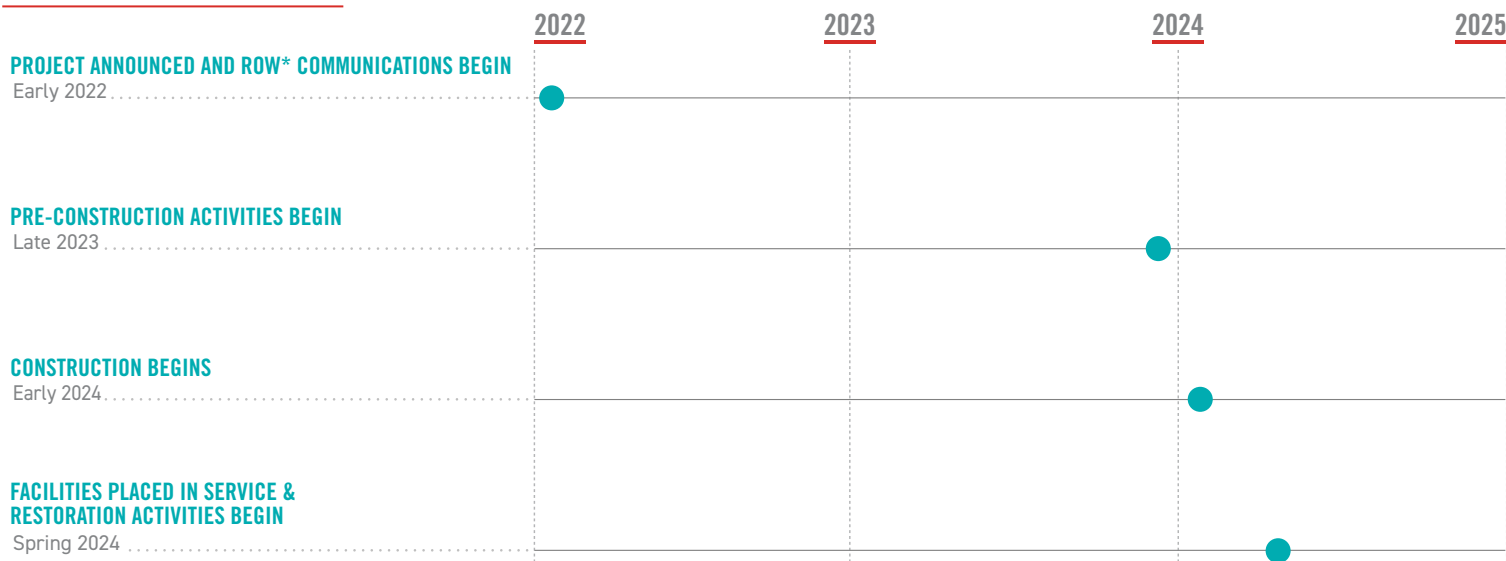
- The Cornville Substation is about 3 miles southeast of Chickasha off North 2862 Road
- The Norge Road Substation is in southwest Chickasha near West Country Club Road and Norge Road

The project area includes:

- City of Chickasha
- Grady County

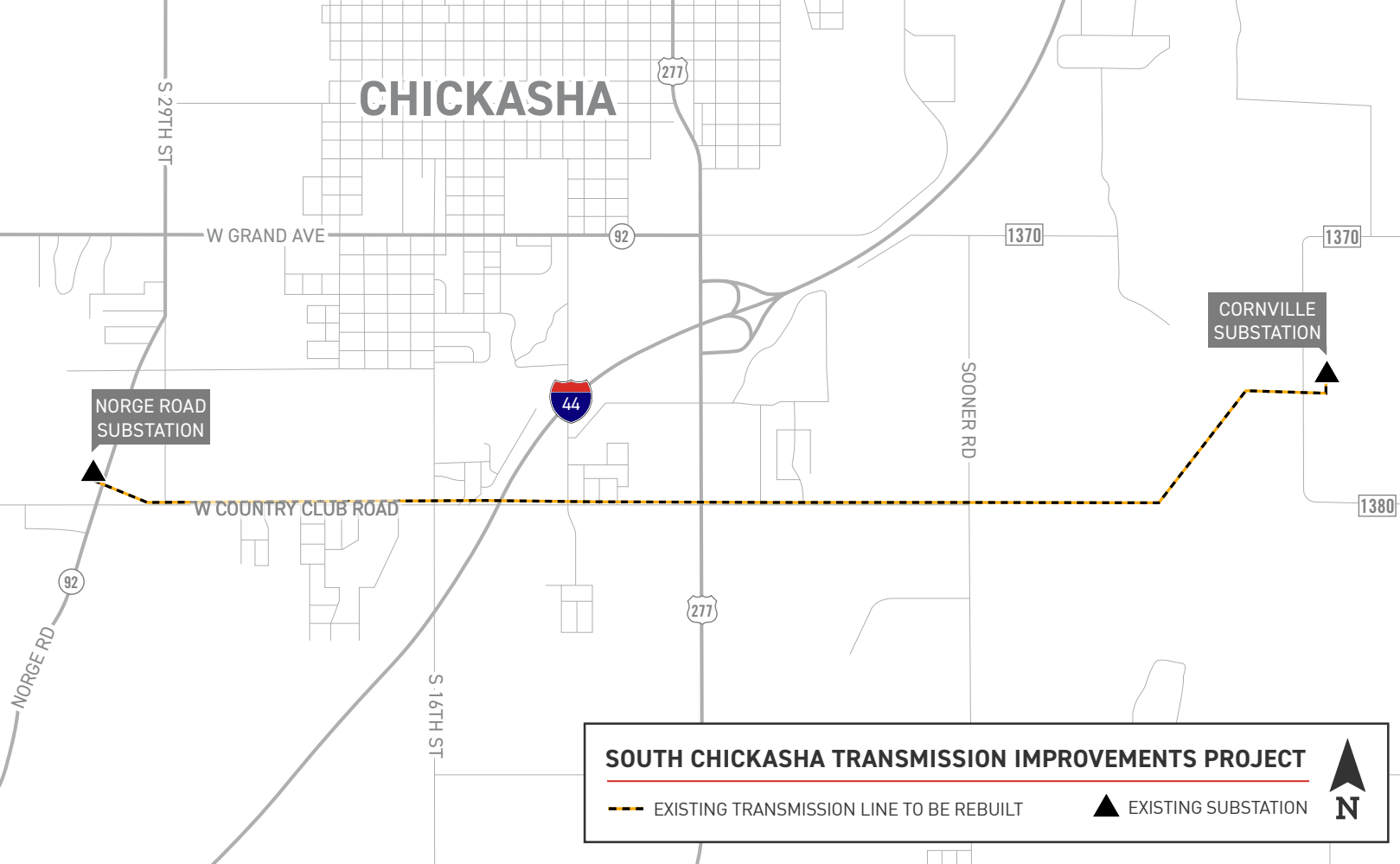


### PROJECT SCHEDULE



\*ROW: Right-of-Way

\*\* Timeline subject to change



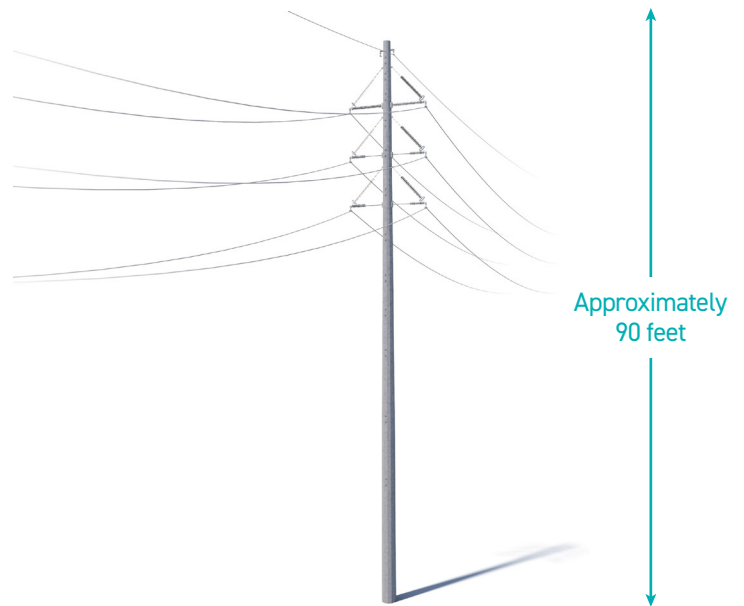
## TYPICAL STRUCTURES

Typical Structure Height:

\*Approximately 90 feet

Typical Distance between Structures:

\*Approximately 600 feet



\*Exact structure type and height requirements may vary

PSO VALUES YOUR INPUT ABOUT THIS PROJECT. PLEASE SEND COMMENTS AND QUESTIONS TO:

### MATTHEW HAMES

Project Outreach Specialist

(918) 237-6736

mchames@aep.com

[PSOklahoma.com/SouthChickasha](https://PSOklahoma.com/SouthChickasha)



An AEP Company

BOUNDLESS ENERGY™