

RIVERSIDE-SOUTH HUDSON TRANSMISSION IMPROVEMENTS PROJECT

Public Service Company of Oklahoma (PSO) representatives plan to rebuild about 10 miles of 138-kilovolt (kV) transmission line in the south Tulsa and Jenks area. This project strengthens the local electric system and provides more reliable service in those communities. Crews plan to start construction in early 2025 and conclude in late spring 2026.

WHAT

The project involves:

- Rebuilding about 10 miles of 138-kilovolt (kV) transmission line between the South Hudson Substation in Tulsa and the Riverside Substation in Jenks. This includes rebuilding about 7.5 miles of the 138-kV Riverside - South Hudson transmission line and about 2.5 miles of lines connecting other south Tulsa substations to the Riverside - South Hudson transmission line.
- Upgrading substation equipment
- Trimming or removing trees and woody-stemmed vegetation that have grown within PSO's right-of-way

WHY

Project benefits:

- Replaces aging wooden poles from 1950 with steel poles to strengthen the line against severe weather impacts
- Upgrades substation and transmission line equipment to reduce maintenance frequency and decrease the likelihood of large, community-wide power outages
- Enhances the local grid to better accommodate electrical load demand

WHERE

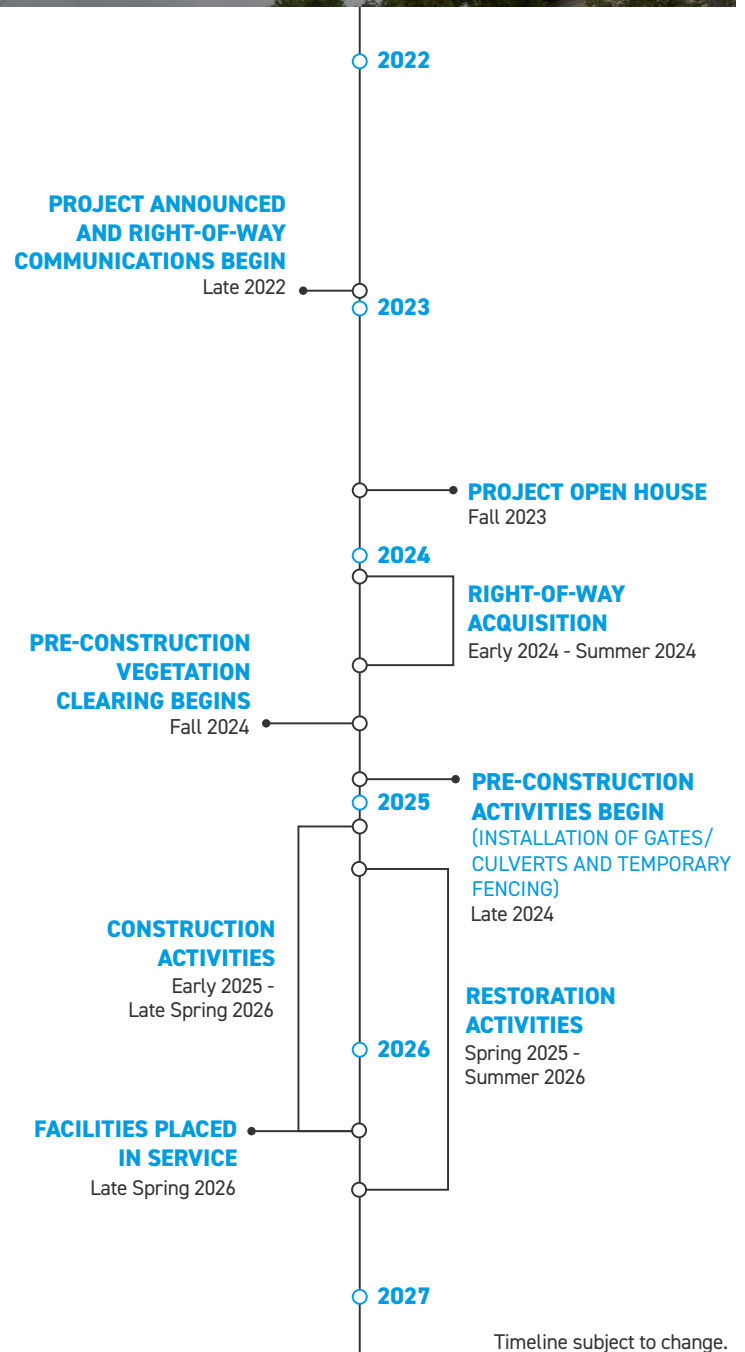
- The South Hudson Substation is in Tulsa northeast of LaFortune Park off East 51st Street South
- The Riverside Substation is in Jenks near PSO's Riverside Power Station off East 116th Street

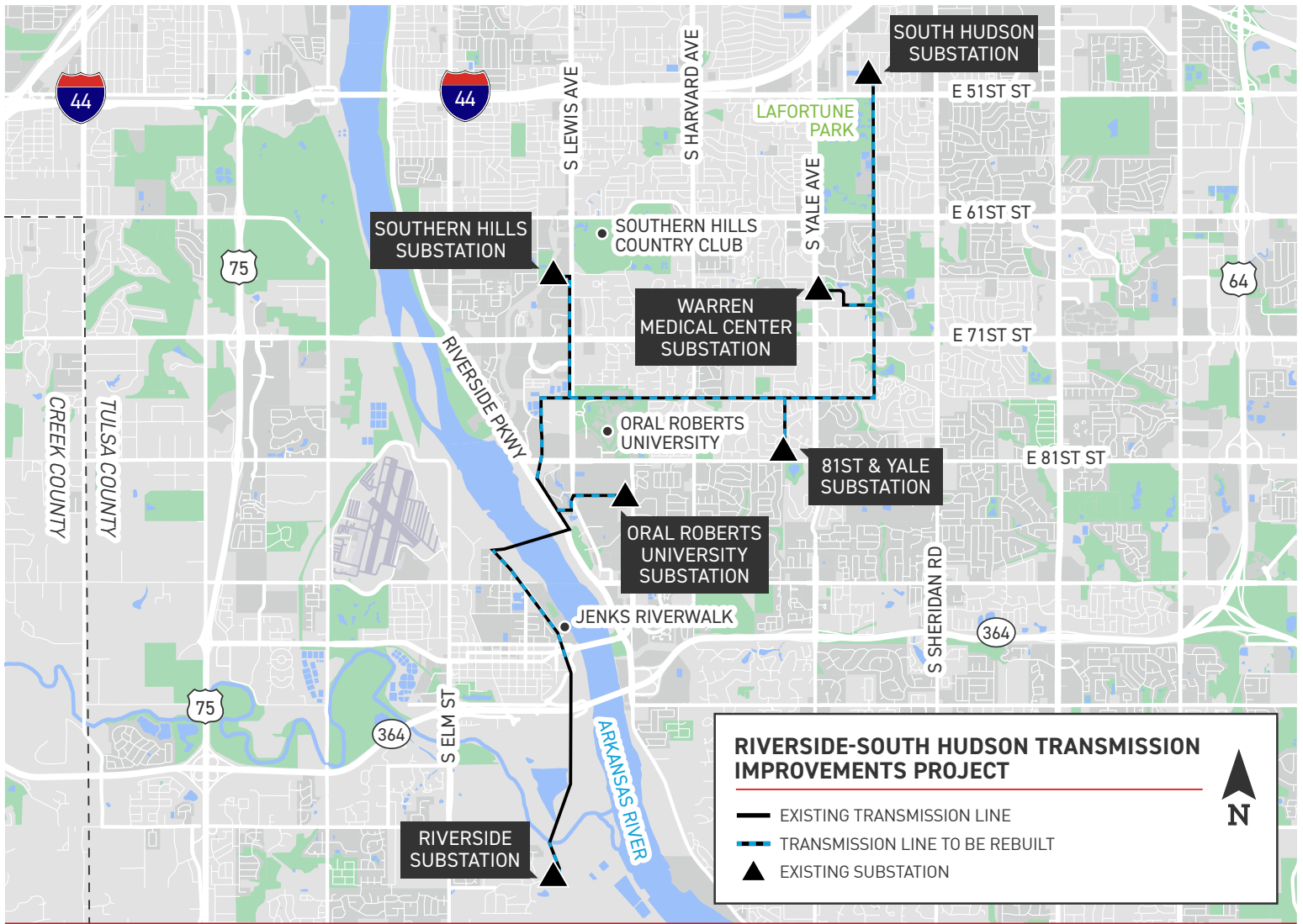
BEFORE CONSTRUCTION

A right-of-way agent may contact you if PSO needs to acquire new or update existing easements on your property. You will also be contacted should crews need to access your property for survey work or construction.

To safely perform their work, crews may need to:

- Remove woody-stemmed vegetation from the right-of-way
- Install temporary gates, fencing and access roads
- Install culverts for water management





Current Structure



Current Structure

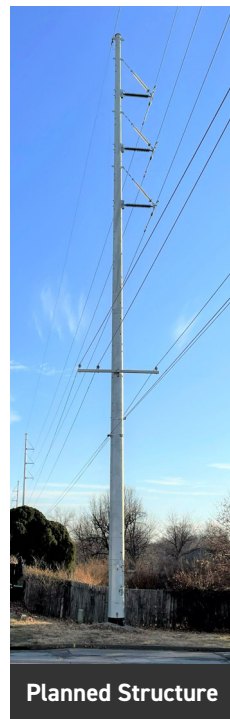
TYPICAL STRUCTURES (CURRENT VS. PLANNED)

PSO crews plan to install steel single poles on this project.

Current:
 Typical Structure Height: **Approximately 60-70 feet***
 Structure Material: **Wood**

Planned:
 Typical Structure Height: **Approximately 95 feet***
 Typical Distance Between Structures: **Approximately 300 feet***
 Structure Material: **Steel**

*Exact structure design, height and right-of-way requirements may vary.



Planned Structure



Planned Structure

WE VALUE YOUR INPUT. PLEASE SEND COMMENTS AND QUESTIONS TO:

MATTHEW HAMES · PROJECT OUTREACH SPECIALIST
 MCHAMES@AEP.COM · 918-237-6736
 PSOKLAHOMA.COM/RIVERSIDE-SOUTH HUDSON



An AEP Company

09/29/2023