

ATHENS AREA IMPROVEMENTS PROJECT

AEP Ohio representatives plan power grid upgrades in Athens County. The upgrades address the growing power demand in the area and reduce larger, sustained community outages. Crews expect to begin construction fall 2027 and conclude by 2029.

WHAT

The project involves:

- Building 4-6* miles of 138-kilovolt power line.
- Rebuilding 5-8* miles of power line.
- Retiring 6-12* miles of transmission facilities.
- Upgrading Lee Substation located off Virginia Street in Albany and Elliott Substation located off Blackburn Road in Athens.

* Mileage depends on proposed final line route determination.

The project requires Ohio Power Siting Board (OPSB) approval.

WHY

The improvements:

- Enhance electric reliability for customers by providing an additional power source to serve the area in the event of an outage on an existing transmission line.
- Ensure the area's growing power demand does not exceed the line's operational capacity in the event of future power outages or power line maintenance.
- Upgrade and retire deteriorating equipment to reduce the likelihood of larger, sustained community power outages.

WHERE

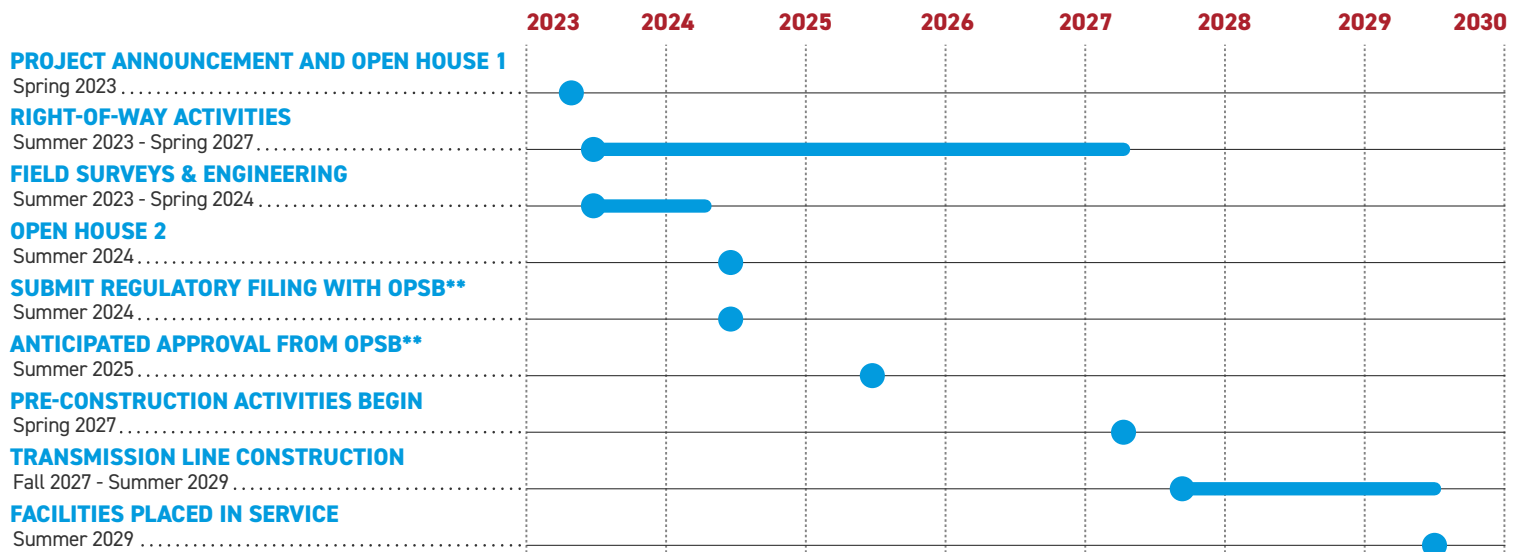
The project area involves:

- Athens County
- Alexander Township
- Athens Township
- Lee Township
- City of Athens
- Village of Albany

Company representatives plan to evaluate possible route options* to build a power line and rebuild existing power lines to help determine the location of the improvements.

*Route options are multiple alternatives presented to determine a line route. Company representatives do not build all route options but rather they select one route to build based on public feedback and feasibility.

PROJECT SCHEDULE



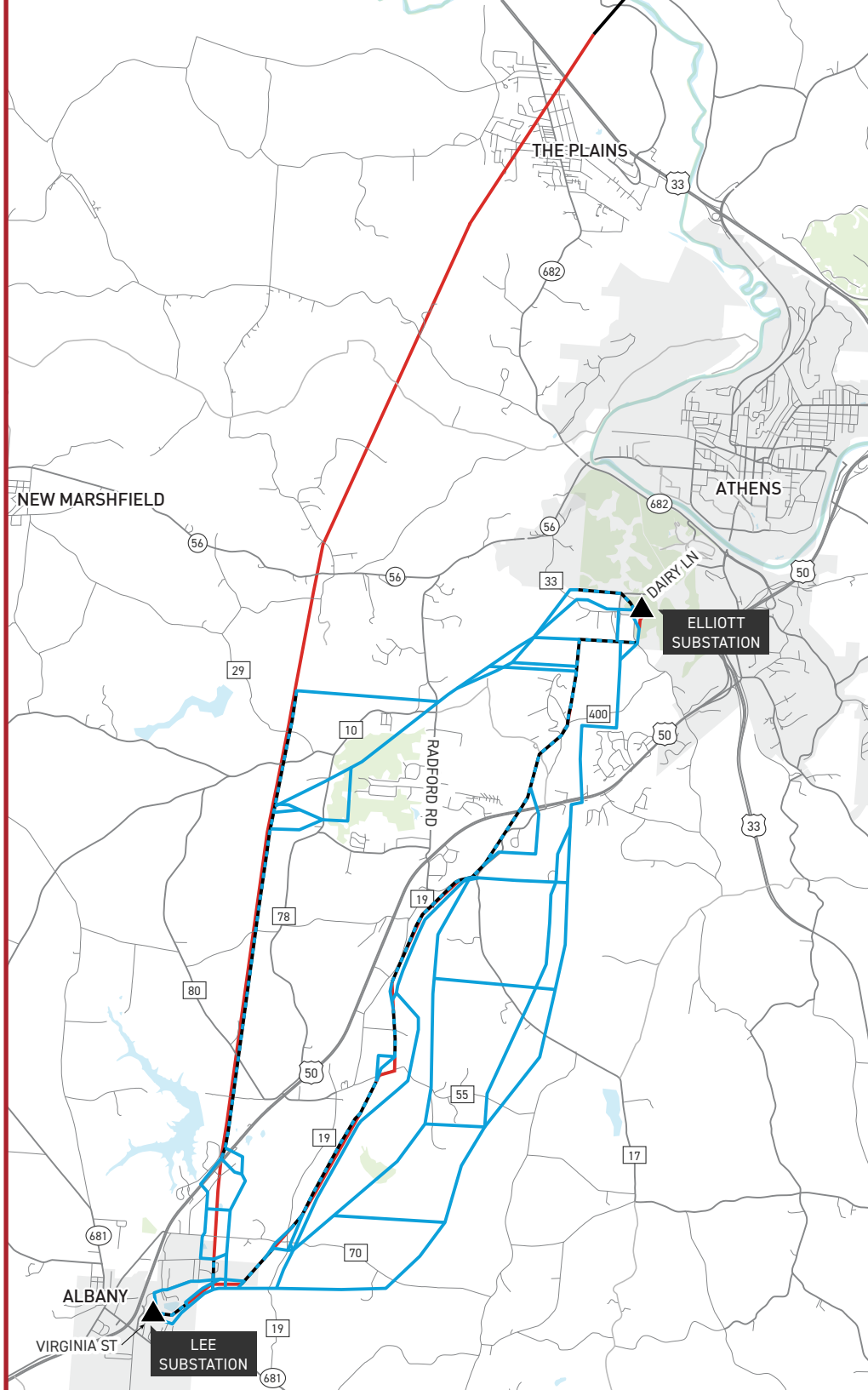
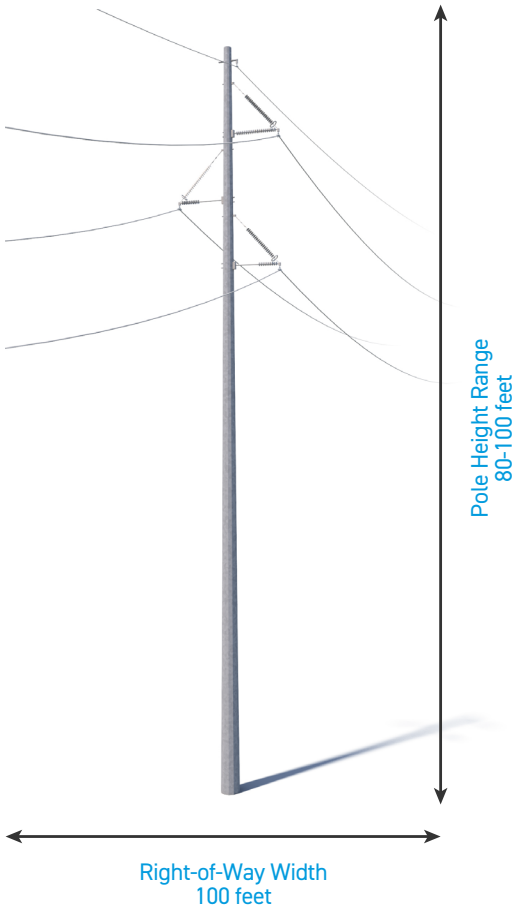
*Timeline subject to change
**Ohio Power Siting Board

TYPICAL STRUCTURES

The project involves the use of single steel poles.

Pole Height Range: 80-100 feet

Right-of-Way Width: 100 feet



ATHENS AREA IMPROVEMENTS PROJECT

- EXISTING TRANSMISSION LINE
- ROUTE OPTION* FOR TRANSMISSION LINE TO BE BUILT
- EXISTING SUBSTATION
- ROUTE OPTION* FOR TRANSMISSION LINE TO BE REBUILT
- TRANSMISSION FACILITIES TO BE RETIRED



*Exact structure, height, and right-of-way requirements may vary.

*Route options are multiple alternatives presented to determine a line route. Company representatives do not build all route options but rather they select one route to build based on public feedback and feasibility.

WE VALUE YOUR INPUT. PLEASE SEND COMMENTS AND QUESTIONS TO:

KELLY FOLEY KRUSE · PROJECT OUTREACH SPECIALIST

KMFOLEYKRUSE@AEP.COM · 380-205-5314

AEP.OHIO.COM/ATHENS

